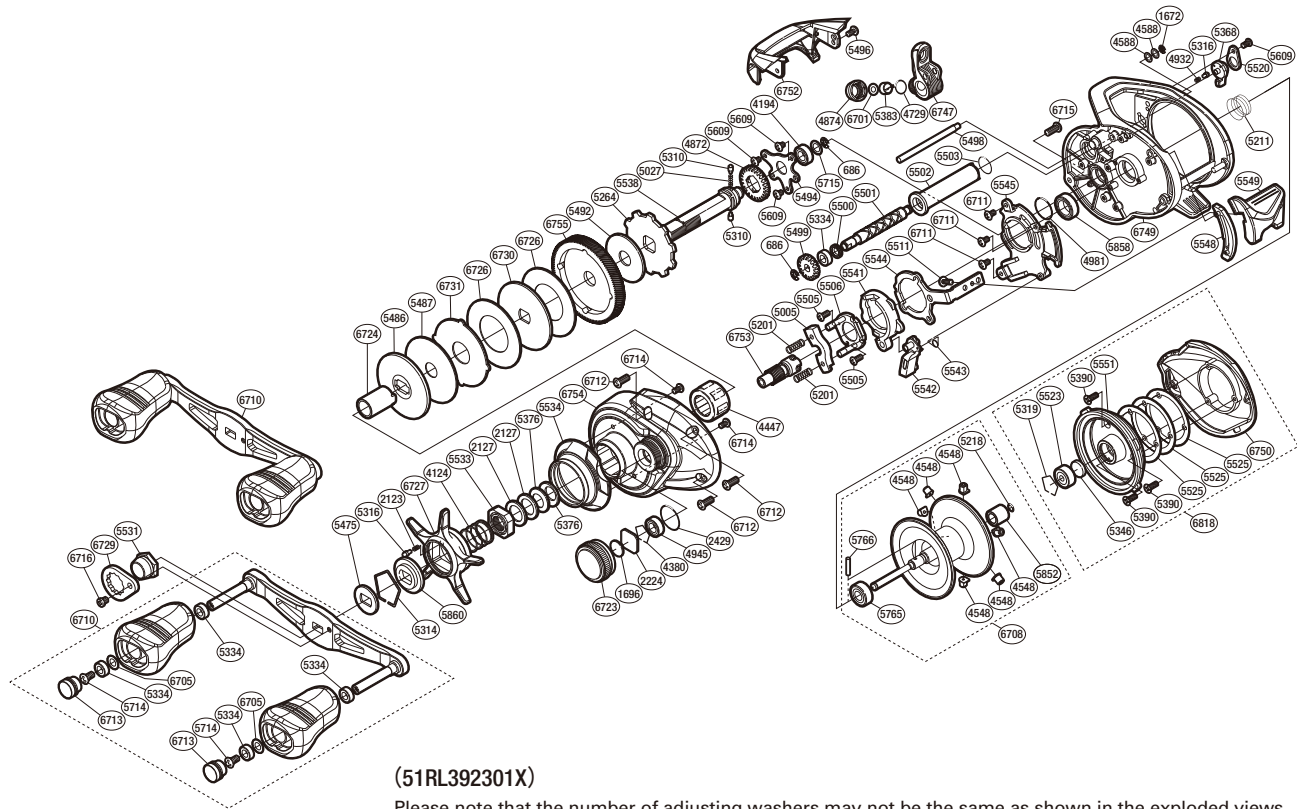


# SHIMANO

CURADO S A-RB

CU301HGK



(51RL392301X)

Please note that the number of adjusting washers may not be the same as shown in the exploded views. (Adjustment will vary with each individual product.)

| Part No. | Description              | Part No. | Description              | Part No. | Description               |
|----------|--------------------------|----------|--------------------------|----------|---------------------------|
| BNT0686  | E Lock                   | BNT5390  | Screw                    | BNT5765  | Ball Bearing              |
| BNT1672  | E Lock                   | BNT5475  | Drive Shaft Shield       | BNT5766  | Spool Clutch Pin          |
| BNT1696  | Cast Control Spacer (B)  | BNT5486  | Key Washer               | BNT5852  | Spool Shaft Bushing       |
| BNT2123  | Click Spring             | BNT5487  | Drag Washer              | BNT5858  | Ball Bearing              |
| BNT2127  | Star Drag Spacer         | BNT5492  | Drag Washer              | BNT5860  | Star Drag Click Plate     |
| BNT2224  | Spool Tension Spacer (A) | BNT5494  | Drive Shaft Retainer     | BNT6701  | Spacer                    |
| BNT2429  | O Ring                   | BNT5496  | Screw                    | BNT6705  | Washer                    |
| BNT4124  | Star Drag Spring         | BNT5498  | Stabilizer Bar           | BNT6708  | Spool Assembly            |
| BNT4194  | Ball Bearing             | BNT5499  | Idle Gear                | BNT6710  | Handle Assembly           |
| BNT4380  | Retainer                 | BNT5500  | Worm Shaft Seal          | BNT6711  | Screw                     |
| BNT4447  | Roller Clutch Bearing    | BNT5501  | Worm Shaft               | BNT6712  | Screw                     |
| BNT4548  | Brake Collar             | BNT5502  | Level Wind Guard         | BNT6713  | Handle Knob Seal          |
| BNT4588  | Washer                   | BNT5503  | O Ring                   | BNT6714  | Screw                     |
| BNT4729  | O Ring                   | BNT5505  | Screw                    | BNT6715  | Screw                     |
| BNT4872  | Idle Gear                | BNT5506  | Clutch Cam Retainer      | BNT6716  | Screw                     |
| BNT4874  | Pawl Cap                 | BNT5511  | Screw                    | BNT6723  | Cast Control Cap          |
| BNT4932  | Click Spring             | BNT5520  | Cam Lever Retainer       | BNT6724  | Roller Clutch Inner Tube  |
| BNT4945  | Ball Bearing             | BNT5523  | Ball Bearing             | BNT6726  | Drag Washer               |
| BNT4981  | O Ring                   | BNT5525  | Washer                   | BNT6727  | Star Drag                 |
| BNT5005  | Yoke                     | BNT5531  | Handle Nut               | BNT6729  | Handle Nut Plate          |
| BNT5027  | Idle Gear Spring         | BNT5533  | Star Drag Nut            | BNT6730  | Key Washer                |
| BNT5201  | Yoke Spring              | BNT5534  | Clutch Button Attachment | BNT6731  | Eared Washer              |
| BNT5211  | Bearing Pressure Spring  | BNT5538  | Drive Shaft              | BNT6747  | Line Guide                |
| BNT5218  | O Ring                   | BNT5541  | Clutch Cam               | BNT6749  | Frame                     |
| BNT5264  | Anti-Reverse Ratchet     | BNT5542  | Clutch Pawl              | BNT6750  | Right Side Plate          |
| BNT5310  | Idle Gear Pin            | BNT5543  | Clutch Pawl Spring       | BNT6752  | Level Wind Protector      |
| BNT5314  | Click Plate Retainer     | BNT5544  | Clutch Plate             | BNT6753  | Pinion Gear               |
| BNT5316  | Click Pin                | BNT5545  | Clutch Guard             | BNT6754  | Left Side Plate           |
| BNT5319  | Bearing Retainer         | BNT5548  | Clutch Bar Guide         | BNT6755  | Drive Gear                |
| BNT5334  | Bushing                  | BNT5549  | Clutch Button            | BNT6818  | Right Side Plate Assembly |
| BNT5346  | Spacer B                 | BNT5551  | Dial Case Assembly       |          |                           |
| BNT5368  | Side Plate Cam Lever     | BNT5609  | Screw                    |          |                           |
| BNT5376  | Drag Spring Washer       | BNT5714  | Screw                    |          |                           |
| BNT5383  | Line Guide Pawl          | BNT5715  | Drive Shaft Washer       | BNT4692  | B-100 Oil (Accessory)     |