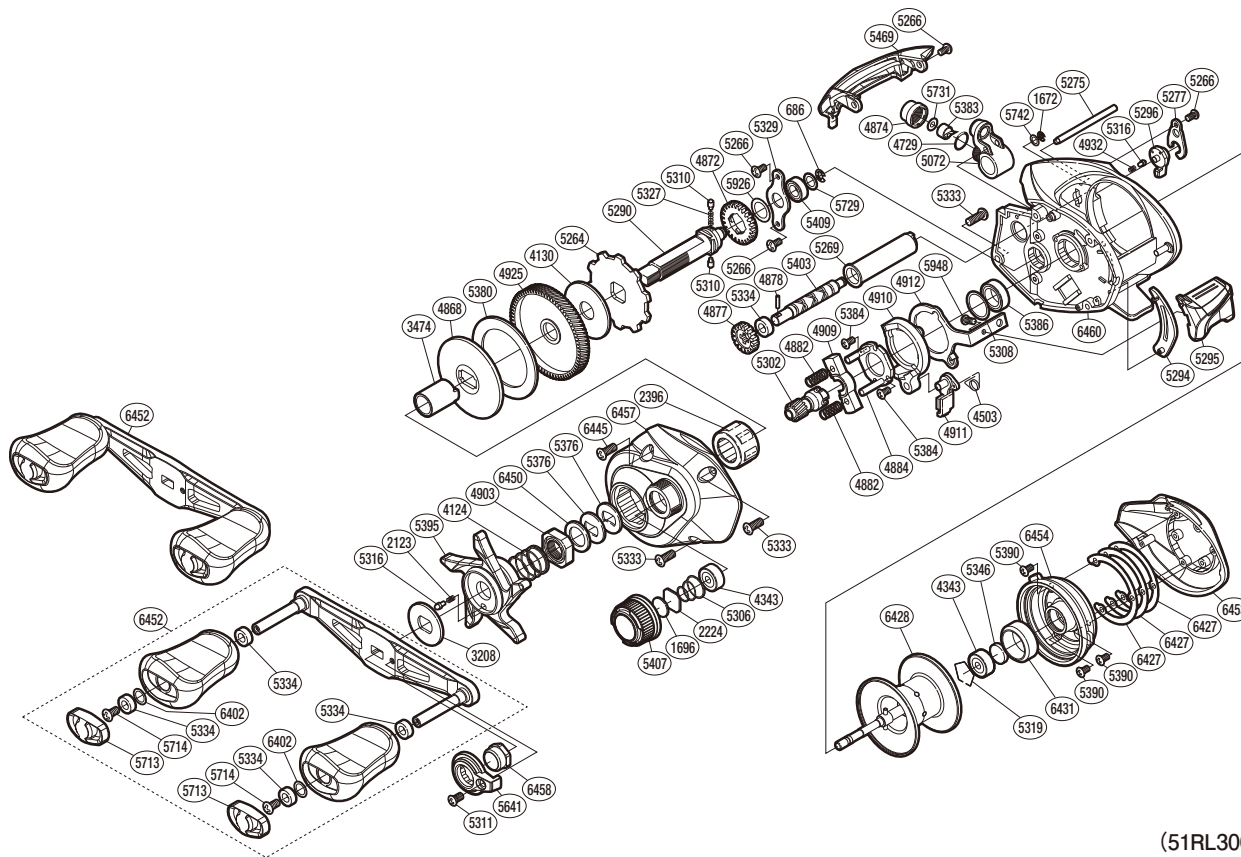


SHIMANO

CAIUS

CIS151HGB



(51RL300151X)

#	Part No.	Description	#	Part No.	Description	#	Part No.	Description
686	105NK	E Lock	5072	10NVR	Line Guide Pawl Holder Assembly	5390	10LA4	Screw
1672	105NC	E Lock	5264	10D73	Anti-Reverse Ratchet	5395	10R0H	Star Drag
1696	10896	Cast Control Spacer (B)	5266	10R1R	Screw	5403	10TPN	Worm Shaft
2123	10BT2	Click Spring	5269	10NFX	Level Wind Guard	5407	10DQE	Cast Control Cap
2224	1085F	Cast Control Spacer (A)	5275	10QSH	Stabilizer Bar	5409	10DQF	Drive Shaft Bushing
2396	10F5C	Roller Clutch Bearing	5277	10BGR	Cam Lever Retainer	5469	1024S	Level Wind Protector
3208	10J22	Star Drag Click Plate	5290	105CH	Drive Shaft	5641	10SSK	Handle Nut Plate
3474	10MAY	Roller Clutch Inner Tube	5294	10976	Clutch Bar Guide B	5713	10SS2	Handle Knob Seal
4124	10A70	Star Drag Spring	5295	10CDS	Clutch Button	5714	10LFA	Screw
4130	10CHX	Drag Washer A	5296	10BAZ	B Side Plate Cam Lever	5729	1003V	Washer
4343	105C3	Ball Bearing	5302	10CSD	Pinion Gear	5731	1003S	Washer
4503	104CQ	Clutch Pawl Spring	5306	10TMT	Spool Tension Spring	5742	10S42	Washer
4729	108WQ	O Ring	5308	10190	Washer	5926	1023S	Washer
4868	10D3H	Key Washer	5310	10HJG	Idle Gear Pin	5948	10LF4	Screw
4872	10J47	Idle Gear A	5311	10LFC	Screw	6402	10SDH	Washer
4874	10FJB	Pawl Cap	5316	10MFC	Click Pin	6427	10R7U	Washer
4877	10FNV	Idle Gear C	5319	1054D	Bearing Retainer	6428	10R8P	Spool Assembly
4878	10AEZ	Worm Shaft Pin	5327	10JDY	Idle Gear Spring	6431	10SPP	Brake Ring
4882	10487	Yoke Spring	5329	109T1	Drive Shaft Retainer	6445	10LT1	Screw
4884	10F3X	Clutch Cam Retainer	5333	10LFC	Screw	6450	10J1P	Star Drag Spacer
4903	10A3U	Star Drag Nut	5334	10PXZ	Handle Knob Bushing B	6452	10R67	Handle Assembly
4909	1046W	Yoke	5346	10EX5	Drag Spacer	6453	10RDJ	Right Side Plate
4910	10K0P	Clutch Cam	5376	109F5	Bearing Spacer Washer	6454	10SF3	Dial Case
4911	10MQM	Clutch Pawl Assembly	5380	10R3D	Drag Washer C	6457	1023B	Left Side Plate
4912	10QGJ	Clutch Plate	5383	10BHQ	Line Guide Pawl	6458	10SYP	Handle Nut
4925	10CME	Drive Gear	5384	10L1R	Screw	6460	10R7T	Frame Assembly
4932	10GQZ	Click Spring	5386	10EX6	Ball Bearing			

Please note that the number of adjusting washers may not be the same as shown in the exploded views.
(Adjustment will vary with each individual product.)

(230804)_002