

SPEAKMAN® S-3231

Bedpan Washer

FEATURES:

- Chrome plated brass bedpan washer combination.
- Polished chrome plated brass wall mounted double pedal self-closing valve.
- Renewable operating units on valve.
- 1/2 in. NPTF exposed inlets and outlet.
- Elevated vacuum breaker.
- Supply ell with 1/2 in. NPTF inlet and wall flange.
- 72 in. white vinyl reinforced hose.
- Insulated handle, spray outlet and wall hook.

FINISH:



PC

OPTIONS:

Add suffix to model #

- Self-closing valve on handle -SCV
- Keyed union angle stops -UAS
- Keyed union separate stops -USS

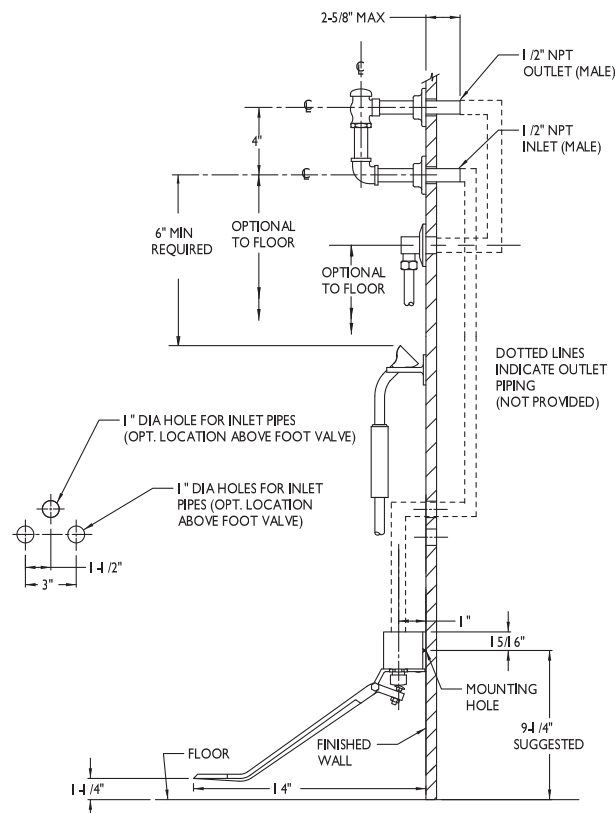
WARRANTY:

- 5 year limited



DIMENSIONS:

NOTE: 1. Inlets & outlets are 1/2" NPT female unless otherwise specified. 2. Location of wall hook is optional but restricted by 69" hose length running from supply ell to insulated handle. 3. All dimensions are in inches (millimeters) unless otherwise specified and are subject to change without notice.



Architect/Engineer Approval Space:

SPEAKMAN
400 ANCHOR MILL ROAD
NEW CASTLE, DE 19720

P: 800-537-2107
F: 800-977-2747
W: WWW.SPEAKMAN.COM
R: AUGUST 2017