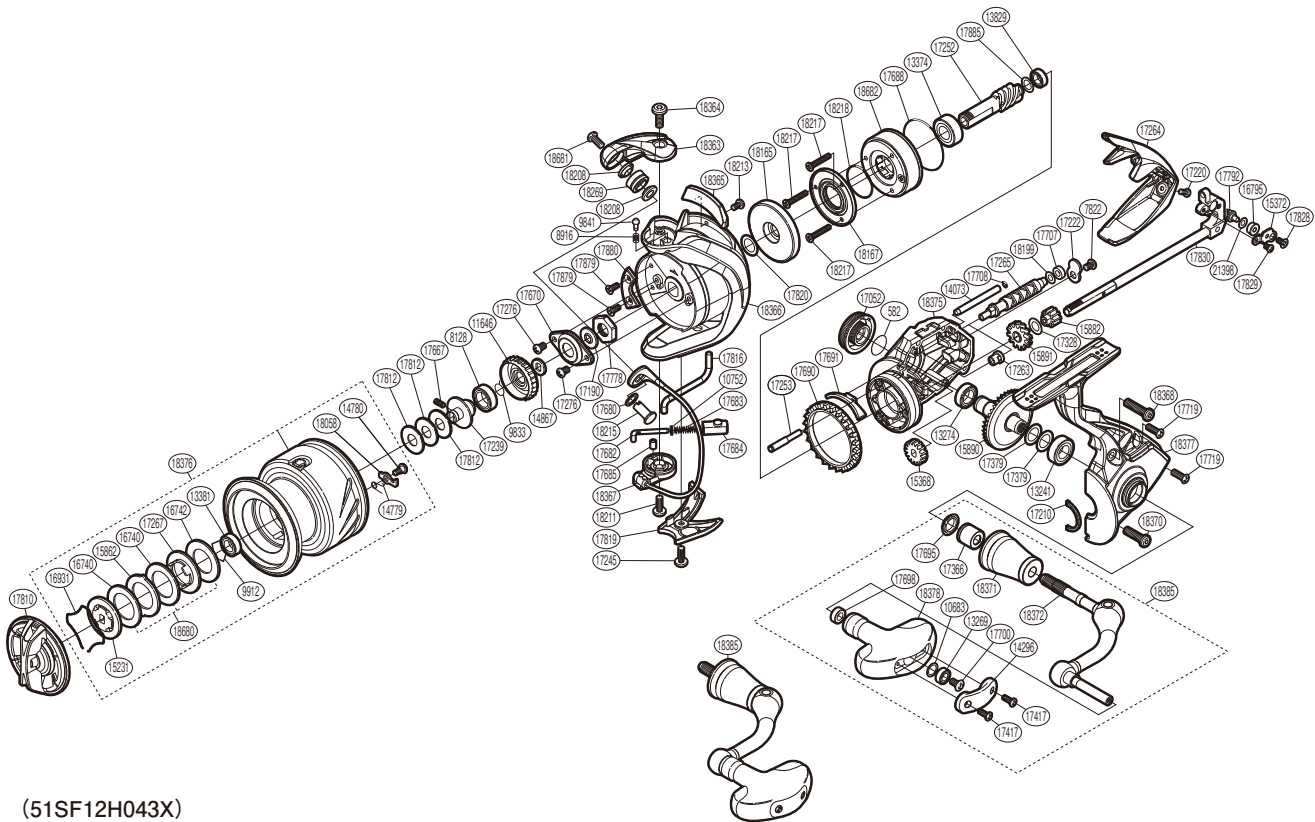


SHIMANO

SUSTAIN

SA-4000XGFI



(51SF12H043X)

#	Part No.	Description	#	Part No.	Description	#	Part No.	Description
582	108WH	O Ring	17239	10LWG	Spool Bushing	17829	10L67	Screw
7822	103KW	Screw	17245	10PSA	Screw	17830	10DMZ	Main Shaft Assembly
8128	10KXC	Ball Bearing	17252	10C53	Pinion Gear	17879	10LA3	Screw
8916	10CH0	Click Spring	17253	10CLE	Idle Gear B Shaft	17880	101ZJ	Counterweight
9833	107V2	Ratchet Spring	17263	106MB	Worm Bushing (Front)	17885	10HEP	Washer
9841	10CHA	Click Pin	17264	10NNG	Rear Protector	18058	101Y2	Drag Click
9912	10GEW	Bearing Retainer	17265	1068J	Worm Shaft	18165	10SYA	Rotor Ring
10683	10HTT	Washer	17267	10BCG	Key Washer	18167	10SYJ	Roller Clutch Reinforce
10752	10TYE	Bail Spring Guide A Support	17276	10PME	Screw	18199	10ECK	Washer
11646	107PS	Drag Click Ratchet	17328	10B7U	Washer	18208	10TJM	Spacer
13241	104JD	Ball Bearing	17366	10PQL	Handle Shaft Cover B	18211	10TLM	Screw
13269	104VX	Ball Bearing	17379	10GR3	Washer	18213	10TLH	Screw
13274	104PP	Ball Bearing	17417	10L1T	Screw	18215	10TLK	Line Roller Support
13374	104Q5	Ball Bearing	17667	10PN3	Set Screw	18217	10TJP	Screw
13381	104JT	Ball Bearing	17670	10TRH	Rotor Nut Lock Plate	18218	10EAY	Roller Clutch O Ring
13829	104JZ	Ball Bearing	17680	1018Z	Washer	18269	10RY0	Line Roller Set
14073	10337	Oscillating Guide	17682	1061L	Bail Spring Guide A	18363	10DGN	Bail Arm
14296	10PY1	Handle Knob I.D. Plate	17683	105R6	Bail Spring	18364	10TM6	Screw
14779	10QBQ	Drag Click Spring	17684	107AB	Bail Spring Seat	18365	10001	Counterweight Assembly
14780	10A6F	Screw	17685	10TRC	Bail Spring Guide A Bush	18366	10DGP	Rotor
14867	103PE	Spool Support	17688	10MLU	O Ring	18367	10002	Bail Assembly
15231	10QBU	Key Washer	17690	104FV	Friction Ring	18368	10U0A	Screw
15368	10HBH	Idle Gear	17691	10TQF	Bail Trip Strike	18370	10U09	Screw
15372	10HAE	Oscillating Pawl Cover	17695	10PXV	Handle Trip Seal	18371	10DGL	Handle Shaft Cover
15862	102XW	Eared Washer	17698	10PXZ	Handle Knob Bushing	18372	10003	Handle Shank Assembly
15882	106RH	Idle Gear B (Small)	17700	10LFA	Screw	18375	10DGM	Body
15890	10AAV	Drive Gear	17707	106CN	Worm Bushing (Rear)	18376	10TV3	Spool Assembly
15891	10CNR	Idle Gear B (Large)	17708	10JAC	O Ring	18377	10S0H	Side Cover
16740	10345	Drag Washer	17719	10M2G	Screw	18378	10S0G	Handle Knob
16742	10C1A	Drag Washer	17778	10TPL	Rotor Nut	18385	101MB	Handle Assembly
16795	10JXT	Oscillating Slider Bushing	17792	106UZ	Oscillating Pawl	18680	10SAD	Washer
16931	10B8N	Drag Washers Retainer	17810	10DLW	Drag Knob	18681	10PMH	Screw
17052	10N4J	Handle Screw Cap	17812	10BSL	Spool Washer	18682	10S16	Roller Clutch Assembly
17190	107L4	Bearing Water Proof	17816	10DMA	Bail Trip Lever	21398	10RKQ	Washer
17210	10CBD	Flange Water Proof	17819	10DNZ	Bail Hold Support Guard			
17220	10PRZ	Screw	17820	10GR6	Washer	18054	10G4L	Anti Line Slip Sticker (accessory)
17222	10ATJ	Worm Shaft Retainer	17828	10QVK	Screw			

Please note that the number of adjusting washers may not be the same as shown in the exploded views. (Adjustment will vary with each individual product.)