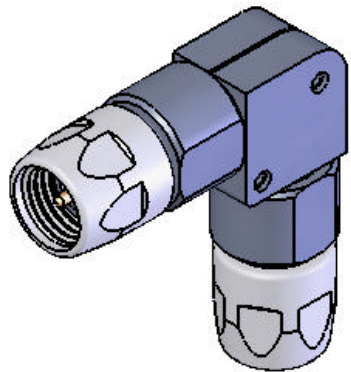


This document, including the design, configuration and mechanical features revealed herein are the sole, confidential and proprietary property of TRU Corporation. Reproduction or use thereof, in whole or part, is prohibited without the prior written consent of TRU Corporation.

REV.	DESCRIPTION	DATE	APPROVED
-	ORIGINAL ISSUE	10/06/08	AM



ENGINEERING DATA

ELECTRICAL:

FREQUENCY RANGE: DC to 35GHz
VSWR MAX: 1.45:1

INSERTION LOSS MAX: .06 X $\sqrt{\text{FREQ (GHz)}}$

MECHANICAL:

INTERFACE PER IEEE 287

MATERIAL:

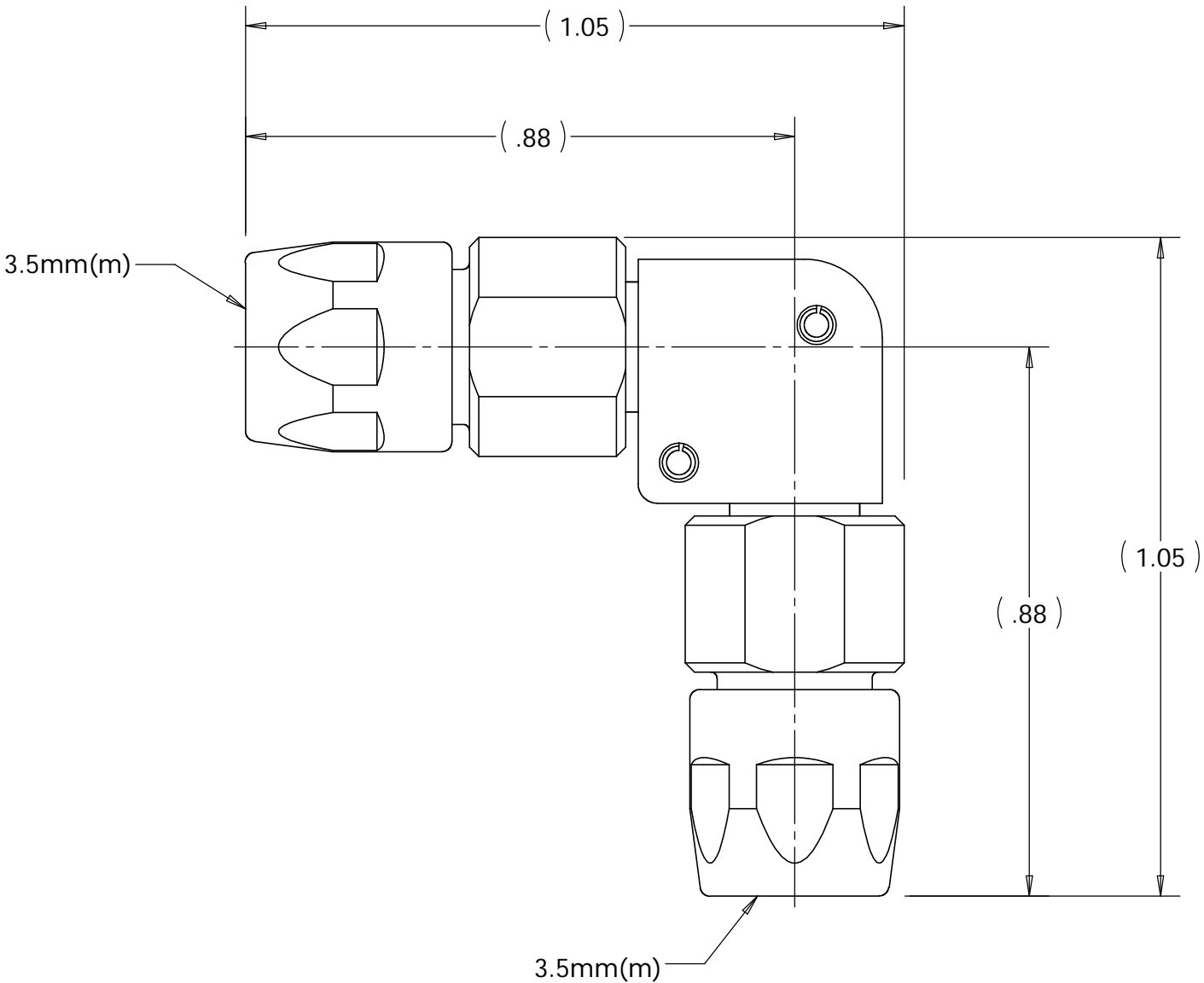
BODIES: STAINLESS STEEL
COUPLING NUTS: STAINLESS STEEL
CONTACTS: BERYLLIUM COPPER
SUPPORT BEADS: TPX



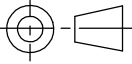
FINISH:

BODIES: PASSIVATED
COUPLING NUTS: PASSIVATED
CONTACTS: GOLD PLATED

NOTES:

1. ALL DIMENSIONS SHOWN ARE REFERENCE ONLY.



MATERIAL	DO NOT SCALE DRAWING	DRAWN AM	DATE 09/30/08	 TRU CORPORATION 245 LYNNFIELD STREET, PEABODY, MA 01960 <small>The Custom Interconnect Leader™</small>		
	UNLESS OTHERWISE SPECIFIED: DIMENSIONS ARE IN INCHES TOLERANCES: FRACTIONS: $\pm 1/64$.XX : $\pm .01$.XXX: $\pm .005$ ANGLES: $\pm 1/2^\circ$ MACHINED SURFACES: 63/ 	ENG APPR. AM	DATE 09/30/08			
		MFG APPR.	DATE			
		OTHER APPR. MVC	DATE 10/02/08			
COMMENTS:	THIRD ANGLE PROJECTION 		TITLE: 3.5mm(m) to 3.5mm(m) R/A ADAPTER		REV -	
			SIZE B	DWG. NO. TRU-11211-RA		
surface area: sq inch	weight: lbs	CAGE CODE: 92180		SCALE: 4:1	SHEET 1 OF 1	