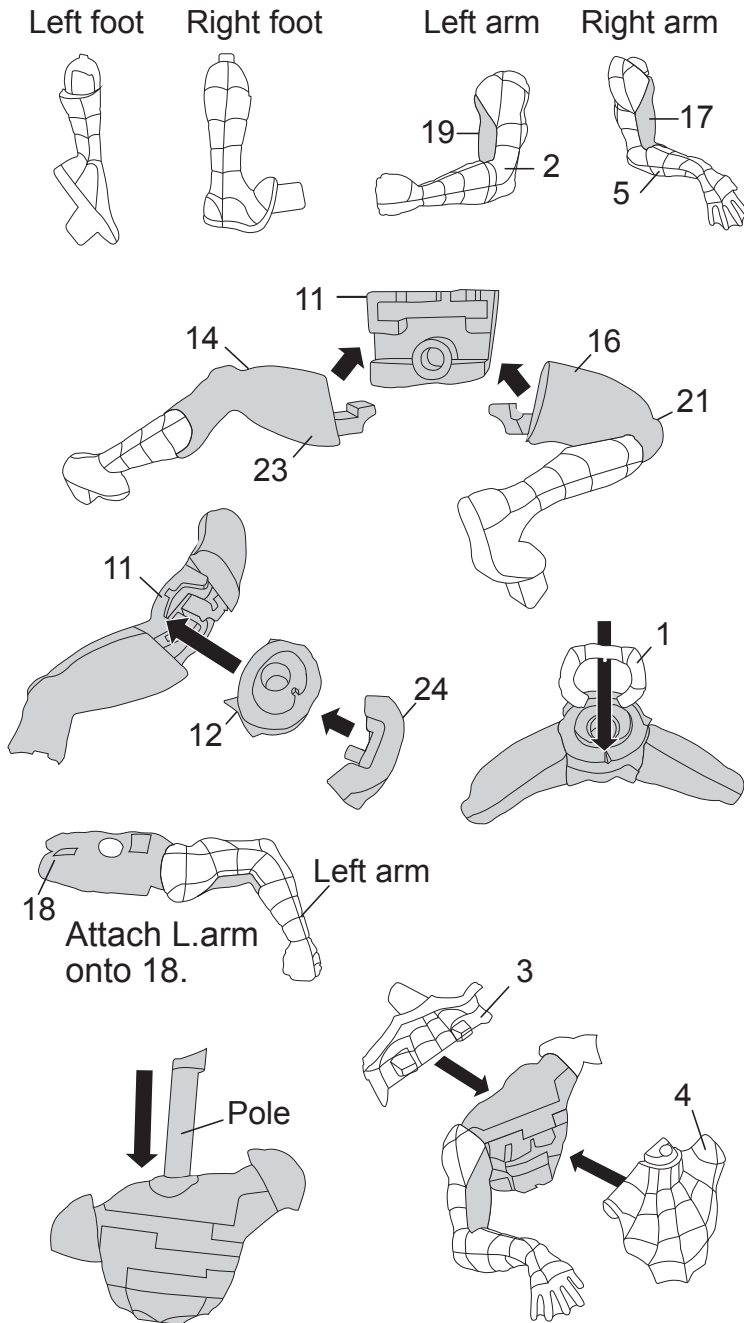


INSTRUCTIONS

1. Please count and make sure all pieces are present before assembly.
2. The pole pieces are delicate. To prevent damage, do not use excessive force.
3. Assemble crystal puzzle by putting the puzzle pieces together in the order shown below.
4. Piece numbers are not necessarily in the order of assembly. Some pieces do not have numbers.
5. Missing a piece? Email consumer@ugames.com or call (866) 853-8970 with missing piece number.

Step	Piece No.		Step	Piece No.	
1	Left arm	19	20	13	
2	arm	2	21	Right arm	
3	Left hand		22	22	
4	Right arm	17	23	26	
5	arm	5	24	Attach L.arm onto piece#18	
6	Right hand		25	18	
7	Left leg	14	26	Pole	
8	leg	23	27	4	
9	Left foot		28	3	
10	Right leg	21	29	Head	
11	leg	16	30	Face	
12	Right foot		31	9	Base
13	Insert legs into piece#11		32	10	
14	12		33	8	
15	24		34	6	
16	1		35	7	
17	20		Insert legs into base. Apply the stickers to the chest and back.		
18	15				
19	25				

HINTS



© MARVEL
 © 2024 HANAYAMA CO.,LTD. Japan All Design and Copy Rights Reserved.
 This product is produced and distributed under license of Beverly Enterprises Inc. & Jeruel Ind.Co.Ltd.
 © 2024 University Games Corporation, San Francisco, CA 94110. All Rights Reserved.

See our entire line of games and puzzles at

