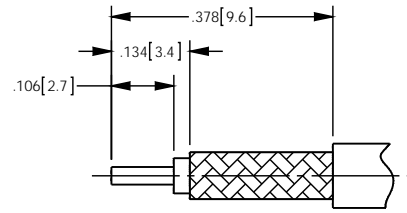


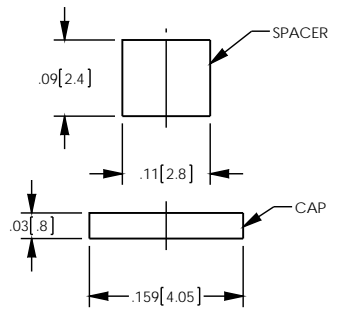
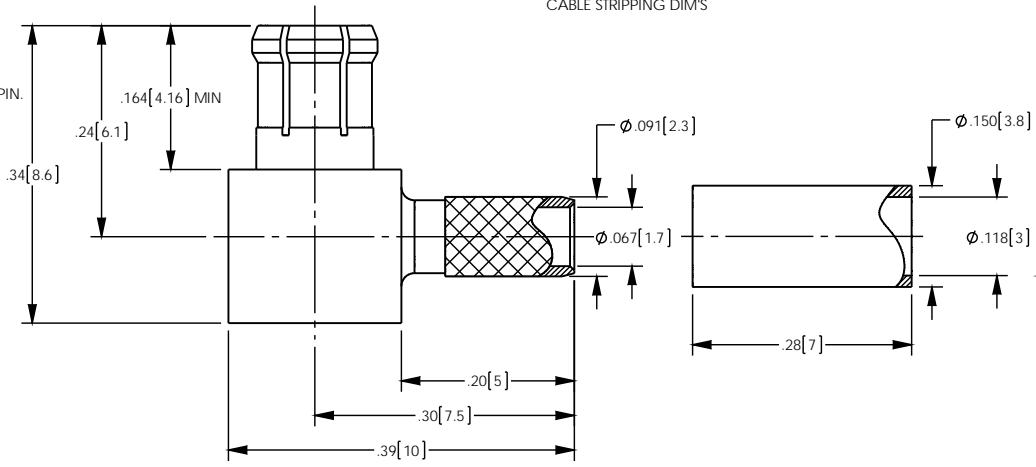
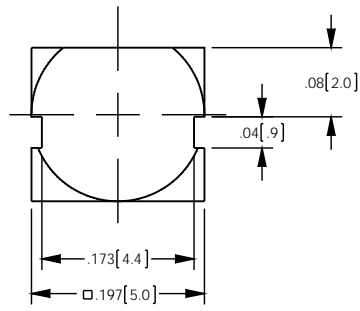
NOTES: UNLESS OTHERWISE SPECIFIED

1. FOR USE WITH RG-316 OR EQUIVALENT CABLE.
2. MATERIAL SPECIFICATIONS:
 INSULATORS: PTFE
 SPACER: DELRIN
 OUTER CONTACT: BERYLLIUM COPPER
 ALL OTHER METAL PARTS: BRASS
3. FINISH SPECIFICATIONS:
 CONTACT: .000003 MIN THICK GOLD OVER .000050 MIN THICK NICKEL
 ALL OTHER METAL: THIN GOLD OVER .000050 MIN THICK COPPER
4. ELECTRICAL SPECIFICATIONS:
 IMPEDANCE: 50 OHMS
 FREQUENCY RANGE: DC TO 6 GHz
 VSWR: 1.5 MAX
5. CAP, SPACER AND FERRULE SHIPPED LOOSE
6. CRIMP FERRULE (.128 HEX) AND SOLDER TO CONTACT PIN.

REV	DESCRIPTION	BY DATE	APPD
A	ER058863	JL 06/29/15	DCAM



RECOMMENDED
CABLE STRIPPING DIM'S



CATALOG P/N: 1213A204M

PER ASME Y14.5M-1994 UNLESS OTHERWISE SPECIFIED, DIMENSIONS ARE IN INCHES (MM)			
TOLERANCES:			
DECIMAL: .XX [XX] ± .01 [0.3]			
XXX [XXX] ± .005 [0.13]			
XXXX [XXXX] ± .0005 [0.013]			
ANGLES: ± 2°			
SCALE: 6:1		THIRD ANGLE	
CUSTOMER SALES DRAWING			
DRAWN	DATE	APPROVED	DATE
JL	06/24/2015	JL	06/29/2015
APPROVED	DATE	APPROVED	DATE
DCAM	06/29/2015	XXX	XX/XX/XX



MCX R/A CRIMP PLUG
(FOR RG-174/U, 188A/U, 316/U)

A	1213A204M	SHT	OF	REV
		1	1	A