

# SW28R

BATTERY RIDE-ON SWEEPER



**HILLYARD**  
  
The Cleaning Resource®

 **TRIDENT®**

Better Built. Better Equipment.

Better Built. Better Equipment.



Intelligent Design



Exceptional Engineering

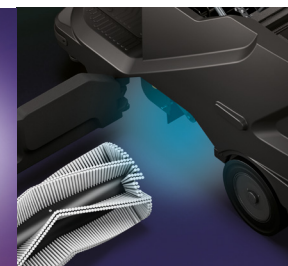


Innovative Technology

The Trident SW28R ride-on battery-powered sweeper redefines cleaning efficiency with a host of exceptional features. Its adaptability shines through as it effortlessly tackles both indoor and outdoor environments, transitioning between hard floors and carpets with a simple brush change. The user benefits from excellent sight lines, ensuring precision in cleaning tasks. Comfort is prioritized, courtesy of the cushioned seat and ergonomically designed steering wheel that prioritize the operator's well-being.

With a substantial 105-liter debris hopper equipped with wheels, emptying is easy and efficient, minimizing downtime. The Trident SW28R boasts an impressive 39-inch cleaning path, covering up to 97,950 square feet per hour. Its versatility extends further with a built-in vacuum cleaner featuring a long wand, enabling users to reach areas beyond where the sweeper can drive.

Another standout feature is the optional HEPA air filter, capturing 99.9 percent of particles smaller than 0.3 microns, enhancing air quality during the cleaning process. In essence, the Trident SW28R stands as a powerhouse, combining efficiency, comfort, and versatility to redefine the standards of ride-on sweepers.



Better Built. Better Equipment.



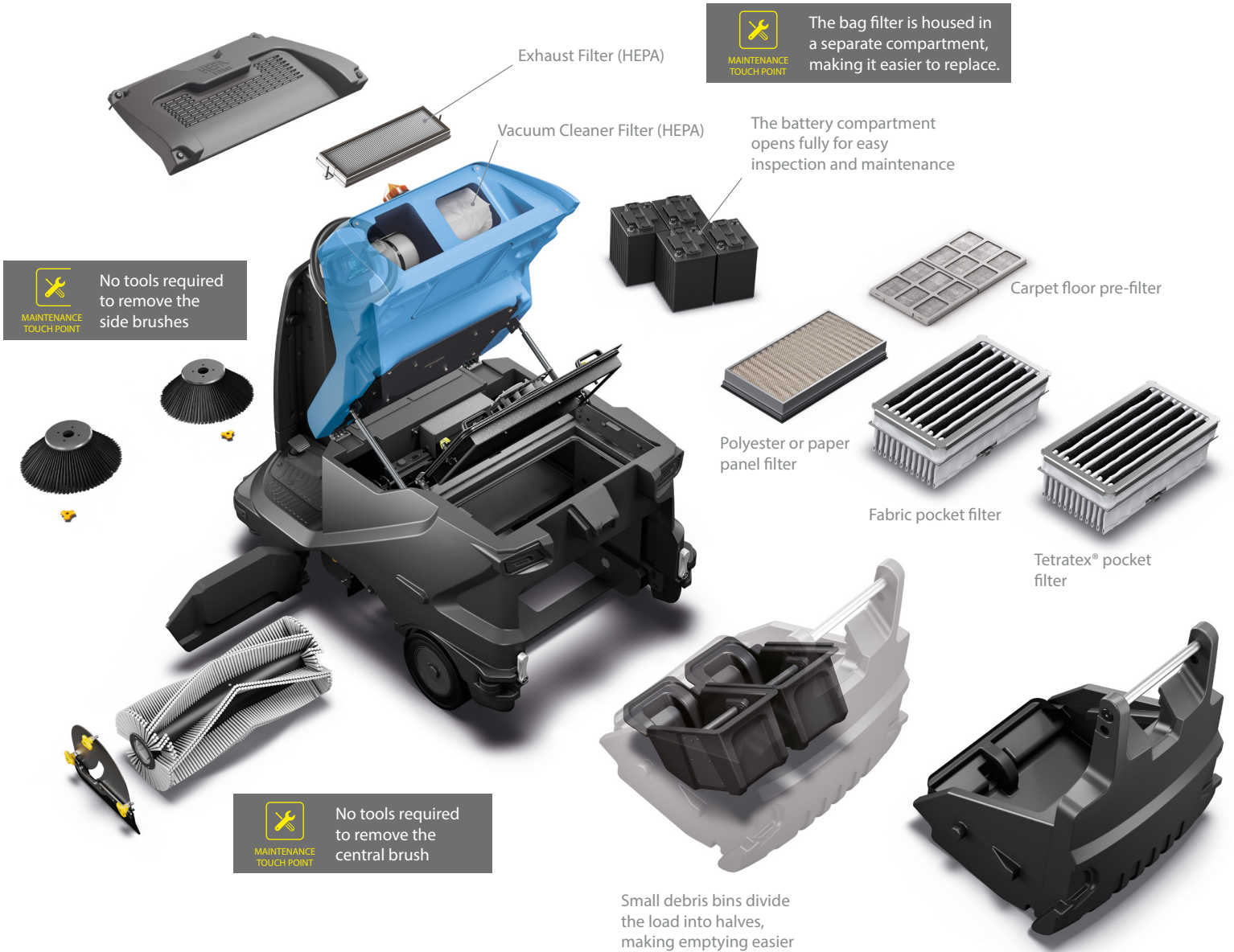
Intelligent Design




Exceptional Engineering





Innovative Technology



 The bag filter is housed in a separate compartment, making it easier to replace.

The battery compartment opens fully for easy inspection and maintenance

 No tools required to remove the side brushes

 No tools required to remove the central brush

Small debris bins divide the load into halves, making emptying easier

Easily remove and replace the debris filter with the help of a central wheel that guides its movement

*Good design prioritizes easy access to important components, making routine inspection and maintenance simple and easy.*

Better Built. Better Equipment.



Intelligent Design



Exceptional Engineering



Innovative Technology

*Effective sweeping on the first pass.  
Get more out of every cleaning.*



**SIDE BRUSHES**  
to channel dirt into  
the central area

**DEBRIS FLAP**  
lift to allow large  
debris into the hopper

**HIGH CAPACITY**  
hopper holds up to 28  
gallons (105 L) of debris

**FORCE TECHNOLOGY**  
ensures constant  
brush pressure

Force Technology, standard on every machine, keeps the brush in contact with the floor at all times. It automatically adjusts brush pressure over uneven surfaces or protrusions, producing a uniform cleaning result.



Better Built. Better Equipment.



Intelligent Design

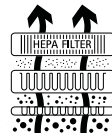


Exceptional Engineering



Innovative Technology

Three filtration steps remove fine particles from the air, improving air quality.



### SAFE AIR TECHNOLOGY: multi-stage filtering system

A 3-level filtering system cleans the air. The Optional HEPA filter captures extremely small particles, thereby protecting the health of the operator and the other people in the area.



#### HEPA filter

High filtering capacity with the finest dust



#### Polyester or paper panel filter

Pocket filter in fabric or Tetratex®



#### Pre-filter

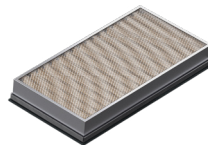
When cleaning carpet floors, the first filtering level blocks and captures large particles to protect the next filters



#### AUTOMATIC FILTER SHAKER

Ensures filtering performance is maintained over time, shaking the filter regularly to prevent clogging and extend its lifespan

## Filter Options



#### Polyester Panel

- Standard Filter
- Good Filtration
- Light Dust Areas



#### Fabric Pocket

- Optional Filter
- Better Filtration
- Medium Dust Areas



#### Tetratex Pocket

- Optional Filter
- Best Filtration
- High Dust Areas
- Excellent Dust Release During Shaking

Better Built. Better Equipment.

USER EXPERIENCE	SW28R
Cruise control	•
Eco Mode	•
Maintenance due warning	•
Membrane control panel	•
<b>COMFORT</b>	
Hour meter	•
Vacuum ON/OFF (to protect the filter when cleaning damp surfaces)	•
Basic seat	•
Driver seat with armrest and safety belt	◦
On-board battery charger (Battery charger sold separately)	◦
Dual inner container	•
Set of cleaning accessories (side plate with clips, tub, bag-holder)	◦
Automatic brush lifting system	•
<b>PRODUCTIVITY</b>	
Extra pressure	•
On-board vacuum cleaner with 3-stage vacuum motor and HEPA bag filter	•
Automatic filter shaker with timer	•
Manual filter shaker	•
Front flap lifting device to facilitate the collection of bulky dirt	•
HFM (Hillyard Fleet Management)	◦
Front anti-dust skirt	◦
Two side brushes	•
Force technology (guarantees uniform cleaning on uneven surfaces)	•
<b>SAFETY</b>	
Blinking light	•
Driving LED lights (front-rear)	◦
LED service lights	◦
Adjusts power for smooth ramp climbing	•
Automatic breaking when accelerator pedal is released	•
Descent control - Maintains constant speed when going downhill	•
ESC (Electronic Stability Control) - Reduces speed when turning w/o brake	•
Emergency Stop	•
Pneumatic rear wheels for outdoor use and uneven surfaces	◦
Overhead guard*	◦
Blue safety spotlight	◦
Bull bar	◦
Mechanical drum brakes	•
Electrobrake	•
Side brushes that retract in the event of impact	•
<b>ENVIRONMENT</b>	
Paper panel filter	◦
Polyester panel filter	•
Fabric pocket filter**	◦
Tetratex® pocket filter**	◦
Carpet floor pre-filter***	◦
HEPA output air filter	◦
Start&Stop - Automatically switches off motors when not moving	•

\* Also requires bull bar

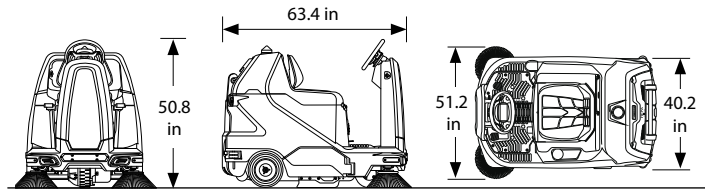
\*\* These two filters cannot be installed together

\*\*\* Cannot be installed with the Tetratex filter

• Standard Item ◦ Optional Item

\*Run times are based on continuous sweeping run times.

The weights are calculated on the basis of a standard reference model.



TECHNICAL DATA		SW28R (Item HIL56039)
Productivity theoretical	up to sqft/h	97,950
<b>SWEEPING UNIT</b>		
Working width with central cylindrical brush	in	28
Working width with two side brushes	in	51.2
Brush motors (central/side)	(no.) V/W	(1) 24/460 - (2) 24/115
Brush rpm (central/side)	rpm	640/70
<b>DIRT COLLECTION SYSTEM</b>		
Maximum debris hopper volume	l	105
<b>FILTERING SYSTEM</b>		
Paper panel filter filtration degree	µm	14
Polyester panel filter filtration degree	µm	15
Fabric pocket filter filtration degree	µm	5
Tetratex® pocket filter filtration degree	µm	0.3
HEPA output air filter filtration degree	µm	99.9% efficiency
<b>BATTERIES</b>		
Supply/traction	V	24
Battery Options	(no.) V/Ah	(2) 12V/128 AH TPPL (2) 12V/130 AH WET
Battery run time*	hours	up to 2.0 hours
<b>PROPELLING SYSTEM</b>		
Forward working speed	mph	4.4
Transport speed	mph	5
Gradeability (Working / Transport at gross weight / Trailer ramp at net weight)	%	12.5 / 14 / 20
Traction motor	(no.) V/W	(1) 24/750
<b>SPECIFICATIONS</b>		
Machine dimensions (L x h x w)	in	63.4 50.8 40.2
Machine weight empty without batteries	lbs	628
Machine weight empty with batteries	lbs	818 (TPPL) 700 (WET)
GVW (Gross Vehicle Weight)	lbs	1402 (TPPL) 1344 (WET)
Sound pressure level (ISO 11201) Eco Mode	dB (A)	< 70
Minimum aisle turn	in	79

## Brush Options

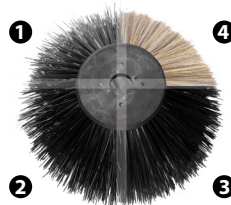
### Main Brush

- |                          |            |           |
|--------------------------|------------|-----------|
| 1. Polypropylene 0.3/0.7 | Light Duty | HIL456985 |
| 2. Polypropylene 0.7/1.1 | Standard   | HIL456783 |
| 3. Steel Mix             | Outdoor    | HIL456984 |
| 4. Natural Fiber         | Carpet     | HIL459750 |



### Side Broom

- |                          |            |           |
|--------------------------|------------|-----------|
| 1. Polypropylene 0.7     | Light Duty | HIL457641 |
| 2. Polypropylene 1.0     | Standard   | HIL429206 |
| 3. Polypropylene 0.7/1.1 | Heavy Duty | HIL429205 |
| 4. Natural Fiber         | Carpet     | HIL457571 |



**HILLYARD**  
The Cleaning Resource®

PO Box 909  
St. Joseph, MO 64502  
www.hillyard.com

LIT-SW28R-0324