



Flow Xtreme
PLUS

Cotton Tails

FX PLUS C/T 16" AG SYSTEM W/ 1/2HP PUMP

FX PLUS C/T 16" AG SYSTEM W/ 3/4HP PUMP



VER. 0120

NE4505 & NE4506

CONGRATULATIONS!

**YOU HAVE PURCHASED A HIGH QUALITY FlowXtreme Plus
FILTRATION SYSTEM FOR YOUR ABOVE GROUND POOL. YOUR
NEW FILTER SYSTEM HAS BEEN MANUFACTURED AND TESTED TO
OFFER MANY YEARS OF TROUBLE FREE SERVICE.**

IMPORTANT – READ THIS MANUAL CAREFULLY

A. Safety Warnings

Read all Warnings and Cautions noted below. Failure to do so could result in serious or fatal injury.

- Prior to installation of this unit, carefully read and adhere to all CAUTION, ATTENTION, and ADVICE notices located throughout this manual. Failure to comply with these instructions can cause serious injury, death, or damage to the unit.
- RISK OF SUCTION ENTRAPMENT HAZARD, WHICH, IF NOT AVOIDED CAN RESULT IN SERIOUS INJURY OR DEATH. Do not block pump suction at the pump or in the pool as this can cause severe injury or death.
- Electrical wiring MUST be installed by trained professional and adhere to local code and regulations.
- Avoid electric shock. DO NOT USE power extension cords.
- Connect ONLY to a Ground-Fault Circuit Interrupter (GFCI) power outlet. Consult a qualified professional electrician for safe and proper installation of a qualified electrical outlet.
- Incorrectly installed equipment may fail, causing severe injuries or damage to the pump-filter system.
- Never submerge the filter and/or pump in water.
- Never place the pump or filter in your pool.
- Trapped air in the pump-filter system may cause the TANK COVER to be blown off which can result in death, serious injury, or damage to the pump-filter system. Ensure all air is out of system before operating.
- ALWAYS unplug the system before changing the control valve.
- Install this product with sufficient safety margin from the pool to prevent children from using the system to access the pool.
- Never PLUG or UNPLUG this unit from an electrical source while standing in water.
- NEVER service this unit with electrical power cord connected.
- DO NOT operate the system while the pool is being used.
- KEEP CHILDREN AWAY from all electrical equipment.
- NEVER ALLOW CHILDREN TO OPERATE THIS EQUIPMENT.
- The Pool Owner should always exercise caution and common sense when utilizing their swimming pool and operating equipment.

B. General Information

This manual provides information relating to the installation, utilization and maintenance of our filtration system. We recommend that you read this manual in its entirety and keep it for future reference,

The pump included with the filtration system is a horizontal, self-priming centrifugal pump. For the pump to function correctly, the water temperature must not exceed 35°C/95°F. The materials used in the pump have undergone stringent hydraulic testing and electrical inspections.

The filter tank included in the filtration system consists of high-grade polypropylene (PP). It is manufactured as a single unit (absolutely corrosion resistant and resistant to commercially available swimming pool chemicals). (Prerequisite: Compliance with the standard recommended specifications for the pH- and chlorine value). It is equipped with a tank drainage system. The filter tank comes ready to attach with an approved filter pump with hair and lint basket, and a plastic base for ready on-site mounting.

Read this manual carefully before installation. The filtration system and pump must be installed in accordance with all federal and local codes and standards in effect for the area of installation.

We decline all responsibility for the consequences of failure to comply with the installation instructions. We recommend that you comply with the power source instructions to avoid overloading the pump motor and/or electric shock.

This filtration system is not intended for use by persons with reduced physical, sensory or mental capabilities, or lack of experience and knowledge.

Safety notes and information boxes should always be observed.

C. Safety Notes

Your filter pump was constructed and tested and left the manufacturing plant in technically operational condition. In order to maintain this condition and ensure safe operation, the user should observe the notes and product information contained in this technical manual. If there is any indication that safe operation is no longer possible, the device is to be disconnected from the power supply and secured against accidental use.

This is the case when:

- The device has visible damage.
- The device no longer appears functional.
- After long periods of storage in poor conditions.

If the power cord or other parts of this equipment are damaged, they have to be replaced by manufacturer or its service agent or a similarly qualified person in order to avoid danger.

D. Damage during delivery

Your filter system has been carefully and professionally packed for delivery. Please check to ensure that the package is undamaged and that all parts are in the box. If you purchased this product on order and the product was shipped to you, ensure that delivery is complete. Damage to product as a result of shipping is not the responsibility of the supplier and must be immediately reported to the shipper. The shipper assumes the liability for damages during delivery, the supplier is not responsible for it.

E. Implied Warranty

The manufacturer warranties safe operation and reliability only under the following conditions:

- The filter system is installed and operated according to the assembly and operating instructions.

- Only original replacement parts are used for repairs or replacements (consumable & expendable parts do not fall under the warranty).

Expendable parts that do not fall under the warranty include:

- All O-rings
- Pressure gauge
- Mechanical seal, complete
- Hoses and metal hose clamps

F. Resultant Damages

We cannot be responsible for damages to the product if the product is not used in accordance with the instructions provided.

G. Technical Data and Specifications

- The recommended filter run time is twice a day for 4 to 5 hours with floor vacuum cleaning as needed.
- The major components of your system are:

Filter pump, filter tank, tank lid, lid V-band with bolt & nut connecting base plate, and hose with fittings

(Confirm you have all these components before starting installation)

	NE4505	NE4506
Flow Volume (Q)	2100 GPH	2300 GPH
MAX Operating Pressure	22psi	22psi
Filtration Area	16"	16"
Rated Voltage	110V AC 60Hz	110V AC 60Hz
Power	1/2 HP	3/4 HP
Max. ambient temperature	95°F	95°F
Cotton Tails Volume	1 lbs	2.5 lbs

H. Unpacking your filter system

Carefully remove the product and all component parts from the box. Cross reference all parts in the box with the parts list reference chart to make certain all parts are present before beginning assembly.

NOTE: Some parts may be located within the filter tank. To access these parts, you must remove the tank cover.

Refer to Sections R & S for complete EXPLODED VIEW PARTS DIAGRAMS.

I. Power source instructions

1. The Above Ground filter pump system you have purchased is equipped with a standard electrical cord and plug which should only be connected to a power outlet protected by a 30 Amp Ground-Fault-Circuit-Interrupter (GFCI) that has been installed by a professional electrician and adheres to local codes and regulations.
2. To avoid electric shock, power cord extensions should not be used.

J. Positioning your filter system

- For the operation of this filter system with Above Ground pools, you need a skimmer installed in your pool. Either an integrated skimmer (built into the pool wall) or a suspended skimmer (attachment to the pool wall).
- The installation area must allow an adequate safety margin to the pool wall.

- We recommend putting the filter system on a concrete slab or similar. Be sure the installation is level.
- Additional installation accessories such as hoses, hoses clamps are available from your pool dealer.

K. Filter-Pump assembly

1. Water pump & Base Plate assembly

- a) Secure water pump to base plate with the provided pump mounting hardware. Orient as shown. (Figure 5)

2. Pump Fittings Assembly (Figure 6)

- a) Screw the 1¼"-1½" hose connector into the center port of the water pump. Ensure that the O-ring "A" is installed between the port and the connector.
- b) Remove the threaded ring (Collar) on the outer opening of the pump.
- c) Place O-ring "B" in the groove around the hair and lint strainer basket.
- d) Place the transparent hair & lint strainer cover in place and then screw the threaded ring (Collar) back on securely over the cover.
- e) Insert O-ring "C" (1¼") inside the outward facing opening of the transparent hair & lint strainer cover.
- f) Screw the 1¼"-1½" hose connector into the opening of the transparent hair & lint strainer cover.

3. Filter tank assembly

- a) Attach the filter tank to the base plate as shown (Figure 7). The feet on the bottom of the filter tank fit within the holes provided on the base plate.

- b) Screw the filter basket onto the Central Pipe (Figure 1). Fix the Central Pipe with Filter Basket onto the bottom of the filter tank. (Figure 2).

Filling tank with Cotton Tails which provided in the package. (Figure 3)

- c) Securing filter assembly (Figure 4)

Ensure the main tank seal around the top of the filter tank is in good condition and securely seated in the groove. Be sure groove is free of sand.

Carefully place the tank cover onto the filter tank. The tank cover should be oriented so that the notch on the cover is aligned with the matching tab on the filter tank - this ensures proper alignment.

Secure tank cover and filter tank with the tank cover lock ring assembly and tighten with the knob and bolt.

- d) Connecting the filter system and hooking up the hoses (Figures 8-11)

This pool filter system is designed to connect to pools with standard 1 1/4" or 1 1/2" diameter hose connectors.

If your pool has a hose connector size and/or type different than described here, you may need to purchase an adapter at your local pool supply store or hardware retailer.

Before you begin to connect hoses to the filter and pump, make certain that no water can flow through the intake or return hoses connected to the pool. Some pools have shut off valves in their intake and return ports, others do not. If you do not have a shut off valve, block the ports with a removable plug to prevent water from passing into and through the hoses.

Attach the hose coming from your pool's skimmer (outlet of pool) to the 1 1/4"-1 1/2" hose connector extending from the hair & lint strainer cover.

Secure with a hose clamp.

Lightly lubricate the pool return port on the tank cover with synthetic PTFE lubricant, available at any pool supply store or hardware store.

Attach the pool return hose (inlet of pool) to the pool return port on the tank cover.

NOTE: Be careful not to secure return hose to the waste/backwash port.
Secure with a hose clamp.

L. Filter system start up

1. Once the filter system has been properly assembled, the tank filled with Cotton Tails and the hoses connected as described above, you may begin with filtration.

Do not plug the system in until advised to do so below.

Make certain the pump is not plugged into a power supply.

Before operating the filter system, it is important to ensure that the filter system is positioned outside the pool and is lower than the pool's water level. The hose connections must also be correctly connected and fastened.

2. If you haven't done so already, fill your pool with water. Ensure that the water level is at least 1"-2" (2.5-5cm) above the top of the hose intake (Skimmer) and return ports in the pool.

The filter system is now vented. If applicable, open the vent screw (pressure gauge) on the upper side of the filter cover until the water flows out.

Release the shut off valve at the intake port (Skimmer) in the pool. If you plugged the intake port (Skimmer), remove the plug to allow the water to flow into the intake hose.

With the filter-pump system installed in a location level lower than your pool's water level - water will automatically flow into the pump-filter system.

Allow the filter tank to fill with water.

3. Check the filter system and the connection hoses for leaks and resolve, if necessary. Leakage points may possibly arise due to manufacturing tolerances, which need to be resolved by wrapping "Teflon" tape, available at any plumbing or hardware store, around the connections before the connection hose is attached.

Your filter system is now ready for use.

4. Cleaning Cotton Tails

Do not back wash on initial operation.

No need to back wash unless tank's pressure gauge reaches 25 psi.

We recommend removing Cotton Tails from filter tank at the end of the season, place in a mesh bag, wash in clothes washing machine, let dry and return to tank for next season.

5. Important note regarding Clarifiers.

Pool water clarifiers or other chemical additives that bond to particulate matter for the purpose of improved filtration must not be used if Cotton Tails is the filtration media for your pool. This is the same warning or instruction that is commonly given for pools where Diatomaceous Earth is the filtration media.

Like Diatomaceous Earth, Cotton Tails filters down to a very small particle size, 3 microns. Therefore, the addition of a clarifier will not improve the effectiveness of Cotton Tails. The clarifier or a similar chemical additive is likely to cause damage to the Cotton Tails resulting in significant reduction in the filtration capability. In addition, possible damage to the filtration tank or its internal components may occur.

Blue Wave will not be responsible for damage caused to the Cotton Tails, the filtration tank or any of the internal components of the filtration tank where a clarifier or other chemical additives that bond to particulate matter have been used in the pool.

6. Filtering time

The water in the pool should be circulated and filtered at least 4 to 5 hours 2 to 3 times in a 24 hour period, depending on the load and the size of the filter system. The time required is based on the performance of the

filter system and the size of the swimming pool. However, we recommend a minimum running time of 10 to 12 hours per day.

M. Manual Vacuuming the Pool

For Above Ground Pools

Vacuuming is done in normal filter mode. The pool vacuum is connected by use of a pool vacuum hose and vacuum plate directly into the skimmer. Do not turn on the pump until the pool vacuum is connected and ready for operation.

Important: The pool vacuum hose must be fully filled with water so that the pump does not lose prime and fill the tank with air.

N. Winterize the system in cold weather climates

For Above Ground Pools

- Unplug the pump from the power source.
- Close the shut off valves or block the flow of water at the pool inlet and return ports.
- Disconnect the filtration system from the pool, drain the tank and hoses.
- Store the filter system in a location protected from frost and severely cold temperatures. In a garage or insulated storage shed is recommended.

P. Important Do's & Don'ts

DO'S:

- Be aware and make note of the filter pressure when the Cotton Tails is clean. Remove and clean the Cotton Tails when you see the pressure increase to over 25 psi on the pressure gauge.
- Protect bottom filter basket while cleaning the Cotton Tails. Fill the tank with a few inches (about 1/8 of tank height) of water. While the Cotton Tails are being cleaned.
- Install and clean the cotton tails with the following instructions:
 - a. Open the cover of the filter tank.
 - b. Empty any residual matter from the filter and clean it thoroughly.
 - c. Fill the filter tank about 2/3 with cotton tails, 1.5 lbs(700g) cotton tails equal to 55 lbs(25kg) sand.
 - d. Close the filter and start filtering immediately.
 - e. Do not back wash on initial installation.
 - f. No need to back wash unless tank's pressure gauge reaches 25 PSI.
 - g. We recommend removing cotton tails from filter tank at end of the season, place in a mesh bag, wash in clothes washing machine, let dry and return to tank for next season.

DON'TS:

- Over clean the cotton tails. This filter media operates more efficiently during mid-cycle. Some level of debris in the cotton tails actually helps filtration and makes the filter more effective. Too much cleaning will reduce efficiency.
- Let filtration system run dry (without water)! Damage to the pump caused by dry running is NOT covered by the warranty.

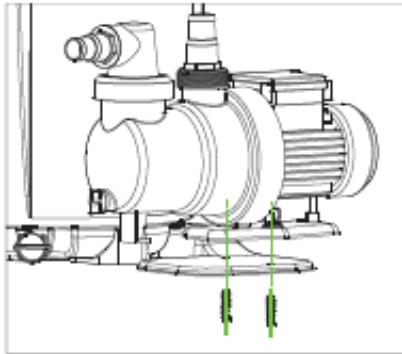
Q. FlowXtreme PLUS COTTON TAILS SYSTEM #NE4505 #NE4506

INSTALLATION FIGURES

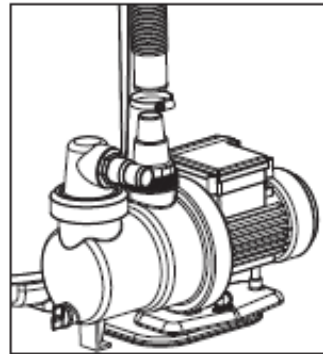
01



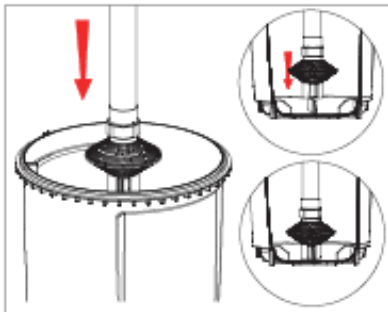
05



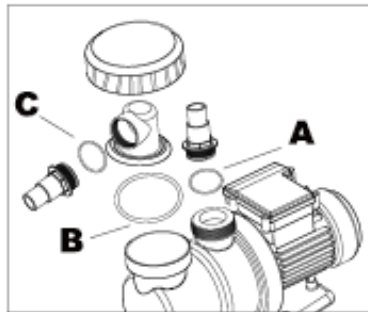
09



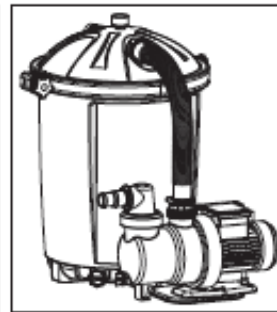
02



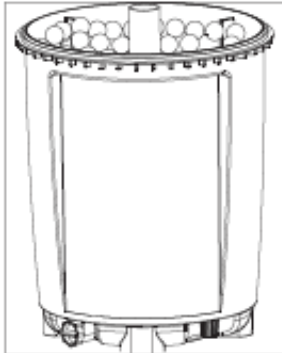
06



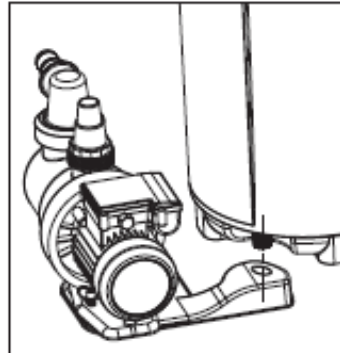
10



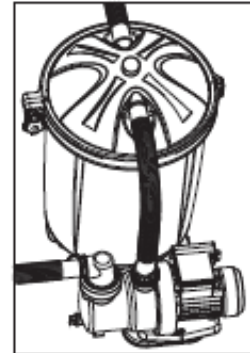
03



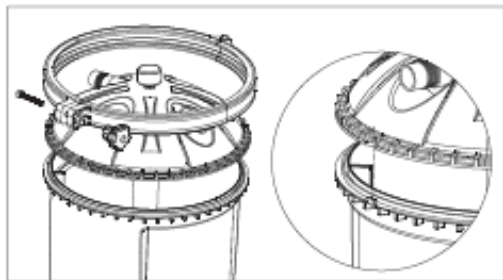
07



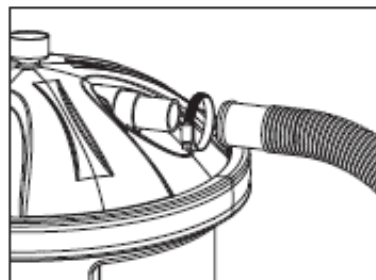
11



04



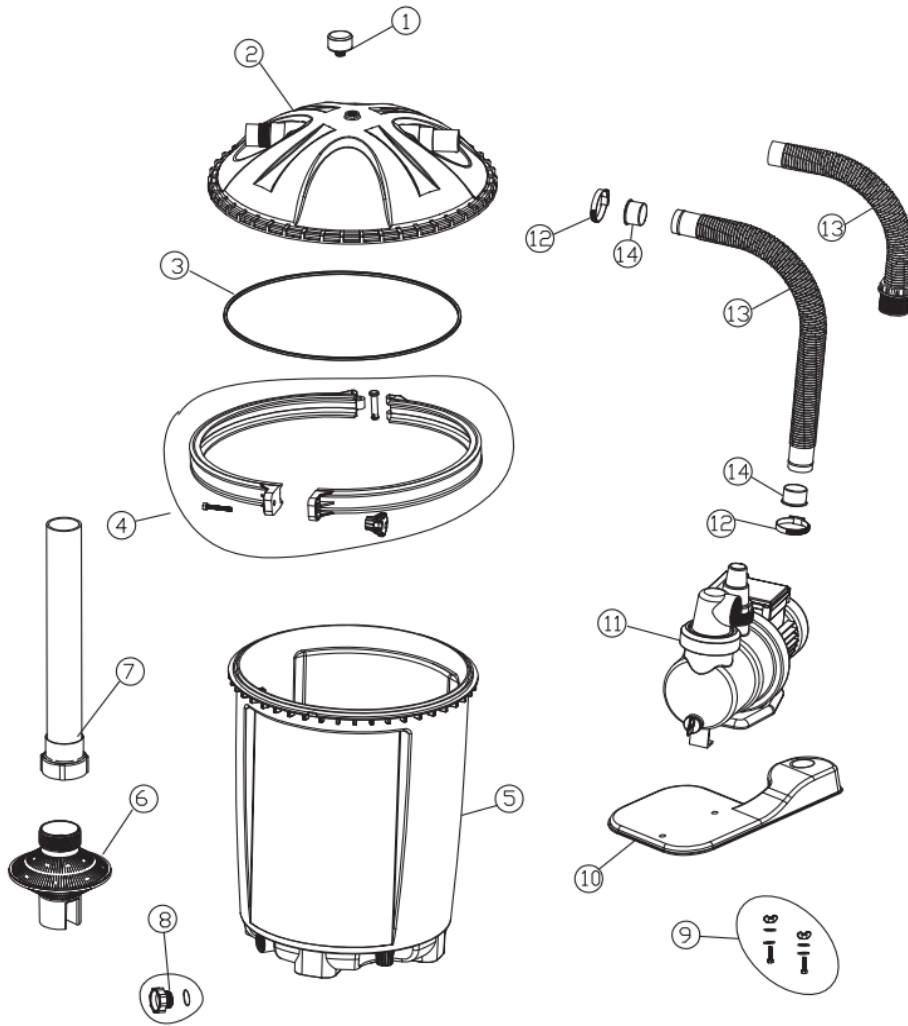
08



R. FlowXtreme PLUS COTTON TAILS SYSTEM NE4505 NE4506 PARTS

BREAKDOWN

Key	Part Name	Qty	Mfg. No.	B.W. No.	For Model#
1	PRESSURE GAUGE	1	17001	NEP4080	NE4505 & NE4506
	O-RING	1	17002	NEP4081	NE4505 & NE4506
2	FILTER COVER	1	17003	NEP4082	NE4505 & NE4506
3	O-RING	1	17004	NEP4083	NE4505 & NE4506
4	LEFT CLAMP RING	1	L00169	NEP4237	NE4505 & NE4506
	RIGHT CLAMP RING	1	L00170	NEP4238	NE4505 & NE4506
	CLAMP PIN	1	L00171	NEP4239	NE4505 & NE4506
	M8*80 BOLT	1	L00172	NEP4240	NE4505 & NE4506
	PLASTIC NUT	1	L00173	NEP4241	NE4505 & NE4506
5	FILTER TANK	1	1701025	NEP4122	NE4505
	FILTER TANK	1	1701050	NEP4123	NE4506
6	BASKET FILTER	1	17011	NEP4084	NE4505 & NE4506
7	HARD TUBE	1	17012	NEP4085	NE4505 & NE4506
8	DRAIN VALVE	1	17013	NEP4086	NE4505 & NE4506
	O-RING	1	17014	NEP4087	NE4505 & NE4506
9	Pump Bolt Wing Nut PUMP MOUNTING HARDWARE	2	P00175	NEP4261	NE4505 & NE4506
	Pump Bolt Flat Water PUMP MOUNTING HARDWARE	2	P00176	NEP4262	NE4505 & NE4506
	Pump Bolt Lock Washer PUMP MOUNTING HARDWARE	2	P00177	NEP4263	NE4505 & NE4506
	Pump Bolt Nut PUMP MOUNTING HARDWARE	2	P00178	NEP4264	NE4505 & NE4506
10	BASE PLATE	1	17019	NEP4088	NE4505 & NE4506
11	WATER PUMP 1/2HP	1	SPS1A450	NEP4269	NE4505
	WATER PUMP 3/4HP	1	SPS1A550	NE4523	NE4506
12	HOSE CLAMP	1	17021	NEP4089	NE4505
	HOSE CLAMP	2	17021	NEP4089	NE4506
13	SOFT HOSE	1	1702225	NEP4124	NE4505
	SOFT HOSE	1	1702250	NEP4125	NE4506
14	HOSE REDUCER	1	17023	NEP4090	NE4505
	HOSE REDUCER	2	17023	NEP4090	NE4506



S. TECHNICAL DATA for FlowXtreme Prime Single Speed Pumps

Model #s; NE4523, NEP4268, NEP4269

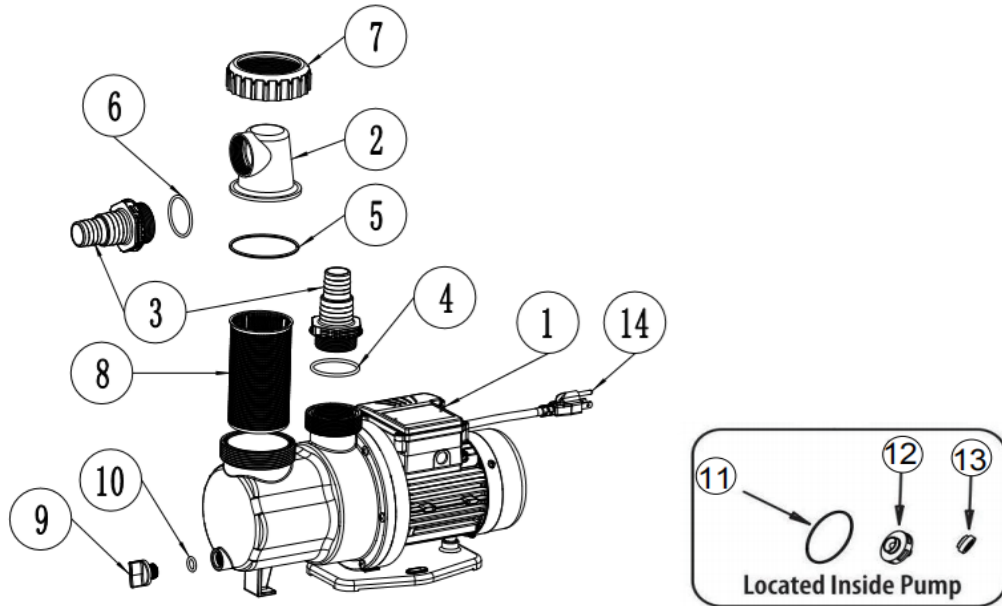
Technical Data

Model	HP	Voltage	Hertz	Amps	Flow Rate GPM
NE4523	0.75	115	60	5.5	38GPM
NEP4268	0.33	115	60	2.5	24GPM
NEP4269	0.50	115	60	4.5	35GPM

FlowXtreme PRIME, SPS1 Pumps Parts Breakdown & Diagram

Key	Part Name	Qty	Mnfg. No.	B.W. No.	For Model#
1	Water Pump/ Motor 250 W	1	SPS1A250	NEP4268	NEP4268
1	Water Pump/ Motor 450 W	1	SPS1A450	NEP4269	NEP4269
1	Water Pump/ Motor 550 W	1	SPS1A550	NE4523	NE4523

2	Transparent Hair & Lint Strainer Cover	1	P00131	NEP4245	NEP4268/NEP4269/NE4523
3	1 1/4"- 1 1/2" Hose Connector	2	P00132	NEP4246	NEP4268/NEP4269/NE4523
4	O-ring "A"- 2 1/4"	1	P00182	NEP4265	NEP4268/NEP4269/NE4523
5	O-ring "B"- 3"	1	P00183	NEP4266	NEP4268/NEP4269/NE4523
6	O-ring "C"- 1.5"	1	P00184	NEP4267	NEP4268/NEP4269/NE4523
7	Strainer Collar	1	P00133	NEP4247	NEP4268/NEP4269/NE4523
8	Strainer Basket	1	P00134	NEP4248	NEP4268/NEP4269/NE4523
9	Pump Drain Cap	1	P00135	NEP4249	NEP4268/NEP4269/NE4523
10	Drain Valve O-ring	1	P00136	NEP4250	NEP4268/NEP4269/NE4523
11	Motor Pump Seal - 250	1	P00137	NEP4251	NEP4268/NEP4269/NE4523
11	Motor Pump Seal - 450	1	P00138	NEP4252	NEP4268/NEP4269/NE4523
11	Motor Pump Seal - 550	1	P00138	NEP4252	NEP4268/NEP4269/NE4523
12	Impeller Assembly - 250	1	P001392	NEP4253	NEP4268
12	Impeller Assembly - 450	1	P001404	NEP4254	NEP4269
12	Impeller Assembly - 550	1	P001405	NEP20200	NE4523
13	Shaft Seal & Spring Assbly – 250	1	P00141	NEP4255	NEP4268/NEP4269/NE4523
13	Shaft Seal & Spring Assbly - 450	1	P00142	NEP4256	NEP4268/NEP4269/NE4523
13	Shaft Seal & Spring Assbly - 550	1	P00142	NEP4256	NEP4268/NEP4269/NE4523
14	Power Cord With 3 Prong Plug	1	P00143	NEP20201	NEP4268/NEP4269/NE4523



T. Troubleshooting for and FlowXtreme Prime Pumps

Motor Will NOT Start – Check For:

Make sure the terminal board connections agree with the wiring diagram on motor data plate label. Be sure motor is wired for available field supply voltage (see pump operating label).

1. Improper or loose wiring connections; open switches or relays; tripped circuit breakers, GFCI's, or blown fuses.

Solution: Check all connections, circuit breakers, and fuses. Reset tripped breakers or replace blown fuses.

2. Manually check rotation of motor shaft for free movement and lack of obstruction.
3. If you have a timer, be certain it is working properly. Bypass it if necessary.

Motor Shuts OFF – Check For:

1. Low voltage at motor or power drop (frequently caused by undersized wiring or extension cord use).

Solution: Contact qualified professional to check that the wiring gauge is heavy enough.

2. Motor may be overheating due to direct sunlight or low water level in the pump basket.

Solution: Check water flow to insure uniform amount of water coming to the pump.

NOTE - Your pump motor is equipped with an “automatic thermal overload protector.” The motor will automatically shut off if power supply drops before heat damage can build up causing windings to burn out. The “thermal overload protector” will allow the motor to automatically restart once the motor has cooled. It will continue to shut off until the problem is corrected. **Be sure to correct cause of overheating.**

Motor Hums, But Does NOT Start – Check For:

1. Impeller jammed with debris.

Solution: Have a qualified repair professional open the pump and remove the debris.

2. Motor is frozen either from months in the carton after manufacturing or from over winter storage.

Solution: Insert a flat bladed screw driver into the slot at the back end of the motor shaft and turn motor shaft until it moves freely. You may have to remove the protective metal cap from some models to access the motor shaft.

NOTE – All FlowXtreme Prime pumps are run tested with water before leaving the factory.

Pump Won't Prime - Check For:

1. Empty pump/strainer housing

Solution: Make sure pump/strainer housing is filled with water and cover o-ring is clean. Ensure o-ring is properly seated in the cover o-ring groove. Ensure o-ring is lubricated and that strainer cover is locked firmly in position. Lubricant will help to create a tighter seal.

2. Loose connections on suction side.

Solution: Tighten pipe/union connections or hose clamps on flexible hose.

NOTE - Any self-priming pump will not prime if there are suction air leaks. Leaks will result in bubbles emanating from return fittings on In Ground pool wall.

3. Leaking O-ring on valves.

Solution: Tighten, repair, or replace valves.

4. Strainer basket or skimmer basket loaded with debris.

Solution: Remove strainer housing cover or skimmer cover, clean basket, and refill strainer housing with water. Tighten cover.

Low Flow – Generally, Check For:

1. Clogged or restricted strainer or suction line.

Solution: Check for visible debris and remove if observed. If the problem continues contact a qualified repair professional.

2. Undersized pool plumbing.

Solution: Correct plumbing size.

3. Plugged or restricted discharge line of filter.

4. Air leak in suction (bubbles issuing from return fittings).

Solution: Re-tighten suction and discharge connections using Teflon tape. Inspect other plumbing connections and tighten as required.

5. Plugged, restricted, or damaged impeller.

Solution: Contact a qualified repair professional to install a new impeller & seal assembly.

Noisy Pump – Check For:

1. Air leak in suction piping, cavitation caused by restricted or undersized suction line or leak at any joint, low water level in pool, and unrestricted discharge return lines.

Solution: Correct suction condition or tighten fittings, if practical. Holding hand over return fitting will sometimes prove this point or putting in a smaller return eyeball fitting.

2. Vibration due to improper mounting, etc.

Solution: Mount the pump on a level surface and secure the pump to the equipment pad.

3. Foreign matter in pump housing. Loose stones/debris hitting impeller will cause noise.

Solution: With the pump turned off or disconnected from the power source clean the pump housing and inspect to remove any debris visible in the inner portion of the pump by the impeller.

4. Motor bearings noisy from normal wear, rust, overheating, or concentration of chemicals causing seal damage. This will allow chlorinated water to seep into bearings wiping out the grease resulting in rusting of the motor shaft and causing the bearing to whine.

Solution: All seal leaks must be replaced at once. Have a qualified pump repair specialist replace the motor shaft seals and inspect the motor shaft for possible damage. If the motor shaft is damaged replace the motor.

Water Leaks Around Intake and Discharge fittings – Check For

1. Lose hose fittings.

Solution: Tighten fittings or remove, apply Teflon tape and reinstall.

2. Lose hose clamps on flexible hose.

Solution: Tighten hose clamps using a nut driver or wrench instead of a screwdriver

3. Leaks that continue after trying the above solutions.

Solution: Inspect hose fittings for excess plastic mold flashing that can cause hoses and plumbing not to seal. If plastic mold flashing is found remove it with a fine tooth file or knife blade and re-assemble. If the fitting still will not seal replace them and reassemble plumbing with the new fittings.

ATTENTION

DO NOT RETURN THIS PRODUCT TO YOUR RETAILER. IF YOU ENCOUNTER ANY DIFFICULTIES WITH YOUR NEW SWIMMING POOL PUMP CONTACT BLUE WAVE CUSTOMER SERVICE FOR ASSISTANCE.

1-800-759-0977

U. Warranty Information

English

This product is warranted to the original purchaser to be free from defects in material or workmanship for a period of one (1) year from the date of the original retail purchase.

This warranty does not cover defects or damage due to improper installation, alteration, accident or any other event beyond the control of the manufacturer. Defects or damage resulting from misuse, abuse or negligence will void this warranty. This warranty does not cover scratching or damage that may result from normal usage.

This product is not intended for institutional or commercial use; the manufacturer does not assume any liability for such use. Institutional or commercial use will void this warranty.

This warranty is nontransferable and is expressly limited to the repair or replacement of the defective product. During the warranty period, the manufacturer shall repair or replace defective parts at no cost to the purchaser. Shipping charges and insurance are not covered and are the responsibility of the purchaser. Labor charges and related expenses for removal, installation or replacement of the product or components are not covered under this warranty.

The manufacturer reserves the right to make substitutions to warranty claims if parts are unavailable or obsolete.

The manufacturer shall not be liable for loss of use of the product or other consequential or incidental costs, expenses or damages incurred by the consumer of any other use. The user assumes all risk of injury resulting from the use of this product.

This warranty is expressly in lieu of all other warranties, expressed or implied, including warranties of merchantability or fitness for use to the extent permitted by Federal or state law. Neither the manufacturer nor any of its representatives assumes any other liability in connection with this product.

All warranty claims must include the retailer's information where the product was originally purchased. A purchase receipt or other proof of date of purchase will be required to process all warranty claims. The model number and part numbers found within the assembly instructions will be required when submitting any parts requests or warranty claims.

For further warranty information or inquiries, please call 1 (800) 759-0977 Or email warranty@splashnetexpress.com

**Blue Wave Products, Inc.
1745 Wallace Ave, Suite B
Saint Charles, IL 60174**

French

La garantie du produit est valide pour l'acheteur original en ce qui a trait aux pièces défectueuses ou à la main-d'œuvre pour une période de 1 année de la date d'achat.

Cette garantie n'est couverte pas les dommages causés par accident, par modification, par une installation défectueuse ou tout autre événement hors du contrôle du fabricant. Tout défaut ou dommage résultant de la négligence ou d'une mauvaise utilisation annule cette garantie. La présente garantie ne couvre pas les égratignures ou les dommages attribuables à un usage normal.

Ce produit n'est pas destiné à un usage institutionnel ou commercial; le fabricant décline toute responsabilité pour une telle utilisation. Un usage institutionnel ou commercial annule cette garantie.

Cette garantie est non transférable et est expressément limitée à la réparation ou au remplacement du produit défectueux. Au cours de la période de garantie, le fabricant s'engage à remplacer et à réparer les pièces défectueuses sans frais pour l'acheteur. Les frais d'assurance et d'expédition ne sont pas couverts et sont à la charge de l'acheteur. Les frais de main-d'œuvre et les dépenses liées au déplacement, à l'installation ou au remplacement du produit ou de ses composantes ne sont pas couverts par cette garantie.

Le fabricant se réserve le droit de faire des substitutions de recours en garantie si la pièce n'est pas disponible ou obsolète.

Le fabricant décline toute responsabilité liée à la perte d'utilisation ainsi que tous les autres coûts directs ou indirects, frais ou dommages encourus par le consommateur qui aurait été causés par une autre utilisation.

L'utilisateur assume tous les risques de dommage résultant de l'utilisation de ce produit.

Cette garantie tient lieu expressément de toute autre garantie, exprimée ou implicite, y compris les garanties de qualité marchande ou d'adaptation à un emploi particulier dans la mesure permise par les lois fédérales ou provinciales. Ni le fabricant, ni aucun de ses représentants n'assument aucune autre responsabilité en rapport avec ce produit.

Toute réclamation doit être faite par le détaillant où le produit a été acheté. Une facture ou autre preuve d'achat est nécessaire pour traiter toutes les réclamations de garantie. Le numéro de modèle et les numéros de référence figurant dans les instructions d'assemblage seront exigés lors de la soumission de demande de pièces ou de recours en garantie.

Pour plus d'information ou pour toute question, veuillez téléphoner au 1 (800) 759-0977 ou email warranty@splashnetxpress.com

**Blue Wave Products, Inc.
1745 Wallace Ave, Suite B
Saint Charles, IL 60174**