

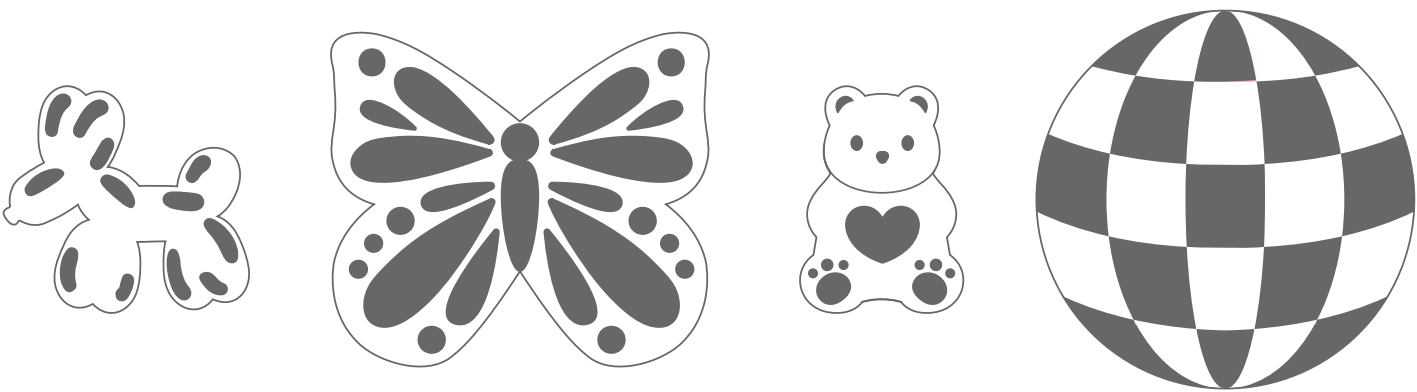
TRACING GUIDES

Use the alphabet guide to add letters or initials. Plan your design to ensure it's centered and fits. Place acrylic charm over letters and trace with the etching tool. Use guidelines to keep letters straight.



Use tracing guides below for detailed designs. Place acrylic charm over the guide and trace with etching tool.

PRO TIP: Rotate the paper for easier tracing.



Save your Etch-It tool and materials for future projects. Extra acrylic charms are available at craft stores or online. Ask a parent before etching other materials.

Etch-It Personalized Accessories
#6522000
© Faber-Castell USA, Inc.
Cleveland, Ohio 44131
www.fabercastell.com
Designed in the USA
Made in China

NEED HELP?
Call Toll-Free: 800-311-8684
email: consumer@fabercastell.com
Chat or view FAQs & INFO online:
creativityforkids.com

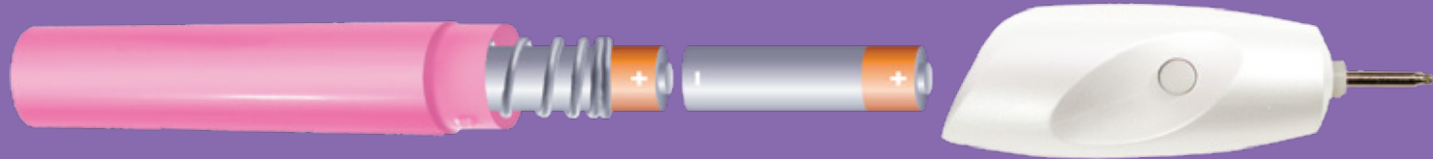


Read through all instructions before you begin

The tool requires 2 AA batteries (2 x 1.5v) (not included). Twist the top off. Place the batteries in the bottom half of the tool as marked on the barrel. Screw top back on.

BATTERY CAUTIONS:

- Use only Alkaline batteries.
- Non-rechargeable batteries are not to be recharged.
- Do not mix different types of batteries or new and used batteries.
- Only batteries of the same or equivalent type as recommended should be used.
- Batteries are to be inserted with the correct polarity.
- Exhausted batteries are to be removed from the toy.
- The supply terminals are not to be short-circuited.
- Instructions must be kept since they contain important information.



WARNING: The etching tool should only be used as directed with the components included in your kit. Do not place the etching tool on any part of your body, furniture or other items. Younger children may need help and adult supervision.

Hold the tool, as shown. Press and hold button to turn it on. Release button to turn it off automatically.

Practice on a small acrylic charm to try different pressure levels.

You do not need to press too hard; a light touch will create a cleaner etch.

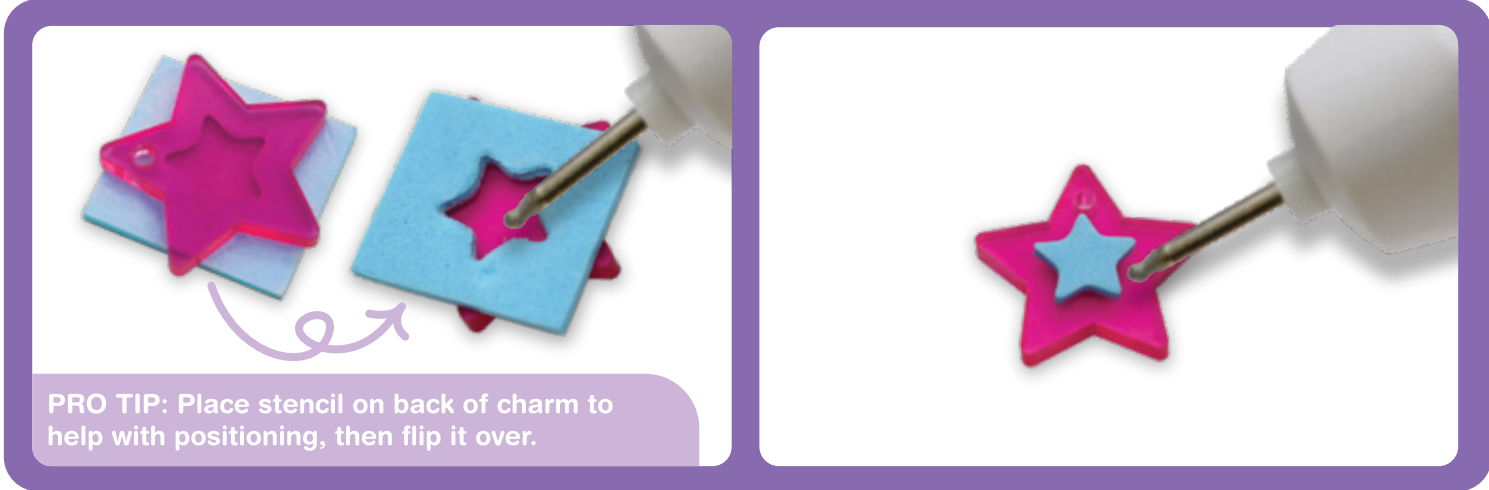
Choose an acrylic charm and review stencils and tracing guides to decide what to etch. Refer to instructions and pictures on packaging for inspiration.

Your etching will be permanent.



Use the stencils and letter guide, or create your own designs. The possibilities are endless!

USING THE STENCILS



PRO TIP: Place stencil on back of charm to help with positioning, then flip it over.

Position and stick stencil on top of acrylic charm. Outline design, then fill in middle.

Carefully remove stencil when done.

You can also use inner stencil shapes. Stick on your acrylic charm and etch around outer edges. Remove stencil when done.

Note – Normal wear and tear of stencils is expected when using the tool. Stencils are designed for single use.

TROUBLESHOOTING TIPS:

Etching looks rough: Press lightly on the acrylic charm while etching. Applying too much pressure can result in a rougher finish.

Blue dust on the etching tool: The foam stencil may create dust as you etch. Stop the tool and wipe away the dust using your hand or a paper towel.

Etching tool tip fell out: Simply push the tip back into place and continue using the tool.

On/Off button came off: Push the button back into place.

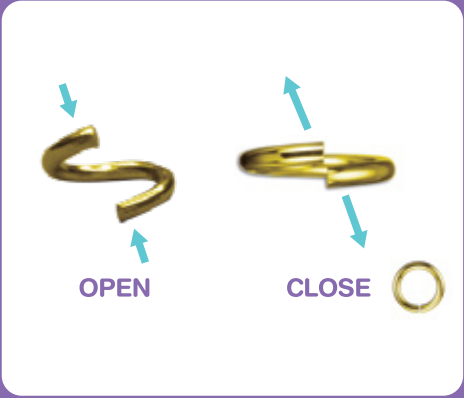
Tool isn't working when I press down on acrylic charm:

- Ensure you are using fresh batteries.
- Avoid pressing too hard, as this can slow the tool's power. Light pressure helps maintain battery life and ensures smooth operation.

CREATING ACCESSORIES

Note: You will need a pair of scissors. Plan out your designs before you begin.

KEYCHAIN RING:



Use the jump rings to attach acrylic charms. Open as shown.



Using a jump ring, add etched charms as shown.



Slide the larger beads onto the key ring as shown. Smaller beads can be used for other projects.

BACKPACK CLIPS:



Fold string in half and tie a loop knot through the backpack clip, as shown. Pull to secure.

Slide beads onto strings, using the bead threader if needed. Knot and trim ends.

Accent keychains with short chains. Attach with jump ring.

BRACELETS & NECKLACE:



Plan out your designs first.

We recommend using small acrylic charms on the bracelet.

Attach all charms using jump rings. Wear and share your custom jewelry!