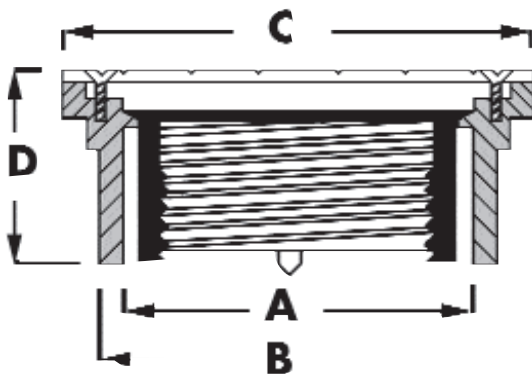
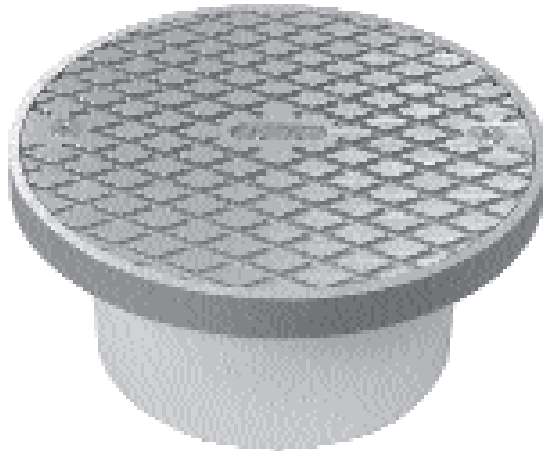


# SPECIFICATION SUBMITTAL SHEET

j o n e s   s t e p h e n s   c o r p o r a t i o n

## GENERAL PURPOSE CLEANOUTS AND ACCESS FITTINGS



### features and benefits:

- 3" x 4" fits over 3" or inside 4" Schedule 40 DWV pipe
- 4" fits over 4" Schedule 40 DWV pipe
- Cleanouts supplied with T Cone Test Plug installed
- Access fittings for use with internal pipe cleanout, order separately

This product and others like it can be found in the Jones Stephens catalog. Call today to order your catalog or download it from our website:  
[www.plumbest.com](http://www.plumbest.com)

PVC	ABS	A	B	C	D
<b>CLEANOUTS</b>					
<input type="checkbox"/> C60-162	<input type="checkbox"/> C60-163	Over 3"	Inside 4"	5 3/16"	2 1/2"
<input type="checkbox"/> C60-165	<input type="checkbox"/> C60-167	Over 3"	Inside 4"	5 3/16"	2 1/2"
<input type="checkbox"/> C60-160	<input type="checkbox"/> C60-161	Over 3"	Inside 4"	5 3/16"	2 1/2"
<input type="checkbox"/> C60-164	<input type="checkbox"/> C60-166	Over 4"	4"	6 1/8"	2 1/2"
<input type="checkbox"/> C60-142	<input type="checkbox"/> C60-143	Over 4"	4"	6 1/8"	2 1/2"
<input type="checkbox"/> C60-146	<input type="checkbox"/> C60-147	Over 4"	4"	6 1/8"	2 1/2"
<input type="checkbox"/> C60-140	<input type="checkbox"/> C60-141	Over 4"	4"	6 1/8"	2 1/2"
<input type="checkbox"/> C60-144	<input type="checkbox"/> C60-145	Over 4"	4"	6 1/8"	2 1/2"

jones stephens corporation  
3249 moody parkway • moody, alabama 35004  
toll free phone: 1-800-355-6637 • toll free fax: 1-800-462-6991  
[www.plumbest.com](http://www.plumbest.com)