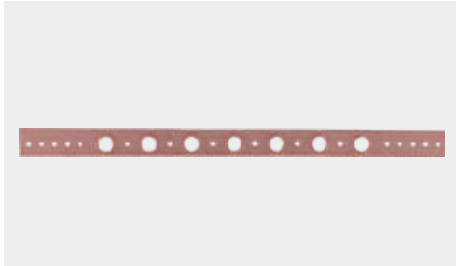


Brackets

100 Series Copper-Bonded Flat Bracket



- 5/8 in. holes on 2 in. centers
- Ideal for lavatory/sink or water closet

Part number	Size	Pipe size	Box qty
100-18	20 in.	1/2 in. CTS	
101-18	20 in.	1/2 in. CTS	50
101-26	26 in.	1/2 in. CTS	50
101-18-R	20 in.	1/2 in. CTS	25
101-26-R	26 in.	1/2 in., 3/4 in. CTS	25

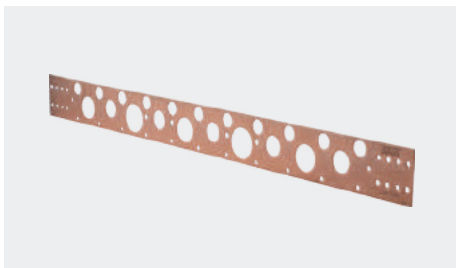
102 Series Copper-Bonded Flat Bracket



- Ideal for water heater and relief line applications

Part number	Size	Pipe size	Box qty
102-18	20 in.	3/4 in., 1 in. CTS	50
102-26	26 in.	3/4 in., 1 in. CTS	50

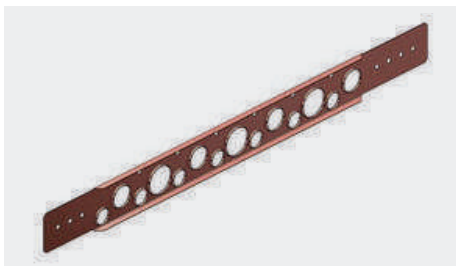
107 Series Copper-Bonded Flat Bracket



- Ideal for lavatory, toilet and water heater

Part number	Size	Pipe size	Box qty
107-26	26 in.	1/2 in., 3/4 in., 1 in., 1-1/4 in. CTS	50
107-18	20 in.	1/2 in., 3/4 in., 1 in. CTS	50

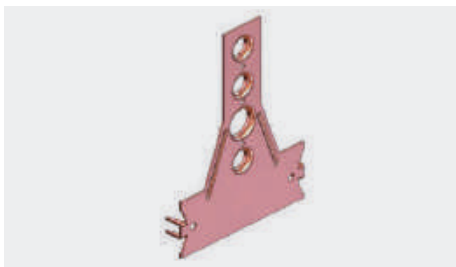
108 Series Copper-Bonded Flat Bracket



- Ideal for lavatory, toilet and water heater
- Rolled edges for extra strength and extruded holes for additional soldering surface

Part number	Size	Pipe size	Box qty
108-20	20 in.	1/2 in., 3/4 in., 1 in. CTS	50
108-26	26 in.	1/2 in., 3/4 in., 1 in. CTS	50

109 Series Copper-Bonded Bracket for Nail Plate and Toilet



- Supports 1/2" stub-outs at various heights from 2-1/4" – 6" or a 3/4" stub-out at 3-1/2" height
- Ideal for water closet applications and also functions as a nail plate

Part number	Size	Pipe size	Box qty
109-N-6	6-1/2 in.	1/2 in., 3/4 in. CTS	50