

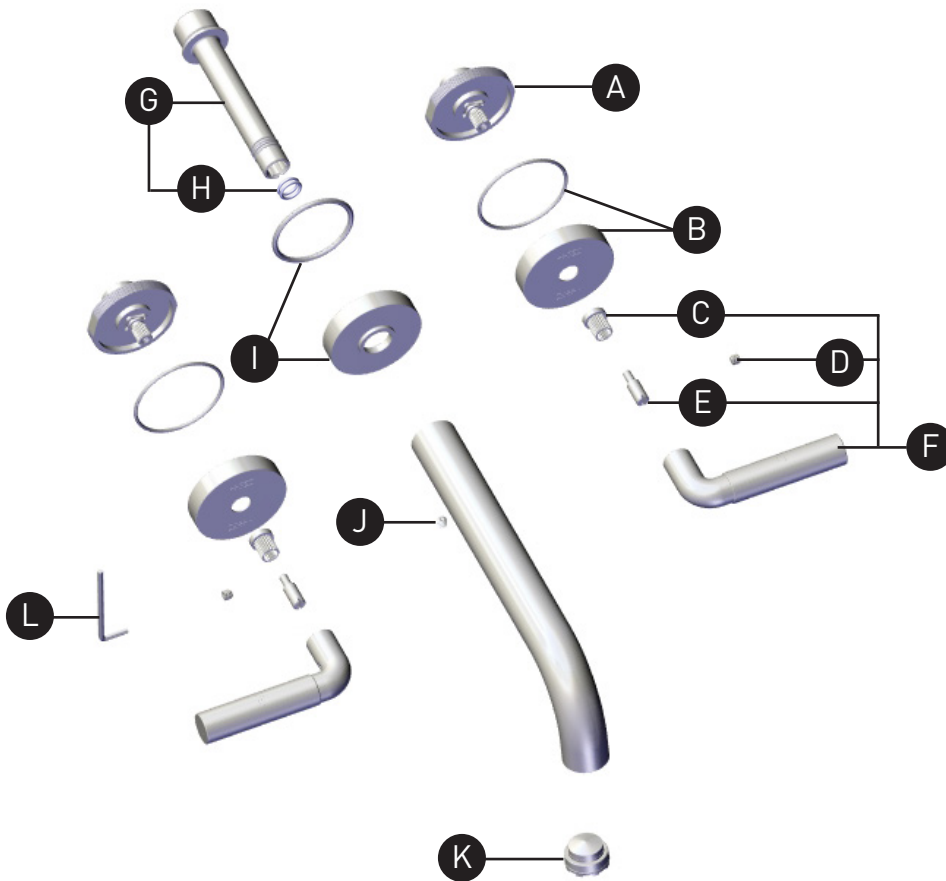
ORDER BY PART NUMBER

ILLUSTRATED PARTS

TRU03L

Wall Mount Lavatory Faucet Trim

| ID | Kit Number | Finish |
|----|--------------|-----------|
| A | 219825 (x2) | N/A |
| *B | 2268 (x2) | See below |
| *C | 306-266 (x2) | See below |
| D | 152-043 (x2) | N/A |
| E | 219826 (x2) | N/A |
| F | 219827 (x2) | N/A |
| G | 219828 | N/A |
| H | 219829 (x2) | N/A |
| *I | 219831 | See below |
| J | 152-040 | N/A |
| K | S6-554-12 | N/A |
| L | 505-025 | N/A |



| *Finish Determined by Suffix | |
|-------------------------------------|----------------------|
| <u>Finish</u> | <u>Description</u> |
| C | Chrome |
| BK | Black |
| BN | Brushed Nickel (PVD) |
| BG | Brushed Gold (PVD) |
| PN | Polished Nickel |

For warranty or additional information, contact:

U.S.A.
houseofrohl.com/support
1-800-777-9762

QUEBEC / MARITIMES / WESTERN CANADA
QUÉBEC / MARITIMES / OUEST CANADIEN
QUEBEC / MARITIMOS / CANADA OCCIDENTAL
houseofrohl.ca/support
1-866-473-8442

ONTARIO
houseofrohl.ca/support
1-800-287-5354

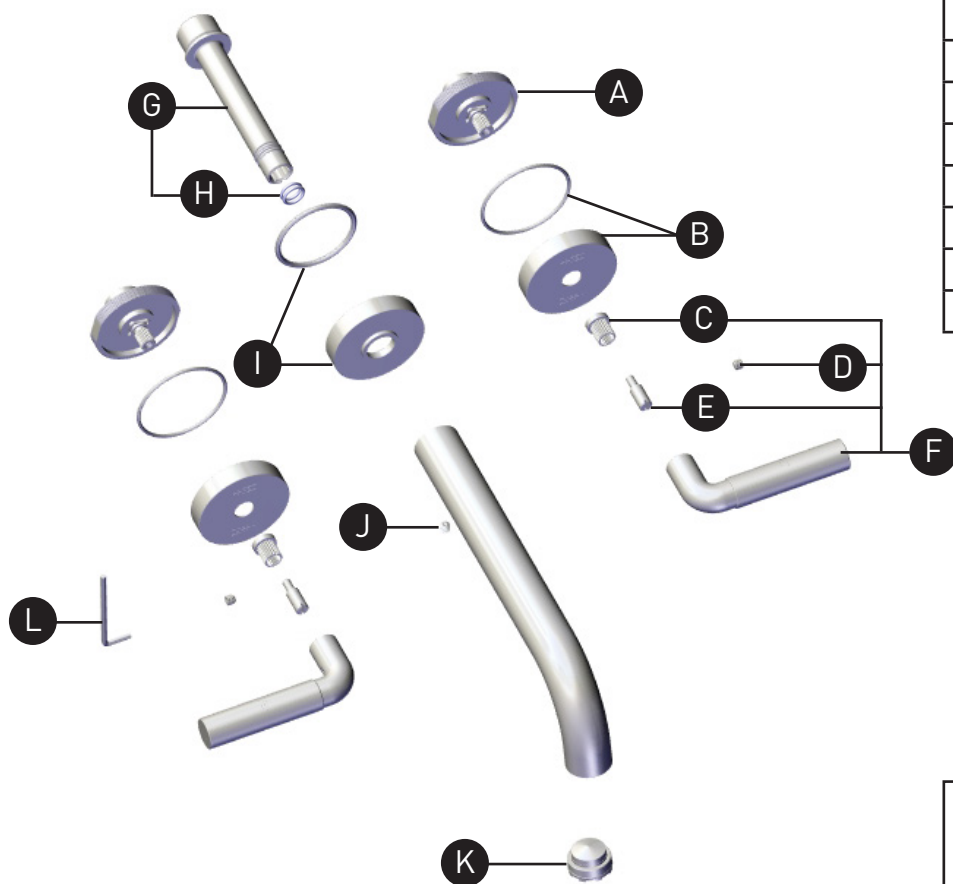
VEUILLEZ EFFECTUER VOTRE COMMANDE
PAR NO DE RÉFÉRENCE

ILLUSTRATIONS DES PIÈCES

TRU03L

Garniture de robinet de lavabo mural 8"

| ID | Référence du kit | Finition |
|----|------------------|-----------------|
| A | 219825 (x2) | N/A |
| *B | 2268 (x2) | Voir ci-dessous |
| *C | 306-266 (x2) | Voir ci-dessous |
| D | 152-043 (x2) | N/A |
| E | 219826 (x2) | N/A |
| F | 219827 (x2) | N/A |
| G | 219828 | N/A |
| H | 219829 (x2) | N/A |
| *I | 219831 | Voir ci-dessous |
| J | 152-040 | N/A |
| K | S6-554-12 | N/A |
| L | 505-025 | N/A |



*Finition déterminée par le Suffixe

| Finition | Description |
|----------|---------------------|
| C | Chrome poli |
| BK | Noir |
| BN | Nickel brossé (PVS) |
| BG | Or brossé (PVS) |
| PN | Nickel poli |

Si vous souhaitez obtenir de l'information supplémentaire à propos de la garantie ou de tout autre élément, communiquez avec :

U.S.A.
houseofrohl.com/support
1-800-777-9762

QUEBEC / MARITIMES / WESTERN CANADA
QUÉBEC / MARITIMES / OUEST CANADIEN
QUEBEC / MARITIMOS / CANADA OCCIDENTAL
houseofrohl.ca/support
1-866-473-8442

ONTARIO
houseofrohl.ca/support
1-800-287-5354

Riobel

PERRIN & ROWE
LONDON



victoria ⊕ albert®

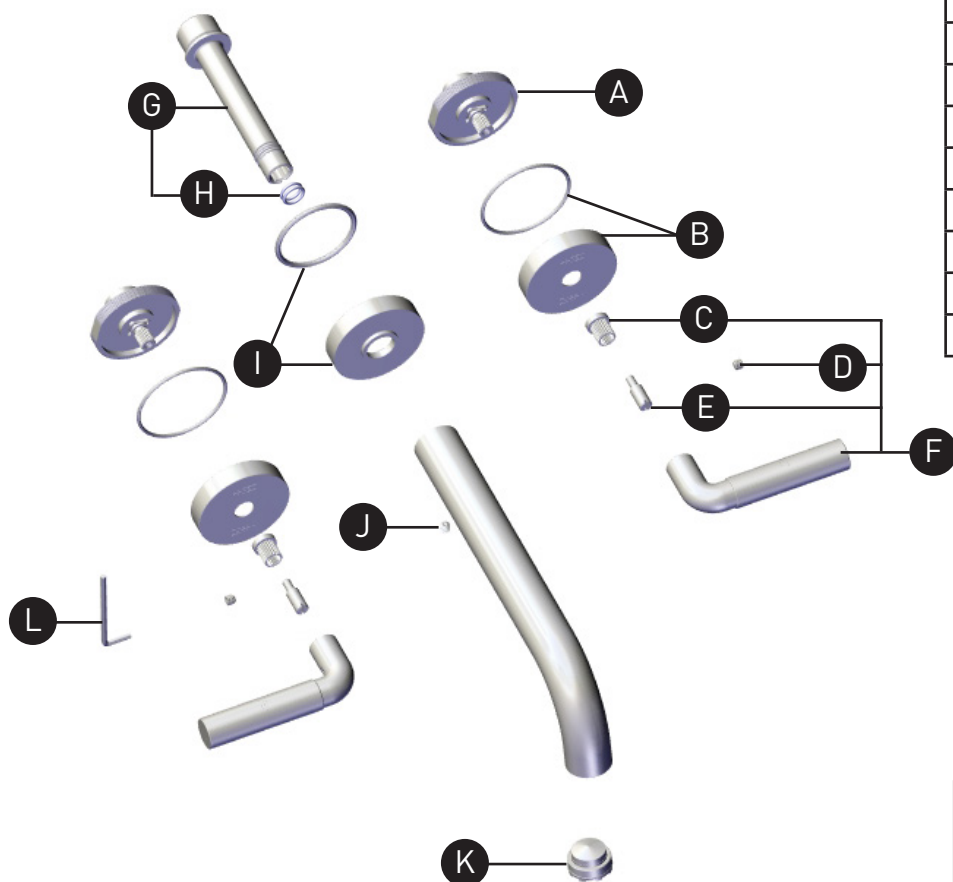
ROHL

PEDIR POR NÚMERO DE REFERENCIA

PIEZAS ILUSTRADAS

TRU03L

Acabado de grifería para lavabo empotrado



| ID | Referencia del kit | Acabado |
|----|--------------------|---------------|
| A | 219825 (x2) | N/A |
| *B | 2268 (x2) | Ver más abajo |
| *C | 306-266 (x2) | Ver más abajo |
| D | 152-043 (x2) | N/A |
| E | 219826 (x2) | N/A |
| F | 219827 (x2) | N/A |
| G | 219828 | N/A |
| H | 219829 (x2) | N/A |
| *I | 219831 | Ver más abajo |
| J | 152-040 | N/A |
| K | S6-554-12 | N/A |
| L | 505-025 | N/A |

*Acabado determinado por el sufijo

| Acabado | Descripción |
|---------|------------------------|
| C | Cromado brillante |
| BK | Negro |
| BN | Níquel cepillado (PVD) |
| BG | Oro cepillado (PVD) |
| PN | Níquel pulido |

Para preguntas sobre la garantía o para obtener más información, favor de comunicarse con:

U.S.A.
houseofrohl.com/support
1-800-777-9762

QUEBEC / MARITIMES / WESTERN CANADA
QUÉBEC / MARITIMES / OUEST CANADIEN
QUEBEC / MARITIMOS / CANADA OCCIDENTAL
houseofrohl.ca/support
1-866-473-8442

ONTARIO
houseofrohl.ca/support
1-800-287-5354

Riobel

PERRIN & ROWE
LONDON



victoria ⊕ albert®

ROHL