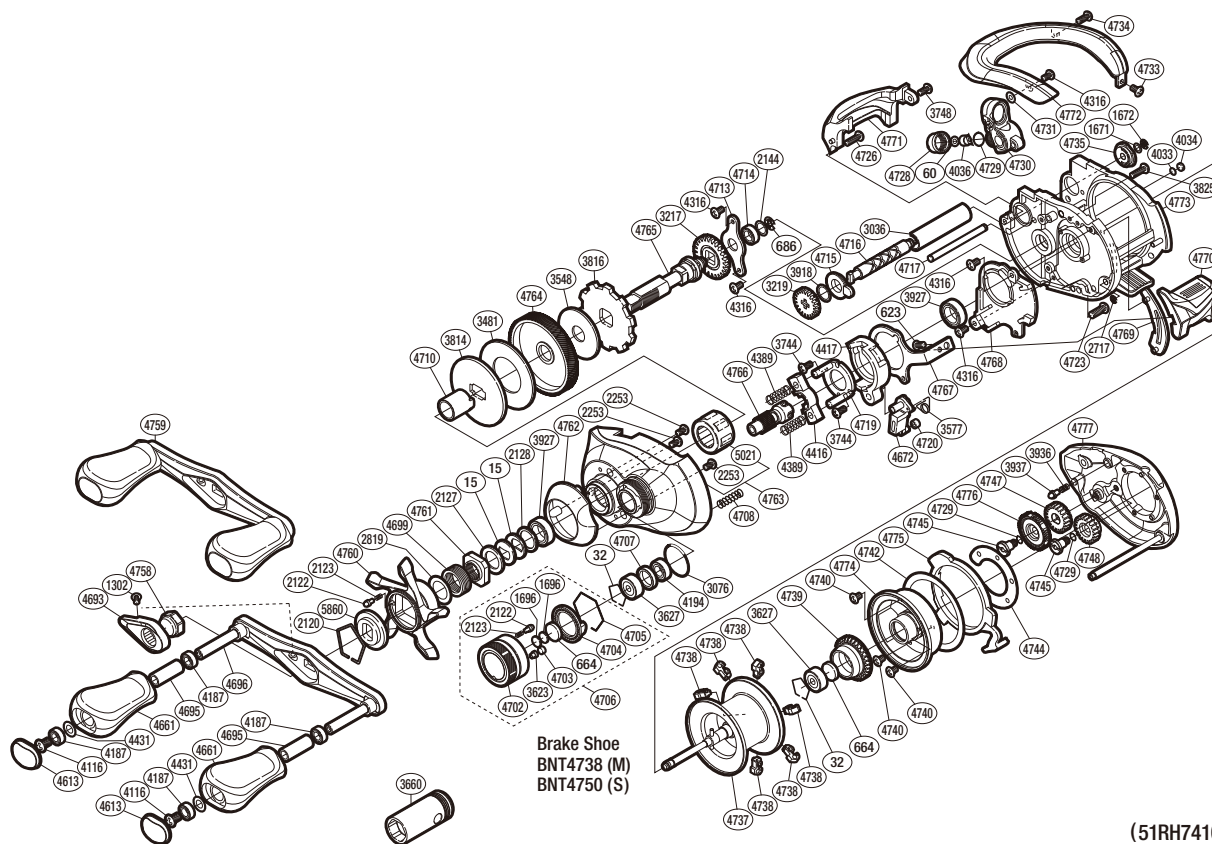


SHIMANO

ANTARES

ANT-L



(51RH741000U)

#	Part No.	Description	#	Part No.	Description	#	Part No.	Description
15	10D60	Drag Spring Washer	4034	108Q2	Anti-Thrust Washer	4733	10LVD	Screw
32	10GEW	Bearing Retainer	4036	10FFW	Line Guide Pawl	4734	10LVL	Screw
60	10CFW	Spacer	4116	103E9	Screw	4735	104SR	Worm Bushing B
623	103C0	Screw	4187	104VX	Ball Bearing	4737	10L7Q	Spool Assembly
664	1057S	Spacer B	4194	105BP	Ball Bearing	4738	1046M	Brake Shoe M
686	105NK	E Lock	4316	10MT2	Screw	4739	10EXU	Brake Ring Gear
1302	103N8	Screw	4389	104BU	Yoke Spring	4740	10LVA	Screw
1671	10BH8	Washer	4416	10471	Yoke	4742	104N6	Washer
1672	105NC	E Lock	4417	10KSC	Clutch Cam	4744	108F1	Brake Case Washer
1696	10896	Cast Control Spacer	4431	10G8G	Washer	4745	10A6M	Screw
2120	10KXV	Click Plate Retainer	4613	10AVV	Handle Knob Seal	4747	10BGN	Br Dial Gear
2122	10BT0	Click Pin	4661	1032A	Handle Knob	4748	10CLG	Idle Gear
2123	10BT2	Click Spring	4672	105ZV	Clutch Pawl	4758	10FFJ	Handle Nut
2127	10J1N	Star Drag Spacer	4693	10Q5W	Handle Nut Plate	4759	10CFH	Handle Assembly
2128	105PW	Bearing Washer	4695	109VL	Handle Knob Pipe	4760	10AXA	Star Drag
2144	10C47	Washer	4696	109VE	Handle Shank Assembly	4761	10A0C	Star Drag Nut
2253	103N4	Screw	4699	10A71	Star Drag Spring	4762	10K0B	Clutch Button Attachment
2717	105NB	E Lock	4702	10KFU	Cast Control Cap	4763	10J38	Left Side Plate
2819	10HHN	Washer	4703	10C5Z	Retainer Sheet	4764	10CR9	Drive Gear
3036	10NJH	Level Wind Guard	4704	10L2F	Cast Control Click Plate	4765	105CY	Drive Shaft
3076	108W8	O Ring	4705	10L6Y	Cast Control Click Holder	4766	10CU6	Pinion Gear
3217	10J77	Idle Gear	4706	10HWE	Cast Control Cap Assembly	4767	10QLQ	Clutch Plate
3219	10FP4	Idle Gear	4707	10EYU	Bearing Spacer	4768	10BVY	Clutch Guard
3481	10LN7	Drag Washer	4708	10KNE	Damper Spring	4769	1099C	Clutch Bar Guide B
3548	10CHZ	Drag Washer	4710	10BN1	Roller Clutch Inner Tube	4770	10MXX	Quick-Fire II Clutch Bar
3577	10N1V	Clutch Pawl Spring	4713	109T5	Drive Shaft Retainer	4771	10QH2	Level Wind Protector
3623	10CCX	Cast Control Cap Retainer	4714	104JZ	Ball Bearing	4772	104N8	Thumb Rest
3627	105C0	Ball Bearing	4715	10NCZ	Worm Bushing A	4773	10JNS	One-Piece Frame
3744	10LVH	Screw	4716	104ZN	Worm Shaft	4774	10FXV	Brake Case
3748	10MPR	Screw	4717	10QSL	Stabilizer Bar	4775	10BBX	Side Plate Cam Lever
3814	10D3M	Key Washer	4719	10F43	Clutch Cam Retainer	4776	10B22	Br Dial
3816	10D77	Anti-Reverse Ratchet	4720	1048C	Clutch Pawl Bushing	4777	10HU5	Right Side Plate
3825	10LUY	Screw	4723	103CG	Screw	5021	10F33	Roller Clutch Bearing
3918	10G84	Washer	4726	10MT8	Screw	5860	10J26	Star Drag Click
3927	10EX8	Ball Bearing	4728	10FJD	Pawl Cap			
3936	10B51	Click Spring	4729	108WQ	O Ring	3660	10MDK	Reel Wrench (Accessory)
3937	10B4Z	Click Pin	4730	10NYQ	Line Guide	4692	10LQ0	B-100 Oil (Accessory)
4033	108SK	Washer	4731	10CFV	Spacer	4750	1046N	Brake Shoe S (Accessory)

Please note that the number of adjusting washers may not be the same as shown in the exploded views.
(Adjustment will vary with each individual product.)

(241120)_004