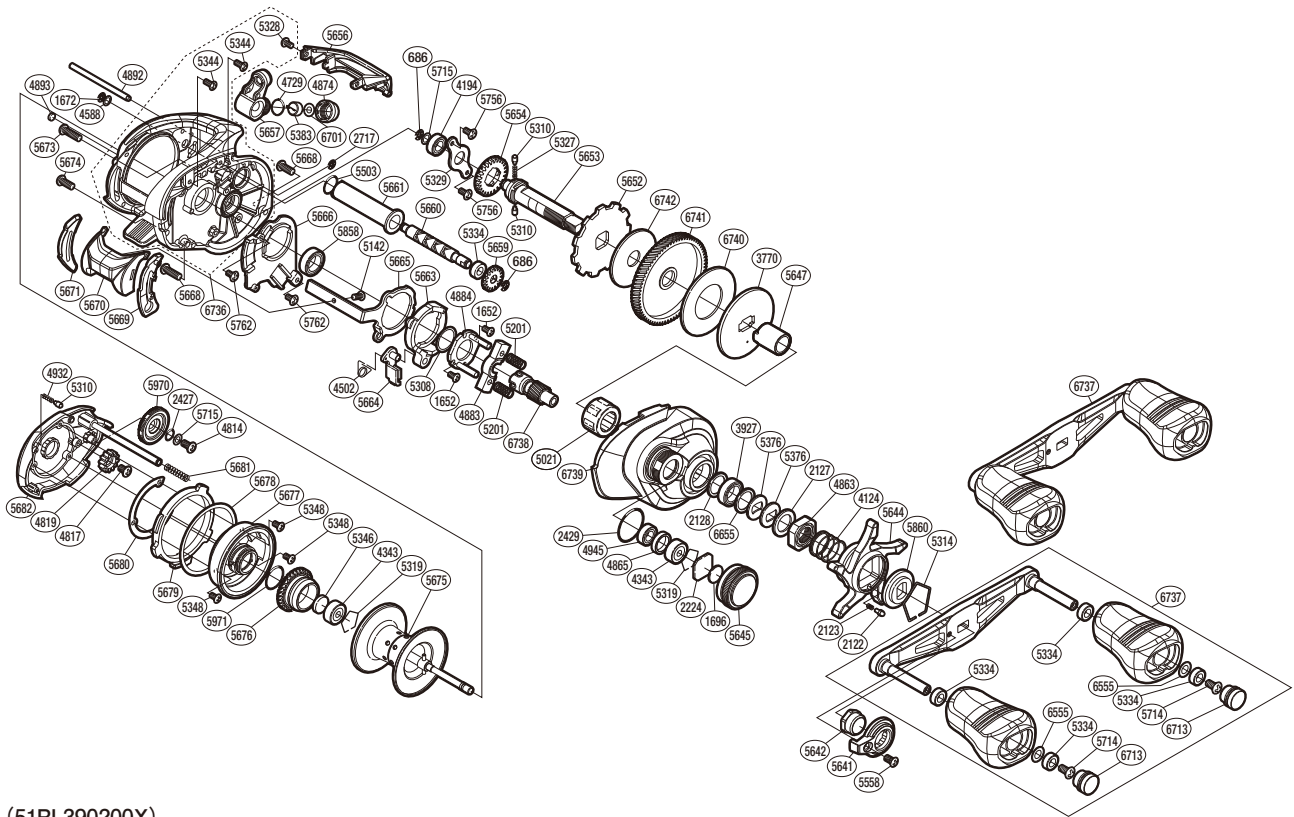


# SHIMANO

## CURADO

## CU200PGK



(51RL390200X)

#	Part No.	Description	#	Part No.	Description	#	Part No.	Description
686	105NK	E Lock	5201	104BC	Yoke Spring	5669	10SG5	Clutch Bar Guide B
1652	10LVE	Screw	5308	10190	Washer	5670	101DT	Clutch Button Assembly
1672	105NC	E Lock	5310	10HJG	Idle Gear Pin	5671	10SRK	Clutch Bar Guide A
1696	10896	Cast Control Spacer (B)	5314	10KXW	Click Plate Retainer	5673	10LHY	Screw
2122	10BT0	Click Pin	5319	1054D	Bearing Retainer	5674	10SXA	Screw
2123	10BT2	Click Spring	5327	10JDY	Idle Gear Spring	5675	101DZ	Spool Assembly
2127	10J1N	Star Drag Spacer	5328	10LCQ	Screw	5676	101DR	Brake Ring Gear Assembly
2128	105PW	Washer	5329	109T1	Drive Shaft Retainer	5677	10DSB	Brake Case Assembly
2224	1085F	Spool Tension Spacer (A)	5334	10PXZ	Bushing	5678	104N0	Washer
2427	108WS	O Ring	5344	10MPD	Screw	5679	10SG6	Left Side Plate Cam Lever
2429	108WK	O Ring	5346	10EX5	Spacer B	5680	10SSN	Washer
2717	105NB	E Lock	5348	10L1Q	Screw	5681	10KNH	Spring
3770	109EY	Key Washer	5376	109F5	Drag Spring Washer	5682	101DS	Left Side Plate Assembly
3927	10EX8	Ball Bearing	5383	10BHQ	Line Guide Pawl	5714	10LFA	Screw
4124	10A70	Star Drag Spring	5503	101GT	O Ring	5715	10G6D	Drive Shaft Washer
4194	105BP	Ball Bearing	5558	10R1Q	Screw	5756	10S3Y	Screw
4343	105C3	Ball Bearing	5641	10SSK	Handle Nut Plate	5762	10S5T	Screw
4502	104CN	Clutch Pawl Spring	5642	10SSU	Handle Nut	5858	105BT	Ball Bearing
4588	10FJZ	Washer	5644	10SS8	Star Drag	5860	10J26	Star Drag Click Plate
4729	108WQ	O Ring	5645	10SRP	Cast Control Cap	5970	10SAZ	Brake Dial
4814	103LE	Screw	5647	10SRM	Roller Clutch Inner Tube	5971	100GW	O Ring
4817	103L7	Screw	5652	10SSJ	Anti-Reverse Ratchet	6555	104FH	Washer
4819	10CLF	Idle Gear	5653	10SG7	Drive Shaft	6655	100SE	Washer
4863	10A3T	Star Drag Nut	5654	101K8	Idle Gear	6701	10CFU	Spacer
4865	10EYS	Bearing Spacer	5656	10SSH	Level Wind Protector	6713	10E4R	Handle Knob Seal
4874	10FJB	Pawl Cap	5657	101E0	Line Guide Assembly	6736	10TCY	Frame Assembly
4883	1046V	Yoke	5659	10SRL	Idle Gear	6737	10TCW	Handle Assembly
4884	10F3X	Clutch Cam Retainer	5660	10ST0	Worm Shaft	6738	101UJ	Pinion Gear
4892	10QSE	Stabilizer Bar	5661	10SSP	Level Wind Guard	6739	101HJ	Right Side Plate
4893	108PY	Washer	5663	10SG1	Clutch Cam	6740	10SE0	Drag Washer
4932	10GQZ	Click Spring	5664	101M5	Clutch Pawl Assembly	6741	101U1	Drive Gear
4945	105BR	Ball Bearing	5665	10SSV	Clutch Plate	6742	10DQK	Drag Washer
5021	10F33	Roller Clutch Bearing	5666	10SST	Clutch Guard			
5142	10559	Screw	5668	10SXB	Screw			

Please note that the number of adjusting washers may not be the same as shown in the exploded views.  
(Adjustment will vary with each individual product.)

(230906)\_005