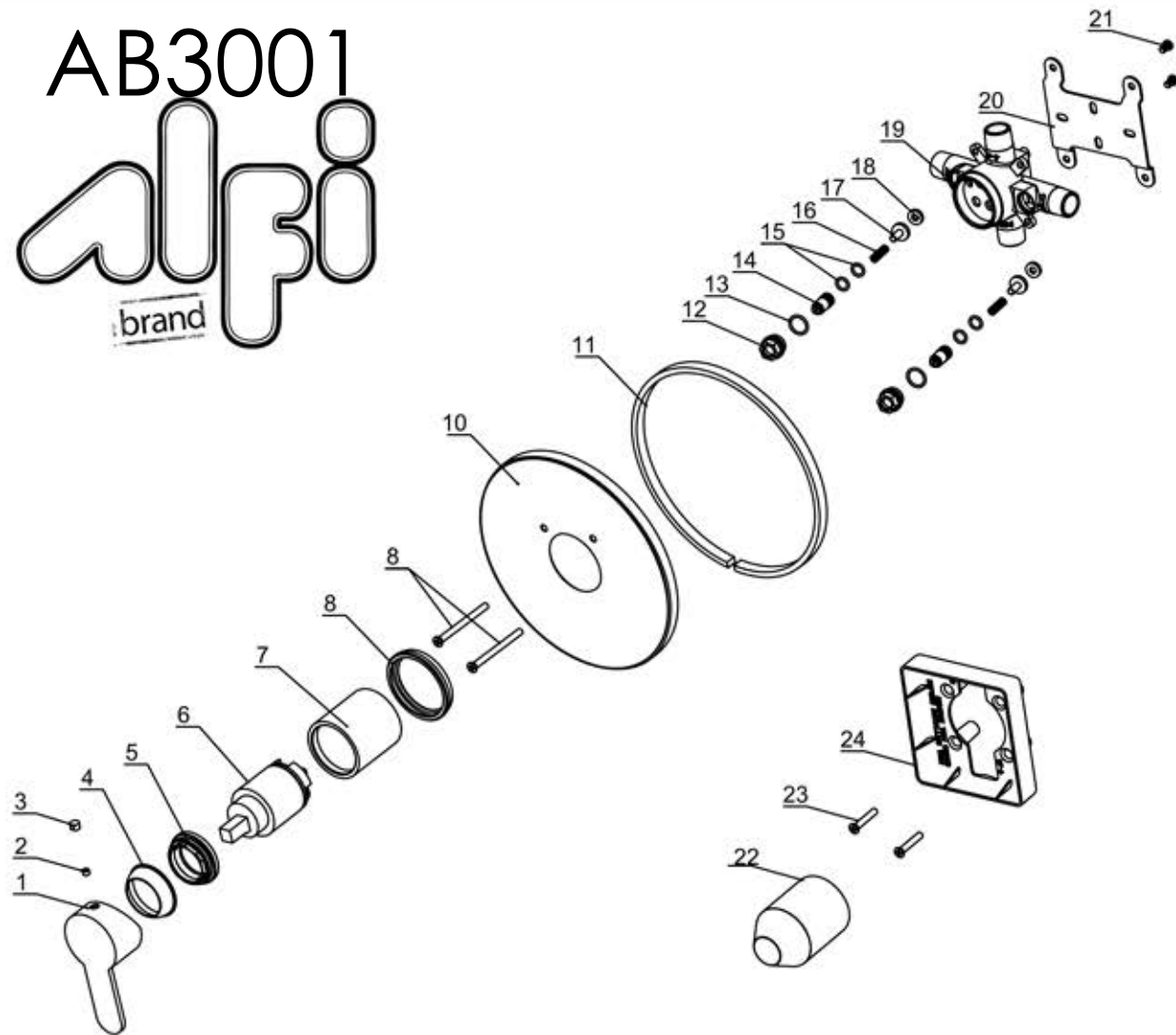


# AB3001

alpi brand



24	100200560 installation template	ABS	1	50020062930
23	M5*30 screw	Stainless steel	2	50060008300
22	2203 plastic guard	PE	1	70030023529
21	M5*8 screw	Stainlsss steel	2	50060009500
20	100200560 fixing seat	Q235	1	50020062601
19	100200790 mainbody	H59	1	10020098452
18	72188 washer	NBR	2	70020018830
17	2075 connector	H59	2	40060016252
16	2075 spring (0.4)	Stainless steel	2	50060024900
15	8*1.8"O"ring	NBR	4	70010000530
14	2075 cartridge	H59	2	40060016052
13	13.2*1.8"O"ring	NBR	2	70010004830
12	100200560 seat	H59	2	40060101152
11	Sponge seal (8*10)	Sponge	0.54m	70030038931
10	51653 plate	SUS304	1	50010065301
9	M5*80 screw	Stainless steel	2	50060028400
8	1233 rubber joint	Rubber	1	70030003730
7	2563 cover	H59	1	40060076901
6	40H back to back pressure balanced valve	Assembly	1	20060005900
5	2383 cartridge nut	H59	1	40060073552
4	2325 decorative cover	ABS	1	50010078101
3	2508 chrome button	ABS	1	50010031101
2	M5*4 screw	Stainless steel	1	50060012000
1	100200544 handle	Zinc alloy	1	20010017201
No.	Description&specification	Material	Qty	Item no.