



# UNDERCABINET LIGHTING

SOLO-TASK LED  
12VAC, 3000K LED ARRAY

**USTL1, USTLR1, UK3STL**

Project: \_\_\_\_\_

Fixture Type: \_\_\_\_\_

Location: \_\_\_\_\_

Contact/Phone: \_\_\_\_\_

## PRODUCT DESCRIPTION

The Solo-Task LED luminaire offers ultimate flexibility and efficiency for task and accent lighting. The diminutive size allows it to be used easily and unobtrusively in applications where lighting of both superior efficacy and quality is desired. Solo-Task LED luminaires approximate light levels of 25-watt halogen and xenon sources while using less than  $\frac{1}{5}$  of the energy, and generates significantly less heat. The ability to use multiple Solo-Task LED luminaires together in a daisy-chain method makes installation simple and straightforward. Solo-Task LED luminaires are designed for maintenance free operation for 50,000 hours and can be ordered in surface mount or recessed mount configuration. A convenient all-in-one surface mount kit is also available.

## ENVIRONMENTALLY FRIENDLY, ENERGY EFFICIENT

- No harmful ultraviolet or infrared wavelengths
- No lead or mercury

## PRODUCT SPECIFICATIONS

**LED** 3000K white phosphor array provides outstanding performance, color quality/consistency and reliability • 80 CRI minimum.

**Housing** Quality die-cast aluminum • Daisy-chain capable utilizing screw-type terminal blocks • Accepts 14AWG through 18AWG wire • Designer white, black, brushed bronze or satin nickel finishes • Available as surface mount or recessed mount fixture.

**Life** Rated at 50,000 hours at 70% lumen maintenance.

**Lens** High transmission diffusing lens produces smooth, uniform aperture luminance.

**LED Drivers/Transformers** Onboard luminaire LED driver operates at less than 5-watts input at 12-volts AC • Requires Class 2, 120-volt to 12-volt AC electronic (remote or plug-in) or magnetic (remote) driver/transformer for operation • Juno's [TL602E](#) and TL548 LED electronic drivers/transformers, and [MAGXFMR](#) magnetic driver/transformer are designed specifically for use with these luminaires.

**Dimming** May be dimmed with dimmers tested and qualified by Juno for use with [TL602E](#) and [MAGXFMR](#) • Refer to driver/transformer specifications for compatible dimmers • Color temperature remains constant over dimming range

**Labels** UL Listed for indoor damp locations • UL and cUL Listed • Union made • RoHS compliant.

**Warranty** Warranty period is 5-years from date of purchase • Standard Juno Lighting Group product guarantee terms and conditions apply • Continuously operating these luminaires above 12VAC will void the warranty.

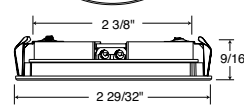
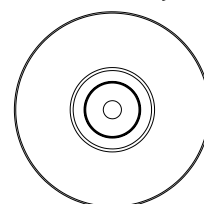
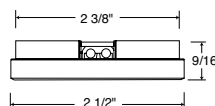
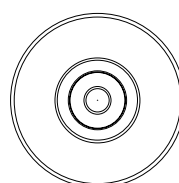
Specifications subject to change without notice.



## DIMENSIONS

Surface Mount (USTL1)

Recessed Mount (USTLR1)



2-3/4" cutout

## ELECTRICAL DATA

	USTL1/USTLR1	UK3STL
No. of Fixtures	1	3
Input voltage	12VAC	120VAC
Total input power (watts)	3.8*	12.4
Total input current	0.37*	0.13
Lumens	286	872
Efficacy (lumens/watt)	74.5	70.3

\*Solo-Task input power. Additional losses vary depending on transformer and system loading.

## ORDERING INFORMATION (Type fixture options in the blank form fields below)

Example: USTL1 30K 80CRI BL

Series		CCT	Minimum CRI	Finish
<b>USTL1</b>	Solo-Task 12VAC LED Array Fixture, Surface Mount	<b>30K</b> 3000K	<b>80CRI</b> 80 CRI	<b>BL</b> Black
<b>USTLR1</b>	Solo-Task 12VAC LED Array Fixture, Recessed Mount			<b>BRZ</b> Bronze
<b>UK3STL</b>	Solo-Task 12VAC LED Array Fixture, Surface Mount Kit, 3 fixtures			<b>SN</b> Satin Nickel
				<b>WH</b> White

# UNDERCABINET LIGHTING

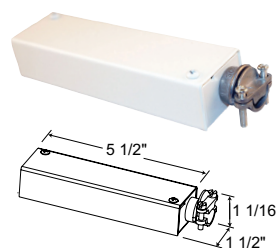
SOLO-TASK LED  
1 2VAC, 3000K LED ARRAY  
**USTL1, USTLR1, UK3STL**

## ACCESSORIES

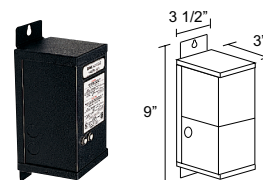
Catalog Numbers	Description
<b>UST18G 10FT BL</b>	Solo-Task 18AWG 2-Conductor Wire, 10', Black
<b>UST18G 10FT WH</b>	Solo-Task 18AWG 2-Conductor Wire, 10', White
<b>UST18G 25FT BL</b>	Solo-Task 18AWG 2-Conductor Wire, 25', Black
<b>UST18G 25FT WH</b>	Solo-Task 18AWG 2-Conductor Wire, 25', White
<b>USTREC BL</b>	Solo-Task Recessed Conversion Kit, Black
<b>USTREC BRZ</b>	Solo-Task Recessed Conversion Kit, Bronze
<b>USTREC SN</b>	Solo-Task Recessed Conversion Kit, Satin Nickel
<b>USTREC WH</b>	Solo-Task Recessed Conversion Kit, White

## TRANSFORMERS

Catalog Numbers	Description
<b>TL602E 10W 120 12AC 6CP WH</b>	LED-Compatible Electronic Driver/Transformer, 10W Maximum Rating, 120 Volt, 12V AC, 6FT Cord & Plug, White
<b>TL602E 25W 120 12AC 6CP WH</b>	LED-Compatible Electronic Driver/Transformer, 25W Maximum Rating, 120 Volt, 12V AC, 6FT Cord & Plug, White
<b>TL602E 60W 120 12AC 6CP WH</b>	LED-Compatible Electronic Driver/Transformer, 60W Maximum Rating, 120 Volt, 12V AC, 6FT Cord & Plug, White
<b>MAGXFMR 1C 10W 120 12AC BL</b>	Magnetic Transformer, 10W Maximum Rating, 120 Volt, 12V AC, Black
<b>MAGXFMR 1C 25W 120 12AC BL</b>	Magnetic Transformer, 25W Maximum Rating, 120 Volt, 12V AC, Black
<b>MAGXFMR 1C 60W 120 12AC BL</b>	Magnetic Transformer, 60W Maximum Rating, 120 Volt, 12V AC, Black
<b>TL548 LED 60W 120 12AC BL</b>	Trac 12 12V Plug-In Electronic Transformer, Black
<b>TL548 LED 60W 120 12AC WH</b>	Trac 12 12V Plug-In Electronic Transformer, White



TL602E

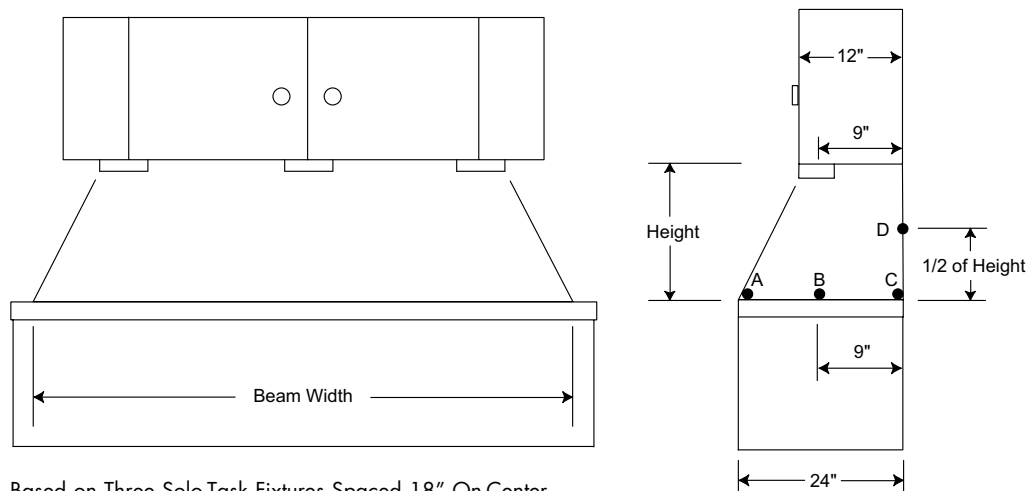


MAGXFMR

## LIGHTING APPLICATION DATA

### FOOTCANDLES ON HORIZONTAL WORK SURFACE

Three Solo-Task Fixtures



Based on Three Solo-Task Fixtures Spaced 18" On-Center

Height	Beam Width*	Footcandles			
		A	B	C	D
15"	51"	38.7	118.0	81.6	72.6
18"	53"	39.4	92.0	72.5	65.6
24"	57"	36.9	64.0	57.0	51.7

\* Beam width defined as 50% of maximum footcandles  
Rear wall reflectance 50%  
Counter surface reflectance 20%