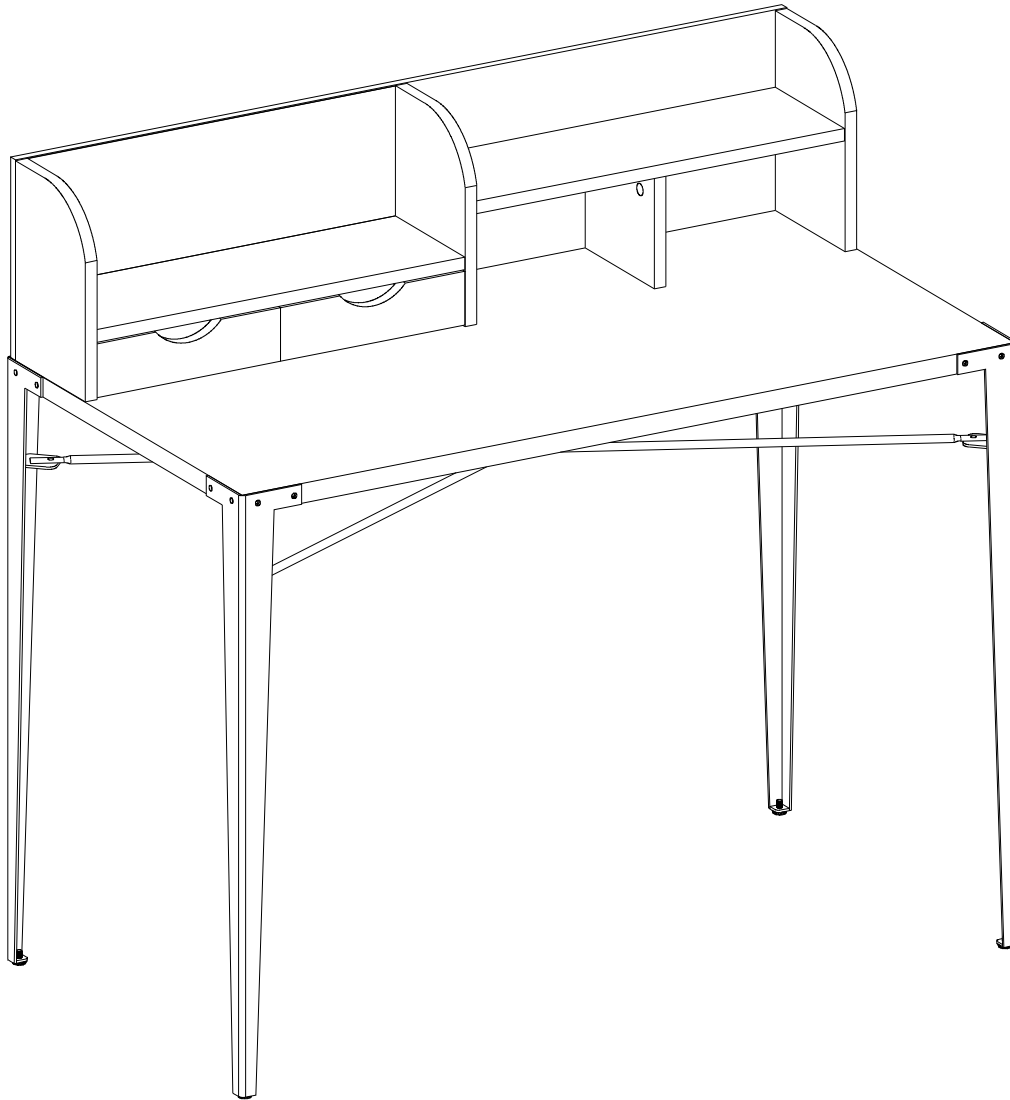


Item # : D42NYSEC

Assembly Instructions



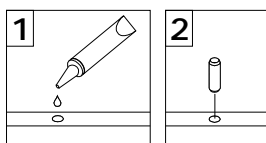
Walker Edison®

Please visit our website for the most current instructions, assembly tips, report damage, or request parts. www.walkeredison.com

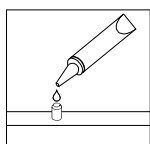
Revised 14/05/2019 (E)

General Assembly Guidelines

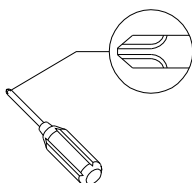
- I. Ensure that all parts and hardware are available before beginning assembly.
- II. Follow each step carefully to ensure the proper assembly of this product.
- III. Two people are recommended for ease in the assembly of this product.
- IV. The three main types of hardware used to assemble this product are : wood dowels , screws and bolts.
- V. The provided glue is to secure wood dowels in place . When first inserting dowels , locate the appropriate hole for the dowel , place a small amount of glue in the hole and insert the dowel . Wipe away excess glue immediately.



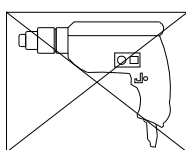
In future assembly steps when dowels are necessary to attach assembly parts together , place a small amount of glue on the end of the dowel before attaching parts together . Wipe away excess glue immediately.



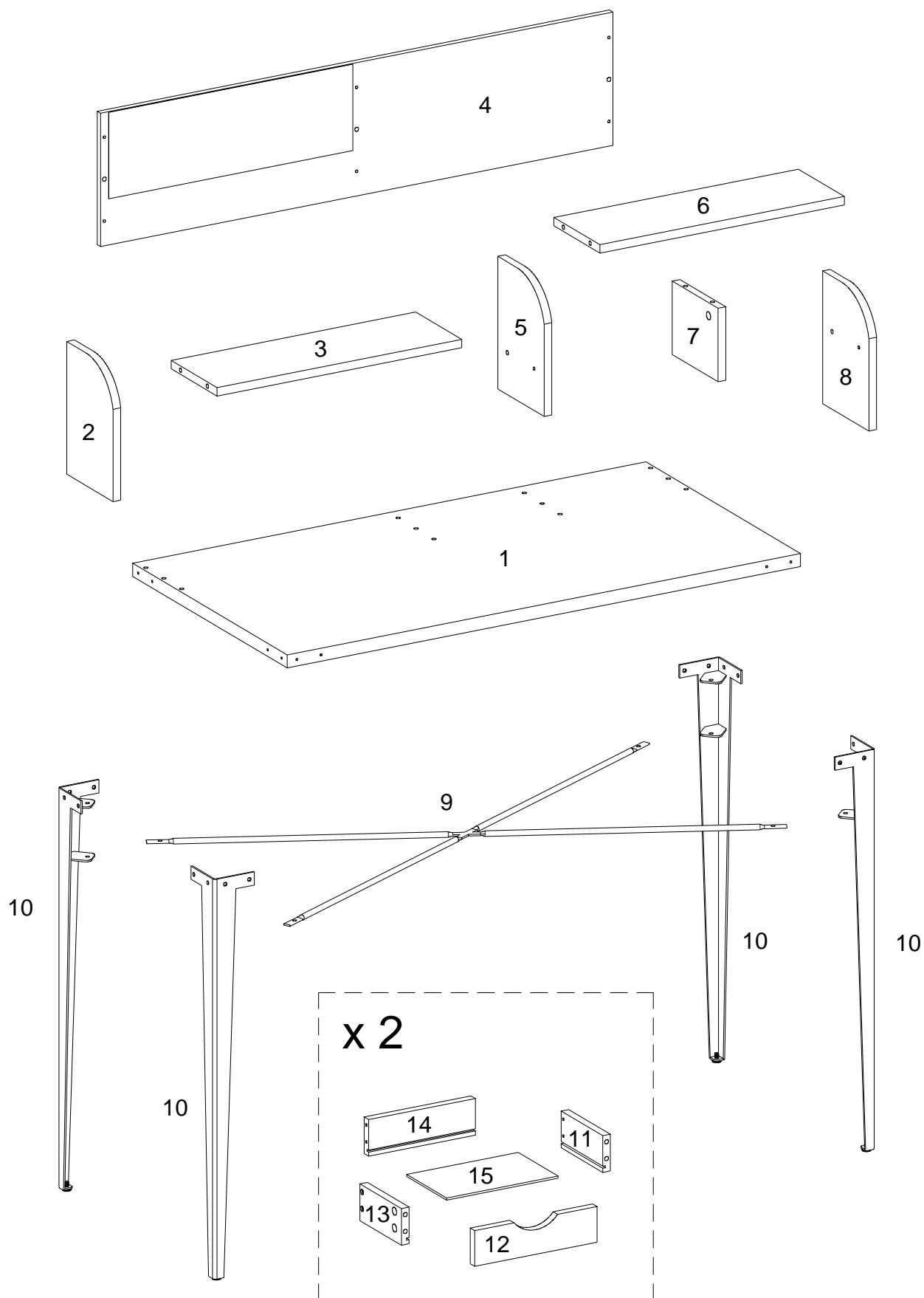
- VI. A Phillips head screwdriver is required for the assembly of this product .





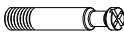






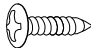


- VII. Power tools should not be used to assemble this product .

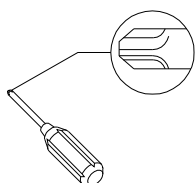


Parts List



Hardware List

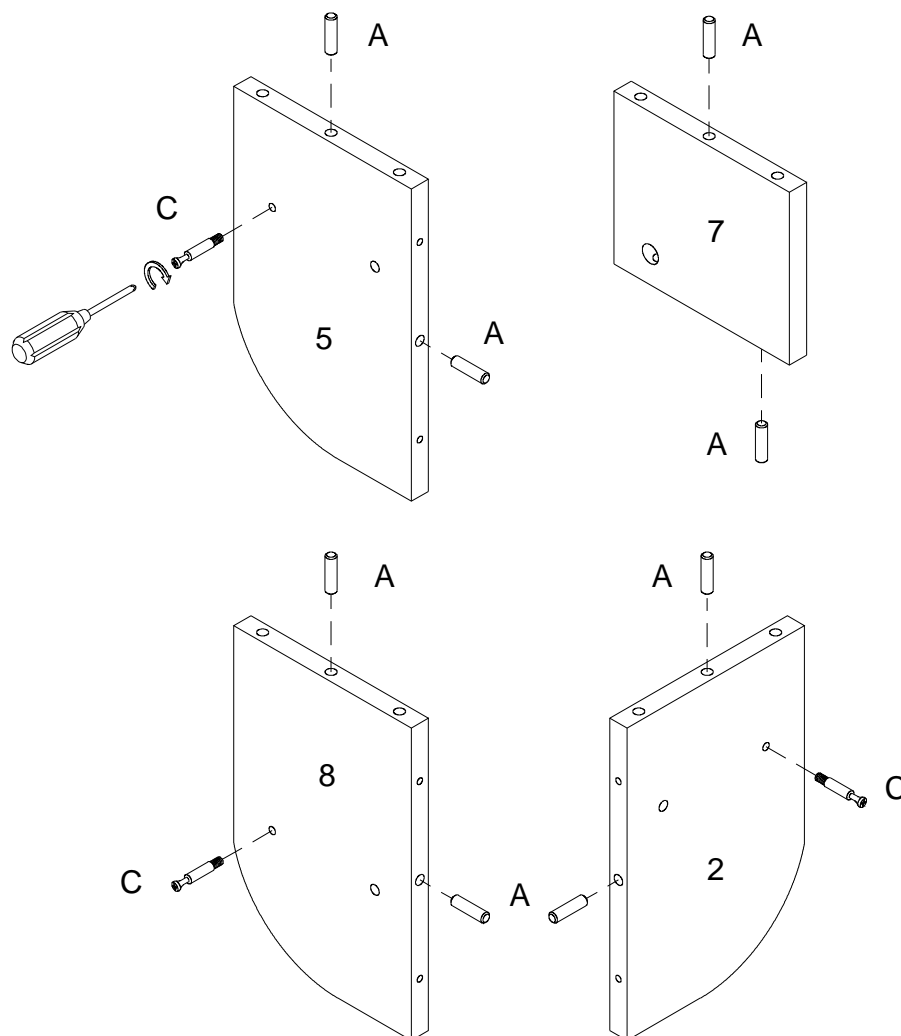
A		Ø8x30mm	Wooden dowel	12 pcs
B		Ø15x11mm	Cam lock	13 pcs
C		Ø6x35mm	Cam bolt	13 pcs
D		Ø30mm	Sticker	13 pcs
E		Ø6x50mm	Bolt	8 pcs
F		M 4	Hex Key	1 pc
G		Ø6x15mm	Bolt	8 pcs
H			Nut	4 pcs
J			Wrench	1 pc
K		Ø4x15mm	Screw	16 pcs
L		Ø4x32mm	Screw	14 pcs
M			Glue tube	1 pc



Philips head screwdriver required for assembly
(not included)

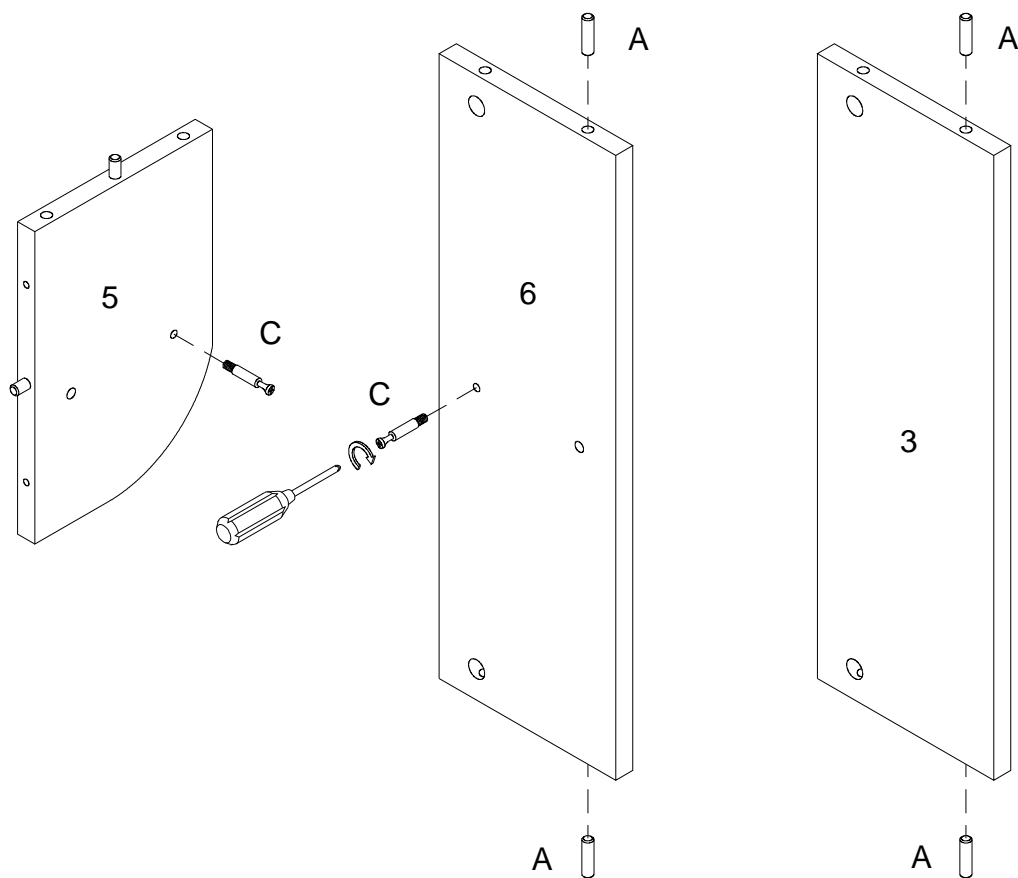
*The hardware quantities listed above are required for proper assembly.
Some extra hardware may also have been included.*

Step 1



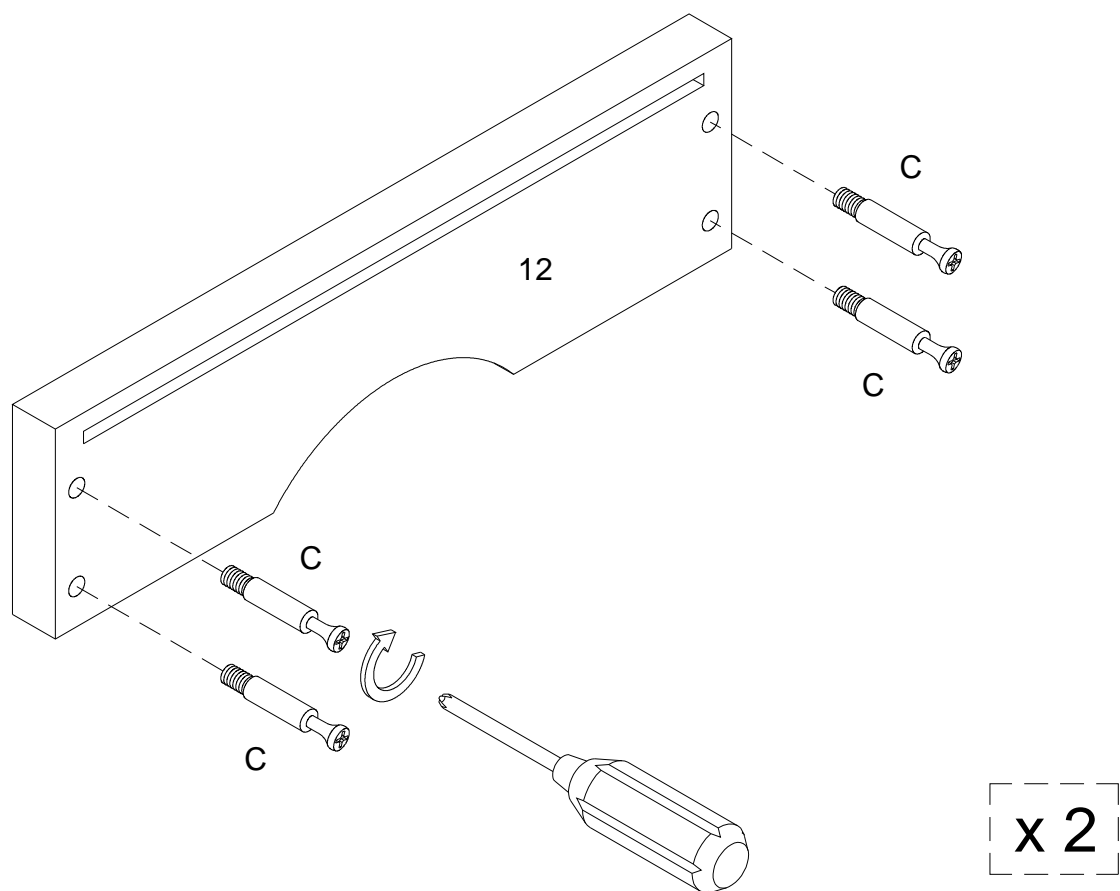
Insert wooden dowel (A) into parts (2,5,7,8), using cam bolt (C) secure parts (2,5,8) with Philips Head screwdriver as per diagram.

Step 2



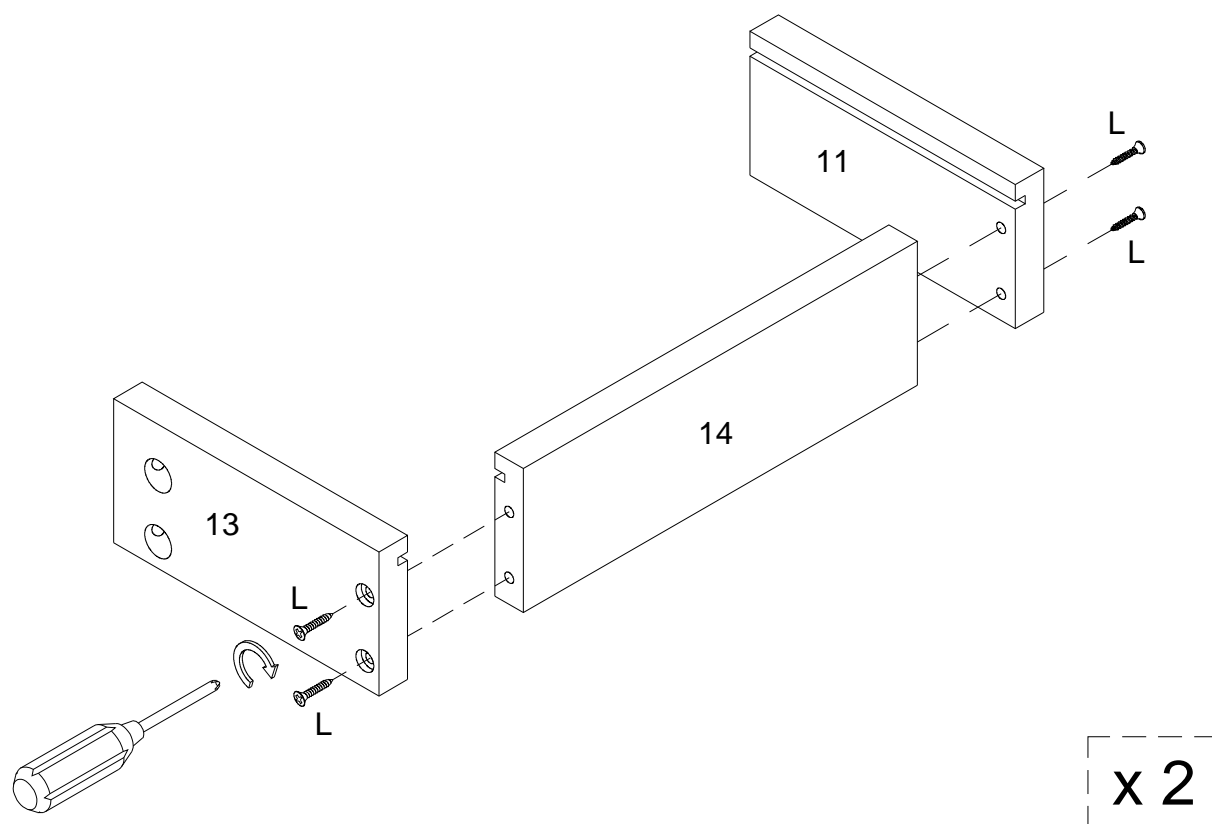
Insert wooden dowel (A) into parts (3,6), using cam bolt (C) secure parts (5,6) with Philips Head screwdriver as per diagram.

Step 3



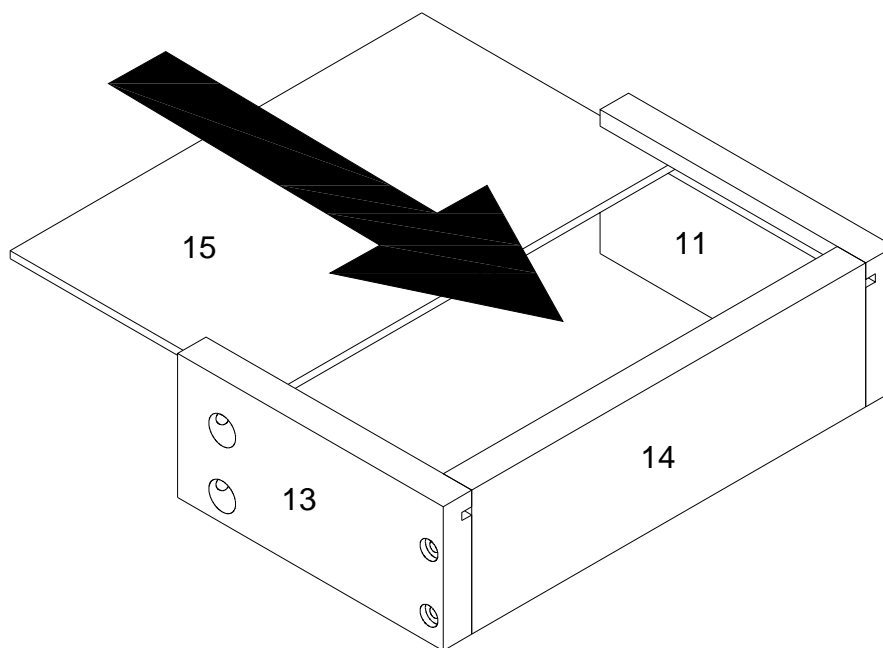
Using cam bolt (C) secure part (12) with Philips Head screwdriver as per diagram.

Step 4



Using cam screw (L) secure parts (11,13) into parts (14) with Philips Head screwdriver as per diagram.

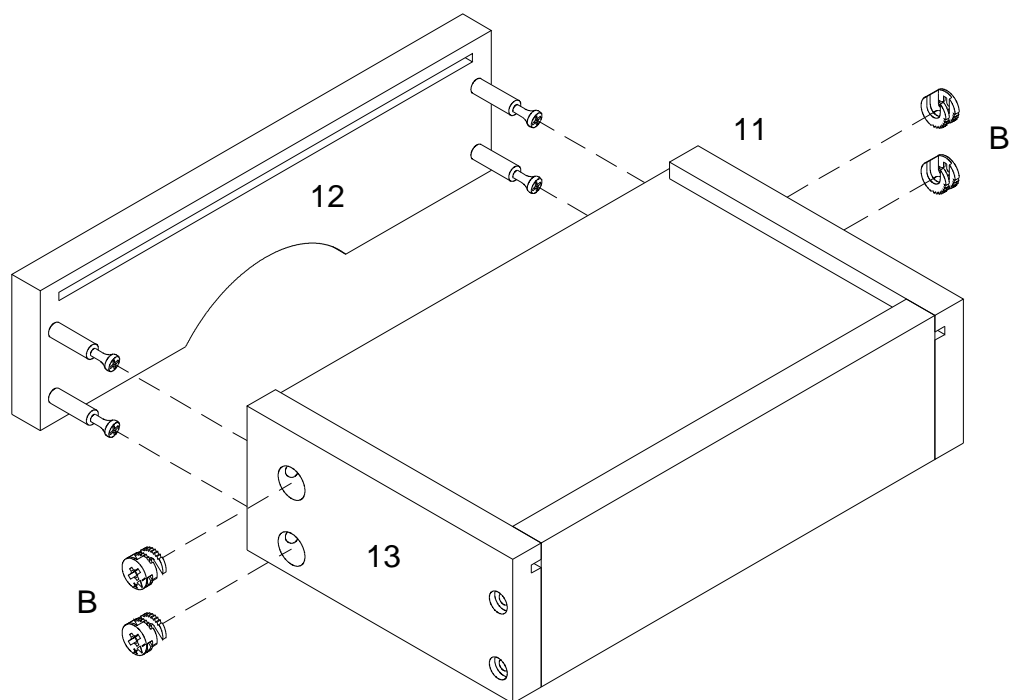
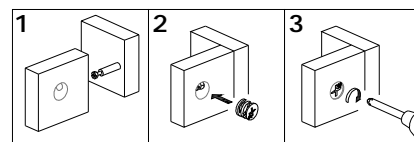
Step 5



x 2

Put part (15) to parts (11,13,14) as per diagram.

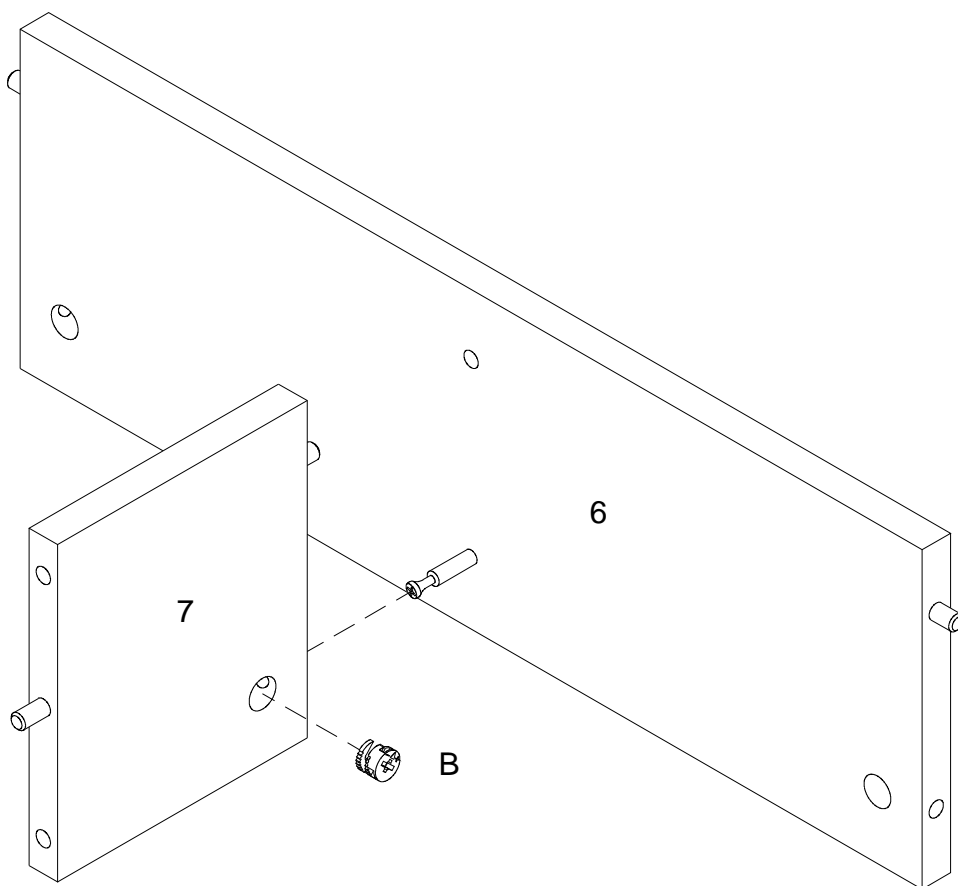
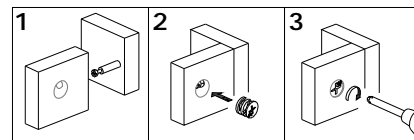
Step 6



x 2

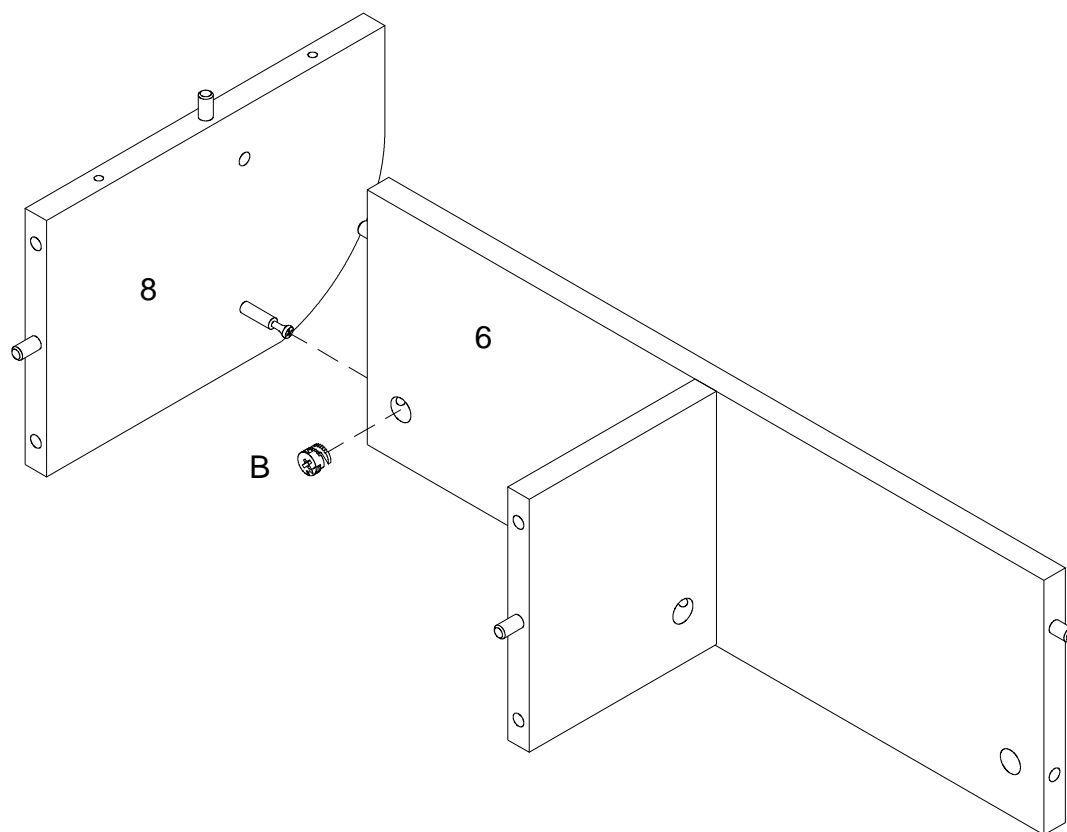
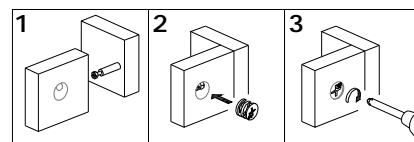
Using cam lock (B) secure part (12) into parts (11,13) with Philips Head screwdriver as per diagram.

Step 7



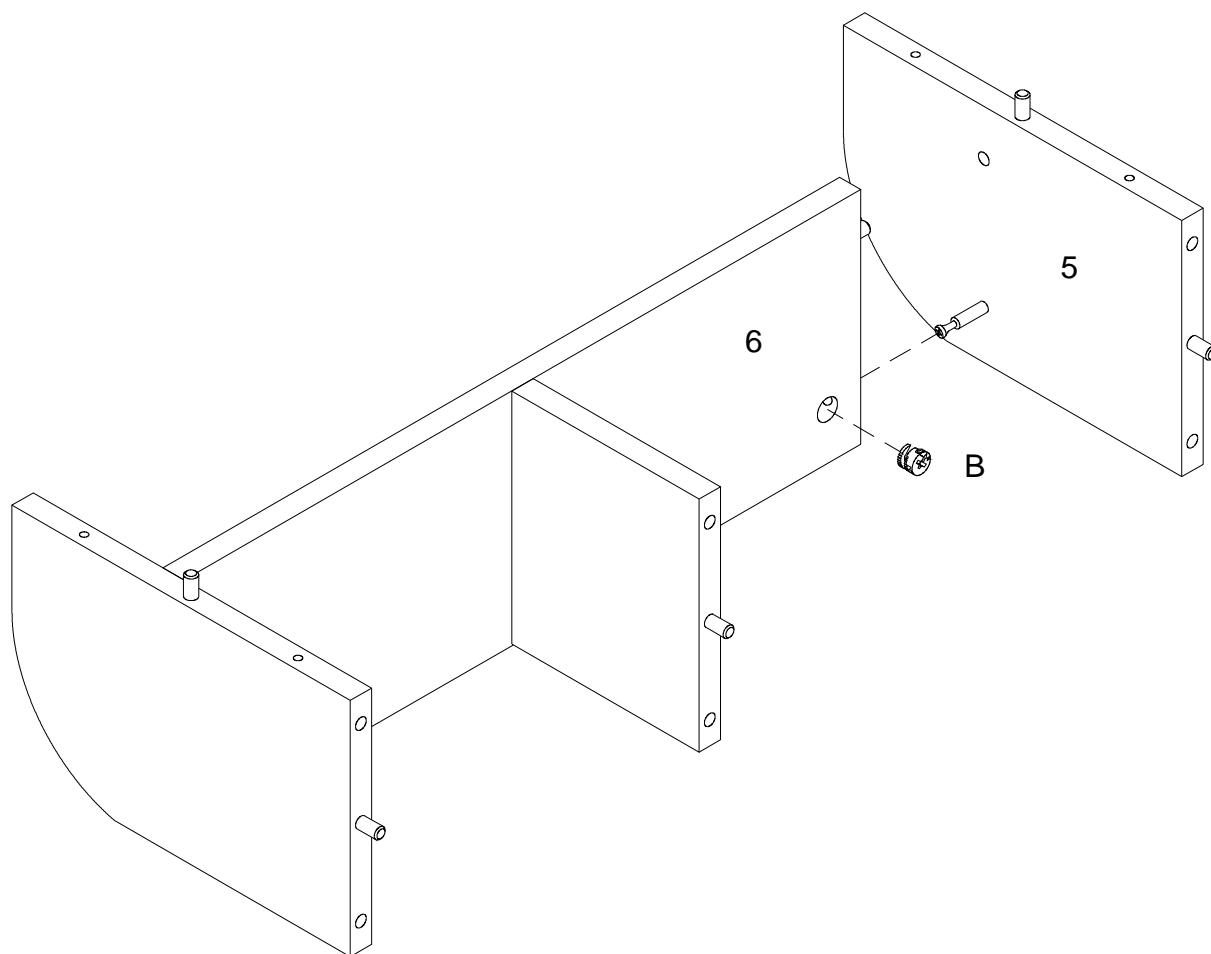
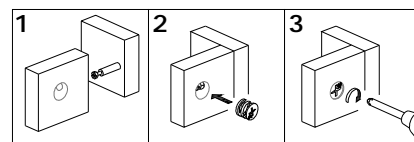
Using cam lock (B) secure part (7) into part (6) with Philips Head screwdriver as per diagram.

Step 8



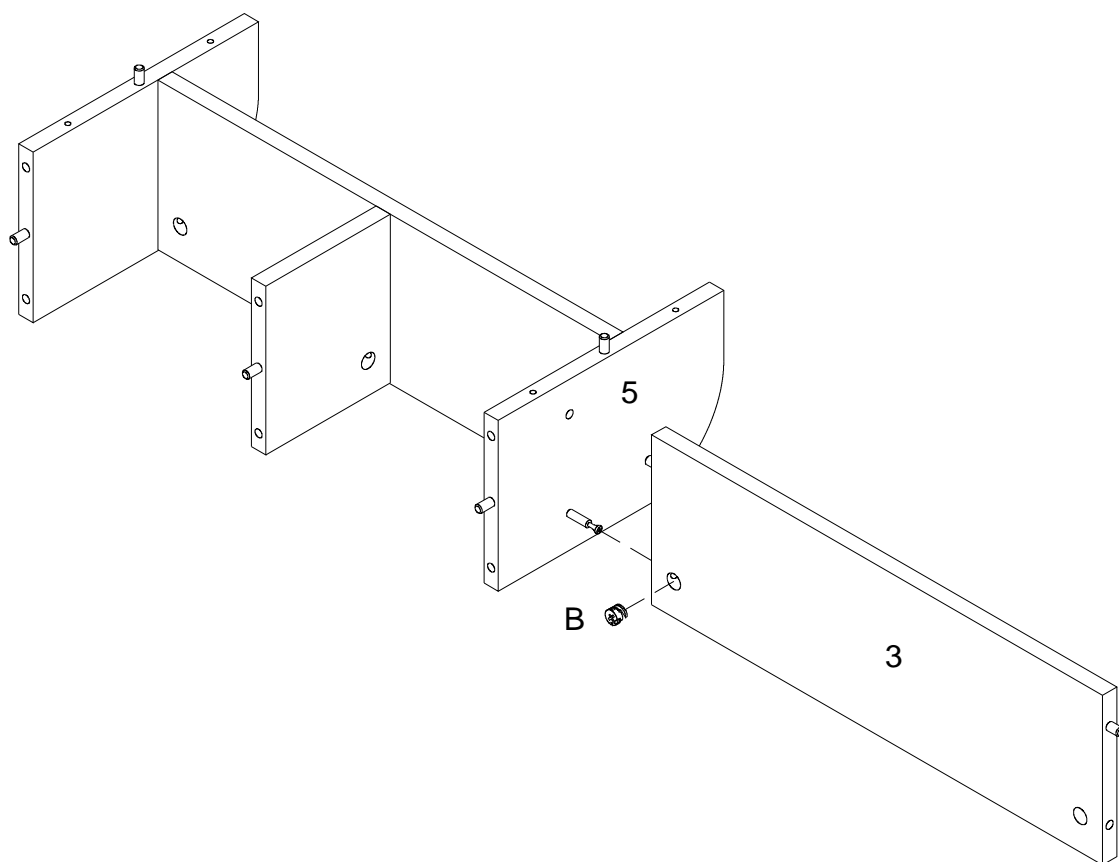
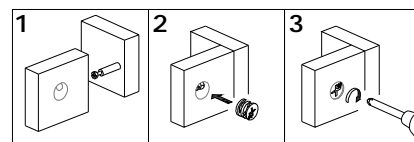
Using cam lock (B) secure part (8) into part (6) with Philips Head screwdriver as per diagram.

Step 9



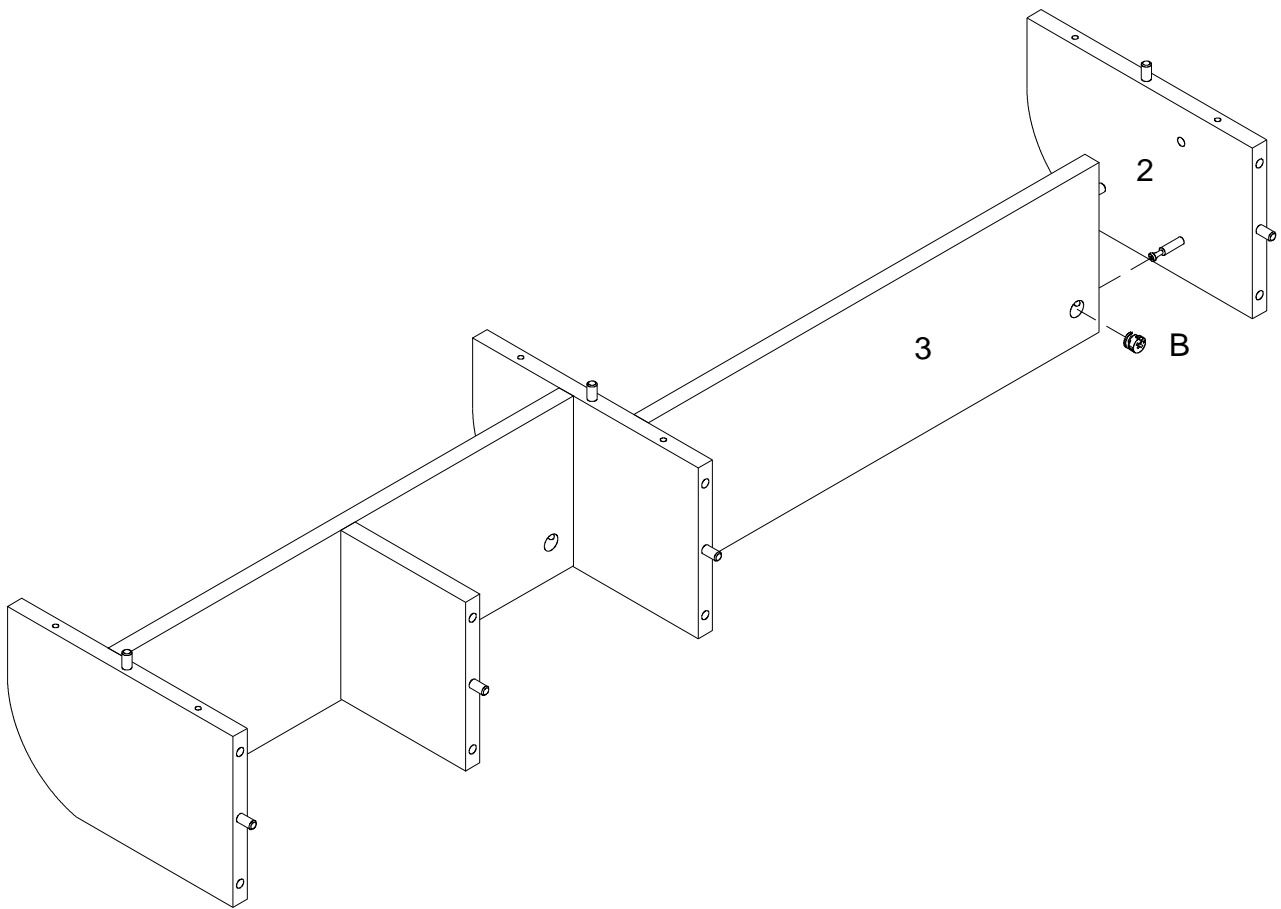
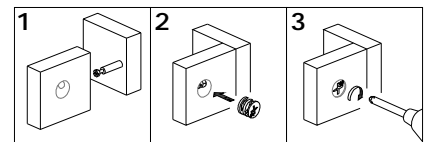
Using cam lock (B) secure part (5) into part (6) with Philips Head screwdriver as per diagram.

Step 10



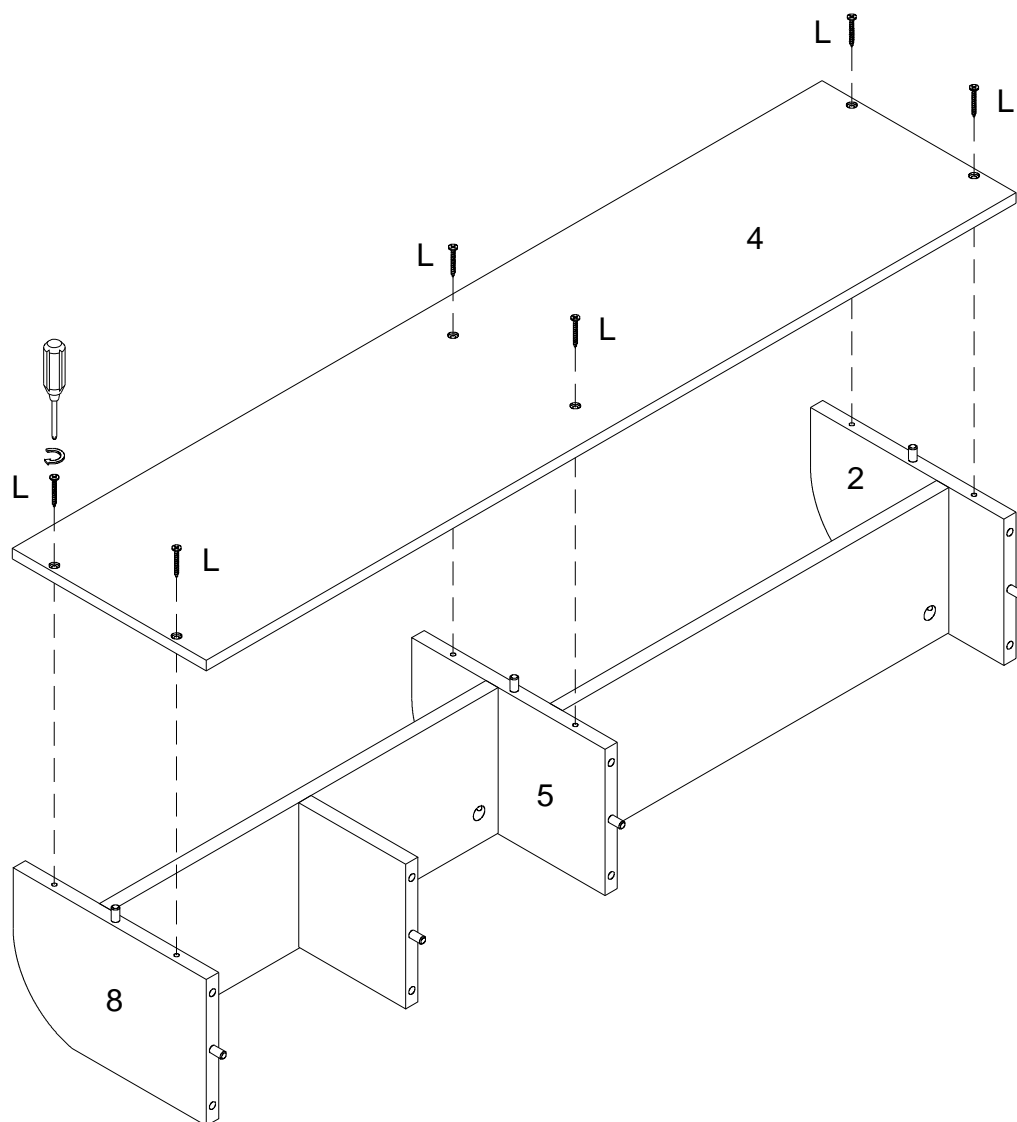
Using cam lock (B) secure part (3) into part (5) with Philips Head screwdriver as per diagram.

Step 11



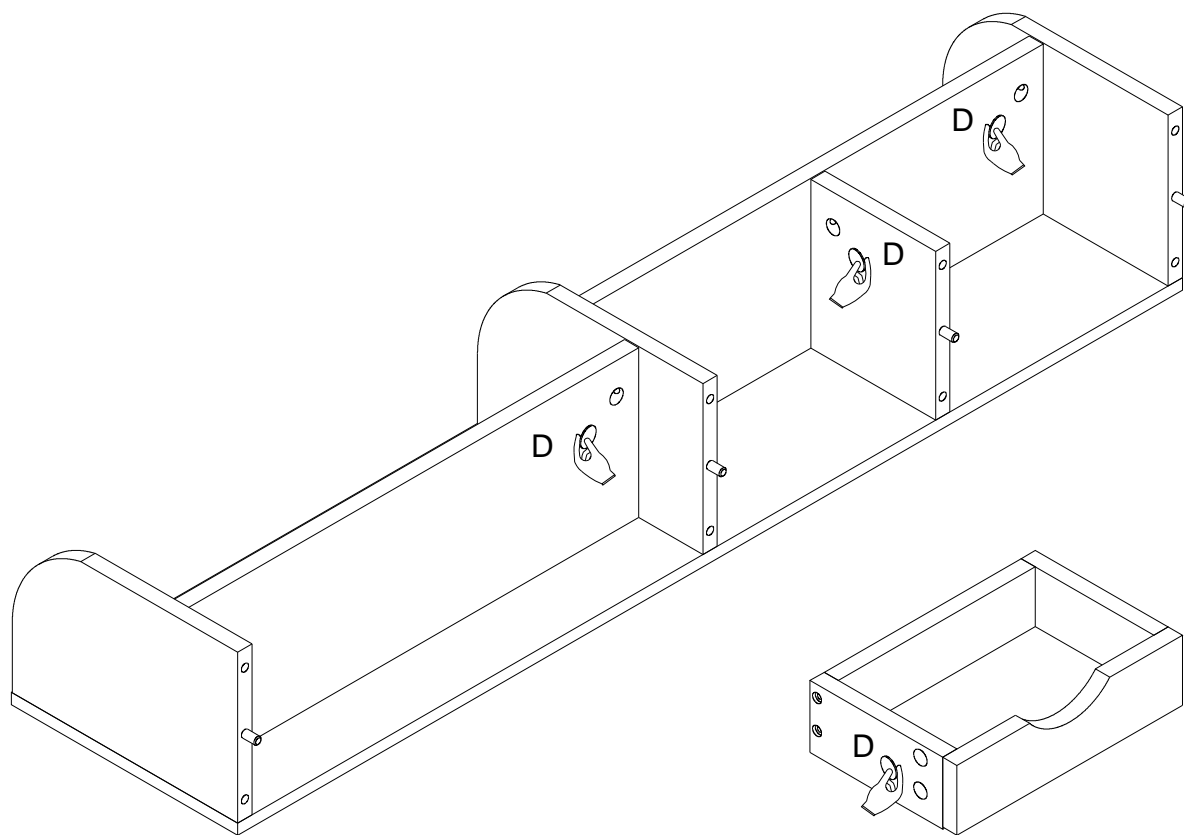
Using cam lock (B) secure part (2) into part (3) with Philips Head screwdriver as per diagram.

Step 12



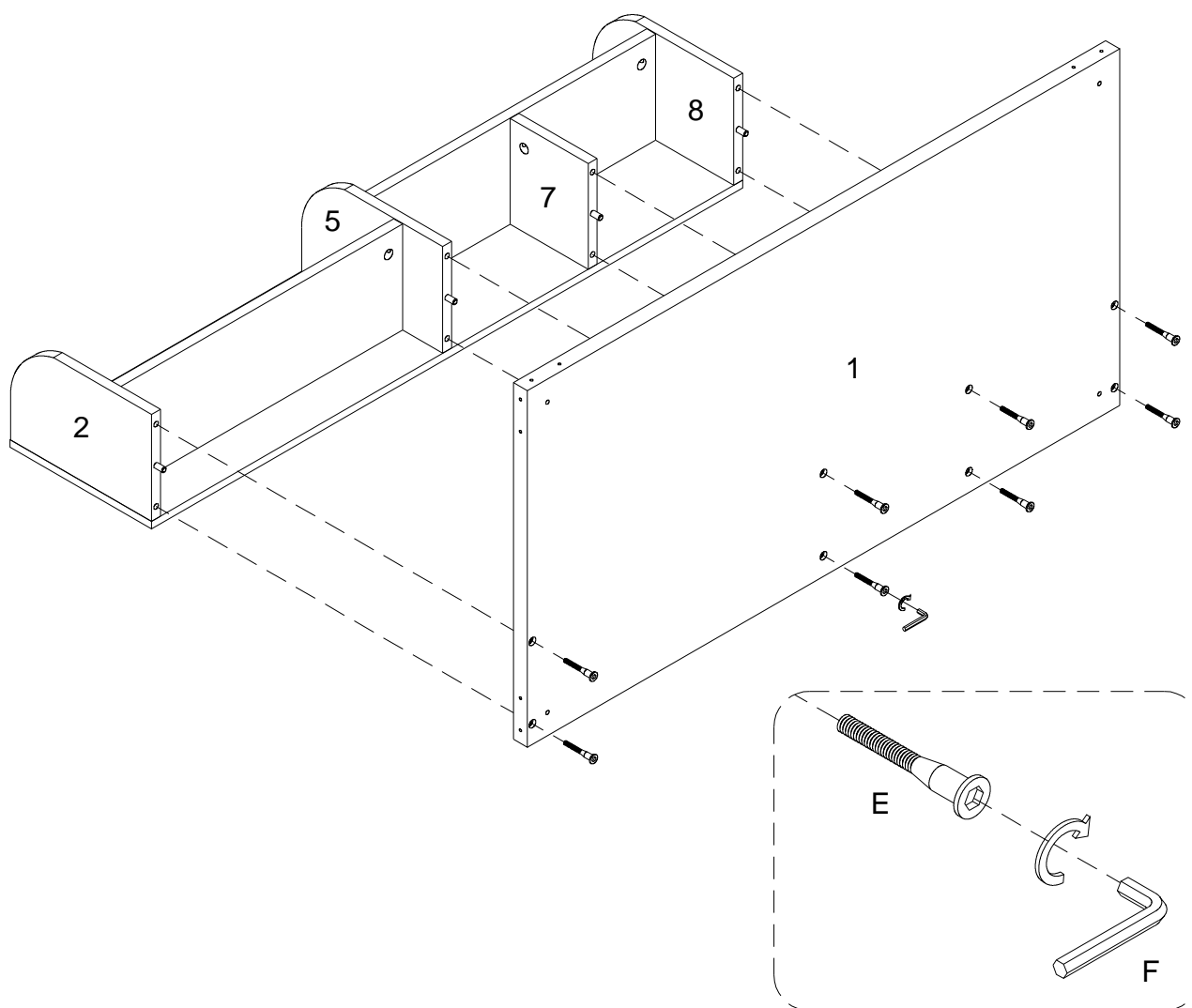
Using screw (L) secure part (4) into parts (2,5,8) with Philips Head screwdriver as per diagram.

Step 13



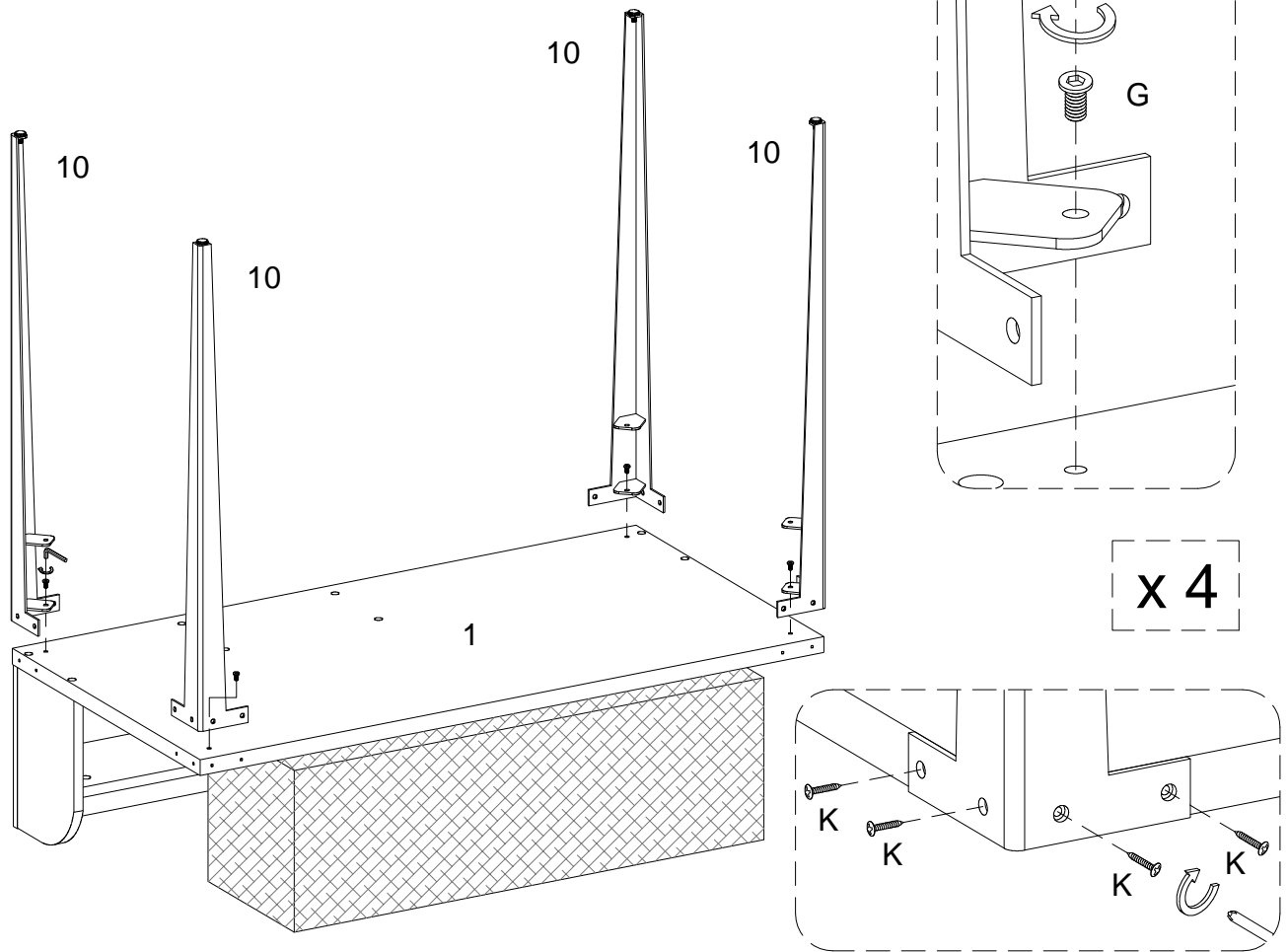
Place the sticker (D) cover the holes as per diagram.

Step 14



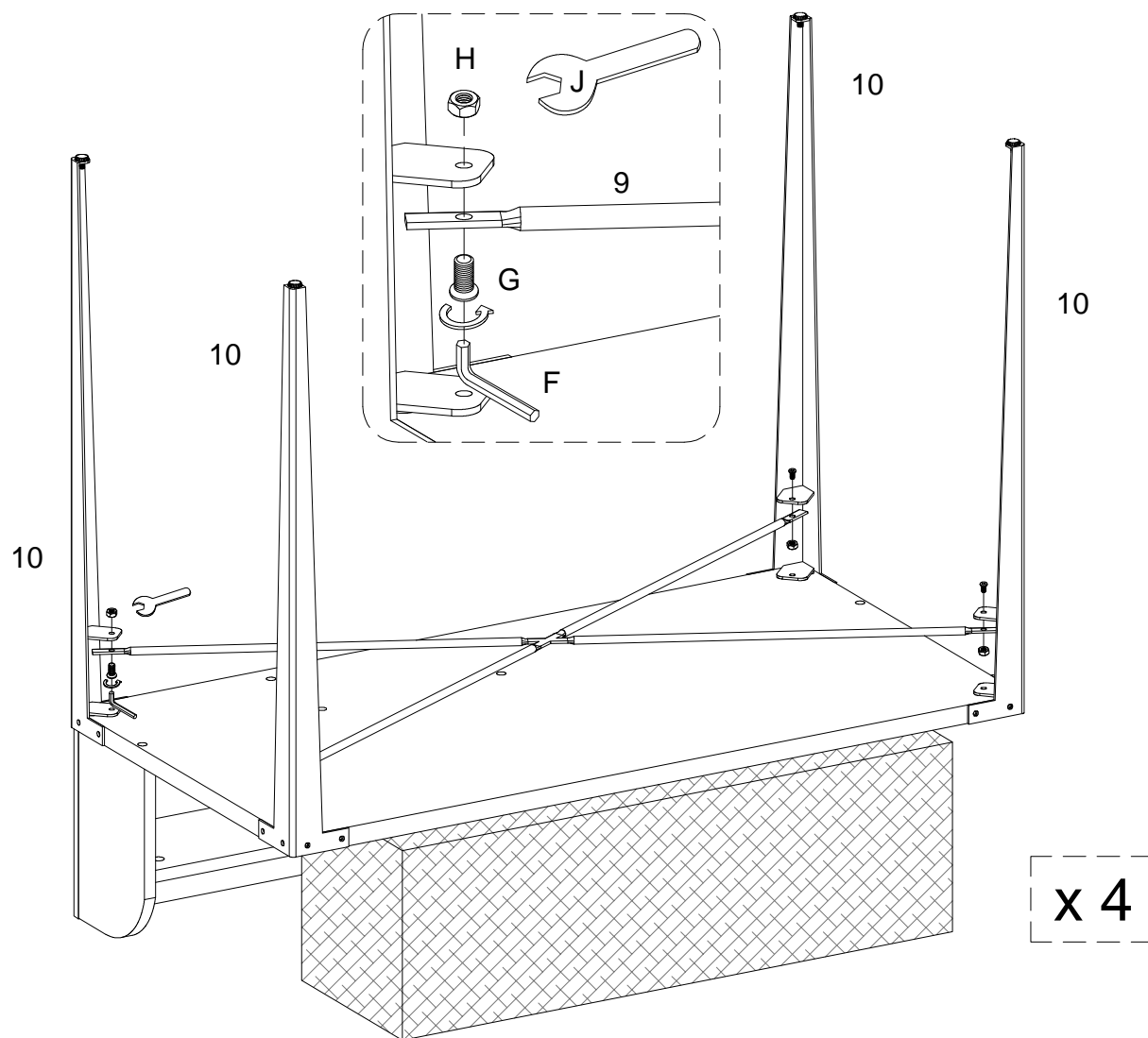
Using bolt (E) secure part (1) into parts (2,5,7,8) with hex key (F) as per diagram.

Step 15



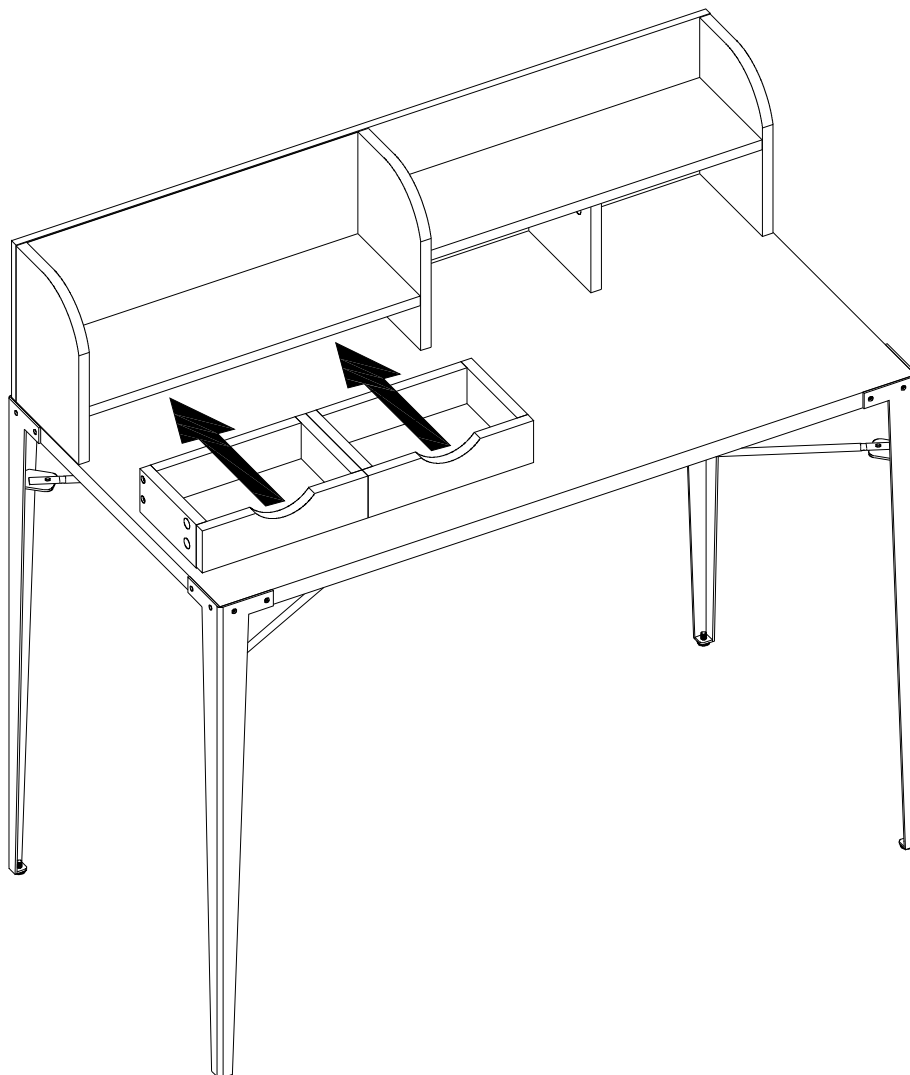
Using bolt (G) secure part (10) into part (1) with hex key (F) ,and using screw (K) secure part (10) into part (1) with Philips head screwdriver as per diagram.

Step 16



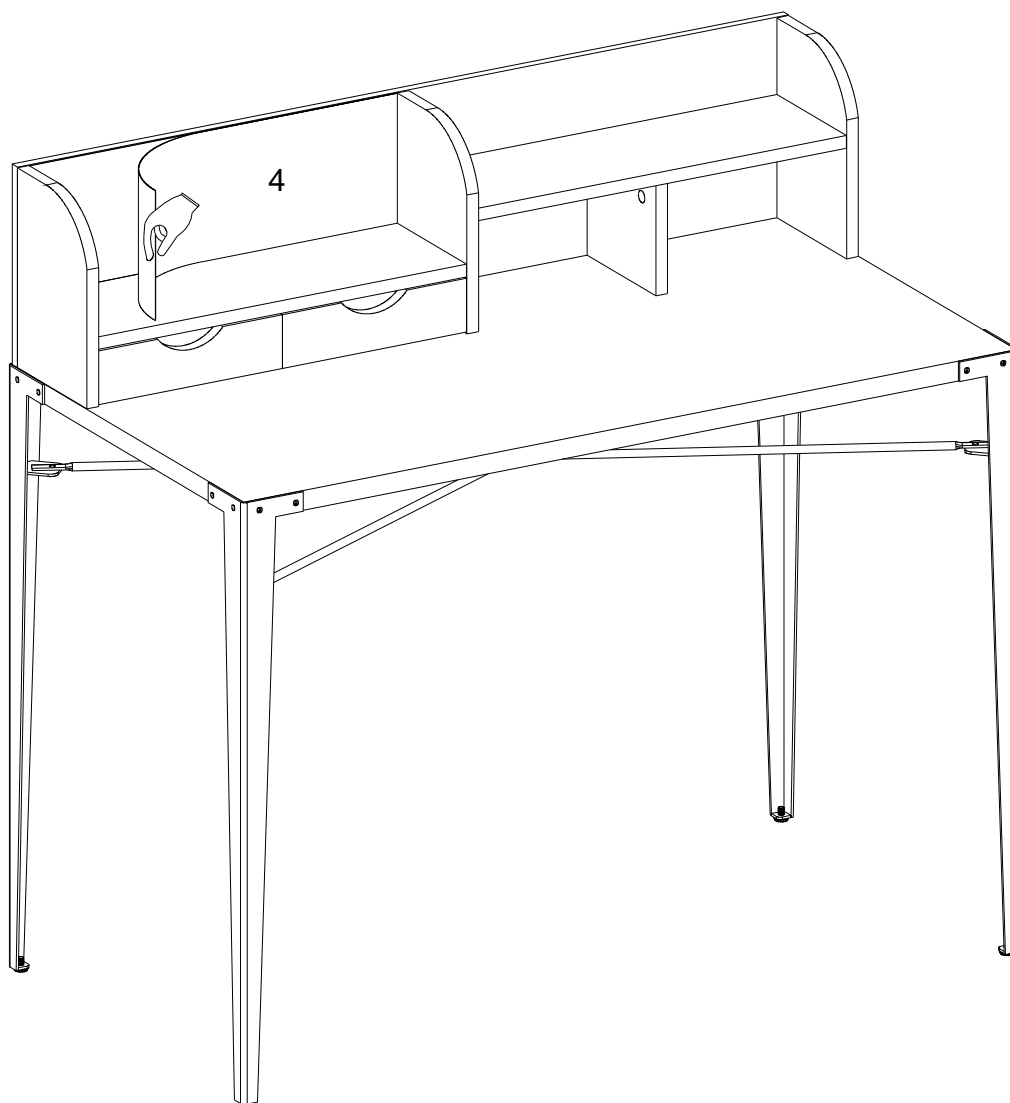
Using bolt (G) secure part (9) into nut (H) to part (10) with wrench (J).

Step 17



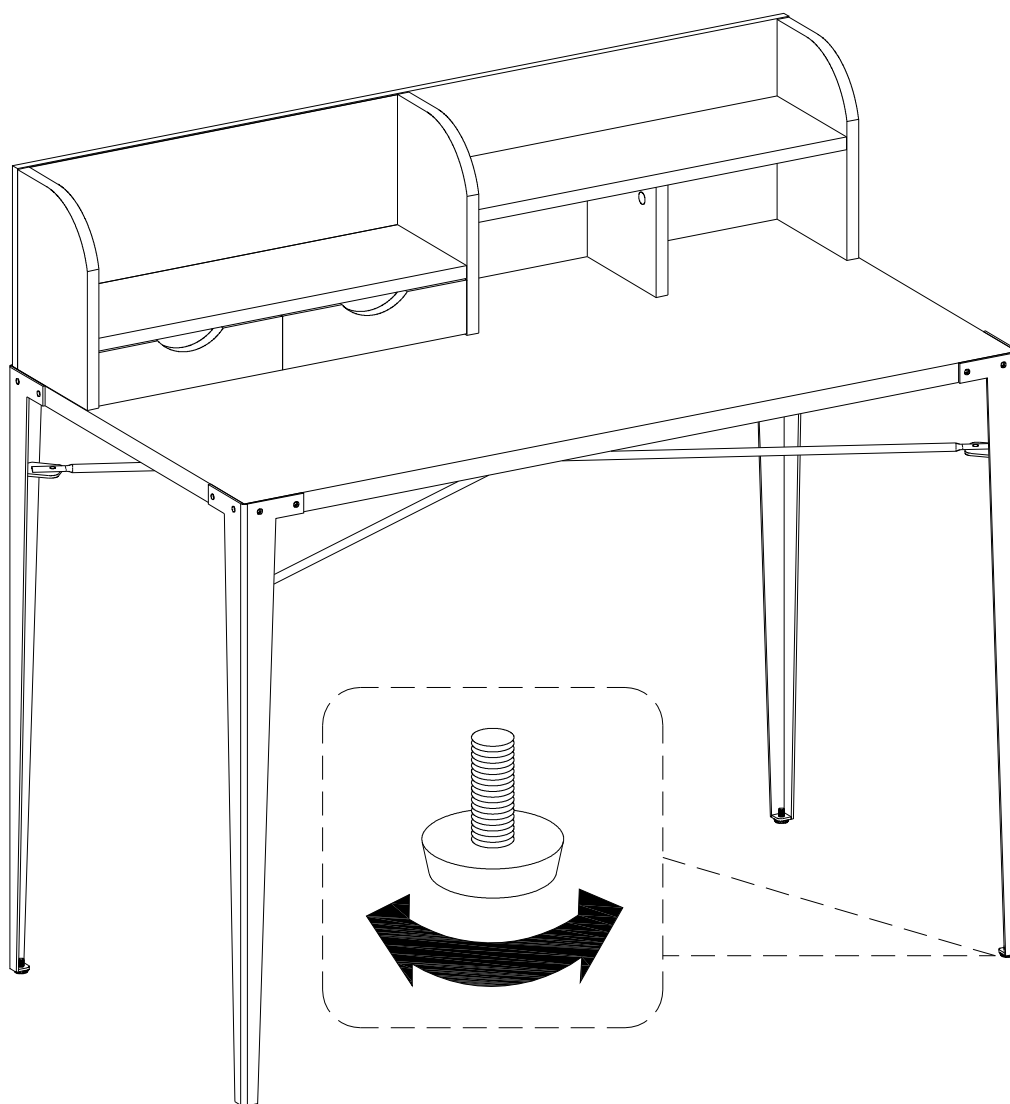
Put drawers into desk as per diagram.

Step 18



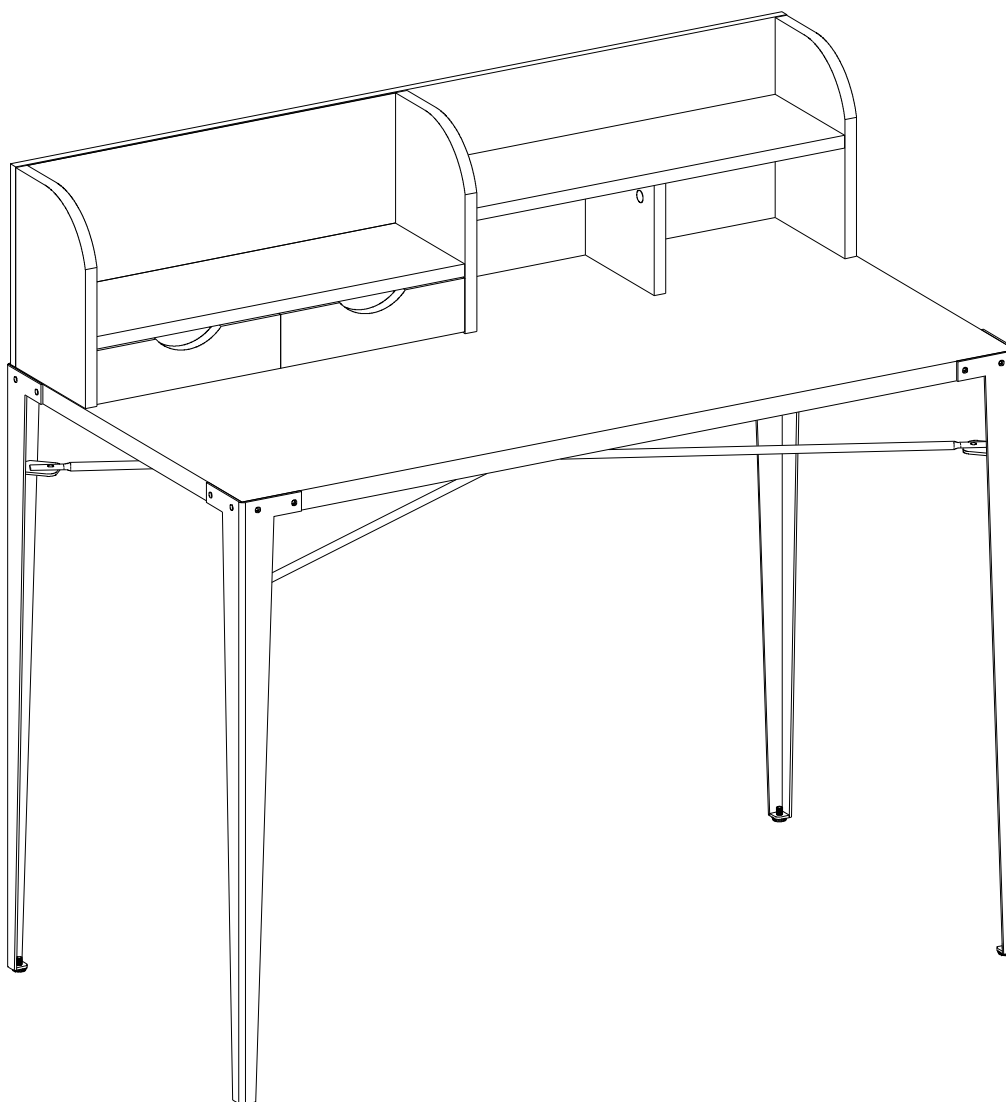
Tear off the protective film carefully.

Step 19



By adjusting the feet, ensure that the table is on the same level.

Step 20



Final Assembly