

SPECIFICATION SUBMITTAL SHEET

JONES STEPHENS CORPORATION

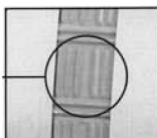
HEAVY DUTY NO HUB COUPLINGS



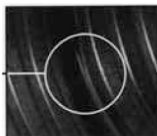
PART NO.	COUPLING SIZE	INSTALLATION TORQUE	CLAMPS FOR COUPLING
□ HDNHC1	1 1/2"	80	4
□ HDNHC2	2"	80	4
□ HDNHC3	3"	80	4
□ HDNHC4	4"	80	4
□ HDNHC5	5"	80	6
□ HDNHC6	6"	80	6
□ HDNHC8	8"	80	6
□ HDNHC10	10"	80	6



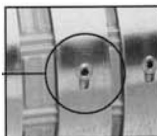
Larger Hex Head Screw:
The new 3/8" hex head screw is designed to apply the full load of 80in/lbs. of installation torque to the band/shield assembly.



Patented Bi-directional Shield Design: Our unique shield design employs bi-directional corrugations for maximum transfer of pressure from the clamps the gasket. This patented shield design adjusts to differences in the circumference and outside diameters for the pipes being joined. This eliminates gasket wrinkling and thereby eliminates leak paths. These parallel and transverse patterns on the gasket and pipe work to avoid pullout failures and provides a positive, reliable seal.



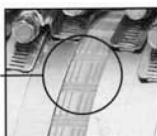
Specially Beaded Gaskets:
The heavy-duty coupling utilizes a specially beaded gasket that mates with the shield and clamping forces for superior sealing pressure and holding power. IDEAL gaskets comply with ASTM C564.



Floating Eyelet Design:
"Floating eyelets" fasten the clamps to the shield, allowing the clamp band and shield to move independently. This freedom prevents the shield from crimping during tightening, which can lead to leakage later on.



Mechanical Interlocking Clamp Design: IDEAL clamps feature a one-piece screw housing that mechanically interlocks the housing to the band. This one-piece housing design eliminates leak paths that can occur in staked or welded clamps.

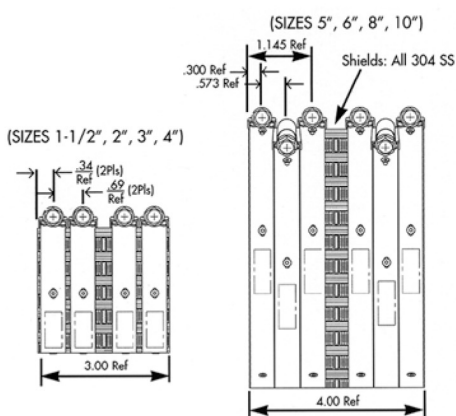


Green Shield:
The distinctive green shield quickly identifies the newly re-engineered IDEAL Heavy-Duty Couplings.

features & benefits:

- 9/16" stainless steel bands
- Stainless steel housing and shield
- 3/8" stainless steel screws
- 80 inch/lb. installation torque

This product and others like it can be found in the Jones Stephens catalog. Call today to order your catalog or download it from our website:
www.plumbest.com



DESCRIPTION: Couplings consist of gasket and shield assemblies. the shield assemblies have four or six clamps depending on size. the clamps are fastened with eyelets to the bi-directional corrugated shield.

MATERIALS: Steels used in couplings are stainless steels. Shields, bands and housings are AISI 304. Screws and eyelets are AISI 305. Gaskets are neoprene rubber.

SPECIFICATIONS: Factory Mutual EN 1618. Couplings comply with ASTM C564, ASTM 1277, and City of New York MEA 253-98-E. Gaskets are made from an elastomeric compound that meets the requirements of ASTM C564.



Jones Stephens Corporation
3249 Moody Parkway • Moody, Alabama 35004
Toll Free Phone: 1-800-355-6637 • Toll Free Fax: 1-800-462-6991
www.plumbest.com