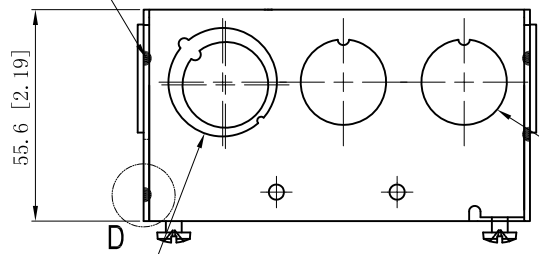


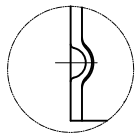
SIDES	BOTTOM
8 1/2" KNOCKOUTS	
4 1/2"-3/4" MOON KNOCKOUTS	
2 PCS 8-32x1/2 Screws Installed	
Material: Steel-0.0625"-G60 Galvanized	

12 PLACES SPOT WELDING

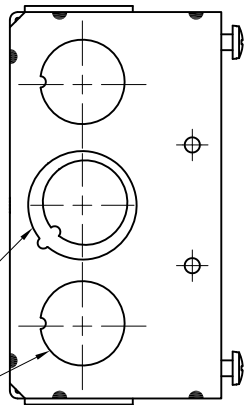


4 1/2" KNOCKOUTS $\phi=22.50$ [$\phi=0.886$] MIRROR

2 1/2"-3/4" MOON KNOCKOUTS $\phi=22.50$ [$\phi=0.886$]
 $\phi=28.50$ [$\phi=1.122$] MIRROR

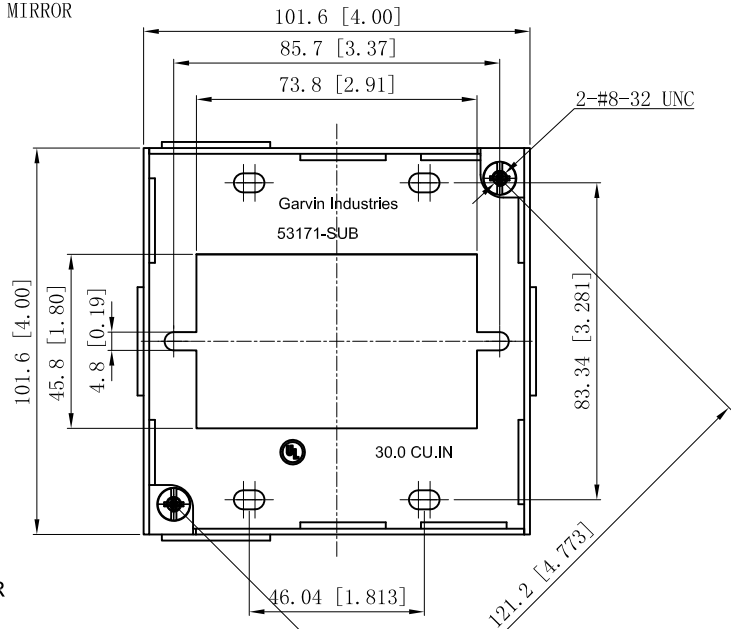


WELDING STYLE DETAIL VIEW D

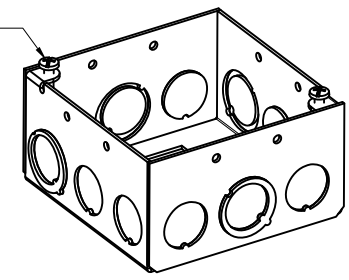


4 1/2" KNOCKOUTS $\phi=22.50$ [$\phi=0.886$] MIRROR

2 1/2"-3/4" MOON KNOCKOUTS $\phi=22.50$ [$\phi=0.886$]
 $\phi=28.50$ [$\phi=1.122$] MIRROR



#8-32, x2



This data sheet is for reference only. GARVIN INDUSTRIES reserves the right to make changes to the design without prior notice.

DESCRIPTION
TRADE REFERENCE TERMS

STANDARD PACKING
25 PCS

GARVIN INDUSTRIES		
4" SQUARE BOXES 2-1/8" DEEP		
SIZE	DWG NO.	REV
A4	53171-SUB	A
DATA SHEET		