

# APP USER GUIDE



**24/7 HELP** For 24/7 customer support, visit [feit.com/help](http://feit.com/help)

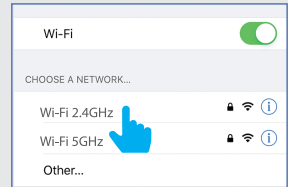
**System Requirements**  
Minimum: iOS 11.0, Android™ 6.0 Marshmallow or higher  
- Dedicated 2.4GHz Wi-Fi Network -

Your screen images may differ from this user guide.

## BEFORE USING THIS USER GUIDE SEE INCLUDED INSTALLATION GUIDE FOR PROPER PRODUCT INSTALLATION.

**NOTE:** Only works with 2.4GHz Wi-Fi networks.

Go to your Wi-Fi settings and connect your phone to your 2.4GHz Wi-Fi network.

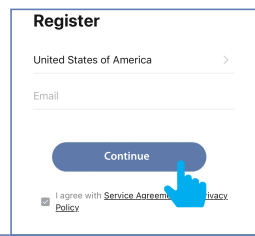


1 Download the **Feit Electric App**.

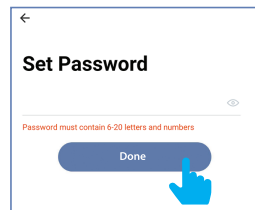


## Set Up Device

2 Launch the **Feit Electric App**. Enter email address to register or log into your account. Then tap **Continue**. A verification code will be sent to your email.

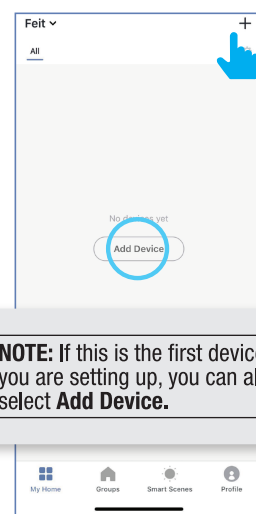


3 Create a password then tap **Done**.



## 4 Adding Device

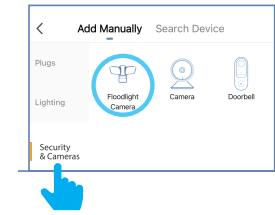
Tap **+** in the upper right corner.



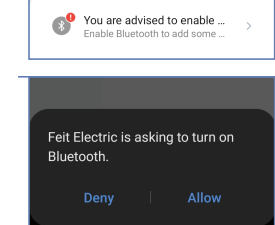
**NOTE:** If this is the first device you are setting up, you can also select **Add Device**.

## 5 Tap Security & Cameras and select Floodlight Camera.

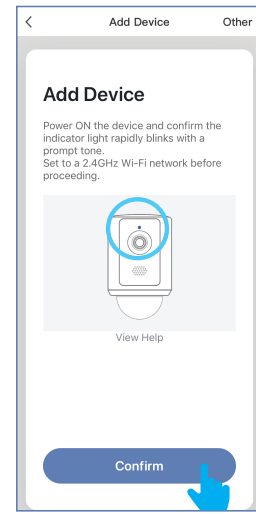
Tap **+** in the upper right corner.



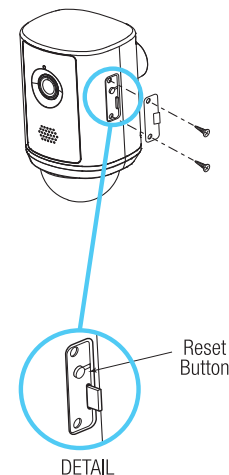
**NOTE:** Please enable Bluetooth for EZ Mode pairing.



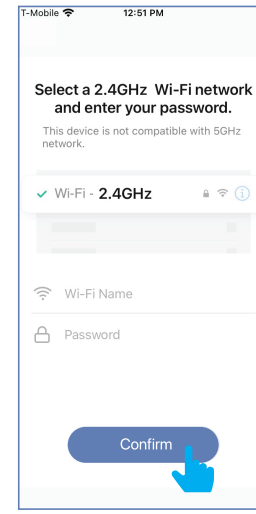
6 The first time you power up the **Floodlight Security Camera**, it will automatically go into pairing mode. The LED indicator light will blink blue. Tap **Confirm** to continue.



7 If the LED is not blinking blue, press and hold the **Reset Button** for 15 seconds or until you hear an audible tone. If it is blinking blue move to step 8.



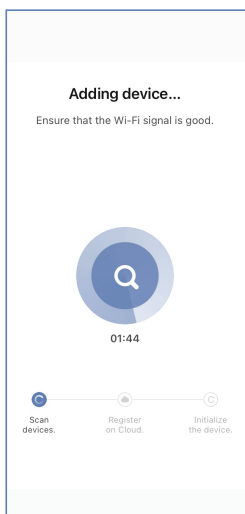
8 After confirming that you are on a 2.4GHz Wi-Fi network, enter your password then tap **Confirm**.



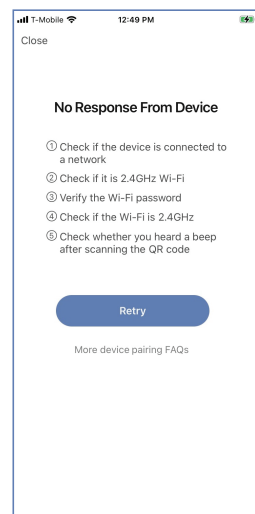
9 For QR code utilization, follow the instructions in image below.



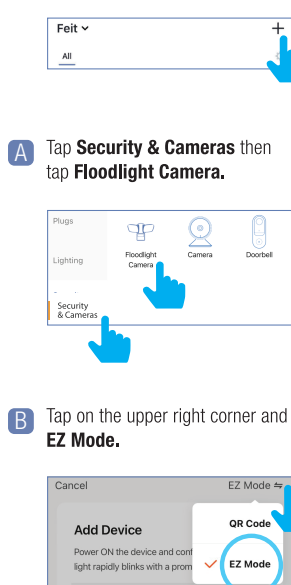
10 The **Adding device** status window will appear. Wait until the connection is complete. If the device is added successfully move to step 13.



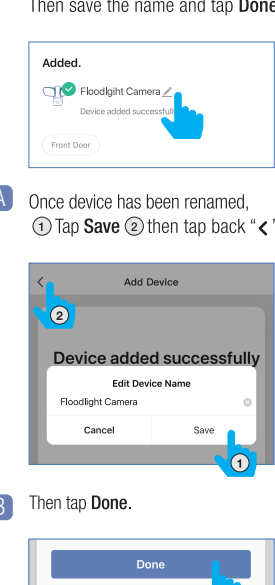
11 If you see this error message, check the troubleshooting options below then **Retry**.



12 Alternate connection option is available. Tap **+** in the upper right corner.

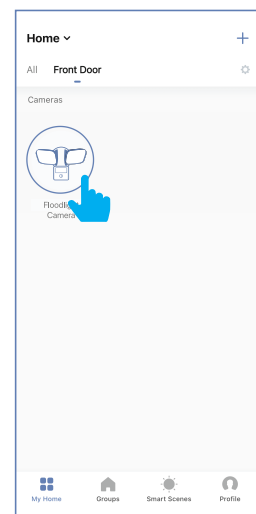


13 Once device is successfully added, tap the **Pen** icon to rename the device. Then save the name and tap **Done**.

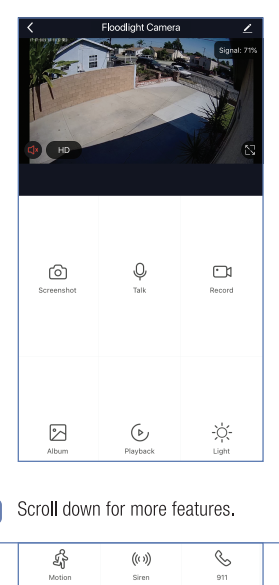


## Use Device

1 Tap the device icon to enter the control panel.

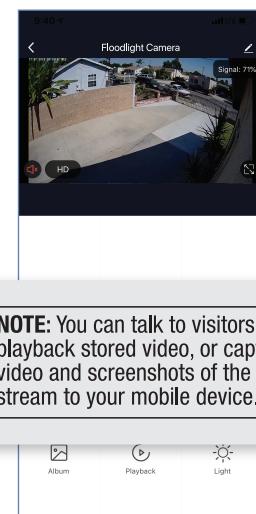


2 From the control panel you can access features and control your floodlight.



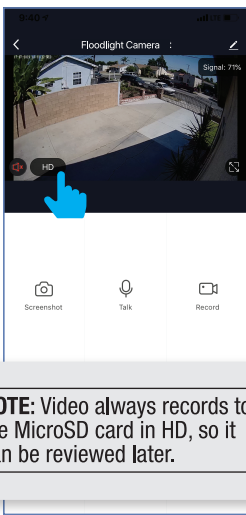
## 4 See Live Streaming

You will see live streaming video from your camera and be able to take action if needed.



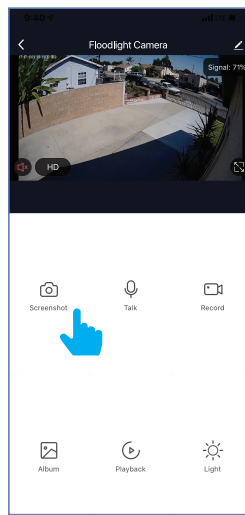
**NOTE:** You can talk to visitors, playback stored video, or capture video and screenshots of the live stream to your mobile device.

5 Select **HD** or **SD** video quality to view on the device screen.

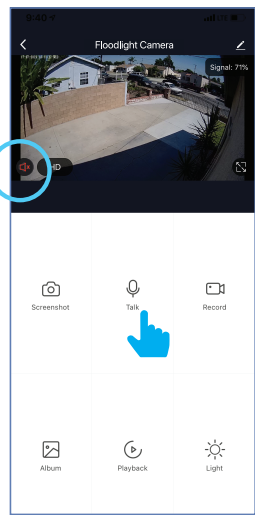


**NOTE:** Video always records to the MicroSD card in HD, so it can be reviewed later.

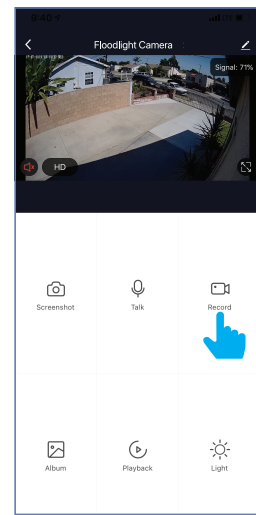
6 **Screenshot**  
Tap **Screenshot** to save a screenshot of the video to your **Album**.



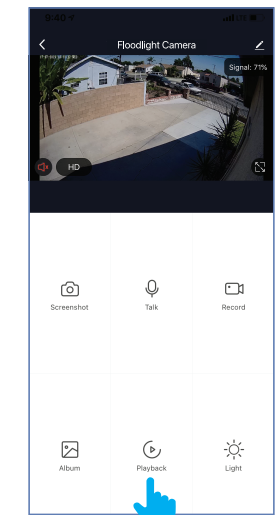
7 **Talk**  
Tap **Talk** to speak to visitors. Make sure the audio icon is ON to hear audio.



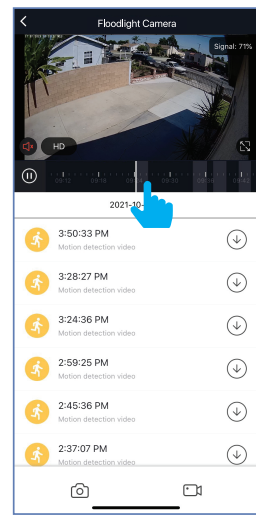
8 **Capture Video**  
Tap **Record** to manually capture and save the video to your **Album**. Tap **Record** again to save.



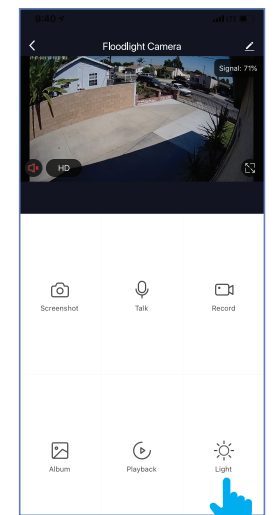
9 **Playback**  
Tap **Playback** to view recording or screenshots or download events from your local MicroSD card.



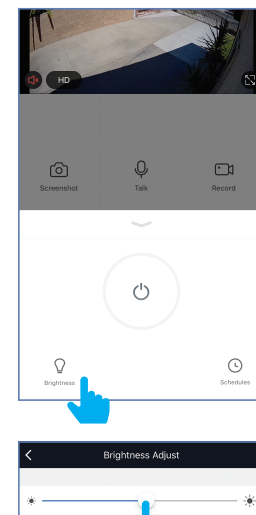
A In **Playback**, swipe on the time bar to view the recorded video. Motion activated video always records in HD to the MicroSD card for clear playback.



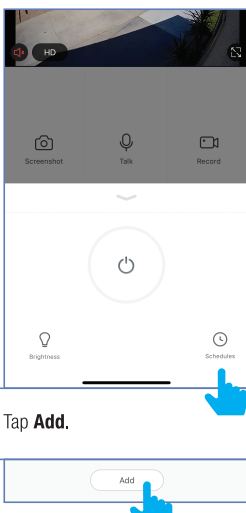
10 **Light**  
Tap **Light** to adjust brightness, set schedules or turn the lights On/Off.



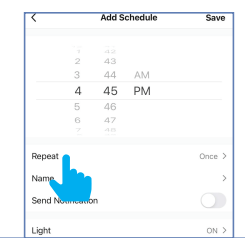
A Tap **Brightness** to adjust light levels or power button to turn On/Off.



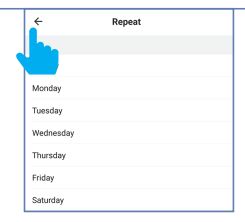
B Tap **Schedules** from the light menu to set a time for your lights to go On/Off.



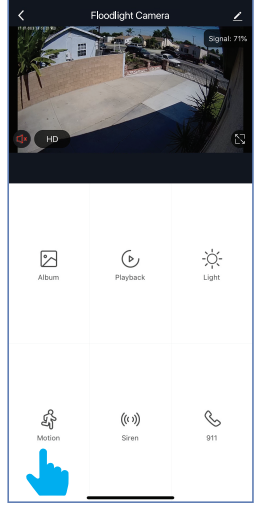
D Choose a time to schedule your light to go On/Off. To repeat on certain days of the week, tap **Repeat** otherwise the schedule will only occur once.



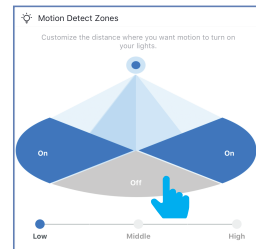
E Tap on the day(s) of the week you would like the schedule to repeat, then tap back **<** then **Save**.



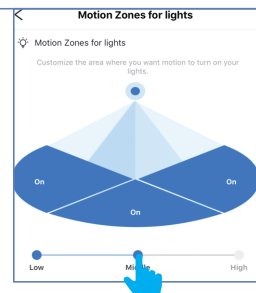
11 **Motion**  
Tap **Motion** to set the motion detection zones and timer for the lights and camera.



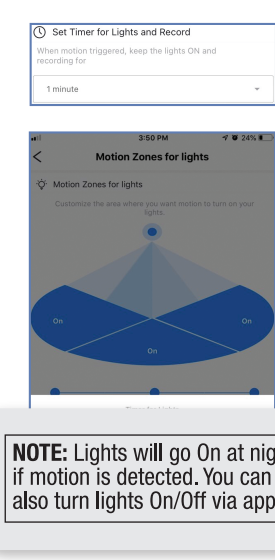
A Turn zones On/Off by tapping on zones.



B Adjust the motion detection sensitivity by tapping **Low**, **Middle** or **High**.



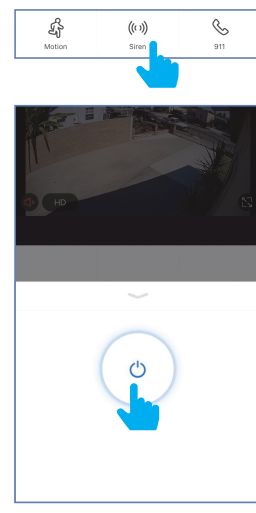
C Set the length of time the lights and recording will stay on after motion is detected.



**NOTE:** Lights will go On at night if motion is detected. You can also turn lights On/Off via app.

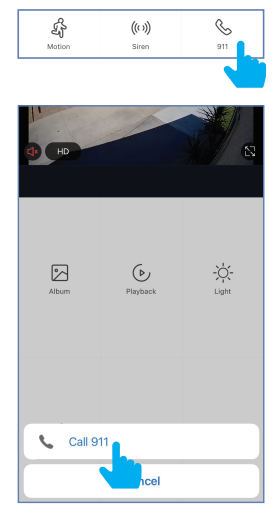
## 12 Siren

From control panel scroll down to sound the Siren. Tap **Siren** then tap on **On** button.



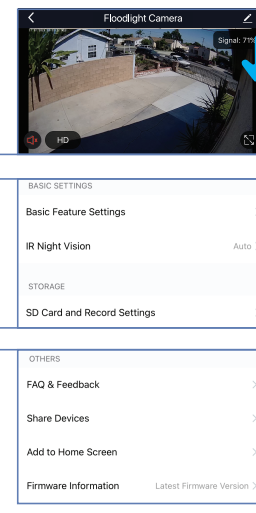
## 13 911

From control panel scroll down to call 911. Tap **911** then tap on **Call 911** button.



## 14 Device Sharing

Device Settings are available on the control panel by tapping the **Pen** icon. Device Settings include: Basic Settings, Advance Settings, Storage and Others.



### 15 Adjust Basic Feature Settings

From the device Settings, tap **Basic Feature Settings**.

**Indicator Light** - turn Indicator Light On/Off.



**Flip Camera Screen** - flip Camera Screen 180 degrees.



**Time Watermark** - turn time stamp On/Off.



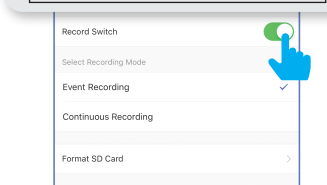
**Audio Mode** - One-Way, Talk and Audio works one way at a time, Two-Way, Talk and Audio works at the same time.



### 16 Select SD Card and Record Setting

From the device Settings, tap **SD Card and Record Settings**.

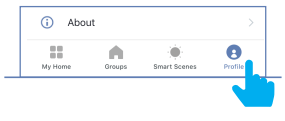
**NOTE:** Maximum MicroSD card storage is 128GB. Do not use a MicroSD card that exceeds this capacity.



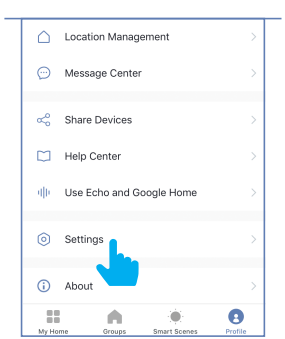
**NOTE:** Make sure **Record Switch** is ON to record video. In **Recording Mode**, choose between **Event Recording** (record only when motion is detected) or **Continuous Recording** (record 24/7).

### 17 Notifications

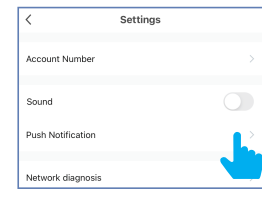
To enable push notifications, exit the control panel then tap **Profile** at the bottom of screen.



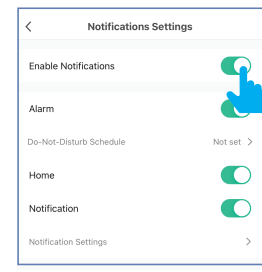
### 18 Tap Settings.



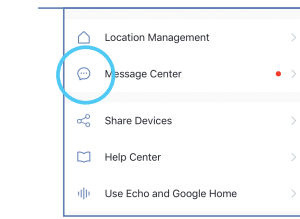
### 19 Tap on Push Notifications.



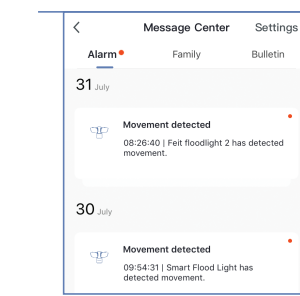
**A** Tap on the toggle button to turn On **Enable Notifications** and receive push notifications.



### 20 Notifications will be stored in the Message Center.

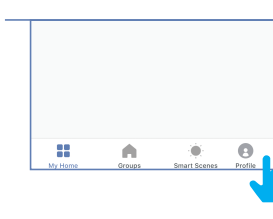


**A** **Message Center** will display your notifications by date.

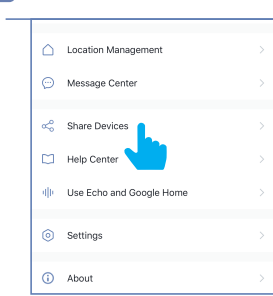


### 21 Device Sharing

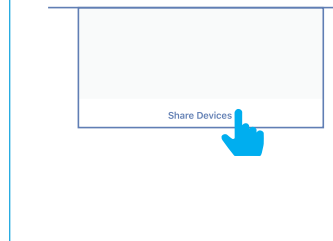
From the Home Page tap **Profile**.



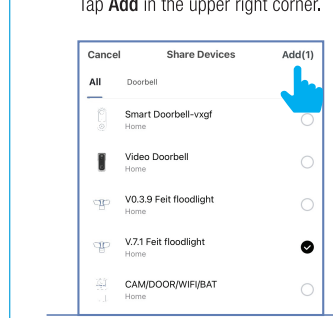
### 22 Tap Share Devices.



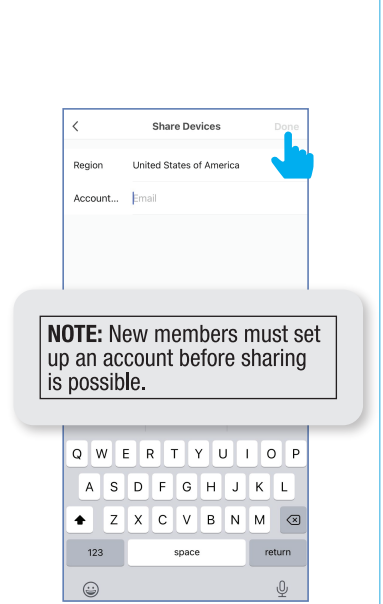
### 23 Tap Share Devices at the bottom.



**24** Select the device that you wish to share. Tap **Add** in the upper right corner.



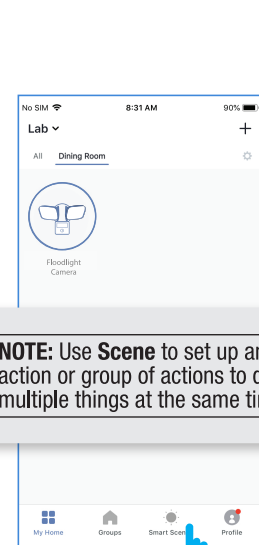
### 25 Enter the email address then tap Done.



**NOTE:** New members must set up an account before sharing is possible.

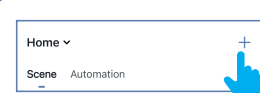
## Smart Scenes

**1** From the **My Home** page, tap **Smart Scenes** at the bottom of screen.

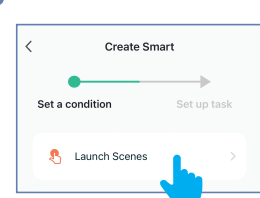


**NOTE:** Use **Scene** to set up an action or group of actions to do multiple things at the same time.

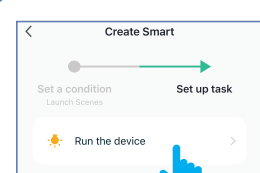
**2** Tap on the **+** icon.



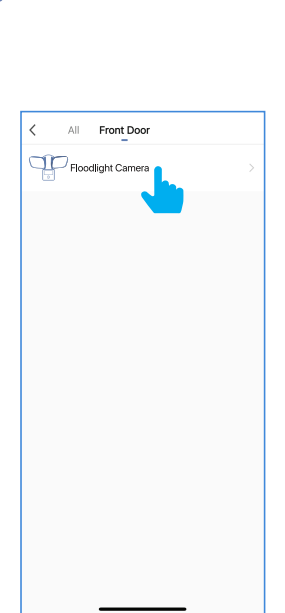
**3** Tap on **Launch Scenes**.



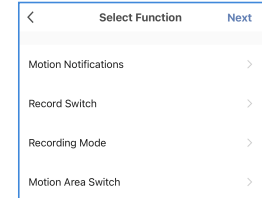
**4** Tap on **Run the device**.



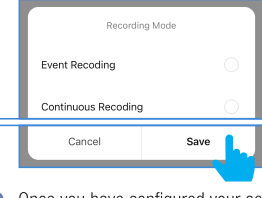
**5** Select your device to execute an action.



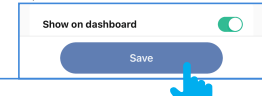
**6** On the **Select Function** screen, tap on the action you want the device to perform.



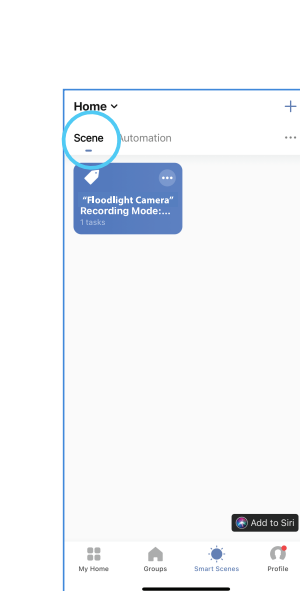
**A** For example, on the **Recording Mode** screen, tap **Event Recording** or **Continuous Recording**, then **Save**.



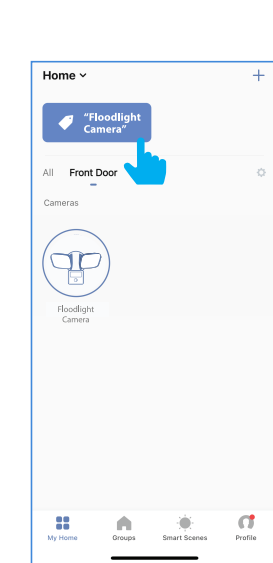
**7** Once you have configured your action(s), tap **Save**.



**8** Your action(s) will appear under **Scene** tab.

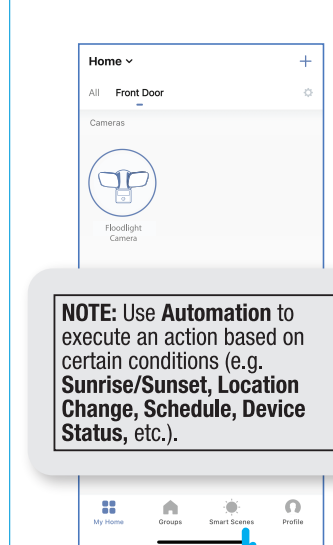


**9** It will also appear on the top of your **My Home** screen. Tap to execute your action(s).



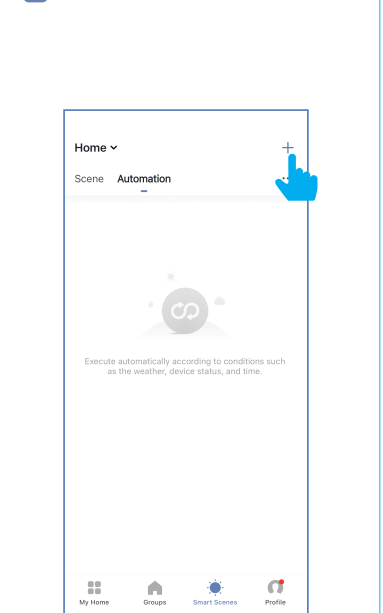
## Automation

**1** From the **My Home** page, tap **Smart Scenes** at the bottom of screen.

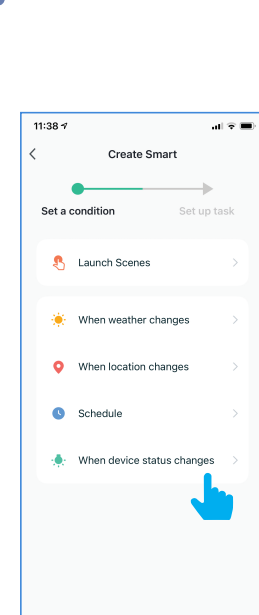


**NOTE:** Use **Automation** to execute an action based on certain conditions (e.g. **Sunrise/Sunset, Location Change, Schedule, Device Status, etc.**).

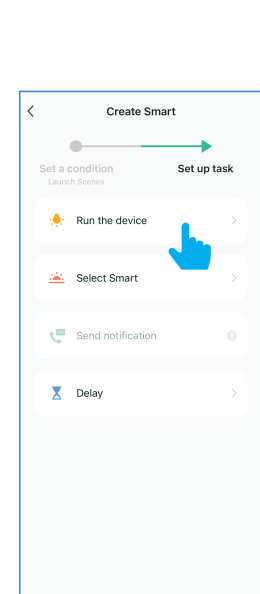
**2** Tap on the **+** icon.



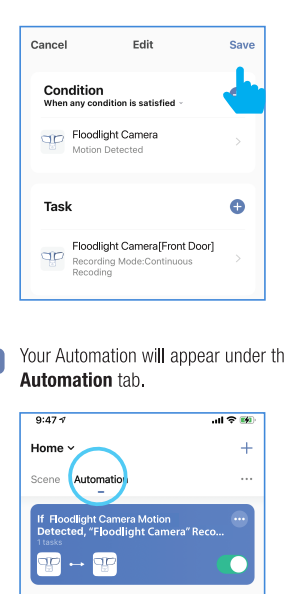
**3** Set a condition you would like to trigger.



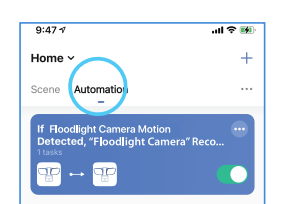
**4** Set up a task you would like to automate.



**5** Review your automations, edit them if necessary, then **Save**.

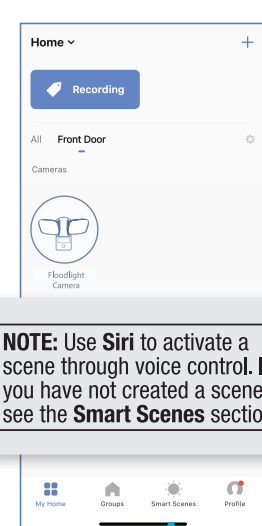


**6** Your Automation will appear under the **Automation** tab.



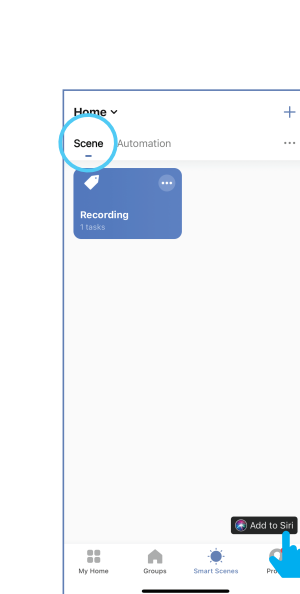
## Enable Siri Shortcuts® (for use with iPhone)

**1** From the **My Home** page, tap **Smart Scenes** at the bottom of screen.

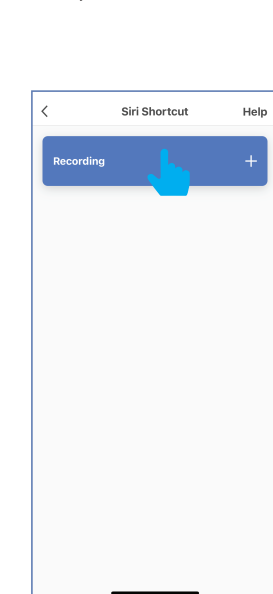


**NOTE:** Use **Siri** to activate a scene through voice control. If you have not created a scene, see the **Smart Scenes** section.

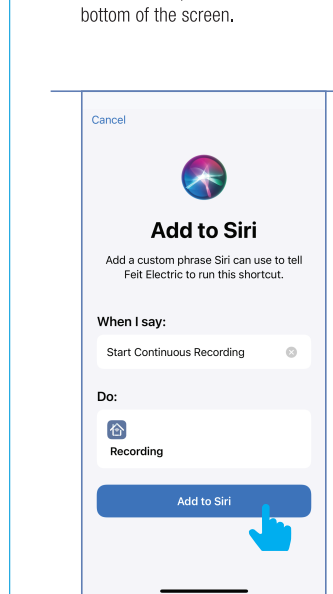
**2** In the **Scene** Tab, tap **Add to Siri** located at the bottom of the screen.



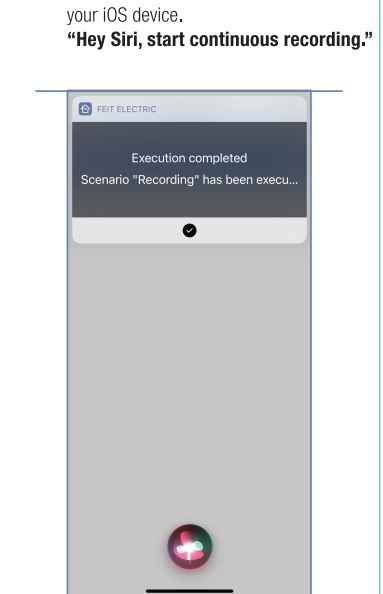
**3** In the **Siri Shortcut** screen, tap on the action you would like to add to **Siri**.



**4** On the **Add to Siri** screen, give it a name, then tap on **Add to Siri** at the bottom of the screen.

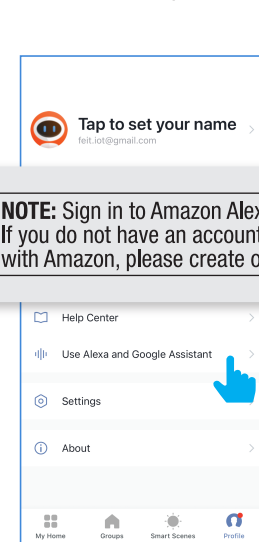


**5** Now you can use the "Hey Siri" command to control this action from your iOS device. **"Hey Siri, start continuous recording."**



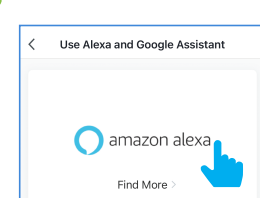
## CONNECT TO ALEXA

**1** Tap on **Profile** at bottom right. Tap on **Use Alexa and Google Assistant**.

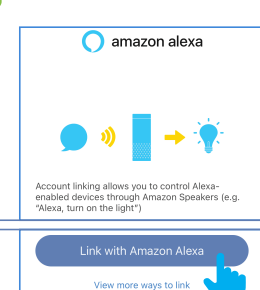


**NOTE:** Sign in to Amazon Alexa. If you do not have an account with Amazon, please create one.

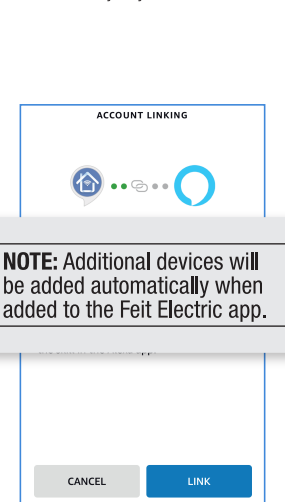
**2** Tap on **Amazon Alexa**.



**3** Tap on **Link with Amazon Alexa**.



**4** Tap on **Link**. You will be linked automatically to your Amazon Alexa app.

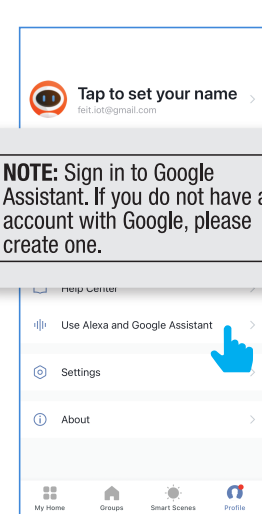


**NOTE:** Additional devices will be added automatically when added to the Feit Electric app.

**5** Once linked, you can ask Alexa to turn on the lights or change dim level, just say **"Alexa, turn Smart Floodlight on."**

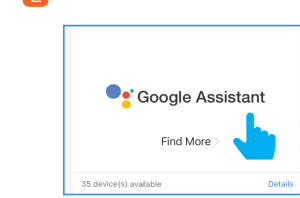
## CONNECT TO GOOGLE ASSISTANT

**1** Tap on **Profile** bottom right. Tap on **Use Alexa and Google Assistant**.

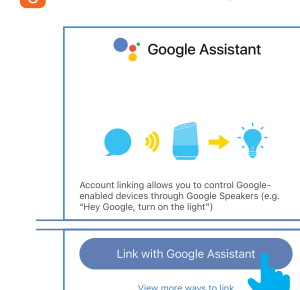


**NOTE:** Sign in to Google Assistant. If you do not have an account with Google, please create one.

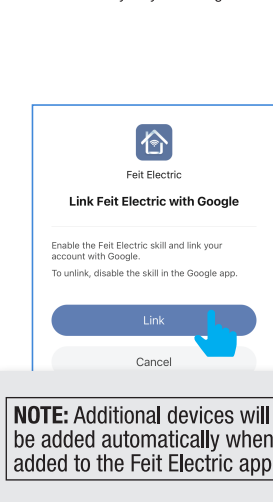
**2** Tap on **Google Assistant**.



**3** Tap on **Link with Google Assistant**.



**4** Tap on **Link**. You will be linked automatically to your Google Assistant app.



**NOTE:** Additional devices will be added automatically when added to the Feit Electric app.

**5** Once linked, you can ask Alexa to turn on the lights or change dim level, just say **"Hey Google, turn Smart Floodlight on."**

## Need Help?

Please refer to our online resources at [www.feit.com/help](http://www.feit.com/help) to learn about more features & latest updates

24/7 HELP [feit.com/help](http://feit.com/help)