

3M™ Eye Protection

Line Card

Featured Series

3M™ SecureFit™



3M™ Solus™1000



3M™ CCS



3M™ Virtua™



3M™ SecureFit™ 500



3M™ SecureFit™
Over-the-Glass



3M™ Solus™ 2000



3M™ GoggleGear™



Features and Lens Colors



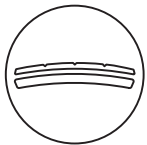
3M™ Pressure Diffusion Temple Technology

Eyewear temples self-adjust to a wide range of head sizes, diffusing pressure over the ear and enhancing comfort.



Adjustable Ratchet Temples

Adjusts the pantoscopic tilt of the lens to help accommodate cheek bone height and improve comfort and fit.



3M™ Scotchgard™ Protector Anti-Fog Coating

Lasts longer than traditional anti-fog coatings and remains effective for up to 25 washings with water. Coating is tested to EN168 N & K for anti-fog and anti-scratch.



Brow Guard

Additional top coverage during impact and leaves room to help airflow.



Foam Gasket

Helps limit eye exposure to debris but not as tight as a goggle.



Goggles

Designed to seal to the face. Can be splash/droplet, dust and/or fine dust rated.



Cord Control System (CCS)

Designed to keep eyewear and earplugs attached, untangled and ready to use.

Lens Colors & Functions



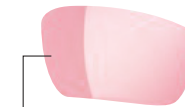
CLEAR

Highest visual acuity and color recognition



POLARIZED

Reduces overall brightness, glare and reflected light



VERMILLION

Helps improve visual acuity and contrast



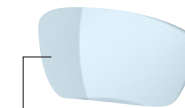
GRAY

Reduces overall brightness of visible light



BROWN

Reduces overall brightness, typically allowing color recognition



BLUE

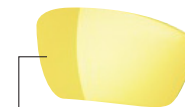
(excl. "sodium blue")

Reduces brightness and glare from yellow light sources. Not intended for use in glass blowing.



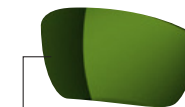
INDOOR/OUTDOOR

Slightly reduces overall brightness of visible light



AMBER

Increases contrast by filtering hazy and blue-colored light



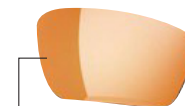
INFRARED FILTERS

Reduces infrared radiation



PHOTOCHROMIC

Darkens when exposed to UV light (outdoors) and lightens when UV light is reduced (indoors)



ORANGE

Reduces blue light in specific applications, e.g., blue light curing

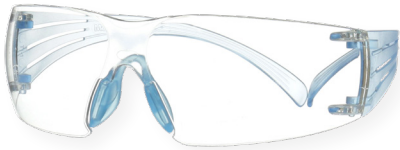


MIRRORED

Reflects light sources, helping reduce brightness



SF201SAF



SF301SGAF-LBL



SF401AF



SF401XSGAF-BLU

Product I.D.	SAP I.D.	Frame Color	Lens Color	Gasket	Browguard	Coating			Each/Case	
						AS	AF/AS	SGAF/AS		
SecureFit™ 200 Series										
SF201AF	7100090435	Clear	Clear				●		20/cs	
SF202AF	7100022210	Gray	Gray				●		20/cs	
SF203AF	7100021793	Amber	Amber				●		20/cs	
SF201SGAF-BLU	7100180044	Blue	Clear					●	20/cs	
SF204SGAF-BLU	7100180046	Blue	Blue					●	20/cs	
Accessory										
RX-SF400	70071731734	3M™ Protective Eyewear Prescription Insert for SecureFit™ 200								10/cs
SecureFit™ 300 Series										
SF301AF	7010315373	Clear	Clear				●		20/cs	
SF302AF	7010342616	Clear	Gray				●		20/cs	
SF301SGAF-LBL	7100202277	Ice Blue	Clear					●	20/cs	
SF302SGAF-LBL	7100202278	Ice Blue	Gray					●	20/cs	
Accessory										
RX-SF400	70071731734	3M™ Protective Eyewear Prescription Insert for SecureFit™ 300								10/cs
SecureFit™ 400 Series										
SF401AF	7100112435	Green/Black	Clear				●		20/cs	
SF401AF-FM	7100112131	Green/Black	Clear	●			●		20/cs	
SF402AF	7100112433	Green/Black	Gray				●		20/cs	
SF402AF-FM	7100112244	Green/Black	Gray	●			●		20/cs	
SF410AS-FM	7100112223	Green/Black	I/O Mirror	●		●			20/cs	
SF401SGAF-BLU	7100150838	Blue/Black	Clear					●	20/cs	
SF401SGAF-BLU-F	7100156104	Blue/Black	Clear	●				●	20/cs	
SF402SGAF-BLU	7100156101	Blue/Black	Gray					●	20/cs	
SF402SGAF-BLU-F	7100156137	Blue/Black	Gray	●				●	20/cs	
SF403SGAF-YEL	7100158219	Yellow/Black	Amber					●	20/cs	
SF405SGAF-BLA	7100155940	Brown/Black	Brown					●	20/cs	
SF406SGAF-BLA	7100158220	Brown/Black	Orange					●	20/cs	
SF407SGAF-BLU	7100156103	Blue/Black	I/O Gray					●	20/cs	
SF401XAF-GRN	7100180045	Green/Black	Clear		●		●		20/cs	
SF401XSGAF-BLU	7100180049	Blue/Black	Gray		●			●	20/cs	
SF402XAF-GRN	7100180047	Green/Black	Gray		●		●		20/cs	
SF402XSGAF-BLU	7100180050	Blue/Black	Gray		●			●	20/cs	
SF403XSGAF-YEL	7100179972	Yellow/Black	Amber		●			●	20/cs	
SF407XSGAF-BLU	7100180051	Blue/Black	I/O Gray		●			●	20/cs	
Readers										
SF415AF, +1.5 Diopter	7100115326	Green/Black	Clear				●		20/cs	
SF420AF, +2.0 Diopter	7100115325	Green/Black	Clear				●		20/cs	
SF425AF, +2.5 Diopter	7100115329	Green/Black	Clear				●		20/cs	
Accessory										
RX-SF400	70071731734	3M™ Protective Eyewear Prescription Insert for SecureFit™ 400								10/cs
SF-FOAM	7100112132	Replacement Foam Gasket								20/bag



SF501AF-BLK

Product I.D.	SAP I.D.	Frame Color	Lens Color	Foam Gasket	Coating			Each/Case
					AS	AF/AS	SGAF/AS	
SecureFit™ 500 Series								
SF501AF-BLK	7100239194	Black	Clear			●		20/cs
SF501SGAF-BLK-FM	7100238909	Black	Clear	●			●	20/cs
SF501SGAF-BLK	7100238910	Black	Clear				●	20/cs
SF502AF-BLK	7100238909	Black	Gray			●		20/cs
SF502SGAF-BLK-FM	7100239195	Black	Gray	●			●	20/cs
SF502SGAF-BLK	7100239089	Black	Gray				●	20/cs
SF503SGAF-BLK	7100239090	Black	Amber				●	20/cs
SF505SGAF-DGR	7100239088	Olive Green	Brown				●	20/cs
SF507SGAF-BLK	7100239091	Black	I/O Gray				●	20/cs
SF507AF-BLK	7100239092	Black	I/O Gray			●		20/cs
SF507SGAF-BLK-FM	7100239191	Black	I/O Gray	●			●	20/cs
SF509AF-BLK	7100239203	Black	Silver Mirror			●		20/cs
SF528SGAF-DGR	7100239191	Olive Green	Light Brown				●	20/cs
IR Shades								
SF517AF-GRN	7100239204	Green & Black	IR 1.7 Gray			●		20/cs
SF530AF-GRN	7100239086	Green & Black	IR 3.0 Gray			●		20/cs
SF550AF-GRN	7100239205	Green & Black	IR 5.0 Gray			●		20/cs
Accessory								
SF500-FOAM	7100239114	500 Series Replacement Foam Gasket						10/pk, 12 pk/cs

3M™ SecureFit™ 600 Eye Protection

3M™ Safety Glasses



SF601SGAF

Product I.D.	SAP I.D.	Frame Color	Lens Color	Strap	Gasket	Coating		SGAF/ AS	Each/ Case	
						AS	AF/AS			
SecureFit™ 600 Series										
SF601SGAF	7100128689	Gray	Clear					●	20/cs	
SF601SGAF-FM	7100133322	Gray	Clear		●			●	20/cs	
SF602SGAF	7100128690	Gray	Gray					●	20/cs	
SF602SGAF-FM	7100132350	Gray	Gray		●			●	20/cs	
SF603SGAF	7100141599	Gray	Amber					●	20/cs	
SF607SGAF	7100132351	Gray	I/O Gray					●	20/cs	
Readers										
SF615SGAF, +1.5 Diopter	7100132357	Gray	Clear					●	20/cs	
SF620SGAF, +2.0 Diopter	7100132359	Gray	Clear					●	20/cs	
SF625SGAF, +2.5 Diopter	7100132360	Gray	Clear					●	20/cs	
Accessory										
SF600FI	7100132738	600 Series Replacement Foam Gasket								20/bag



S1201SGAF



S1201SGAF-KT



S1201SGAF-TSKT

Product I.D.	SAP I.D.	Frame Color	Lens Color	Strap	Gasket	Coating			Each/Case	
						AS	AF/AS	SGAF/AS		
Accessory										
Solus™ 1000 Series										
S1101SGAF	7100079183	Blue/Black	Clear					●	20/cs	
S1102SGAF	7100079184	Blue/Black	Gray					●	20/cs	
S1103SGAF	7100079185	Blue/Black	Amber					●	20/cs	
S1107SGAF	7100131794	Blue/Black	I/O					●	20/cs	
S1201SGAF	7100079049	Green/Black	Clear					●	20/cs	
S1202SGAF	7100079180	Green/Black	Gray					●	20/cs	
S1203SGAF	7100079181	Green/Black	Amber					●	20/cs	
S1207SGAF	7100127035	Green/Black	I/O					●	20/cs	
S1401SGAF	7100181053	Pink/Black	Clear					●	20/cs	
S1402SGAF	7100181054	Pink/Black	Gray					●	20/cs	
S1407SGAF	7100168177	Pink/Black	I/O Gray					●	20/cs	
S1501SGAF	7100220751	Black	Clear					●	20/cs	
S1502SGAF	7100221210	Black	Gray					●	20/cs	
S1507SGAF	7100220752	Black	I/O Gray					●	20/cs	
Solus™ 1000 Series - Kits - Comes assembled with temples and foam gasket attached										
S1101SGAF-KT	7100079186	Blue/Black	Clear	●	●			●	20/cs	
S1102SGAF-KT	7100105846	Blue/Black	Gray	●	●			●	20/cs	
S1107SGAF-KT	7100131819	Blue/Black	I/O	●	●			●	20/cs	
S1201SGAF-KT	7100079182	Green/Black	Clear	●	●			●	20/cs	
S1202SGAF-KT	7010341346	Green/Black	Gray	●	●			●	20/cs	
S1502SGAF-KT	7100221211	Black	Gray	●	●			●	20/cs	
S1521SGAF-KT	7100221212	Black	I/O Vermillion	●	●			●	20/cs	
S1523SGAF-KT	7100221243	Black	Vermillion	●	●			●	20/cs	
Solus™ 1000 TPE										
Solus™ TPE Series Kits - Comes assembled with temples and TPE gasket attached. Strap included.										
S1201SGAF-TKT	7100233038	Green/Black	Clear	●	●			●	20/cs	
S1202SGAF-TKT	7100232887	Green/Black	Gray	●	●			●	20/cs	
S1207SGAF-TKT	7100232856	Green/Black	I/O Gray	●	●			●	20/cs	
Solus™ TPE Series - Comes assembled with TPE gasket and strap attached. Temples not included.										
S1201SGAF-TSKT	7100234544	Green/Black	Clear	●	●			●	20/cs	
S1202SGAF-TSKT	7100235154	Green/Black	Gray	●	●			●	20/cs	
S1207SGAF-TSKT	7100235153	Green/Black	I/O Gray	●	●			●	20/cs	
Accessories										
Solus-Strap	7100085458	Solus™ Replacement Strap								10/bag
Solus-Foam	7100079749	Solus™ Replacement Foam Gasket								10/bag
S1000-CASE	7100228822	Solus™ Carrying Case								10/box
S1000-RX	7100234547	Solus™ Prescription Insert								10/box



S2001SGAF-BGR



S2030AS-BLK



S2015AF-BLU



12261-00000-20

Product I.D.	SAP I.D.	Frame Color	Lens Color	Foam Gasket	Coating			Each/Case
					AS	AF/AS	SGAF/AS	
Solus™ 2000 Series								
S2001SGAF-BGR	7100203178	Gray/Teal	Clear				●	20/cs
S2002SGAF-BGR	7100203287	Gray/Teal	Gray				●	20/cs
S2003SGAF-BGR	7100203164	Gray/Teal	Amber				●	20/cs
S2005SGAF-BGR	7100203166	Gray/Teal	Brown				●	20/cs
S2007SGAF-BGR	7100203171	Gray/Teal	I/O Gray				●	20/cs
S2001SGAF-BGR-F	7100203183	Gray/Teal	Clear	●			●	20/cs
S2002SGAF-BGR-F	7100259420	Gray/Teal	Gray	●			●	20/cs
S2003SGAF-BGR-F	7100259422	Gray/Teal	Amber	●			●	20/cs
S2005SGAF-BGR-F	7100259421	Gray/Teal	Brown	●			●	20/cs
S2007SGAF-BGR-F	7100259423	Gray/Teal	I/O Gray	●			●	20/cs
S2008AS-CLR	7100221706	Clear/Blue	Blue Mirror		●			20/cs
S2024AS-RED	7100203162	Gray/Red	Red Mirror		●			20/cs
Solus™ 2000 Series IR Shade Models								
S2017AS-BLK	7100203187	Black/Green	1.7 Gray		●			20/cs
S2030AS-BLK	7100203188	Black/Green	3.0 Gray		●			20/cs
S2050AS-BLK	7100203186	Black/Green	5.0 Gray		●			20/cs
Solus™ 2000 Series Readers								
S2015AF-BLU, +1.5 Diopter	7100221704	Blue/Gray	Clear				●	20/cs
S2020AF-BLU, +2.0 Diopter	7100222269	Blue/Gray	Clear				●	20/cs
S2025AF-BLU, +2.5 Diopter	7100222135	Blue/Gray	Clear				●	20/cs
Privo™ Series								
12261-00000-20	7000127535	Black/Orange	Clear				●	20/cs
12262-00000-20	7000127536	Black/Orange	Gray				●	20/cs
12263-00000-20	7000052818	Black/Orange	Amber				●	20/cs
12264-00000-20	7000127537	Black/Orange	I/O				●	20/cs





SCCS01SGAF-GRN-F



11872-00000-20

Product I.D.	SAP I.D.	Frame Color	Lens Color	Foam Gasket	Coating			Each/Case
					AS	AF/AS	SGAF/AS	
Solus™ CCS Series								
SCCS01SGAF-GRN	7100196396	Green	Clear				●	20/cs
SCCS02SGAF-GRN	7100196395	Green	Gray				●	20/cs
SCCS07SGAF-GRN	7100196394	Green	I/O Gray				●	20/cs
SCCS01SGAF-GRN-F	7100196393	Green	Clear	●			●	20/cs
SCCS02SGAF-GRN-F	7100196397	Green	Gray	●			●	20/cs
SCCS07SGAF-GRN-F	7100196398	Green	I/O Gray	●			●	20/cs
Virtua™ CCS Series								
11796-00000-20	7010340677	Blue	Clear			●		20/cs
11798-00000-20	7010384246	Gray	Gray			●		20/cs
11872-00000-20	7000128259	Blue	Clear	●		●		20/cs
11873-00000-20	7000128260	Gray	Gray	●		●		20/cs
11874-00000-20	7000128261	Blue	I/O Mirror	●		●		20/cs
Virtua™ CCS Series Readers								
VC215AF, +1.5 Diopter	7100046796	Blue	Clear	●		●		20/cs
VC220AF, +2.0 Diopter	7100046672	Blue	Clear	●		●		20/cs
VC225AF, +2.5 Diopter	7100046673	Blue	Clear	●		●		20/cs
Accessory								
VCRG1	7010316613	Virtua™ CCS Replacement Gasket						10/bag



11818-00000-20



11329-00000-20



SF101AF-BLK

Product I.D.	SAP I.D.	Frame Color	Lens Color	Coating			Each/Case
				AS	AF/AS	SGAF/AS	
Virtua™ AP Series							
11815-00000-20	7000030050	Gray	Gray	●			20/cs
11816-00000-20	7000030051	Light Blue	Light Blue	●			20/cs
11817-00000-20	7000030052	Amber	Amber	●			20/cs
11818-00000-20	7000030053	Clear	Clear		●		20/cs
11819-00000-20	7000030054	Clear	Clear	●			20/cs
11847-00000-20	7000030055	Mirror	I/O Mirror	●			20/cs
11848-00000-20	7010342193	Gray	Gray		●		20/cs
Virtua™ Series							
11228-00000-100	7100114652	Clear	Clear				100/cs
11326-00000-100	7100110886	Clear	Clear	●			100/cs
11326-00000-20	7100109223	Clear	Clear	●			20/cs
11327-00000-20	7100114636	Gray	Gray	●			20/cs
11328-00000-20	7100123356	Clear	I/O	●			20/cs
11329-00000-100	7010315357	Clear	Clear		●		100/cs
11329-00000-20	7100112434	Clear	Clear		●		20/cs
11330-00000-20	7010386340	Gray	Gray		●		20/cs
Virtua™ Series Readers							
11513-00000-20, +1.5 Diopter	7000127511	Clear	Clear		●		20/cs
11514-00000-20, +2.0 Diopter	7000127512	Clear	Clear		●		20/cs
11515-00000-20, +2.5 Diopter	7000127513	Clear	Clear		●		20/cs
SecureFit™ 100 Series							
SF101AF-BLK	7100238175	Black	Clear		●		100/cs
SF101AS-BLK	7100238171	Black	Clear	●			100/cs
SF101AF-BLK	7100238174	Black	Clear		●		20/cs
SF101AS-BLK	7100238173	Black	Clear	●			20/cs
SF102AF-BLK	7100238172	Black	Gray		●		20/cs
SF103AF-BLK	7100238183	Black	Amber		●		20/cs
SF107AF-BLK	7100238257	Black	Indoor/Outdoor Gray		●		20/cs

3M™ Over-the-Glass (OTG) Eye Protection

3M™ Safety Glasses



SF3701SGAF-BLU

Product I.D.	SAP I.D.	Frame Color	Lens Color	Brow Guard	Coating			Each/Case
					AS	AF/AS	SGAF/AS	
SecureFit™ 3700 Series								
SF3701SGAF-BLU	7100203179	Blue	Clear				●	10/cs
SF3701AS-BLU	7100203180	Blue	Clear		●			10/cs
SF3702SGAF-BLU	7100203203	Blue	Gray				●	10/cs
SF3702AS-BLU	7100203175	Blue	Gray		●			10/cs
SF3703SGAF-GRN	7100203192	Green	Amber				●	10/cs
SF3704SGAF-BLU	70071732138	Blue	Blue				●	10/cs
SF3706AS-GRY	70071732161	Gray	Orange		●			10/cs
SF3707SGAF-BLU	7100203165	Blue	I/O Gray				●	10/cs
SF3707AS-BLU	7100203195	Blue	I/O Gray		●			10/cs
SF3717AS-BLK	70071732112	Black	IR 1.7 Gray		●			10/cs
SF3730AS-BLK	70071732120	Black	IR 3.0 Gray		●			10/cs
SF3750AS-BLK	70071732146	Black	IR 5.0 Gray		●			10/cs
SF3701XSGAF-BLU	7100203198	Blue	Clear	●			●	10/cs

3M™ Maxim™ Elite Eye Protection



MXE1001SGAF-BLK

Product I.D.	SAP I.D.	Frame Color	Lens Color	Coating			Each/Case
				AS	AF/AS	SGAF/AS	
Maxim™ Elite 1000 Series							
MXE1001SGAF-BLK	7100222265	Black	Clear			●	20/cs
MXE1002SGAF-BLK	7100222266	Black	Gray			●	20/cs
MXE1007SGAF-BLK	7100222268	Black	I/O Gray			●	20/cs
MXE1029AF-BLK	7100222270	Black	Blue-Violet Mirror		●		20/cs

3M™ Goggles

3M™ Safety Goggles



GG2891-SGAF



GG501SGAF



GG6001SGAF-BLK

Product I.D.	SAP I.D.	Frame Color	Lens Color	Splash/ Dust Rating	D3/ D4 rated	D5 rated	Coating				Each/Case
							U	AS	AF/AS	SGAF/ AS	
GoggleGear™ 2890 Series											
GG2891-SGAF	7010386529	Gray	Clear		●					●	10/cs
GG2891S-SGAF	7010302104	Gray	Clear		●	●				●	10/cs
GG2892-SGAF	7010386491	Gray	Gray		●					●	10/cs
GoggleGear™ 500 Series											
GG501SGAF	7100079187	Gray/ Red	Clear		●					●	10/cs
GG501NSGAF	7100112956	Gray/Red	Clear	●	●					●	10/cs
GG502SGAF	7100168468	Gray/Red	Gray		●					●	10/cs
Accessories											
GG500-PI	7100084923	GoggleGear™ 500 Series Prescription Insert									10/cs
GG500-NeoStrap	7010316627	GoggleGear™ 500 Series Replacement Neoprene Strap									10/cs
GG500-ClothStrap	7010341344	GoggleGear™ 500 Series Replacement Cloth Strap									10/cs
GoggleGear™ 6000 Series											
GG6001SGAF-BLK	7100191924	Black	Clear		●					●	10/cs
GG6002SGAF-BLK	7100191930	Black	Gray		●					●	10/cs
GG6001NSGAF-BLU	7100191928	Blue	Clear	●	●					●	10/cs
Accessory											
GG6001SGAF-LENS	7100191927	GoggleGear™ 6000 Series SGAF/AS Clear Replacement Lens									30/cs

Additional Models

Product I.D.	SAP I.D.	Frame Color	Lens Color	Brow Bar, Side Shields	AS	AF/AS Coating	Each/Case
Nuvo™							
11411-00000-20	7000127497	Gray	Clear	●		●	20/cs
Nuvo™ Readers							
11434-00000-20, +1.5 Diopter	7000052797	Gray	Clear	●		●	20/cs
11435-00000-20, +2.0 Diopter	7000052798	Gray	Clear	●		●	20/cs
11436-00000-20, +2.5 Diopter	7000052799	Gray	Clear	●		●	20/cs
Tour-Guard™ V Series							
TGV01-100	7100086111	Clear	Clear		●		100/cs
TGV01-20	7100089472	Clear	Clear		●		20/cs
OX™							
12166-00000-20	7000002373	Black	Clear			●	20/cs

Product I.D.	SAP I.D.	Frame Color	Lens Color	AF/AS Coating	Each/Case
BX™					
11380-00000-20	7000052795	Silver/Black	Clear	●	20/cs
11381-00000-20	7000052796	Silver/Black	Gray	●	20/cs
BX™ Readers					
11374-00000-20, +1.5 Diopter	7000127490	Silver/Black	Clear	●	20/cs
11375-00000-20, +2.0 Diopter	7000052794	Silver/Black	Clear	●	20/cs
11376-00000-20, +2.5 Diopter	7000127491	Silver/Black	Clear	●	20/cs
11377-00000-20, +1.5 Diopter	7000127492	Silver/Black	Gray	●	20/cs
11378-00000-20, +2.0 Diopter	7000127493	Silver/Black	Gray	●	20/cs
11379-00000-20, +2.5 Diopter	7000127494	Silver/Black	Gray	●	20/cs
BX™ Dual Readers					
11457-00000-20, +1.5 Diopter	7000127661	Silver	Clear	●	20/cs
11458-00000-20, +2.0 Diopter	7000127662	Silver	Clear	●	20/cs
11459-00000-20, +2.5 Diopter	7000127663	Silver	Clear	●	20/cs

Product I.D.	SAP I.D.	Frame Color	Lens Color	D3/D4 rated	Coating				Each/Case
					U	AS	AF/AS	SGAF/AS	
Centurion™									
40300-00000-10	7000127564	Clear	Clear		●				10/cs
40301-00000-10	7100009575	Clear	Clear				●		10/cs
40304-00000-10	7000127565	Clear	Clear	●	●				10/cs
40305-00000-10	7000002377	Clear	Clear	●			●		10/cs
332									
40650-00000-10	7010340634	Clear	Clear		●				10/cs
40651-00000-10	7000030007	Clear	Clear				●		10/cs
334									
40660-00000-10	7000052836	Clear	Clear	●	●				10/cs
40661-00000-10	7000002378	Clear	Clear	●			●		10/cs
Modul-R™ — Impact visor attachment									
40658-00000-10	7000030008	Clear	Clear				●		10/cs

KEY U: Uncoated, AS: Anti-Scratch, AF/AS: Anti-Fog/Anti-Scratch, SGAF/AS: Scotchgard™ Protector Anti-Fog Coating/Anti-Scratch Lens



Personal Safety Division, 3M Center, Building 235-2W-70, St. Paul, MN 55144-1000 U.S.A.
 Technical Assistance 1-800-243-4630, Customer Service 1-800-328-1667
3M.com/ProtectiveEyewear



WARNING: These eye or face protection products help provide limited eye and face protection. Misuse or failure to follow warning and instruction may result in serious potential injury, including blindness or death. For proper use, selection, and applications against flying particles, optical radiation and/or splash see supervisor, read User Instructions and warning on the package or call 3M PSD Technical Service in the USA at 1-800-243-4630. In Canada, call 1-800-267-4414. **3M PSD products are for occupational use only.**

© 3M 2022. All rights reserved. 3M, BX, Centurion, GoggleGear, Maxim, Modul-R, Nuvo, OX, Scotchgard, SecureFit, Solus, Tour-Guard and Virtua are trademarks of 3M. Please recycle. Printed in U.S.A.