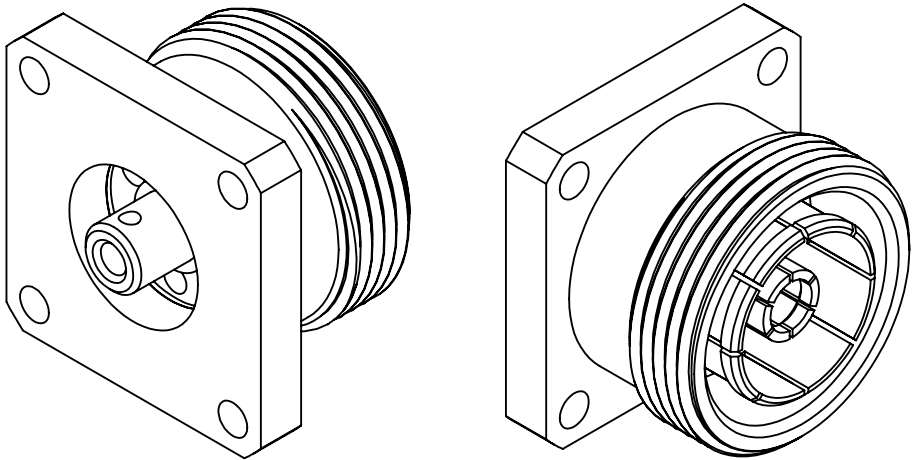


This document, including the design, configuration and mechanical features revealed herein are the sole, confidential and proprietary property of TRU Corporation. Reproduction or use thereof, in whole or part, is prohibited without the prior written consent of TRU Corporation.

REV.	DESCRIPTION	DATE	APPROVED
-	ORIGINAL ISSUE	01/15/14	AM



ENGINEERING DATA

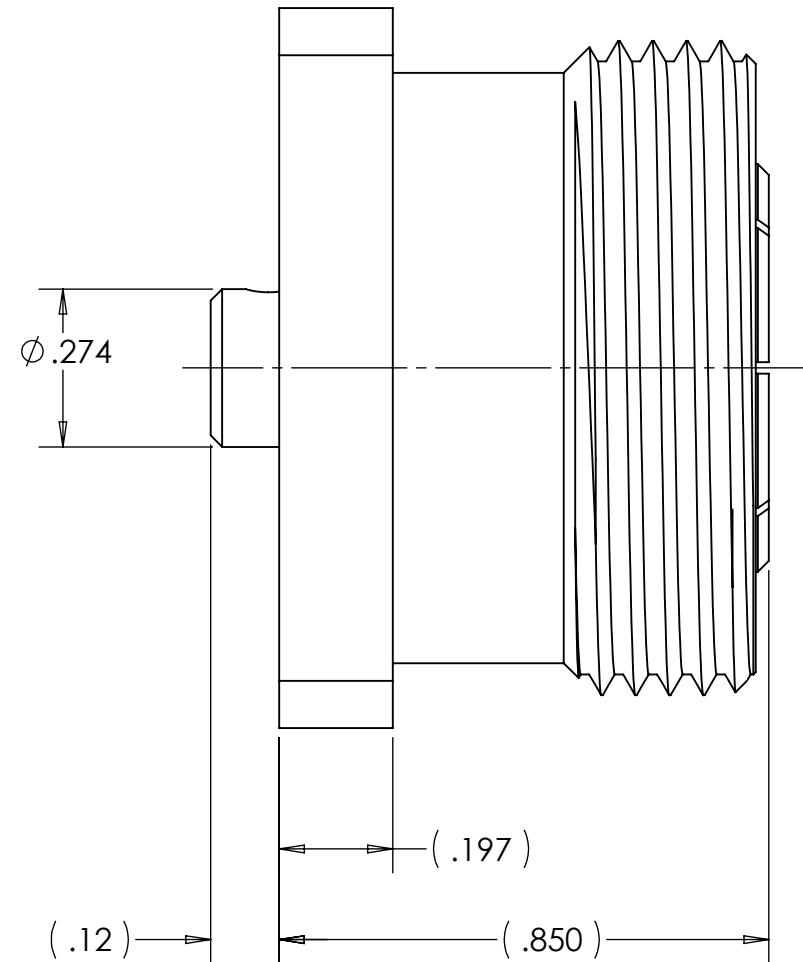
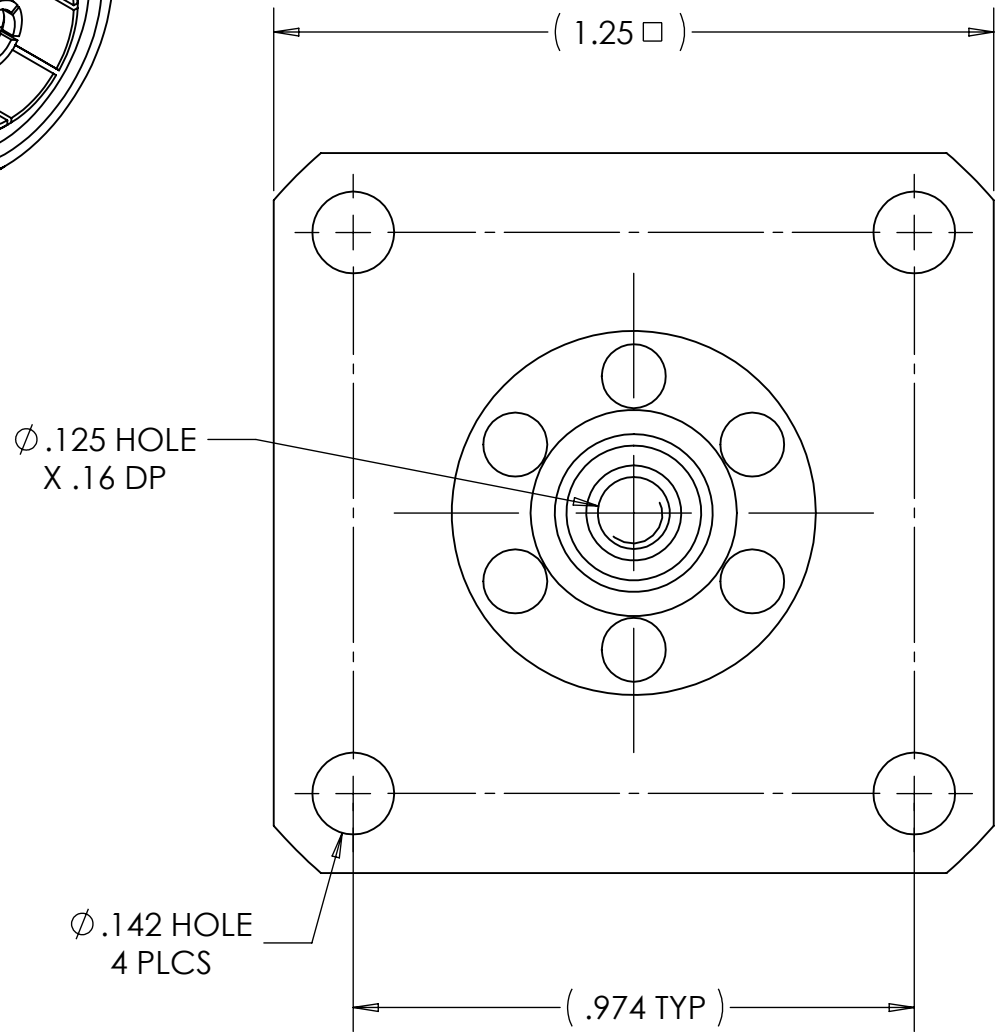
ELECTRICAL:  
IMPEDANCE: 50 OHMS NOMINAL  
FREQUENCY RANGE: DC to 6 GHz  
POWER RATING: 2 kW CW @ 4.2 GHz, sea level,  
room temp, 3:1 VSWR max load



MECHANICAL:  
INTERFACE: 7-16(f) per IEC 169-4

MATERIAL:  
CONTACTS: BRASS & BERYLLIUM COPPER  
INSULATOR: FLUOROLOY H  
CONTACT FINGERS: PHOSPHOR BRONZE  
HOUSING: BRASS

FINISH:  
CONTACTS: TRULUSTRE PLATING  
CONTACT FINGERS: TRULUSTRE PLATING  
HOUSING: TRULUSTRE PLATING

NOTES:  
1. UNLESS OTHERWISE SPECIFIED; ALL DIMENSIONS  
ARE FOR REFERENCE ONLY.



MATERIAL	DO NOT SCALE DRAWING		DRAWN AM	DATE 01/13/14	 <b>TRU Corporation</b> 245 Lynnfield St, Peabody, MA 01960 <small>EXPERIENCE. TRU INNOVATION.</small>		
	UNLESS OTHERWISE SPECIFIED: DIMENSIONS ARE IN INCHES		ENG APPR. AM	DATE 01/14/14			
	TOLERANCES: FRACTIONS: ± 1/64 .XX : ±.01 .XXX: ±.005 ANGLES: ± 1/2° MACHINED SURFACES: <div>63/√</div>		MFG APPR.	DATE	TITLE:  CONNECTOR, COAXIAL 7-16(f) PANEL RECEPTACLE		
			OTHER APPR.	DATE			
COMMENTS:		THIRD ANGLE PROJECTION 		SIZE <b>B</b>	DWG. NO.  TRU-12587		REV  -
surface area: sq inch				CAGE CODE: 92180		SCALE: 3:1	SHEET 1 OF 1
weight: lbs							