

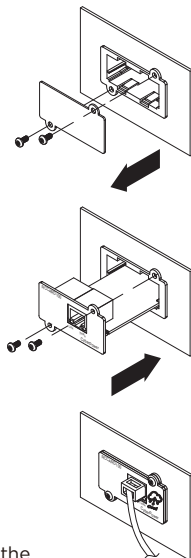
## REMOTE CLOUD CARD RCCARD100

### Quick Start Guide

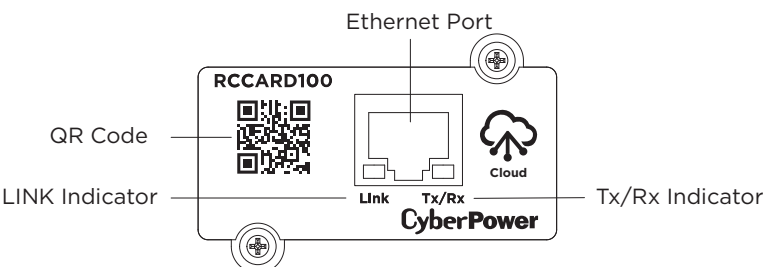
#### INSTALLATION GUIDE

##### Step 1. Hardware Installation

1. Remove the two retaining screws from the expansion slot, and remove the cover.
2. Install the Remote Cloud Card into the expansion slot.
3. Insert and tighten the retaining screws.
4. Connect an Ethernet cable to the Ethernet port of the Remote Cloud Card.



**NOTE:** The Remote Wireless Cloud Card is hot-swappable, so you do not need to turn off the device to install it.



1

#### Definitions for the LED Indicators

Link LED color	Condition
Off	The Remote Cloud Card is not connected to the Network/ or the Remote Cloud Card power is off.
On (Yellow)	The Remote Cloud Card is connected to the Network.
Tx/Rx LED color	
Off	The Remote Cloud Card power is off.
On (Green)	The Remote Cloud Card power is on.
Flashing	- Receiving/transmitting data packet - Reset finished

##### Step 2. Application Installation

Install the "POWERPANEL" application available for download on the Apple App Store or Google Play, then launch the application.

iOS



Android



##### Step 3. Sign Up and Login, as shown in Figure 1

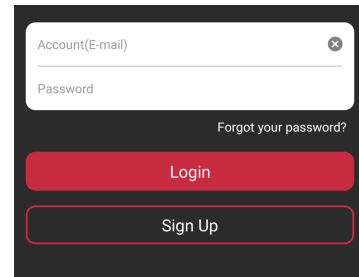


Figure 1

2

##### Step 4. Add a device in the POWERPANEL app

1. Click "+" in the upper right corner of the homepage, as shown in Figure 2.

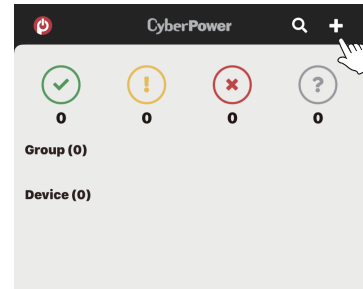


Figure 2

2. Locate the "Add Device by QR Code" to add your Remote Cloud Card.
3. Scan the QR Code on the Remote Cloud Card you are adding. If the QR Code scan was successful, click "Add" and name the device you are monitoring.
4. After the setup is completed, you will see your device on the homepage, as shown in Figure 3.

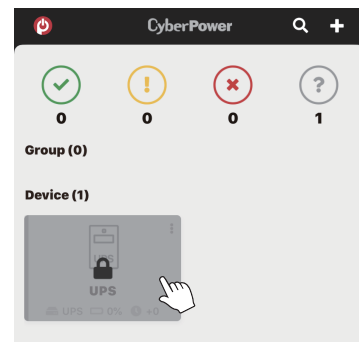


Figure 3

3

5. Wait till the UPS is successfully configured, as shown in Figure 4.

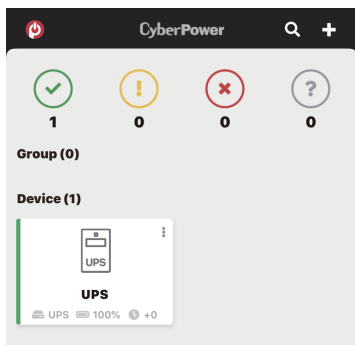


Figure 4

### Step 5. Start monitoring your UPS!

In addition to the app, you can access the PowerPanel® Cloud account via a web browser: <https://powerpanel.cyberpower.com>  
For more information, please refer to the PowerPanel® Cloud User's Manual.

## CONFORMANCE APPROVALS

### FCC Statement:

This device complies with part 15 of the FCC Rules. Operation is subject to the following two conditions:

- (1) This device may not cause harmful interference, and
- (2) this device must accept any interference received, including interference that may cause undesired operation.

**Warning:** Changes or modifications to this unit not expressly approved by the party responsible for compliance could void the user's authority to operate the equipment.

**NOTE:** This equipment has been tested and found to comply with the limits for a Class B digital device, pursuant to part 15 of the FCC Rules. These limits are designed to provide reasonable protection against harmful interference in a residential installation. This equipment generates, uses and can radiate radio frequency energy and, if not installed and used in accordance with the instructions, may cause harmful interference to radio communications. However, there is no guarantee that interference will not occur in a particular installation. If this equipment does cause harmful interference to radio or television reception, which can be determined by turning the equipment off and on, the user is encouraged to try to correct the interference by one or more of the following measures:

- Reorient or relocate the receiving antenna.
- Increase the separation between the equipment and receiver.
- Connect the equipment into an outlet on a circuit different from that to which the receiver is connected.
- Consult the dealer or an experienced radio/TV technician for help.

### Canadian Compliance Statement

CAN ICES-3 (B)/NMB-3(B)



### Disposal

The Waste Electrical and Electronic Equipment (WEEE) Directive aims to contribute to sustainable production and consumption by contributing to the efficient use of resources and the retrieval of secondary raw materials through re-use, recycling and other forms of recovery. The symbol on this product and/or its packaging indicates that the product must be disposed of separately from ordinary household wastes at its end of life. Contact your related WEEE management authority, local office, or your household waste disposal service about information on the recycling drop off site.

4

6

## FIRMWARE UPGRADE

Keep your RCCARD100 up to date with the newest features and improvements. Ensure your RCCARD100 has the latest version of firmware by selecting access "Device Setting" / "Card Firmware Update" in the PowerPanel® App or the PowerPanel® Cloud web browser periodically to check for updates, as show in Figure 5 and 6.

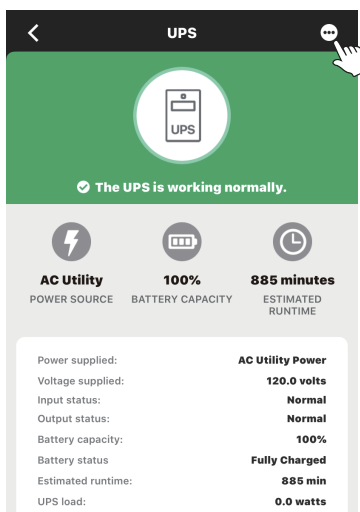


Figure 5

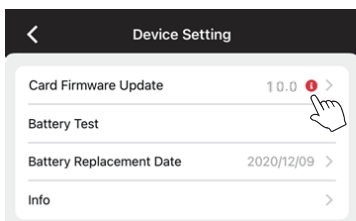


Figure 6

5

# CyberPower

[www.cyberpower.com](http://www.cyberpower.com)

Europe, Northern Ireland  
**Cyber Power Systems B.V.**

Flight Forum 3545, 5657DW Eindhoven, The Netherlands  
Tel: +31 40 2348170 | Fax: +31 40 2340314  
Email: [eu.service@cyberpower.com](mailto:eu.service@cyberpower.com)

Austria, Germany, Switzerland  
**Cyber Power Systems GmbH**

Edisonstrasse 16, 85716 Unterschleissheim, Germany  
Telefon: +49 89 1 222 166 0 | Fax: +49 89 1 222 166 29  
Email: [de.service@cyberpower.com](mailto:de.service@cyberpower.com)

France  
**Nitram S.A.**

Z.I. Saint-Séverin, B.P. 36, 28220 CLOYES, FRANCE  
Tél : +33 2 37 98 61 50 | Fax: +33 2 37 98 60 04  
E-mail: [infos@nitram.fr](mailto:infos@nitram.fr)

United States, Canada  
**Cyber Power Systems (USA), Inc.**

4241 12th Avenue East, Suite 400, Shakopee, MN 55379  
Toll-free: +1 877 297 6937  
Email: [sales@cpsww.com](mailto:sales@cpsww.com)

Taiwan, United Kingdom  
**Cyber Power Systems, Inc.**

11F., No.26, Jinzhuang Rd., Neihu Dist., Taipei City 114, Taiwan  
Tel: +886 2 8792 9510 | Fax: +886 2 8792 9621  
Email: [tw.service@cyberpower.com](mailto:tw.service@cyberpower.com), [uk.service@cyberpower.com](mailto:uk.service@cyberpower.com)

All Other Regions

Please visit our website for local contact information.

