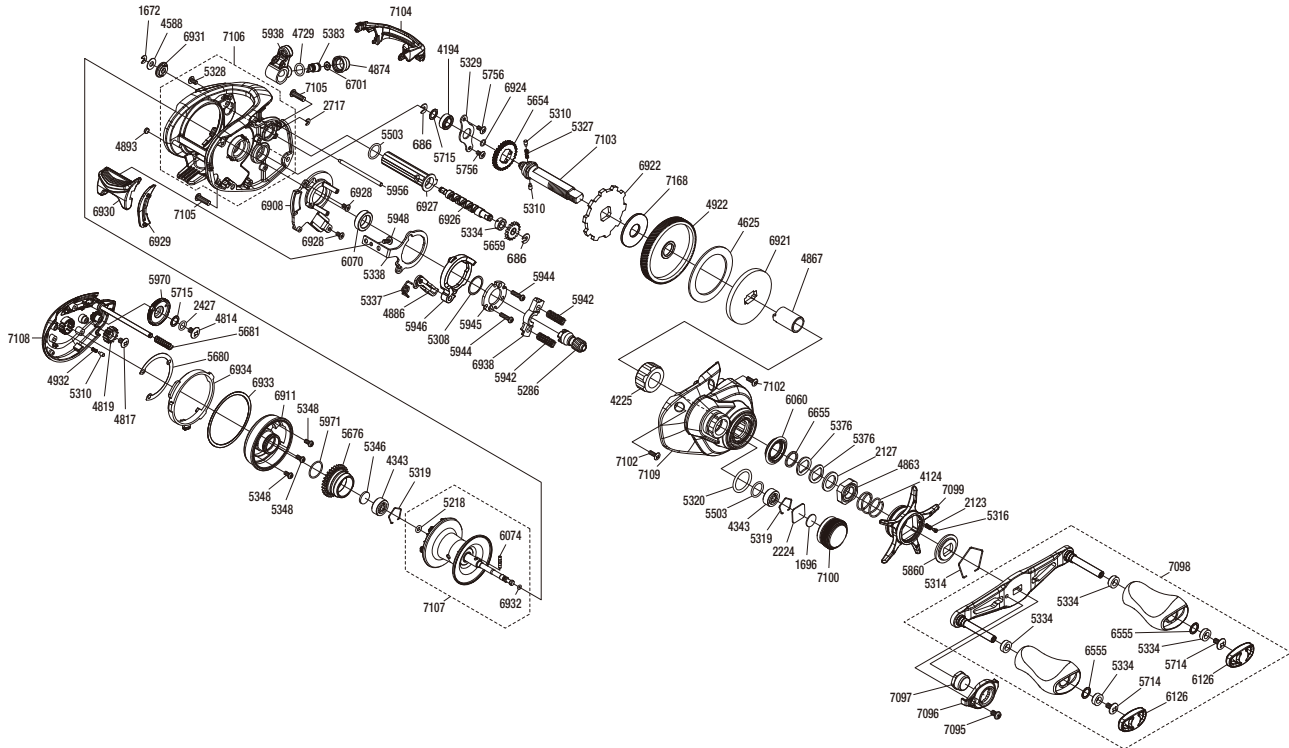


# SHIMANO

## TRAX

## TRX150HGA



(51RL532A30X)

#	Part No.	Description	#	Part No.	Description	#	Part No.	Description
686	105NK	E Lock	5328	10LCQ	Screw	6701	10CFU	Spacer
1672	105NC	E Lock	5329	109T1	Drive Shaft Retainer	6908	10R56	Clutch Guard Assembly
1696	10896	Cast Control Spacer B	5334	10PXZ	Bushing	6911	10S8R	Brake Case
2123	10BT2	Click Spring	5337	10R1H	Clutch Pawl Spring	6921	100BK	Key Washer
2127	10J1N	Star Drag Spacer	5338	10QZV	Clutch Plate	6922	100BJ	Anti-Reverse Ratchet
2224	1085F	Cast Control Spacer A	5346	10EX5	Bearing Spacer	6924	108WU	O Ring
2427	108WS	O Ring	5348	10L1Q	Screw	6926	10S8K	Worm Shaft
2717	105NB	E Lock	5376	109F5	Washer	6927	10T3X	Level Wind Guard
4124	10A70	Star Drag Spring	5383	10BHQ	Line Guide Pawl	6928	100S4	Screw
4194	105BP	Ball Bearing	5503	101GT	O Ring	6929	10T3V	Clutch Bar Guide B
4225	10F3C	Roller Clutch Bearing	5654	101K8	Idle Gear A	6930	101EC	Clutch Button
4343	105C3	Ball Bearing	5659	10SRL	Idle Gear C	6931	100G7	Level Wind Guard Bushing
4588	10FJZ	Washer	5676	101DR	Brake Ring Gear	6932	100BH	O Ring
4625	106XT	Drag Washer C	5680	10SSN	Washer	6933	101UN	Washer
4729	108WQ	O Ring	5681	10KNH	Spring	6934	101Q2	Left Side Plate Cam Lever
4814	103LE	Screw	5714	10LFA	Screw	6938	10S8M	Yoke
4817	103L7	Screw	5715	10G6D	Washer	7095	10LHR	Screw
4819	10CLF	Idle Gear	5756	10S3Y	Screw	7096	10SJ1	Handle Nut Plate
4863	10A3T	Star Drag Nut	5860	10J26	Star Drag Click Plate	7097	10DVL	Handle Nut
4867	10CCN	Roller Clutch Inner Tube	5938	10DUG	Line Guide Assembly	7098	10TJ1	Handle Assembly
4874	10FJB	Pawl Cap	5942	100U9	Yoke Spring	7099	10SUQ	Star Drag
4886	10MME	Clutch Pawl Assembly	5944	10LV0	Screw	7100	1001M	Cast Control Cap
4893	108PY	Washer	5945	100US	Clutch Cam Retainer	7102	10MPT	Screw
4922	10CMC	Drive Gear	5946	100UK	Clutch Cam	7103	10SUN	Drive Shaft
4932	10GQZ	Click Spring	5948	10LF4	Screw	7104	10SUP	Level Wind Protector
5218	10EZ7	O Ring	5956	100UT	Stabilizer Bar	7105	10DQW	Screw
5286	10CSC	Pinion Gear	5970	10SAZ	Brake Dial	7106	100T7	Frame Assembly
5308	10190	Washer	5971	100GW	O Ring	7107	10TE4	Spool Assembly
5310	10HJG	Idle Gear Pin	6060	10DRE	Roller Clutch Water Proof	7108	100T6	Left Side Plate Assembly
5314	10KXW	Click Plate Retainer	6070	10DRK	Pinion Gear Bushing	7109	10SJ0	Right Side Plate
5316	10MFC	Click Pin	6074	10P68	Spool Clutch Pin	7168	109BN	Drag Washer A
5319	1054D	Bearing Retainer	6126	100NC	Handle Knob Seal			
5320	10R22	O Ring	6555	104FH	Washer			
5327	10JDY	Idle Gear Spring	6655	100SE	Washer			

Please note that the number of adjusting washers may not be the same as shown in the exploded views.  
(Adjustment will vary with each individual product.)

(230731)\_003