

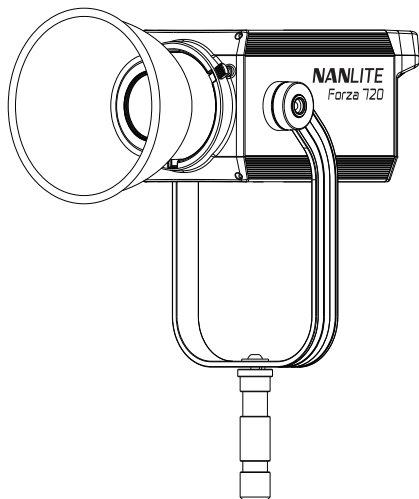
**NANLITE**

*Forza 720*  
USER MANUAL

Guangdong NanGuang Photo&Video Systems Co., Ltd

# Forza 720 LED Spot Light

## ■ Product Diagram



## ■ Technical Data

Rated power: 800W

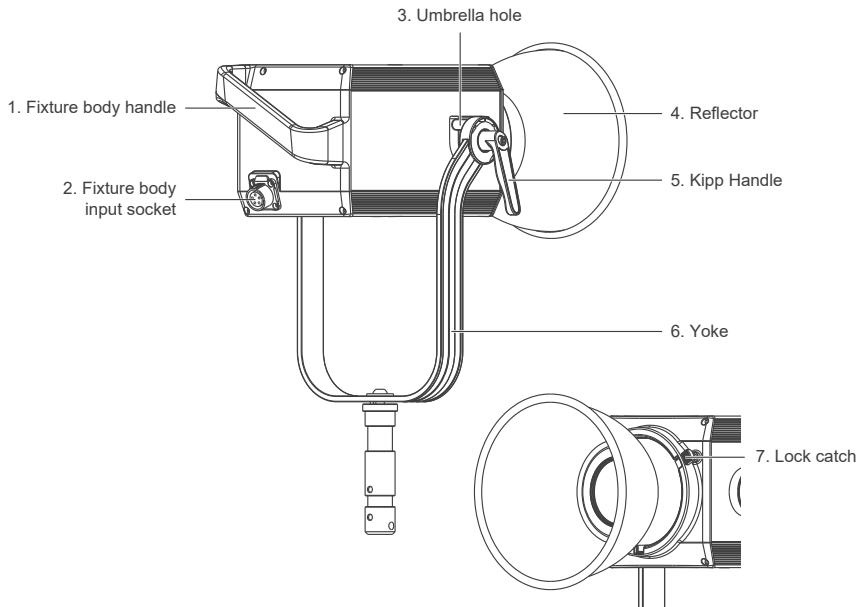
Input voltage/current: DC48V/16.67A Max  
AC100-240V 50/60Hz

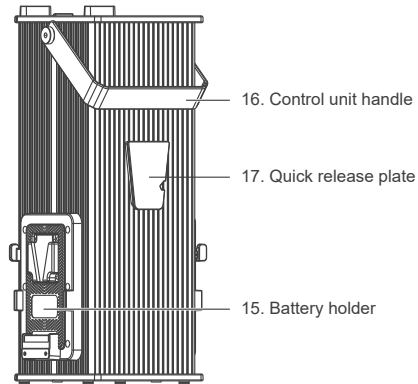
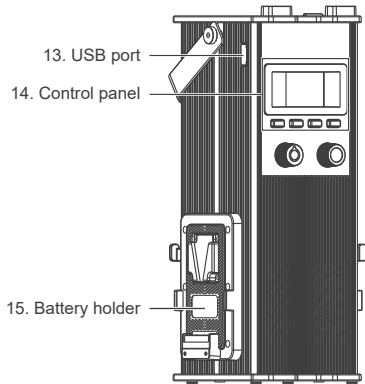
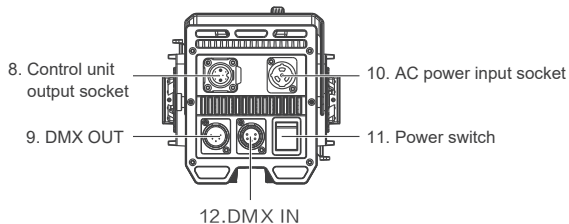
Color Temperature: 5600K

CRI: 95

TLCI: 96

## Product Details





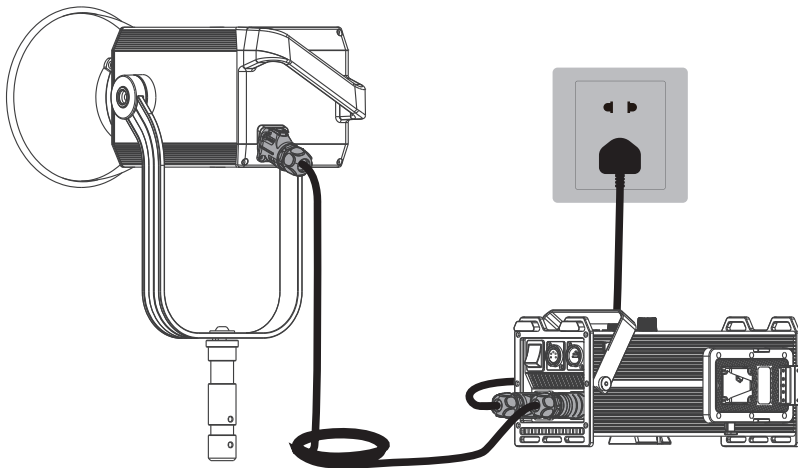


## Detailed Description

1. Fixture body handle: Be convenient for users to lift the lamp head and adjust the direction of the light.
2. Fixture body input socket: For connecting the lamp head with control unit.
3. Umbrella hole: For installing/removing an umbrella.
4. Reflector: For concentrating light to improve the central illumination.
5. Kipp Handle: Tighten or release the tilt movement of the fixture on the yoke.
6. Yoke: Mount the fixture on a stand, pan and tilt.
7. Lock catch: To lock or release the reflector or other accessories.
8. Control unit output socket: To connect a DC cable for connecting between the lamp head and control unit.
9. DMX OUT: DMX signal output interface.
10. AC power input socket: For connecting the AC power cable to supply power to the control unit.
11. Power switch: To turn on/off the fixture.
12. DMX IN: DMX signal input interface.
13. USB port: For updating the firmware
14. Control panel: For displaying various function operations and data.
15. Battery holder: For mounting the 14.8V/12A V-mount battery.
16. Control unit handle: Be convenient for users to lift the control unit.
17. Quick release plate: For mounting the quick release clamp.

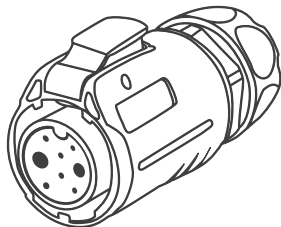
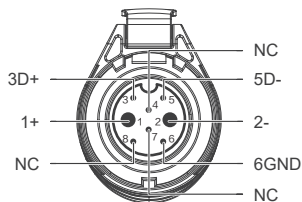
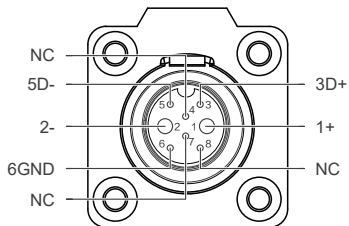
## Usage

1. Connection between the Light Fixture, Control Unit and the Power Outlet.



Note:

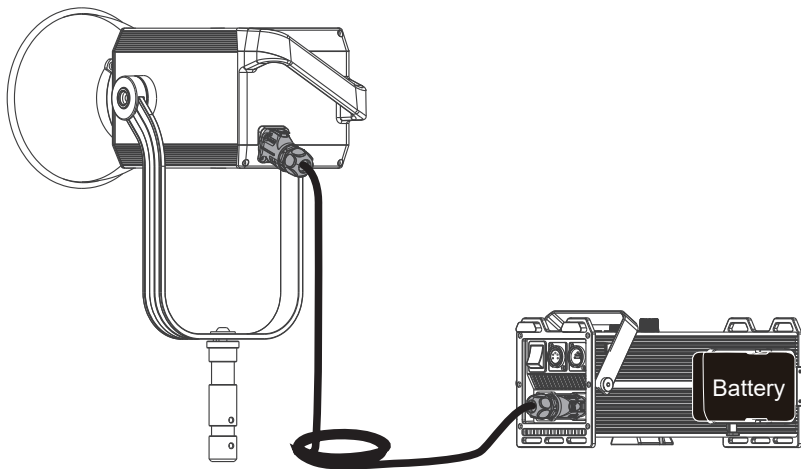
- ①When connecting the power supply, please make sure the power, voltage and frequency are consistent with the control unit.
- ②Make sure to use the provided power cable and DC connecting cable. The connection between the DC plug and the fixture body input socket should be connected as following



- 1: Power supply + pole
- 2: Power supply - pole
- 3: D+
- 4: NC

- 5: D-
- 6: GND
- 7: NC
- 8: NC

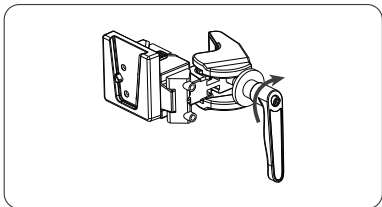
## 2. Connection between the Light Fixture and Control Unit with Battery



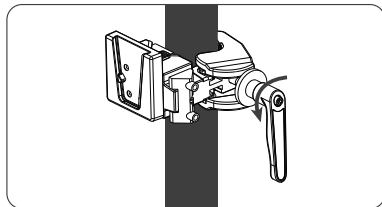
### Note:

- ①When powered by two 14.8V batteries, the maximum output is 40%.
- ②When powered by two 26V batteries, the maximum output is 70%.
- ③Do not use the 14.8V and 26V batteries at the same time, or use only one battery of either kind to power the fixture.
- ④The batteries are not included and are sold separately.

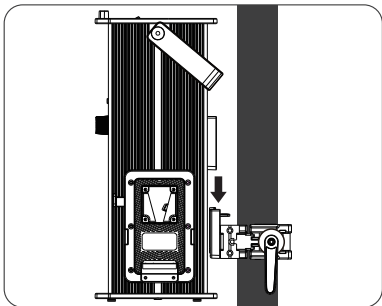
### 3. Quick Release Clamp Installation



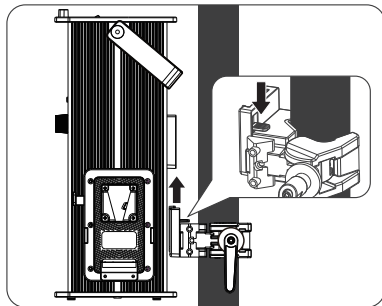
① Loosen the kipp handle to open the clamp.



② Mount the quick release clamp on the light stand, then rotate the kipp handle to tighten the clamp.

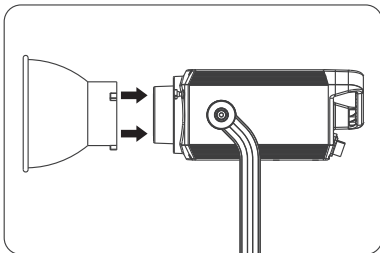


③ Align the quick release plate on the control unit with the quick release mount on the clamp to mount the control unit on to the clamp.

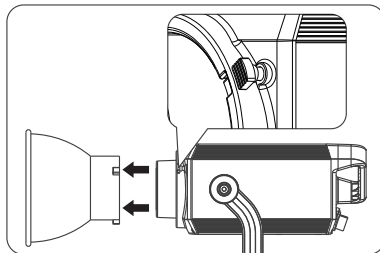


④ When removing the control unit, press the lock catch on the clamp and release the control unit from the clamp.

## 4. Reflector Installation



① Align the reflector with the mount and rotate according to the sign to secure it into the fixture.



② Press the lock catch and rotate the reflector according to the sign to release it from the fixture.

## Remote Control

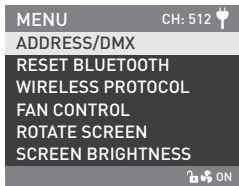
· Forza 720 supports DMX, 2.4G, RDM remote control, and includes a built-in Bluetooth as well.

▲ Address code need to be pre-set for DMX, 2.4G, RDM remote control solutions.

1. ADDRESS/DMX, including ADDRESS, DMX MODE and DMX DIMMING CURVE settings.

### ① ADDRESS setting

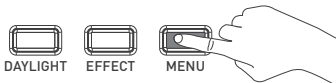
Press MENU button to access options.

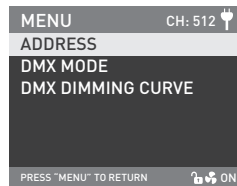
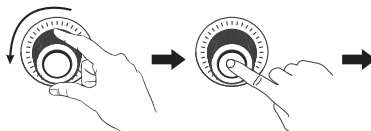
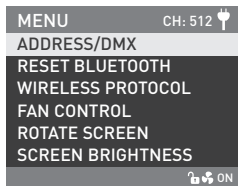


Left knob

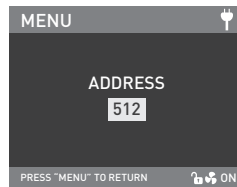
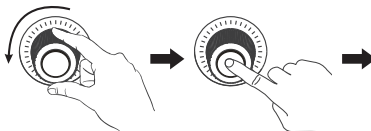
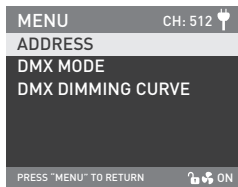


Right knob

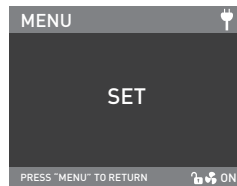
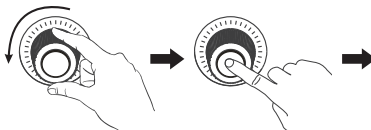
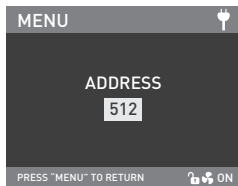




Rotate "Right knob" to ADDRESS/DMX. Press "Right knob" to enter the corresponding secondary menu.



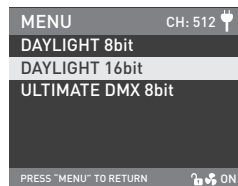
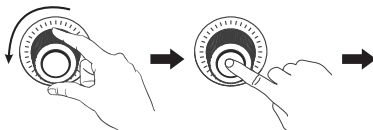
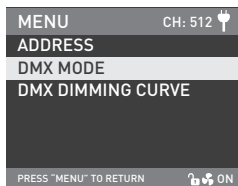
Rotate "Right knob" to ADDRESS. Press "Right knob" to enter the corresponding third menu.



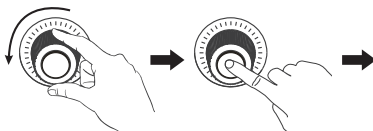
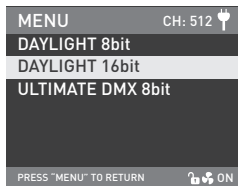
Rotate "Right knob" to select the desired ADDRESS code. Press the "Right knob" to set.



②DMX MODE

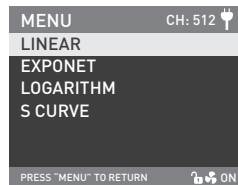
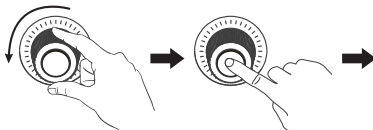
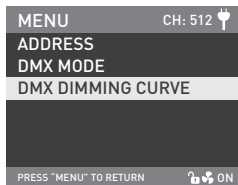


Rotate "Right knob" to DMX MODE. Press "Right knob" to enter the corresponding third menu.

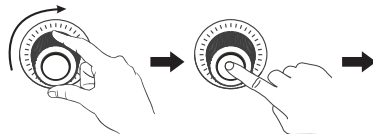
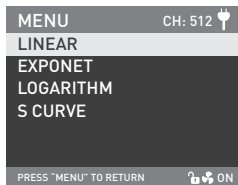


Rotate "Right knob" to select the corresponding DMX mode. Press "Right knob" to set.

③ DMX DIMMING CURVE



Rotate "Right knob" to DMX DIMMING CURVE. Press "Right knob" to enter the corresponding third menu.



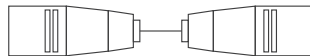
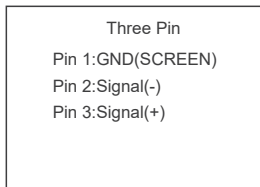
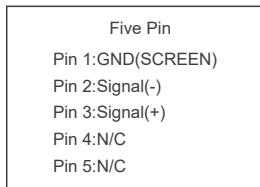
Rotate "Right knob" to select the corresponding DMX dimming curve. Press "Right knob" to set.

## 2. DMX Remote Control

① Connect the fixture to the DMX/RDM consoles via DMX cable as shown below:

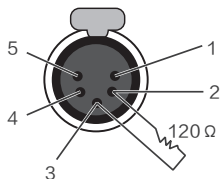


- The connection between light fixtures, or light fixture and DMX/RDM console, must use 5-Pin shielded cable. Make sure its diameter is not less than 0.3mm. XLR plug/socket and the wire should be connected as shown above.
- Pin1, Pin2, Pin3 for connecting DMX signal. Pin4, Pin5 has no connection.
- ▲ NOTE: When connecting DMX, make sure the internal pin is not in contact with the inner case. The fixture can match the DMX512 (1990) control signal.
- Plug of 5-Pin and 3-Pin XLR plug/socket conversion. The fixture is supplied with 5-Pin XLR plug. If using a 3-Pin XLR plug, please follow the instructions below.

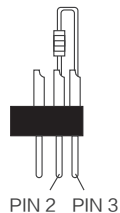


## ②DMX Terminator

In DMX control mode, the DMX output of the last fixture should be connected with a DMX terminator (Not included). This prevents interference caused by DMX signals in the transmitting process. The terminator is connected with a 120Ω(OHM) resistor across Pin 2 and Pin 3. (As shown below)



DMX Terminator Connection  
Connect a 120Ω(OHM) resistor  
across Pin 2 and Pin 3 in an  
XLR plug and insert into the  
DMX OUT socket on the last unit.



③Set the address of the fixture.

④Refer to the DMX reference guide and control the light via DMX/RDM console.

(For detailed operation please refer to the DMX/RDM console operation manual.)

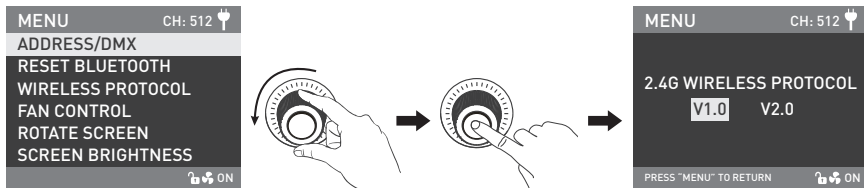
Note: DMX reference guide "Forza 720 DMX REFERENCE GUIDE (NANLITE) V1 20211215 W" is downloadable from [www.nanlite.com](http://www.nanlite.com).

### 3. 2.4G Remote Control

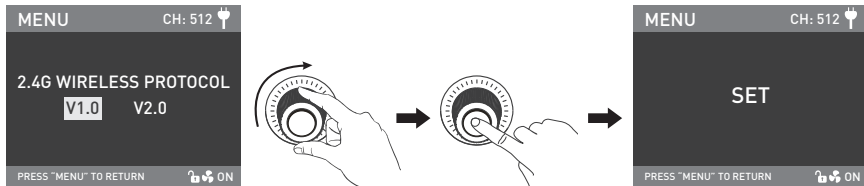
- Set the address of the 2.4G remote controller to be consistent with the light fixture, enabling the fixture to be remotely controlled by 2.4G remote controller or by APP via the transmitter box.

Note: ①2.4G remote controller and transmitter box are sold separately.

②The fixture supports the 2.4G wireless protocol V1.0 and V2.0. Set fixture to V2.0 while using WS-RC-C1 or WS-RC-C2 remote controller. Set fixture to V1.0 while using other remote controllers.



Rotate "Right knob" to WIRELESS PROTOCOL, press "Right knob" to enter the corresponding secondary menu.

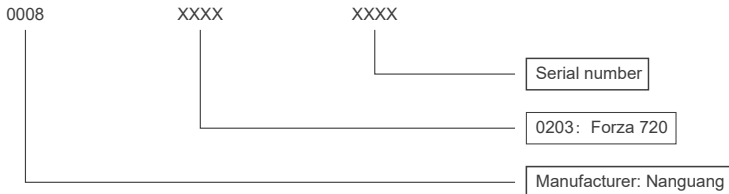


Rotate "Right knob" to select V1.0 or V2.0, press "Right knob" to set.

#### 4. RDM Remote Control

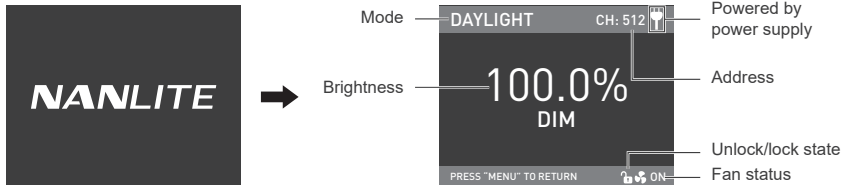
- ① Connect the light fixture to the console with RDM function using a connection cable, the connection method is the same as with a DMX/RDM console.
- ② Control the fixture via a console with RDM function. (For specific operation methods, please refer to the RDM console operation manual.)

Note: The UID format of the fixture is as follows:

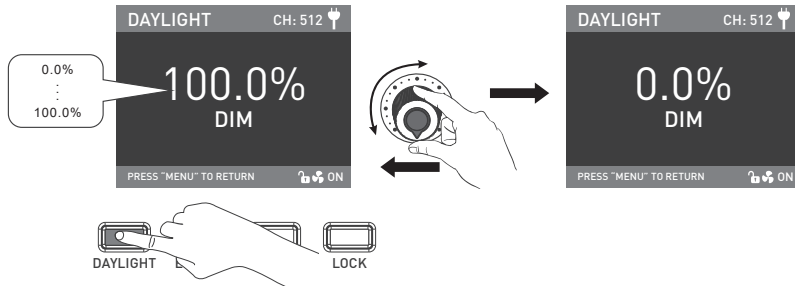


## Operating Instructions

1. Be sure that the power switch of the control unit is in the "off" position. Now it is safe to connect the control unit and power the unit on, the screen will display "NANLITE".

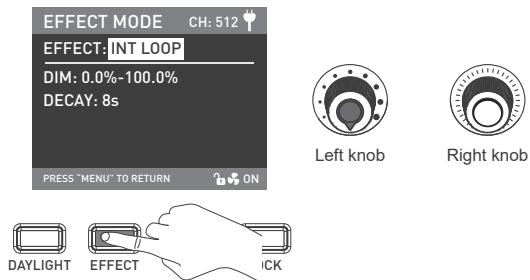


①DAYLIGHT button: Press the DAYLIGHT button to enter the DAYLIGHT MODE, rotate the "Left knob", clockwise to increase brightness while counterclockwise to reduce the brightness. The screen shows the percentage of brightness, DIM range: 0.0-100.0%.

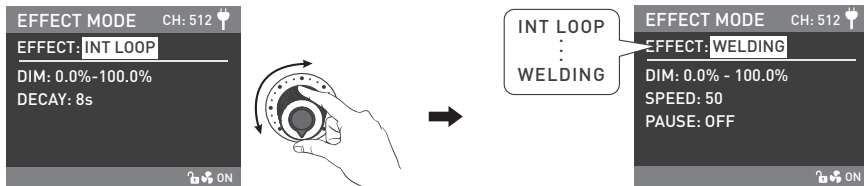


Note: In other modes, the brightness adjustment range is the same as in DAYLIGHT mode. When the fixture function is unlocked, in any mode, press the "Left knob", the light is off, the brightness percentage on the display is 0.0%. Press the "Left knob" again, the fixture restores the previous status. Press the "Left knob" continuously to toggle between on and off.

2. EFFECT button: Press the EFFECT button to enter EFFECT MODE.

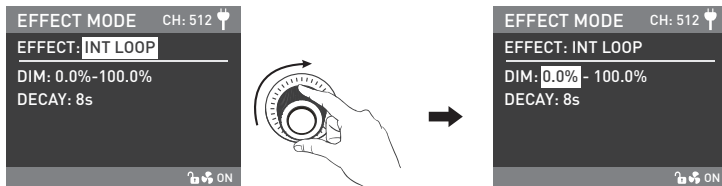


- Forza 720 has built-in effects including: INT LOOP, FLASH, PULSE, STORM AUTO, STORM MANUAL, TV, PAPARAZZI, CANDLE/FIRE, BAD BULB, FIREWORK, EXPLOSION AUTO, EXPLOSION MANUAL and WELDING.

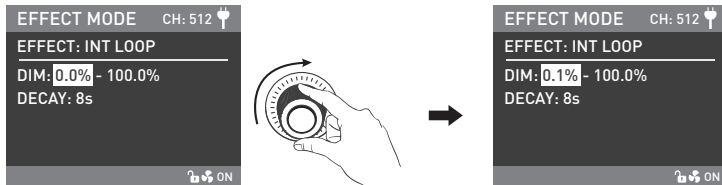


Rotate "Left knob" to select the desired special effect.





Rotate the "Right knob" to select options under the effects.

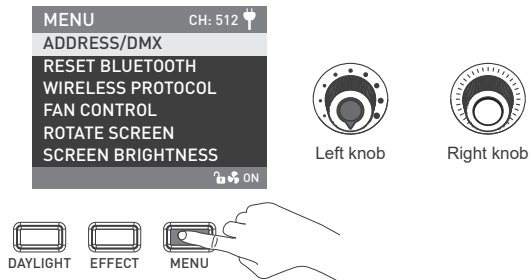


Rotate "Left knob" to set the corresponding parameters.

Note:

1. All the special effects are set in the same way.
2. After setting the special effects of STORM MANUAL and EXPLOSION MANUAL, need to press the "Right knob" to trigger the effects.

3. MENU button: Press the MENU button to enter the menu.

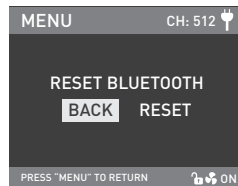
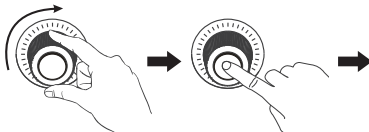
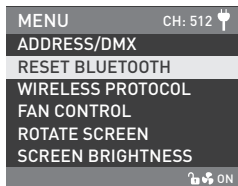


- Rotate "Right knob" to select the setting item and press "Right knob" to enter the corresponding secondary menu. Then rotate "Right knob" again to select corresponding options and press "Right knob" to set. Press the MENU button to return to the previous menu.

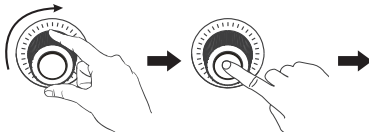
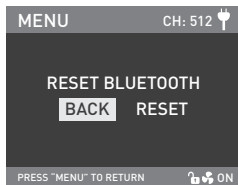
### ① ADDRESS/DMX

For more operation details please refer to P14.

### ② RESET BLUETOOTH



Rotate "Right knob" to RESET BLUETOOTH. Press "Right knob" to enter the corresponding third menu.

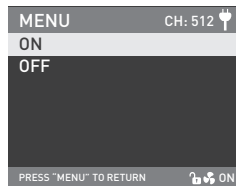
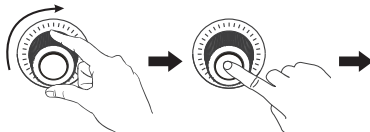


Rotate "Right knob" to select RESET. Press "Right knob" to set.

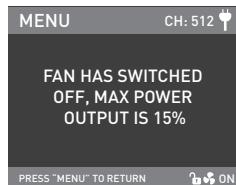
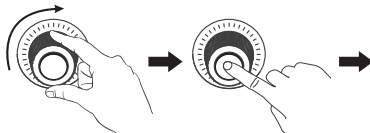
### ③ WIRELESS PROTOCOL

For more operation details please refer to P19.

④ FAN CONTROL



Rotate "Right knob" to FAN CONTROL. Press "Right knob" to enter the corresponding secondary menu.

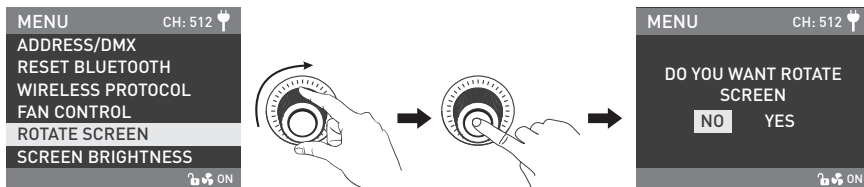


Rotate "Right knob" to select the fan ON or OFF. Press the "Right knob" to set.

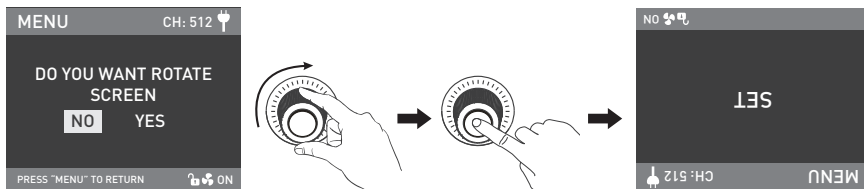
Note: 1. The maximum output is 100% when the fan is on.

2. The maximum output is 15% when the fan is off.

⑥ ROTATE SCREEN

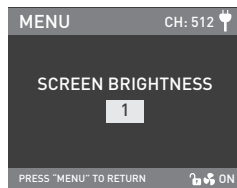
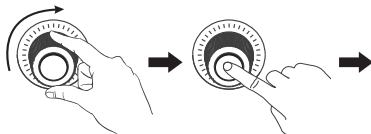
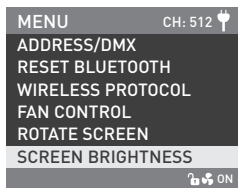


Rotate "Right knob" to ROTATE SCREEN. Press "Right knob" to enter the corresponding secondary menu.

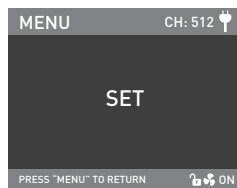
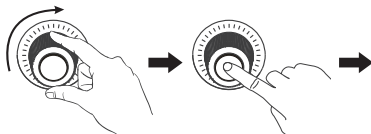
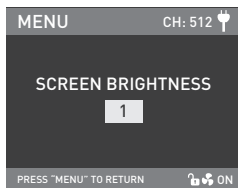


Rotate "Right knob" to select YES or NO. Press "Right knob" to set.

⑥ SCREEN BRIGHTNESS

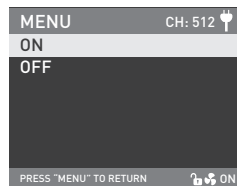
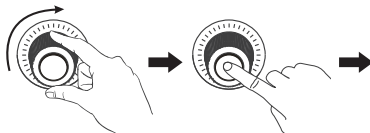
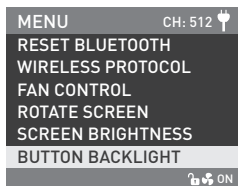


Rotate "Right knob" to SCREEN BRIGHTNESS. Press "Right knob" to enter the corresponding secondary menu.

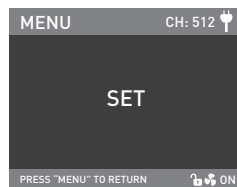
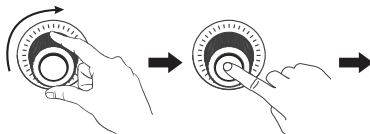
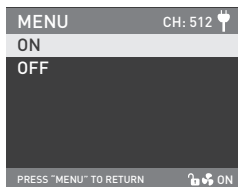


Rotate "Right knob" to select SCREEN BRIGHTNESS. Press "Right knob" to set.

## ⑦BUTTON BACKLIGHT

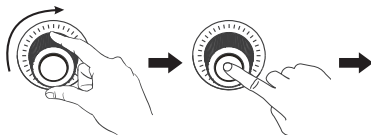
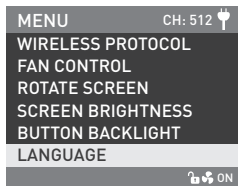


Rotate "Right knob" to BUTTON BACKLIGHT. Press "Right knob" to enter the corresponding secondary menu.

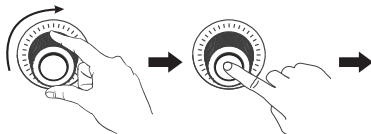


Rotate "Right knob" to select ON or OFF. Press the "Right knob" to set.

## ⑧ LANGUAGE



Rotate "Right knob" to LANGUAGE. Press "Right knob" to enter the corresponding secondary menu.

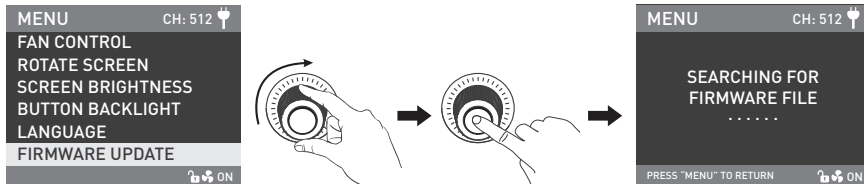


Rotate "Right knob" to select the language. Press "Right knob" to set.



## ⑨ FIRMWARE UPDATE

- Store the firmware files of the lamp head and the controller in the root directory of the USB flash drive at the same time (make sure the versions of the two firmware files are matched), and then Insert the USB flash drive into the USB port of the controller.

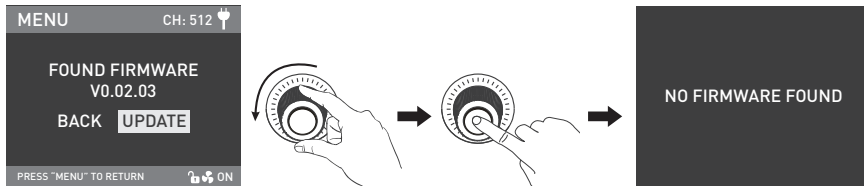


Rotate "Right knob" to FIRMWARE UPDATE. Press "Right knob" to enter the interface of SEARCHING FOR FIRMWARE FILE.

Note:

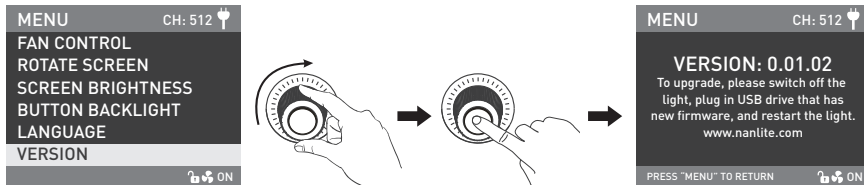
- (1) Download the firmware installation package from the website and please do not rename the file.
- (2) Ensure the format of the USB flash drive is FAT, FAT32 or exFAT.
- (3) If it prompts "PLEASE CONNECT THE LAMP HEAD TO THE CONTROLLER BEFORE FIRMWARE UPDATE", please confirm whether the lamp head is connected to the controller or whether loose connection occurs.
- (4) If it prompts "THE VERSIONS OF THE TWO FIRMWARE FILES DON'T MATCH, PLEASE CHECK THE FILES AND TRY AGAIN", please check whether the two firmware file versions are the same.
- (5) If it prompts "MISSING PARTS OF FIRMWARE FILES, PLEASE CHECK THE FILES AND TRY AGAIN", please check whether there are two firmware files in the USB flash drive.
- (6) If it prompts "NO FIRMWARE FOUND", please check whether the firmware file is correct, whether the firmware file is stored in the root directory of the USB flash drive, or whether the USB flash drive format is FAT, FAT32 or exFAT format.

- (7) If the firmware file still cannot be found after following (7) all the steps mentioned above , please reformat the USB flash drive and try again.
- (8) If the lighting fixture still cannot identify the USB flash drive, please replace the USB flash drive with another one.



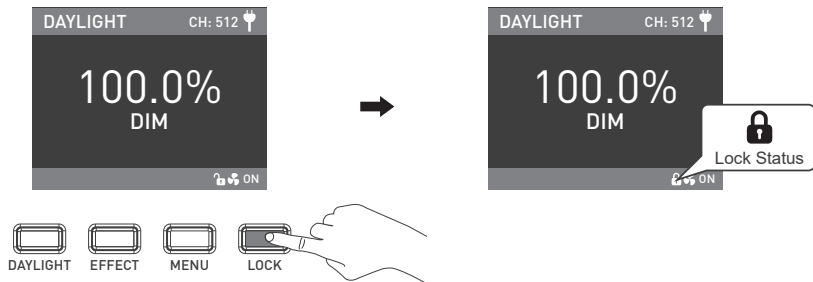
After the firmware file is found, will enter the selection interface of firmware update. Rotate "Right knob" to select UPDATE, and press the "Right knob" to update the firmware. The fixture will restart automatically after the update is completed.

#### ⑩VERSION



Rotate "Right knob" to VERSION. Press "Right knob" to check the current version.

4. LOCK button: Press and hold the "LOCK button" to lock all functions. Operation buttons or adjustment knobs can not change the current function. Press and hold the LOCK button again to release the Lock status.



5. When the fixture is not in use, please turn off the power switch.


## Safety Precautions

1. Please open the package to check for possible damage caused in transit, please do not use if damage is found and contact place of purchase or manufacturer as soon as possible.
2. Do not use a power cord with damaged insulation, do not unplug too hard or drag the power cord directly.
3. Make sure that the power supply voltage used matches the voltage designated by the light before installation.
4. Please turn the light off when it is not in use or before cleaning.
5. Keep the light safely stored and away from children.

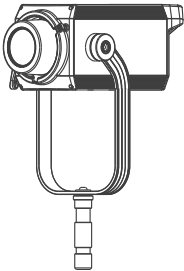
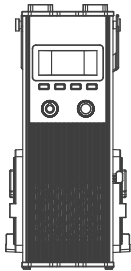


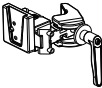
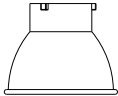

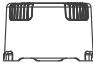


## Notice

1. Please take off the COB protective cap before using.
2. When the fixture is turned on, do not look directly at the emitter.
3. Please do not leave flammable or explosive articles within 0.5m of the fixture.
4. Do not place objects on the light emitter or allow liquid to flow inside the fixture or the emitter.
5. Do not place the fixture near flammable substances like alcohol or gasoline.
6. When cleaning the light, please wipe off debris or dirt by using a cloth with clean water or neutral cleanser.
7. The fixture should be used in dry and ventilated place and avoid being used in damp, dusty or overheated environment, also make sure the fan and the vents are not blocked or obstructed.
8. Any attempt to repair the fixture by yourself will void warranty, disassembling and repair can only be allowed when trained professionals are involved under strict protocol regulated in this manual.
9. For optimal cooling of the fixture, the vents should not be covered when using, or might result in damaging the equipment. The temperature on the fixture surface is high when using for a long time, please caution to prevent burns and scalds.

## General Fault Detection and Diagnosis

Fault Detection	Diagnosis
The light won't boot up properly	<ol style="list-style-type: none"> <li>1. Please check that the power supply, cable and outlet are properly connected and that the cable is not faulty or loose.</li> <li>2. Please check whether the voltage value is within the specified parameters.</li> </ol>
The fixture can be operated manually, but DMX control is not working.	<ol style="list-style-type: none"> <li>1. Please check whether the DMX original address setting of the fixture is correct.</li> <li>2. Please check that the XLR signal cable is connected correctly and that it is not faulty or damaged.</li> </ol>
LCD display is on, but light cannot be operated.	Please check if the LCD display shows "  ". Press and hold the "LOCK" key for 2s to release the LOCK.
The fan doesn't work	<ol style="list-style-type: none"> <li>1. Please check if the fan is OFF</li> <li>2. If the screen displays "Fan abnormal", please contact place of purchase.</li> </ol>
If the failure is not resolved after troubleshooting, please contact place of purchase.	


## What's in the box? Please kindly check.

Forza 720×1 	Control Unit×1 	Power Cable 4.5M×1 	Connecting Cable 5M×1 
		Quick Release Clamp×1 	Reflector×1 
Carrying Bag×1 	COB Protective Cap×1 	DMX Reference Guide×1 	User Manual×1 

This manual and all stats within it were produced under controlled conditions, and are accurate at time of print. Any future changes to design/technical data can be found at [www.nanlite.com](http://www.nanlite.com).

Version: V1 2021-12-28

**NANLITE**

 +86-754-85751187

 +86-754-85300887

 [service@nanlite.com](mailto:service@nanlite.com)

 Zhanglin,324,Dongli Chenghai Shantou Guangdong China

[www.nanlite.com](http://www.nanlite.com)