

F1807 x MIP Brass PEX Adapter

Job Name	_____
Location	_____
Engineer	_____
Contractor	_____
Tag	_____ PO# _____

Specifications

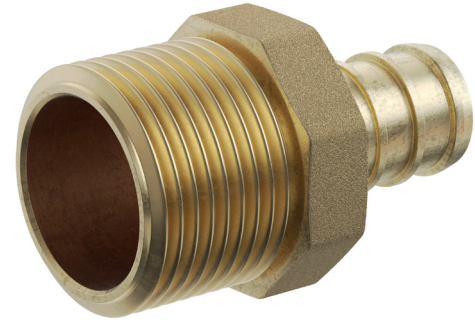
Manufactured to the highest industry standards, Jones Stephens' F1807 lead-free brass crimp fittings provide precise, leak-free connections. The secure and reliable crimp fitting method provides full, immediate strength upon installation, with 360-degree uniform pressure. Approved for use with PEX piping.

Applications

Jones Stephens' F1807 x MIP Brass PEX Adapters are approved for use with commercial and residential non-potable water applications.

Materials

Lead-free brass

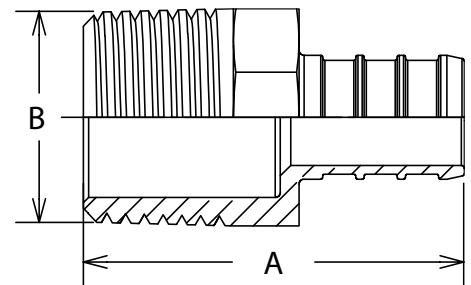


Dimensions and Product Offering

PART NO.	SIZE - IN	A - IN (MM)	A TOLERANCE ±IN(MM)	B - IN (MM)	B TOLERANCE ±IN(MM)	WEIGHT - LBS (G)	WEIGHT TOLERANCE ±LBS (G)
C76034LF	0.50	1.45 (36.85)	0.01 (0.20)	0.50"-14 NPT	0.002 (0.05)	0.07 (31.75)	0.02 (10.89)
C76035LF	0.50 F1807 x 0.75 MIP	1.50 (38.15)	0.01 (0.20)	0.75"-14 NPT	0.002 (0.05)	0.11 (49.90)	0.02 (10.89)
C76036LF	0.75	1.50 (38.15)	0.01 (0.20)	0.75"-14 NPT	0.002 (0.05)	0.12 (54.43)	0.02 (10.89)
C76082LF	0.75 F1807 x 0.50 MIP	1.45 (36.85)	0.01 (0.20)	0.75"-14 NPT	0.002 (0.05)	0.08 (36.29)	0.02 (10.89)
C76037LF	1.00	1.87 (47.40)	0.01 (0.20)	1.00"-11.5 NPT	0.002 (0.05)	0.17 (77.11)	0.02 (10.89)
C76038LF	1.00 F1807 x 0.75 MIP	1.68 (42.75)	0.01 (0.20)	0.75"-14 NPT	0.002 (0.05)	0.13 (58.97)	0.02 (10.89)
C76113LF	1.25 F1807 x 1.00 MIP	2.03 (51.50)	0.04 (1.00)	1.00"-11.5 NPT	0.028 (0.71)	0.23 (102.50)	0.02 (10.89)
C76114LF	1.25	2.09 (53.00)	0.04 (1.00)	1.25" x 11.5 NPT	0.028 (0.71)	0.35 (158.50)	0.02 (10.89)
C76128LF	1.50	2.42 (61.48)	0.05 (1.20)	1.50" x 11.5 NPT	0.028 (0.71)	0.53 (239.50)	0.02 (10.89)
C76148LF	2.00	3.07 (78.00)	0.04 (1.00)	2.00" x 11.5 NPT	0.035 (0.89)	0.91 (415.00)	0.02 (10.89)

Certifications/Listings/Approvals

- ASTM F1807
- NSF/ANSI/ CAN 372, NSF/ANSI/CAN 61, and NSF/ANSI 14
- CSA B137.5
- IAMPO Listed
- Lead Law Compliant
- Vermont Act 193 Compliant



	ID (Min.)	OD
F1807 Specified Dimensions	in. (mm)	in. (mm)
1/2" End Connection	.35	.471 ± .004
3/4" End Connection	.53	.667 ± .004
1" End Connection	.71	.856 ± .004
1-1/4" End Connection	.87	1.045 ± .004
1-1/2" End Connection	1.02	1.233 ± .006
2" End Connection	1.37	1.602 ± .005