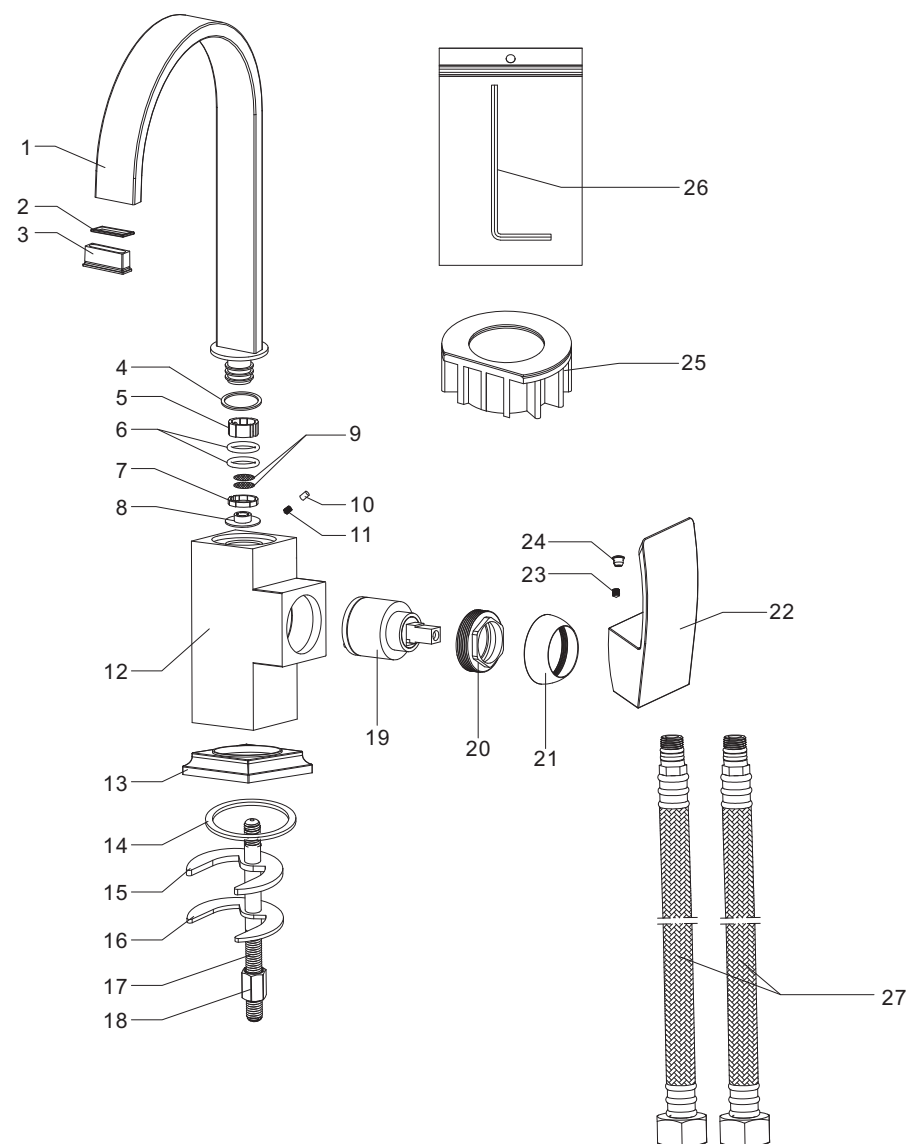
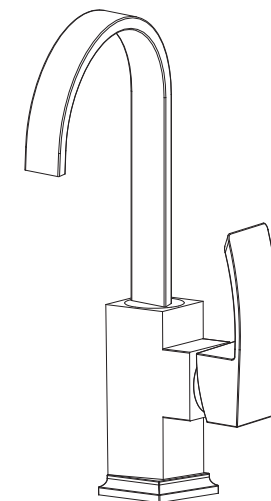


## Step 4 Parts list



NO.	PART NAME
1	Spout
2	Washer
3	Aerator
4	Wearing ring
5	Ring
6	O-ring
7	Ring
8	Flow restricter
9	Screen filter
10	Handle button
11	Screw
12	Body
13	Base
14	O-ring
15	Rubber washer
16	Clamp
17	Screw
18	Lock nut
19	Cartridge
20	Cartridge lock nut
21	Trim cap
22	Handle
23	Screw
24	Index
25	Plastic base
26	Allen key
27	Flexible hose

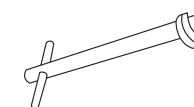


## SINGLE HANDLE KITCHEN FAUCET

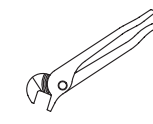


ASME A112.18.1/CSA B125.1

### RECOMMENDED TOOLS



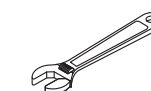
Basin wrench



Channel Locks



Goggles



Adjustable Wrench



Teflon tape



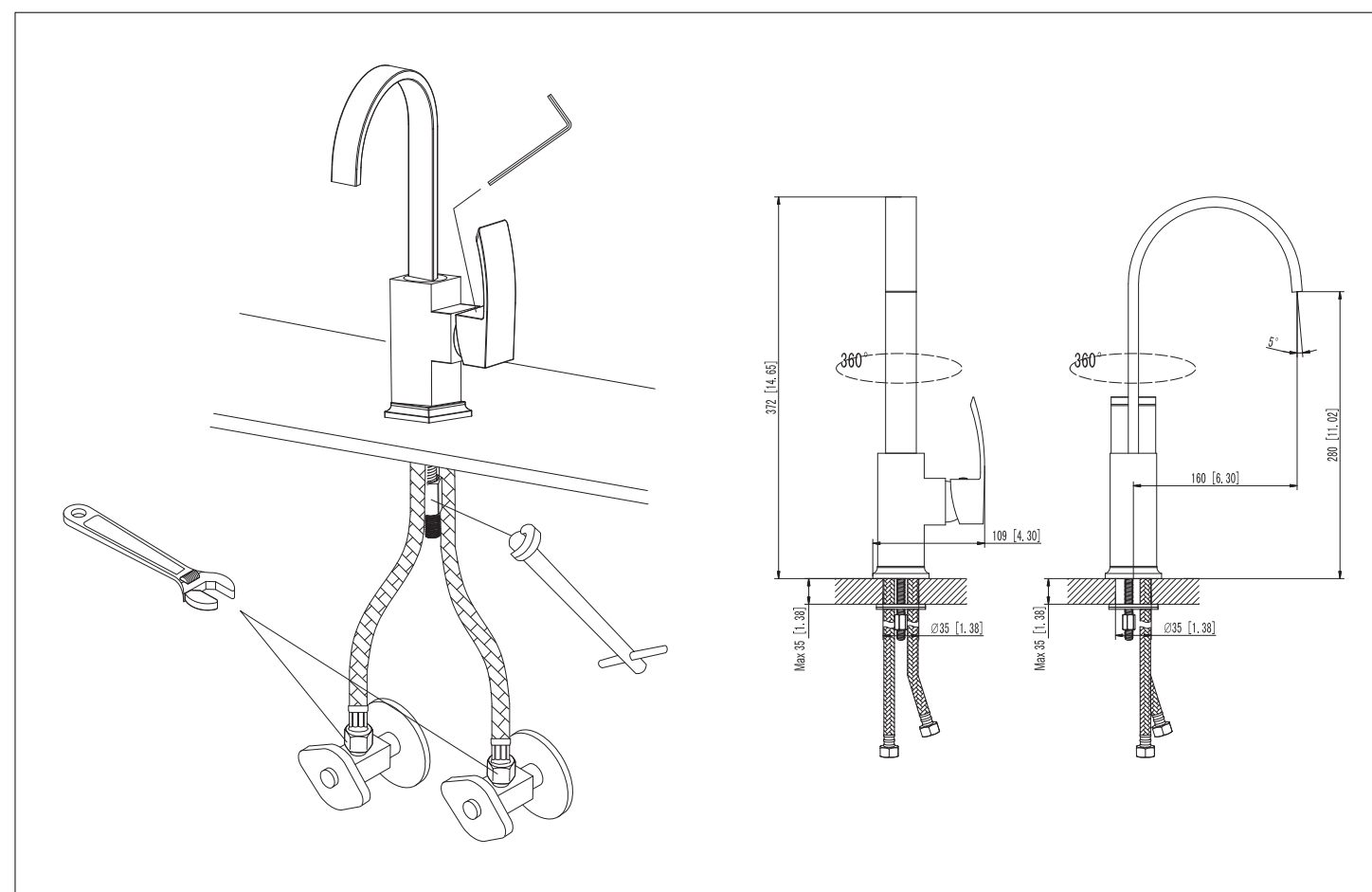
Allen key

**WARNING:**  
Please keep the tool for future use!

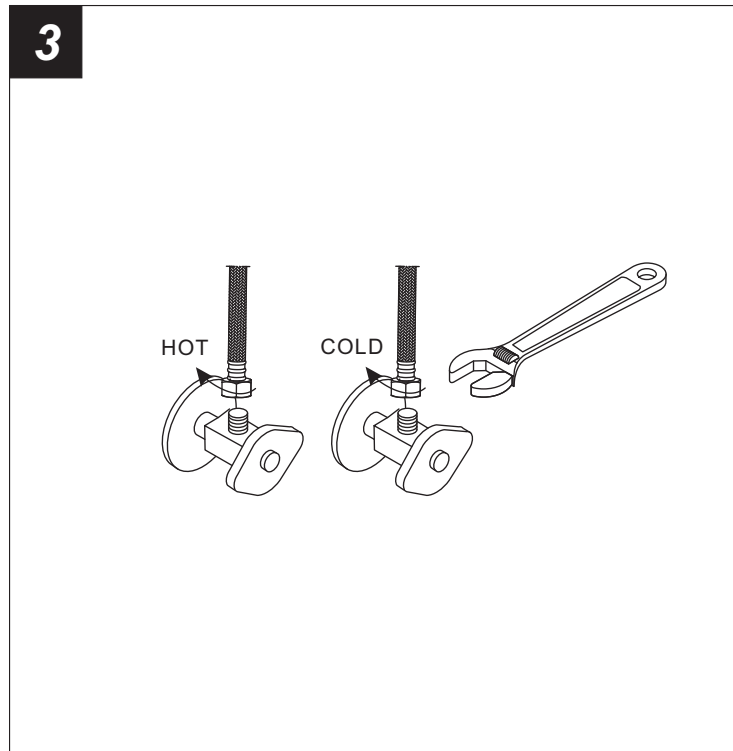
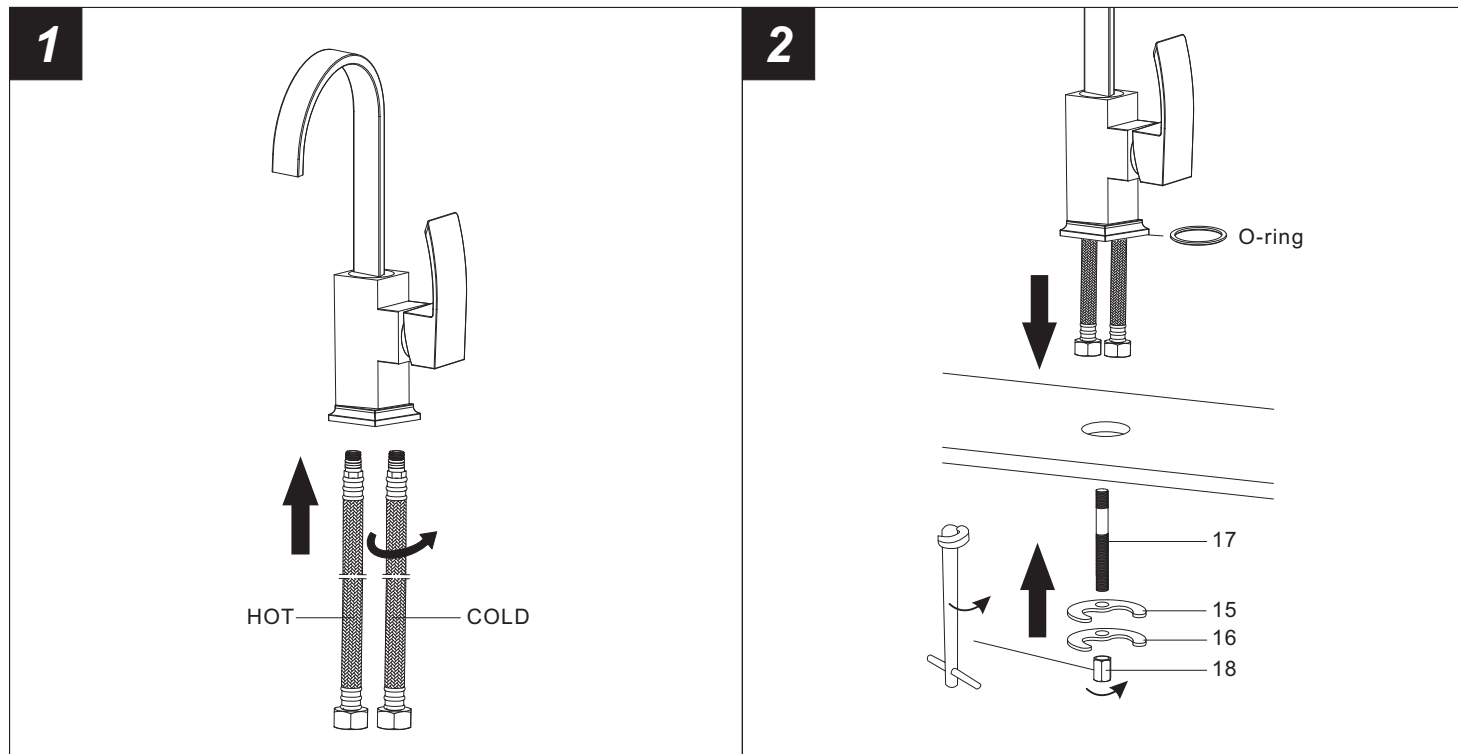


**Attention:**  
for easy installation, you will need:  
1. To read all the installation instruction completely before beginning.  
2. To read all the warning, attention and maintenance information.  
3. To purchase the proper supply lines.

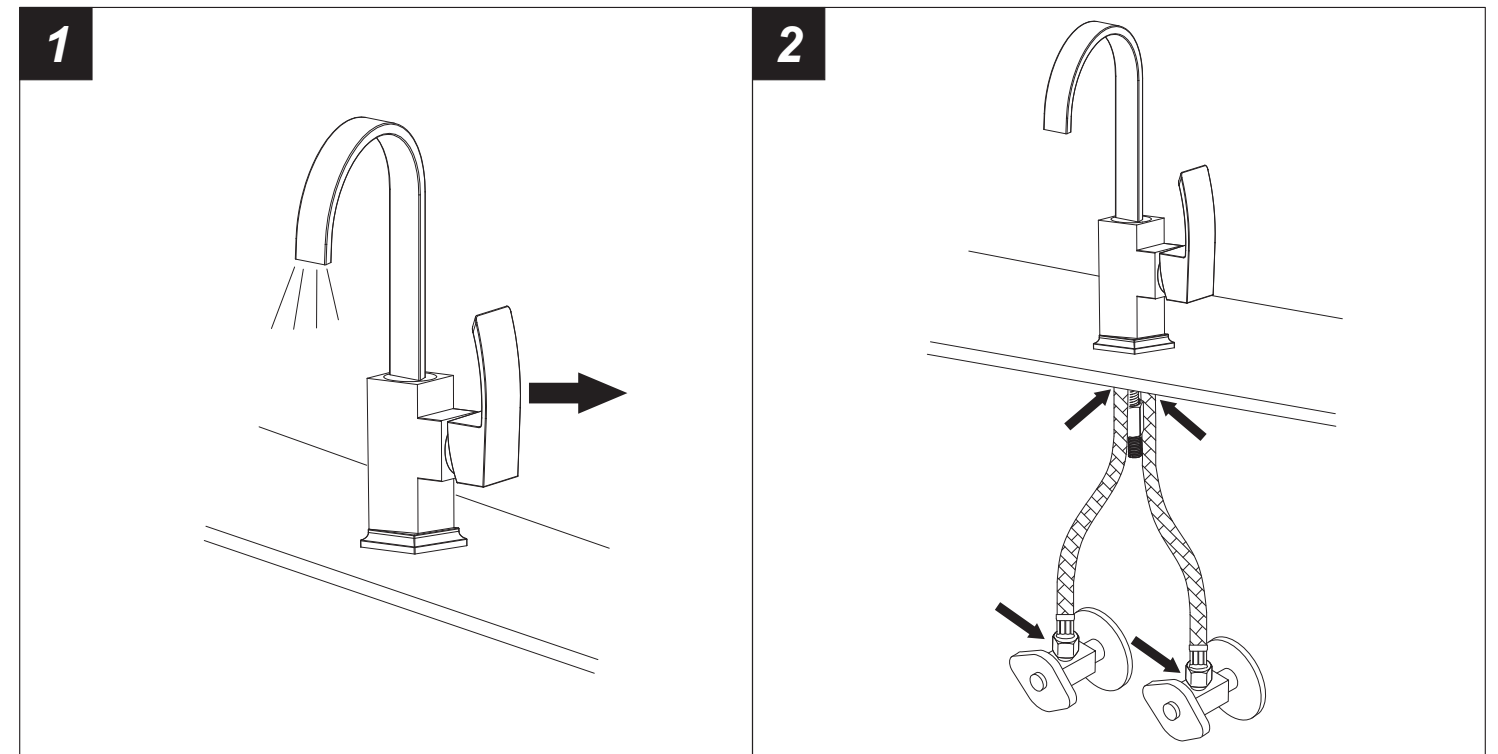
The tools might be applied to the following places:



## Step 1 Faucet installation



## Step 2 Checking and testing



## Step 3 Cleaning and care

Daily cleaning and care are required in order to keep the product shining and properly working.

- 1 Clean it with water and dry it with soft cloth.
- 2 Clean the product with gentle liquid or glass cleaner.
- 3 Don't use acid cleaner.
- 4 Don't clean with abrasive material, abrasive paper or knife.