

**AXOR Montreux**  
**2-Handle Freestanding Tub Filler Trim with Cross Handles and 1.8 GPM Handshower**  
 Finishes : **chrome**    Part no. : **16562001**



## Description

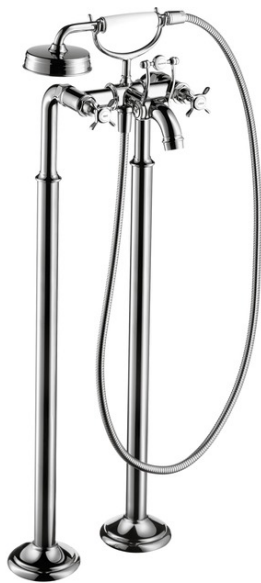
### Features

- Flow: 4.76 GPM (18 L/Min)
- 90° ceramic valves
- Integrated double backflow prevention

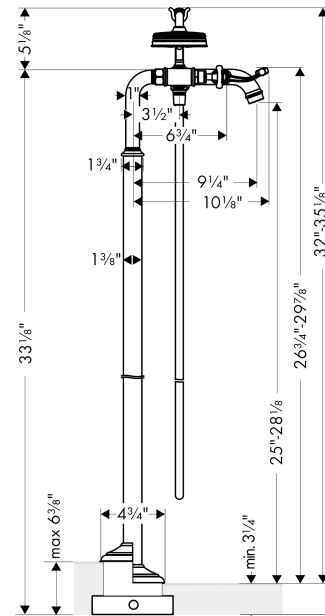
## Technology



## Product image



## Scale drawing

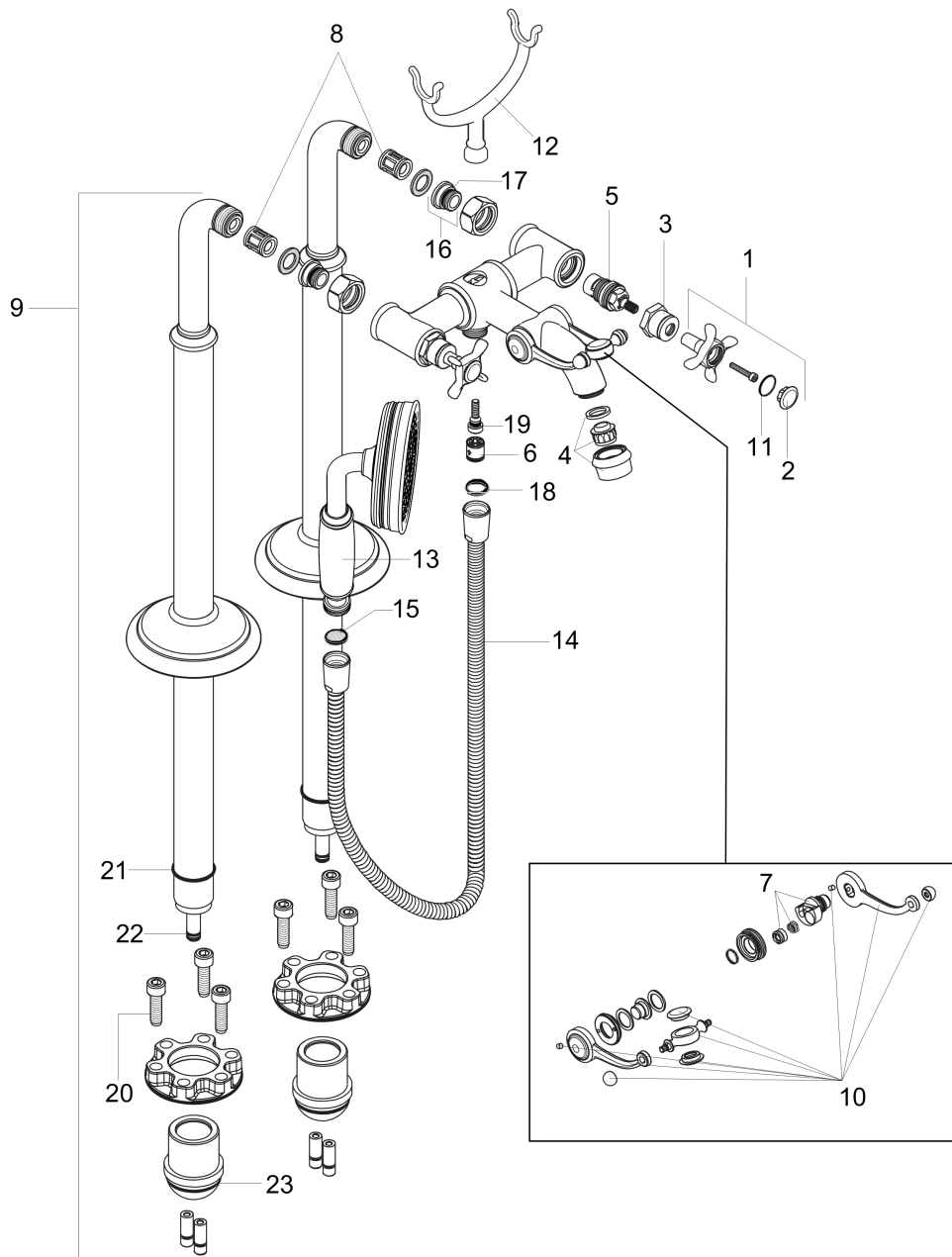


**AXOR Montreux**  
**2-Handle Freestanding Tub Filler Trim with Cross Handles and 1.8 GPM Handshower**  
 Finishes : **chrome**    Part no. : **16562001**



## Exploded drawing

Year of production: >01/19



**AXOR Montreux**  
**2-Handle Freestanding Tub Filler Trim with Cross Handles and 1.8 GPM Handshower**  
 Finishes : **chrome**    Part no. : **16562001**



## Spare parts list

Year of production: >01/19

| Pos. | Description                                     | Part no. | PC | PU |
|------|---|----------|----|----|
| 1    | handle  | 16597000 | 0  | 1  |
| 2    | set of screw covers, cold / hot water / neutral | 97987000 | 0  | 1  |
| 3    | sleeve  | 97993000 | 0  | 1  |
| 4    | aerator M22x1 (25 l/min)                        | 98575000 | 0  | 1  |
| 5    | shut off unit right closing                     | 94009000 | 0  | 1  |
| 6    | set of non return valves DW 15                  | 94074000 | 0  | 1  |
| 7    | selector  | 98591000 | 0  | 1  |
| 8    | noise reduction                                 | 96429000 | 0  | 1  |
| 9    | pillar union                                    | 98856000 | 0  | 1  |
| 10   | sliding gear lever                              | 98594000 | 0  | 1  |
| 11   | O-ring 16x2                                     | 98133000 | 0  | 1  |
| 12   | shower base                                     | 98590000 | 0  | 1  |
| 13   | handshower                                      | 04695000 | 0  | 1  |
| 14   | shower hose 1,25 m                              | 28112000 | 0  | 1  |
| 15   | filter packing                                  | 94246000 | 0  | 1  |
| 16   | connecting thread                               | 97220000 | 0  | 1  |
| 17   | O-ring 15x2                                     | 98163000 | 0  | 1  |
| 18   | seal  | 98058000 | 0  | 1  |
| 19   | O-ring 5x2                                      | 98215000 | 0  | 1  |
| 20   | hexagon socket screw M10x35                     | 97670000 | 0  | 1  |
| 21   | O-ring 35x2                                     | 92604000 | 0  | 1  |
| 22   | supply pipe 02/99 - 09/02                       | 97226000 | 0  | 1  |
| 23   | O-ring 44x2,5                                   | 98162000 | 0  | 1  |
| a    | O-ring 9x1,5                                    | 98117000 | 0  | 1  |