

EMI200

NICOR Emergency 20W Inverter Pack

Product Description

The EMI200 is a 20 watt LED emergency inverter-style driver for field installation that enables normal and emergency operation of a switched or non-switched LED fixture. The EMI200 allows for emergency operation of most line-voltage LED fixtures without the need to access wiring within the low-voltage side of the fixture. During a power failure, the EMI200 activates emergency mode to maintain output at 20 watts to the fixture without light degradation for a 90 minute duration. The EMI200 contains a battery, charger, and inverter circuit in a single housing.

Construction

- Heavy duty steel case
- Red powder coat finish
- 24" flexible conduit lead

Electrical

- Constant power design provides 100% lumen output on fixtures up to 20 watts for >90 minutes
- 120/277VAC 50/60Hz input voltage
- Long life high temperature Ni-Cad battery
- Single piece test switch/charge indicator included
- 24 hour recharge time

Installation

- For use with switched or unswitched fixtures
- Rated for damp location
- UL 924 listed for field installation
- Remote mount up to

Warranty

- 5-year limited system warranty standard

PRODUCT INFORMATION

Input Voltage:	120/277 VAC 50/60 Hz
Input Power:	6.5 W (Charging)
Output Voltage:	120 VAC
Output Power:	20W (Constant)
Emergency Operation:	90 Minutes
Operating Temp:	32°F to 122°F (0°C - 50° C)
Weight:	7.2 lbs (3.25 kg)

Compatible NICOR Series*

Residential: DCR, DLRv1-4, DQD, DQR, DRD, DLS

Gimbal: DEB, DGD, DLG, DCG

Commercial Downlights: CLR, CDR

Linears/Wraps: WPC

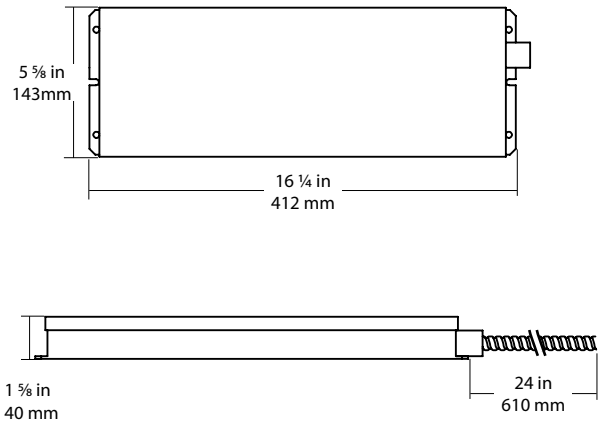
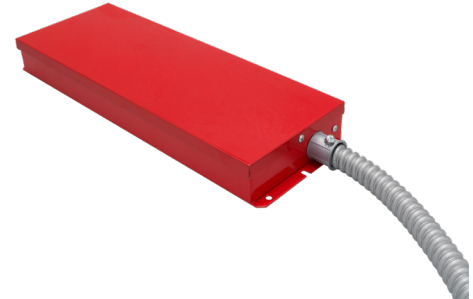
**Not a complete list. Check compatibility before installation.*

Project

Catalog

Type

Date



Ordering Information

Example: EMB200-1-UNV

Series	Version	Voltage Input
EMI200	1 (Version 1)	UNV (120/277VAC)

Specifications and dimensions subject to change without notice