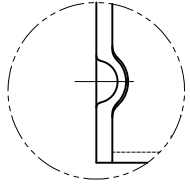
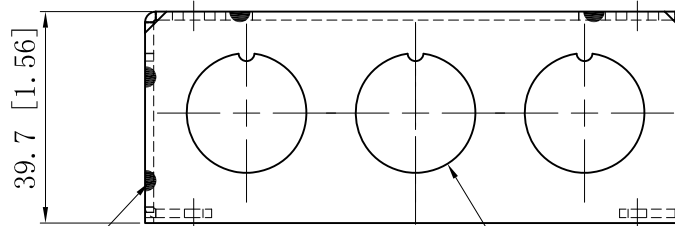


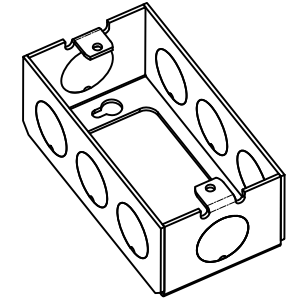
SIDES	BOTTOM
8 1/2" KNOCKOUTS	
Material: Steel-0.0625"-G60 Galvanized	



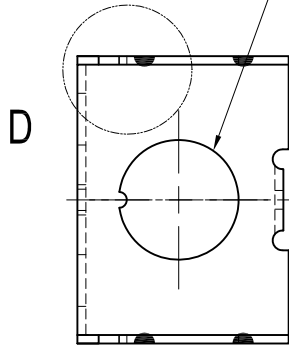
WELDING STYLE DETAIL VIEW D 12 PLACES SPOT WELDING



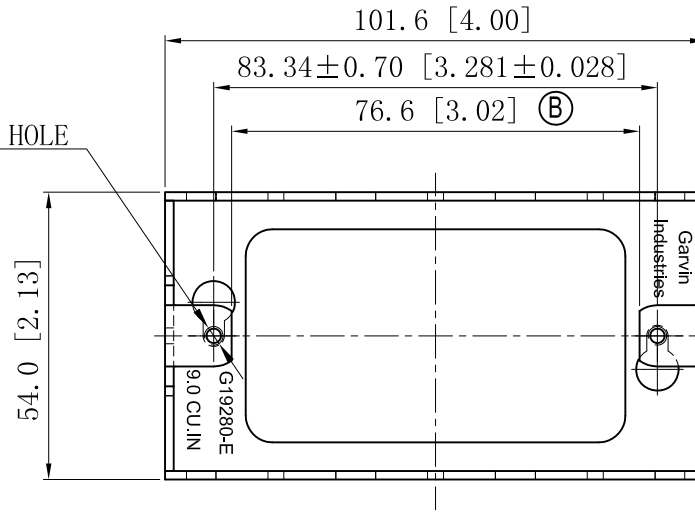
6 1/2" KNOCKOUTS $\phi = 22.5$ [$\phi = 0.89$]
MIRROR



2 1/2" KNOCKOUTS $\phi = 22.50$ [$\phi = 0.886$]
MIRROR



2-#6-32 UNC HOLE



This data sheet is for reference only .GARVIN INDUSTRIES reserves the right to make changes to the design without prior notice.

DESCRIPTION
TRADE REFERENCE TERMS

STANDARD PACKING	<h1>GARVIN INDUSTRIES</h1>		
50 PCS			
TITLE	HANDY UTILITY BOXES & EXTENSION RINGS		
SIZE	DWG NO.		REV
A4	G19280-E		B
DATA SHEET			