

SLOAN® Pressure Assist Toilet Installation Instructions

THE RIGHT CHOICE

We thank you for your purchase. Our products are 100% tested but should you have any questions, please contact us by phone or visit our website.



RECOMMENDED TOOLS AND MATERIALS

- 10" Adjustable Wrench • Level • Screwdriver
- Putty Knife • Sponge • 1/2" Nut Driver or Socket
- Safety Glasses • Hacksaw • Wax Seal or Outlet Gasket
- Supply Shut-Off Valve • Tape Measure • Tubing Cutter
- Flexible/braided hose or copper line water supply with 7/8" connector

BEFORE YOU BEGIN

1. Observe all local plumbing and building codes.
2. Carefully inspect the new toilet and components for damage.

NOTE: Porcelain toilets are extremely fragile. Please handle with care to avoid breakage.

3. Plumbing system requirements:
Minimum supply pressure:
1.6 gpf/6.0 Lpf & 1.28 gpf/4.8 Lpf – 20 psi
1.0 gpf/3.8 Lpf – 25 psi
Maximum water supply pressure: 80 psi

1. REMOVAL OF EXISTING TOILET

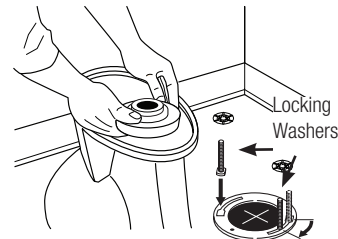
- Turn the water supply off. Flush the toilet, and sponge out any remaining water.
- Disconnect the water supply connection.
- Remove the bolt caps and nuts, the toilet, and T-bolts from the closet flange.
- Cover drain with rag to prevent sewer gases from entering the restroom and scrape off the old wax seal from the closet flange.

!WARNING! Hazardous gases can escape through the closet flange if new toilet is not installed quickly. A temporary fix: place a large rag in the closet flange.

2. INSTALLING NEW TOILET BOWL

- Insert new T-bolts into closet flange.
- Set the toilet bowl on its side or upside down on protective padding.
- Place and press a new wax seal around the toilet bowl outlet horn.
- Remove the temporary rag (if used) from the closet flange.

- Carefully align and lower the toilet flange over the T-bolts.
- Evenly apply your full body weight onto the top of the toilet bowl until it makes full contact with floor to seal.



IMPORTANT Do not lift or rock the toilet after placement. A new gasket must be installed if the seal is broken.

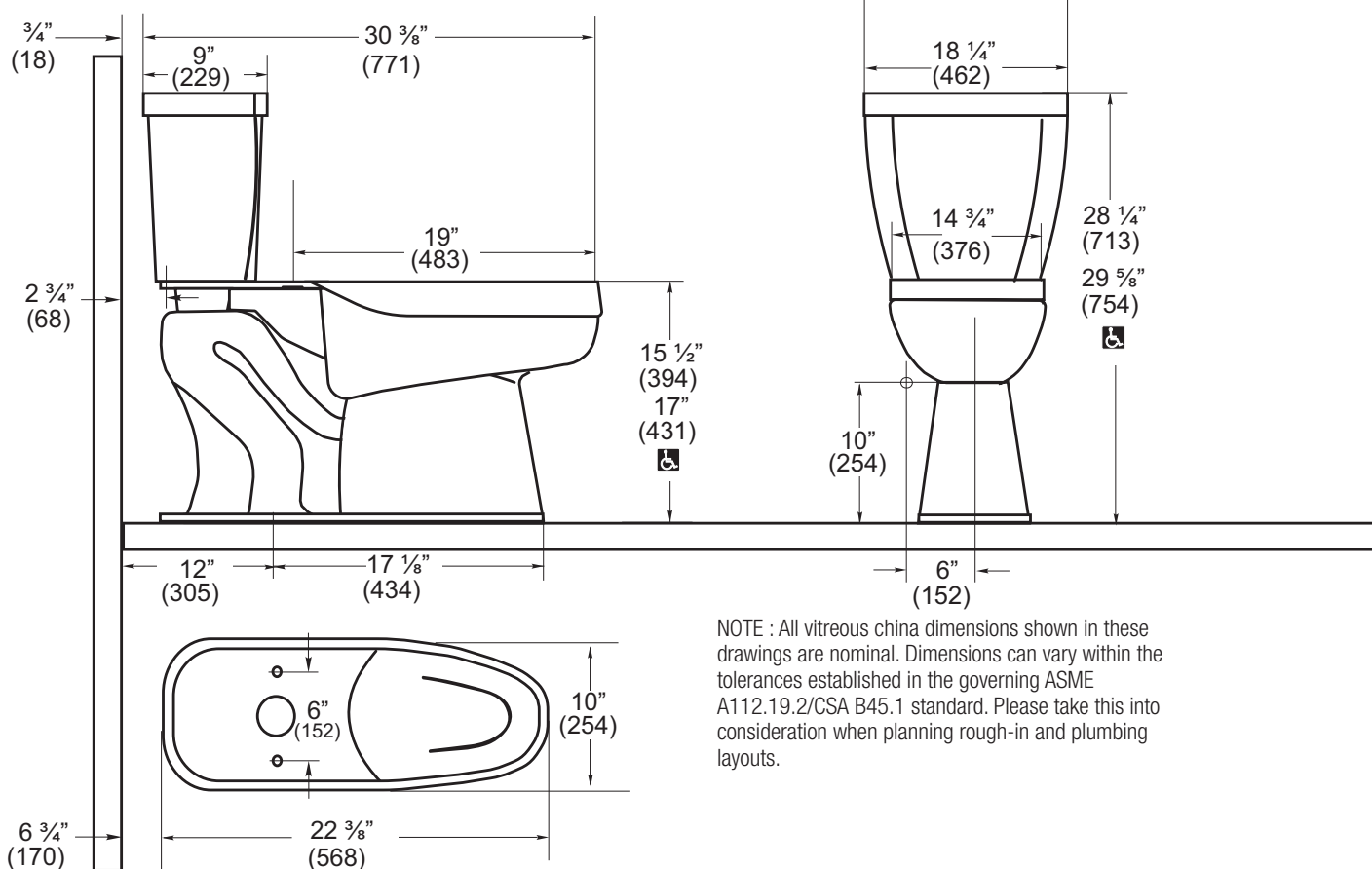
- Place the plastic bolt cap bases, washers, and nuts onto the T-bolts.
- Alternately tighten the nuts until snug. Verify that toilet is leveled.

IMPORTANT Do not overtighten the nuts, breakage and chipping can occur.

- If the bolts extend more than 1/4" (6 mm) from the top of the nut, cut off any excess with a hacksaw, and file the cut edges.

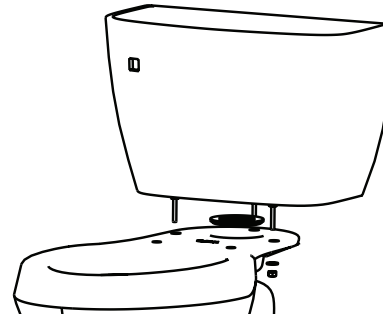
IMPORTANT Product damage can occur if using a sawblade to cut off the excess T-bolt length. Make sure vitreous china is protected and covered.

- Snap the bolt caps over the bolt onto the cap base.



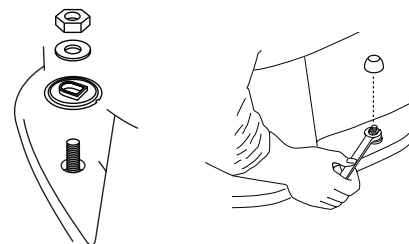
3. INSTALL TANK TO BOWL

- Turn the tank upside down and rest on protective padding.
- Install the tank gasket over the bottom threads of the flush valve making sure that the tank gasket covers the flush valve nut and the tapered side is toward the bowl.
- Lift the tank, right side up and lower the onto the bowl by centering the gasket and aligning the tank bolts over the corresponding holes on the bowl.



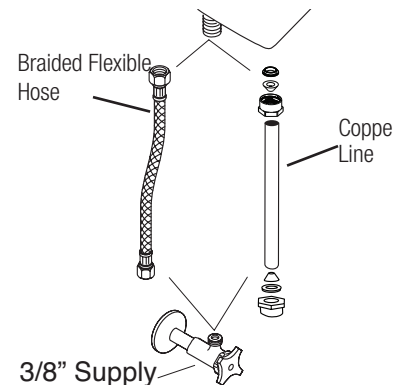
- Secure with metal washers and nuts (see illustration).
- Tighten bolts alternately to achieve a watertight seal at the gasket and ensure the tank is level.

IMPORTANT Do not overtighten the nuts, breakage and chipping can occur.



4. CONNECT WATER SUPPLY LINE

- Connect the water supply valve to the inlet supply valve on the bottom of the toilet tank.
- NOTE:** Braided flexible hose or rigid copper line (not supplied) can be used.
- Open the water supply valve, flush the toilet several times and check for leaks at the connections and the base of the tank.
 - If desired place a bead of caulk (not supplied) around the base of the toilet bowl where it contacts the floor.



5. INSTALL TANK LID AND SEAT

- Place lid onto tank and install toilet seat (not included) according to seat manufacturer's instructions.

SLOAN PRESSURE ASSIST TOILET TROUBLESHOOTING GUIDE

1. Poor Flush.

- A. Check the overall height of the lever in comparison to the frame, and adjust if required.
- B. Make sure water supply valve is fully open.
- C. Flush the supply line to clear any debris and clean inlet screen.
- D. Check bowl (main jet, rim holes and trapway), drain line, and vent for blockage.
- E. Check water pressure supply, operating range is 20-80 PSI (503 Series), 25-80 PSI (504 Series).

2. Pressure vessel takes a long time to fill.

- A. Make sure water supply valve is fully open.
- B. Flush the supply line to clear any debris and clean inlet screen.
- C. Check water pressure supply, operating range is 20-80 PSI (503 Series), 25-80 PSI (504 Series).

3. Noisy pressure vessel water refill.

- A. Flush the supply line to clear any debris and clean inlet screen.
- B. Flush the toilet and hold the handle down for 30 to 40 seconds to flush the system.

4. Water continues to flow through the vessel and will not refill.

- A. Check the overall height of the lever in comparison to the frame, the cable connection to the frame and lever, and adjust if required.
- B. Make sure water supply valve is fully open.
- C. Flush the supply line to clear any debris and clean inlet screen.
- D. Check cartridge and adjust if required.

5. Handle does not activate flush.

- A. Check the cable cassette connection to handle the cable connection to the frame and lever, and adjust if required.
- B. Make sure water supply valve is fully open.
- C. Flush the supply line to clear any debris and clean inlet screen.

6. If the water rises in bowl during the flush and stays there, or drains slowly.

- A. Check bowl (main jet, rim holes and trapway), drain line, and vent for blockage.

7. Leaking tanks.

- A. Check the tank-to-bowl gasket to ensure it is aligned properly and tighten the tank bolts.
- B. Check tank for cracks. If cracked the tank must be replaced.
- C. Check tank bolts. Rubber washers may be corroded or bolts may be loose. Replace or tighten as necessary.

NOTE: be careful not to overtighten nuts on tank as this may result in cracking the tank.

NOTE: It is normal to have some residual water (less than 1") inside the tank. The vessel is equipped with a drain valve to drain off excess water.

8. Cleaning and Maintenance

Clean water closet at least once per week with a cleaner safe for vitreous china. Spray and wipe clean using soft cloth. Soft abrasive cleaners may be used to remove stains. If you live in a hard water area, you should make certain that the holes under the rim are kept clean and free of mineral build up for proper bowl performance. Use a long-handled brush to clean the rim holes. Make sure to periodically clean the in-line filter located in the water inlet of the water supply valve.

CAUTION: Do not use any in-tank cleaners or deodorizers. Products containing chlorine (calcium hypochlorite) can seriously damage the Flushmate as well as the fittings in your tank. This damage can cause leakage and property damage. For more complete up-to date information please visit us at www.sloan.com.

If further assistance is required, If you should still have trouble contact Sloan Technical Support at: 1-888-SLOAN-14 (1-888-756-2614)

LIMITED WARRANTY

Sloan Valve Company warrants its products to be made of first class materials, free from defects of material or workmanship under normal use and to perform the service for which they are intended in a thoroughly reliable and efficient manner when properly installed and serviced, for a period of three years (one year for special finishes) from date of purchase. During this period, Sloan Valve Company will, at its option, repair or replace any part or parts which prove to be thus defective if returned to Sloan Valve Company, at customer's cost, and this shall be the sole remedy available under this warranty. No claims will be allowed for labor, transportation or other incidental costs. This warranty extends only to persons or organizations who purchase Sloan Valve Company's products directly from Sloan Valve Company for purpose of resale.

THERE ARE NO WARRANTIES WHICH EXTEND BEYOND THE DESCRIPTION ON THE FACE HEREOF. IN NO EVENT IS SLOAN VALVE COMPANY RESPONSIBLE FOR ANY CONSEQUENTIAL DAMAGES OF ANY MEASURE WHATSOEVER.

NOTE: IN NO EVENT SHALL THE SLOAN VALVE COMPANY BE LIABLE FOR INCIDENTAL DAMAGES, RESULTING FROM IMPROPER INSTALLATION, OR FOR DAMAGES CAUSED BY NEGLIGENCE, ABUSE OR ALTERATION.

The information contained in this document is subject to change without notice.

SLOAN
10500 Seymour Avenue
Franklin Park, IL 60131
Phone: 1-800-9-VALVE-9 (982-5839)
or 1-847-671-4300
Fax: 1-800-447-8329 or 1-847-671-4380
www.sloan.com
Copyright © 2018 Sloan Valve Company
Code No. 0816202 Rev.1 (4/18)