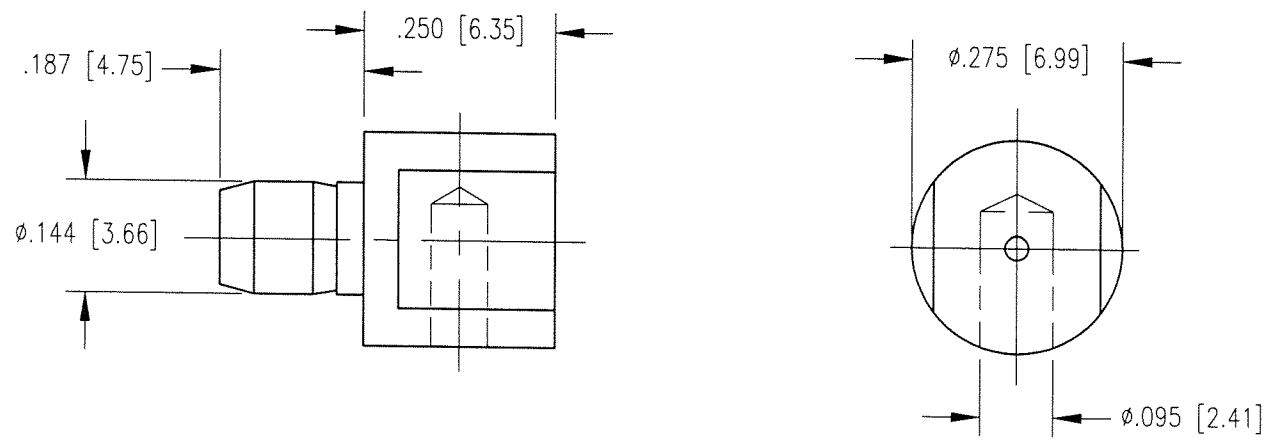



DWC NO.		01302	
REV	DESCRIPTION	BY DATE	APPRO
A	RELEASE PER NPR 2094	11/00/99 HW	HW



NOTES:

1. MATERIAL:  
BODY: BRASS PER ASTM B16
2. FINISH:  
BODY: TRI-METAL
3. FOR USE WITH 14 AWG WIRE.

PER ASME Y14.5M-1994 UNLESS OTHERWISE SPECIFIED, DIMENSIONS ARE IN INCHES [MM]				<b>Litton</b> <b>Winchester/Retconn</b> 400 Park Road Watertown, Connecticut 06795	
TOLERANCES: DECIMALS .xx ± .01/0.254 .xxx ± .005/0.127 ANGLES ± 2° SCALE: 4:1					
<b>CUSTOMER DRAWING</b>				TITLE	
DRAWN KJT		DATE 08/02/00		DATE 10/24/00	
CHECKED MJF		DATE 10/24/00		DATE 10/24/00	
APPROVED KJT		DATE 10/24/00		DATE 10/24/00	
APPROVED JED		DATE 10/24/00		DATE 10/24/00	
A		01302		SHT. OF REV. 1 1 A	