

Fasteners and Fastener Tools

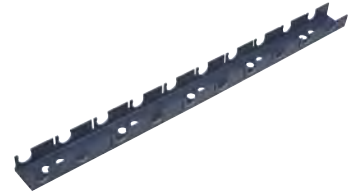
Fasteners and Fastener Tools

PEX rails secure Uponor PEX pipe to metal and wood support structures.

Note: Suitable fastening hardware is required (not included).

Part no.	Part description	Pkg. qty.
A5700500	½" PEX Rail, 6.5 ft.	16
A5700625	⅝" PEX Rail, 6.5 ft.	16
A5700750	¾" PEX Rail, 6.5 ft.	16

PEX rails



PEX clips provide excellent holding power. The ⅜" and ½" can attach together laterally for tight installations. PEX clips attach under the wood subfloor for joist-heating applications. The clips prevent the pipe from coming in direct contact with the subfloor, eliminating the possibility of creating uncomfortable hot spots on the floor above. Drywall screws are commonly used to secure the clips to the wood subfloor.

Note: Select a screw length that does not penetrate entirely through the wood subfloor once installed.

Part no.	Part description	Pkg. qty.
F7060375	⅜" PEX Clip, 100/pkg.	1
F7051258	½" PEX Clip, 100/pkg.	1
F7057500	¾" PEX Clip, 100/pkg.	1
F7051001	1" PEX Clip, 50/pkg.	1

PEX clips



Tube talons secure ⅜", ½", ⅝", ¾" and 1" Uponor PEX pipe. Fasteners are included.

Part no.	Part description	Pkg. qty.
F7050375	Tube Talon (⅜" PEX), 100/pkg.	1
F7050750	Tube Talon (½", ⅝", ¾" PEX), 100/pkg.	1
F7051000	Tube Talon (1" PEX), 50/pkg.	1

Tube talons

