

## APP USER GUIDE



**24/7 HELP** For 24/7 customer support, visit [feit.com/help](http://feit.com/help)

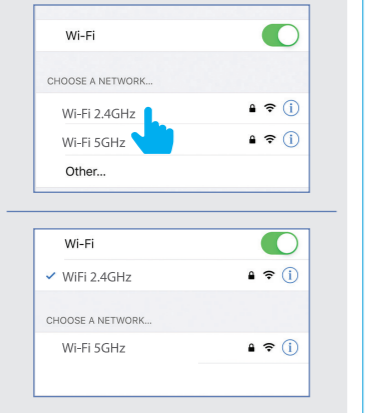
**System Requirements**  
Minimum: iOS 9.3, Android™ 4.4 KitKat® or higher  
- Dedicated 2.4GHz Wi-Fi Network -

Your screen images may differ from this user guide.

### BEFORE USING THIS USER GUIDE SEE INCLUDED INSTALLATION GUIDE FOR PROPER PRODUCT INSTALLATION.

NOTE: Only works with 2.4GHz Wi-Fi networks.

Go to your Wi-Fi settings and connect your phone to your 2.4GHz Wi-Fi network.

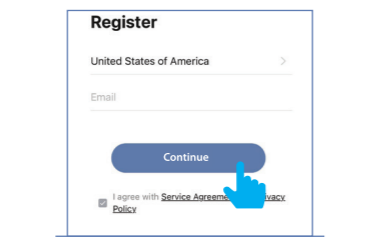


1 Download the **Feit Electric App**.

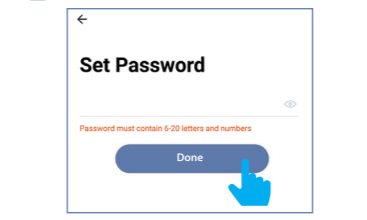
Download on the App Store | GET IT ON Google Play

### Set Up Device

2 Launch the **Feit Electric App**. Enter email address to register or log into your account. Then tap **Continue**. A verification code will be sent to your email.

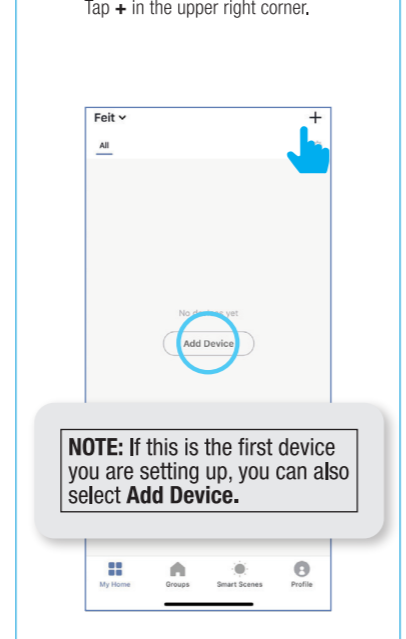


3 Create a password then tap **Done**.

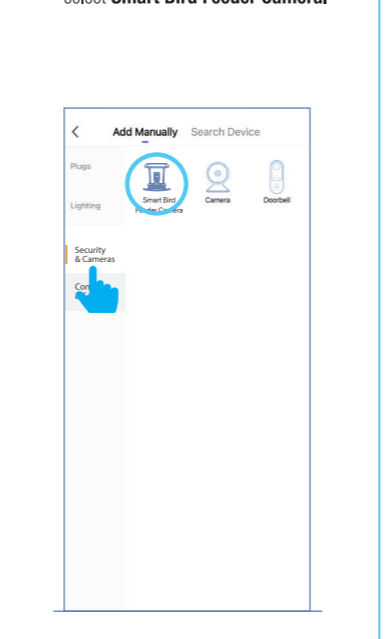


### 4 Adding Device

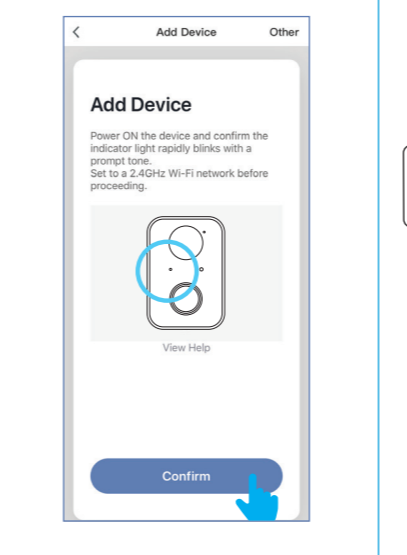
Tap + in the upper right corner.



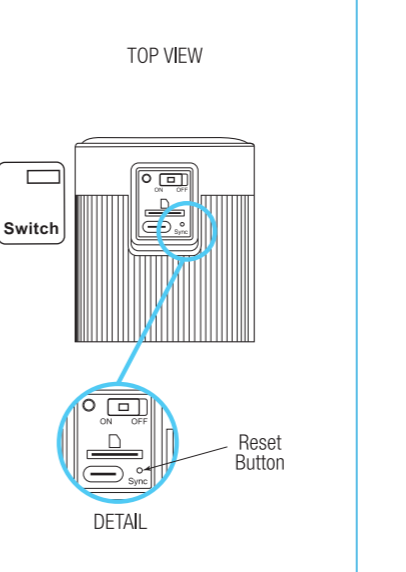
### 5 Tap Security & Cameras and select Smart Bird Feeder Camera.



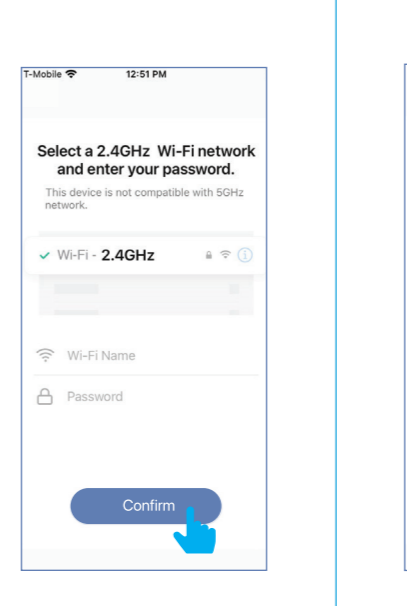
### 6 The first time you power up the Smart Bird Feeder Camera, it will automatically go into pairing mode. The LED indicator light will blink blue. Tap Confirm to continue.



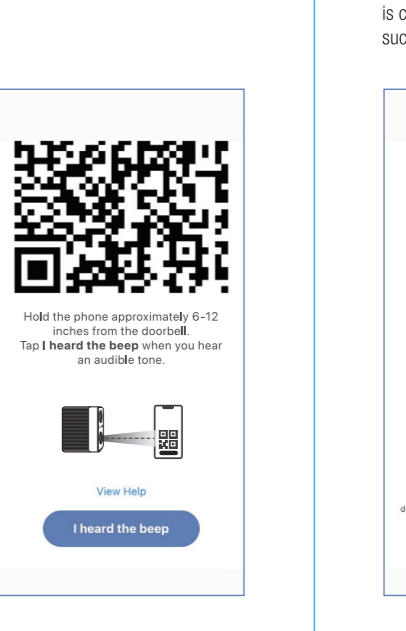
### 7 If the LED is not blinking blue, press and hold the Reset Button for 15 seconds or until you hear an audible tone. If it is blinking red move to step 8.



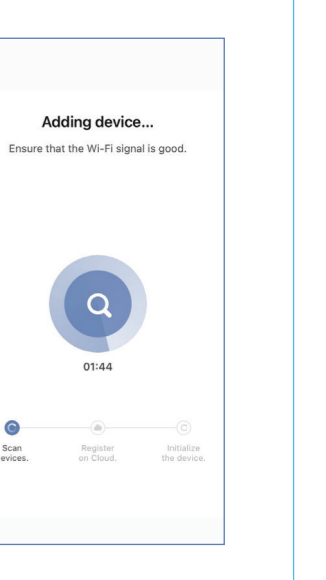
### 8 After confirming that you are on a 2.4GHz Wi-Fi network, enter your password then tap Confirm.



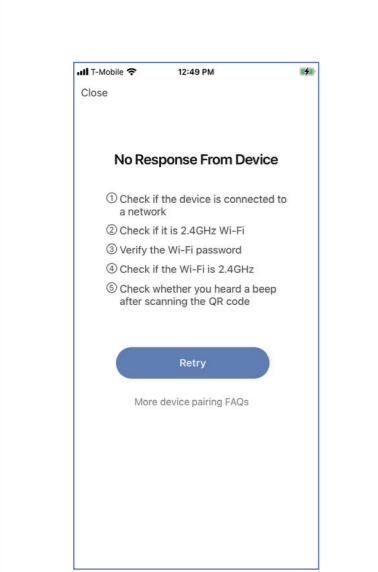
### 9 Next, use the QR code to connect. Follow the instructions in the image below.



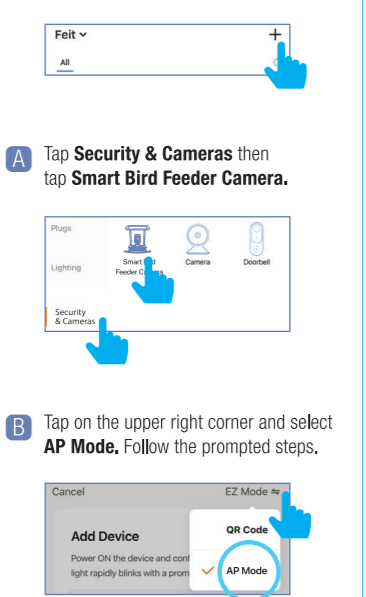
### 10 The Adding device status window will appear. Wait until the connection is complete. If the device is added successfully move to step 13.



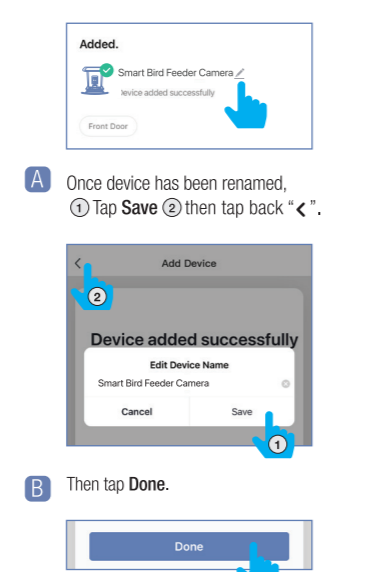
### 11 If you see this error message, check the troubleshooting options below, then **Retry**.



### 12 Alternate connection option is available. Tap + in the upper right corner.

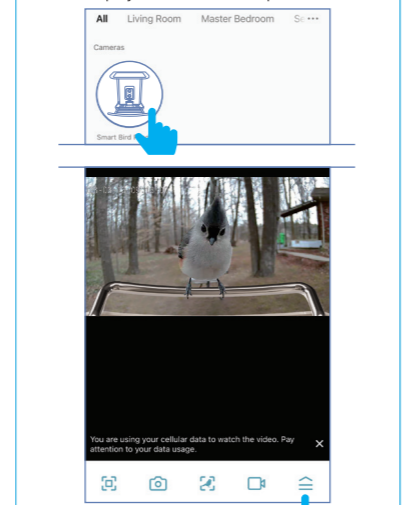


### 13 Once device is successfully added, tap the Pen icon to rename the device. Then save the name and tap **Done**.

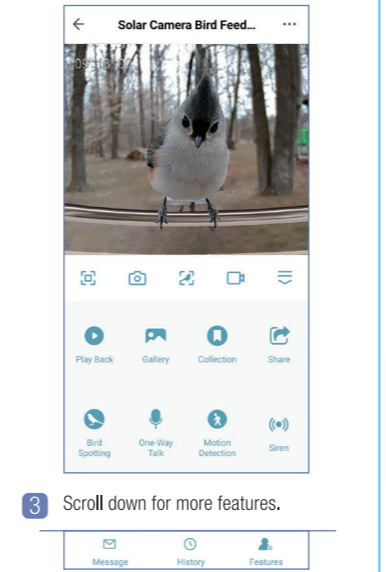


### Use Device

#### 1 Tap the Smart Bird Feeder Camera icon. Then tap the up arrow icon on the lower right-hand side of your screen to display the entire control panel.

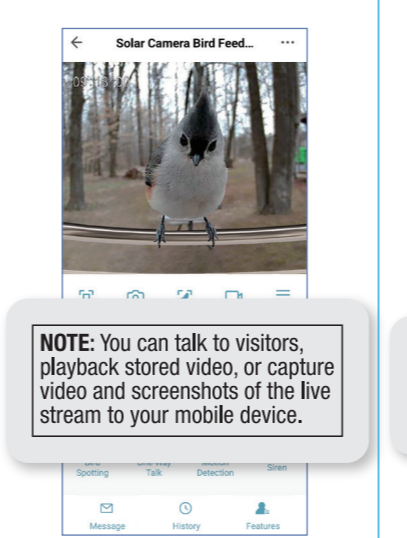


#### 2 From the control panel you can access features and control your Smart Bird Feeder Camera.

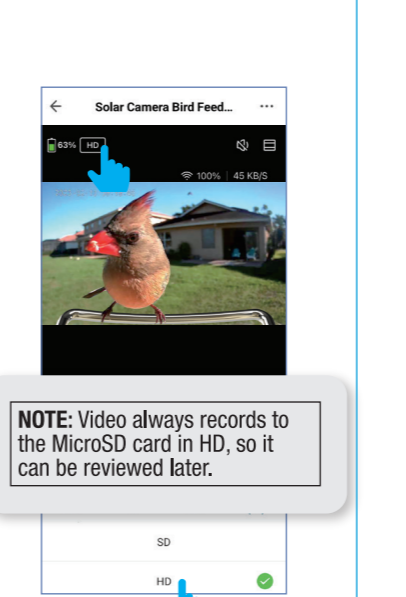


#### 4 See Live Streaming

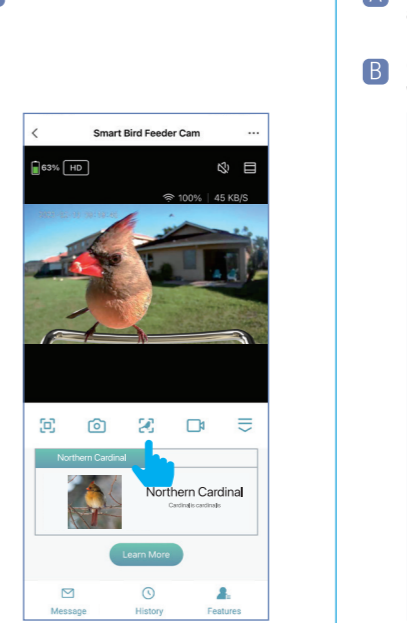
You will see live streaming video from your camera and be able to take action if needed.



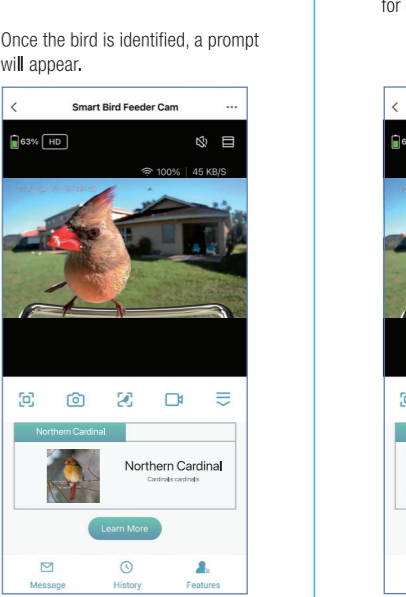
#### 5 Select HD or SD video quality to view on the device screen.



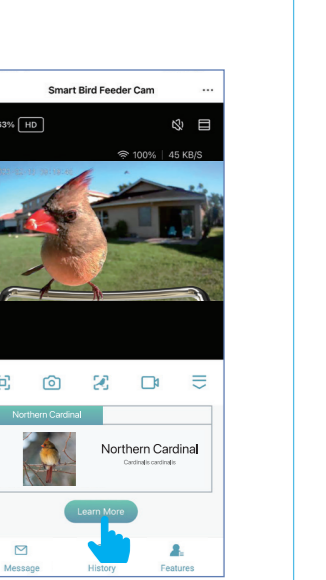
#### 6 Tap the bird genius icon.



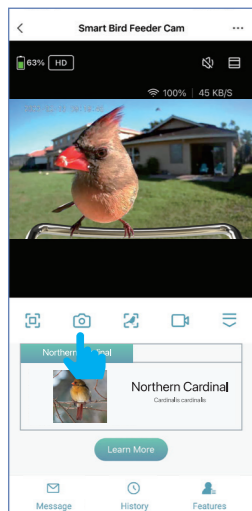
#### A The bird genius AI will go into loading as it generates an identification.



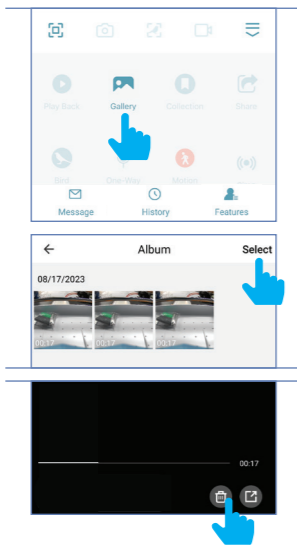
#### C Tap **Learn More** to be redirected to your species' Wikipedia page for detailed information.



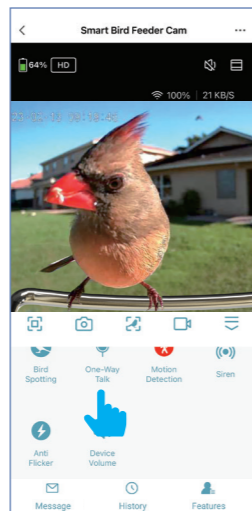
**7 Screenshot**  
Tap the **Camera** icon to take a screenshot and save it to your **Album**.



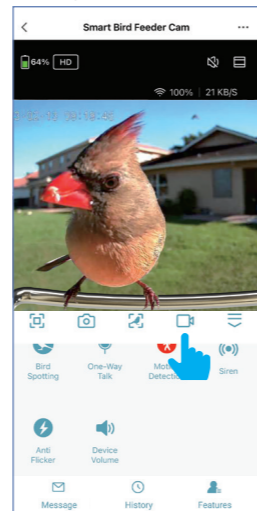
**A** To view a screenshot, tap **Gallery**. To delete an image, tap **Select** in the upper right-hand corner. Select an image by tapping it, then tap the **Trash** icon.



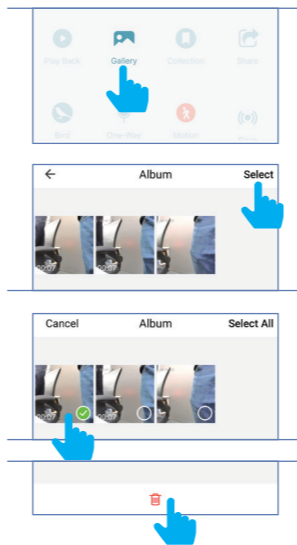
**8 Talk**  
Tap **One-Way Talk** to speak to visitors. Press and hold the microphone icon to talk.



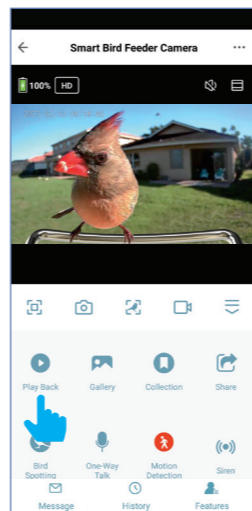
**9 Capture Video**  
Tap the **Video** icon to manually record. A stop icon will appear once recording has begun. Tap the stop icon to cease recording and save video to **Album**.



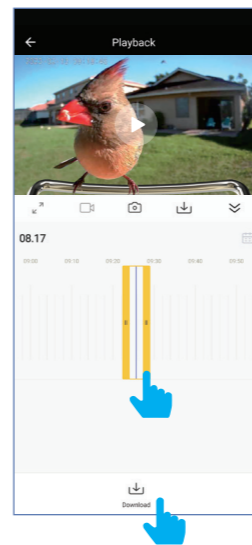
**A** To view a video, tap **Gallery**. To delete a video tap **Select** in the upper right-hand corner. Tap the video you would like to delete, then tap the **trash icon**. Tap the **Share** icon to share the video.



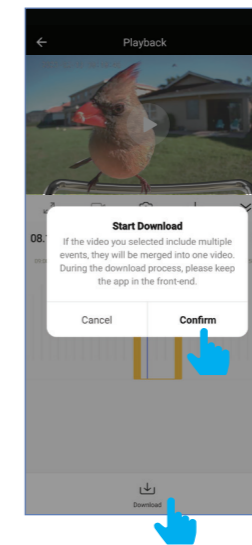
**10 Playback**  
Tap **Playback** to view recording or screenshots or download events from your local MicroSD card.



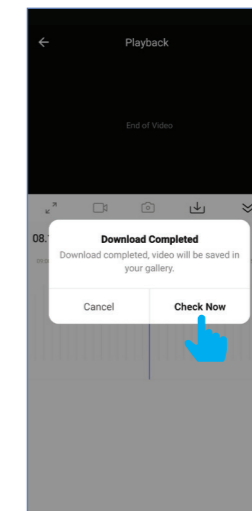
**A** Tap the **Download** icon. Drag the yellow time bar to cover the time frame of the video you would like to play back.



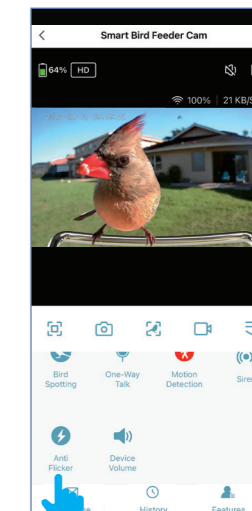
**B** Tap **Download** at the bottom of the screen, then tap **Confirm**.



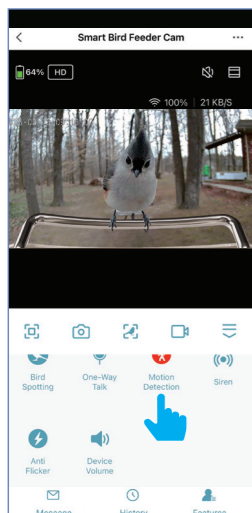
**C** After the video has been downloaded, tap **Check Now**. Select the video and press play to view.



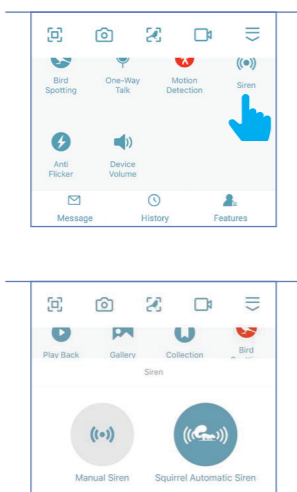
**11 Anti Flicker**  
Tap **Anti Flicker** to adjust resolution. Choose between 50Hz and 60Hz.



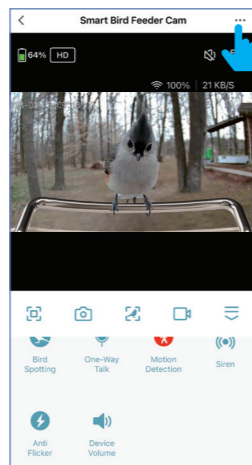
**12 Motion**  
Tap **Motion Detection** to turn the motion detection ON or OFF.



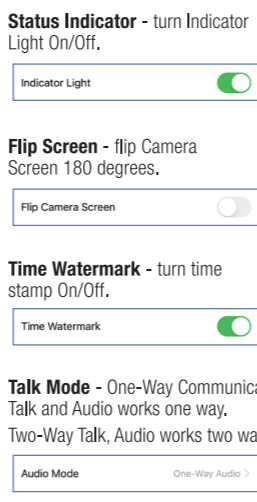
**13 Siren**  
Tap **Siren** then select between Manual Siren and Squirrel Automatic Siren to set the siren. Squirrel Automatic Siren will trigger when a squirrel is detected.



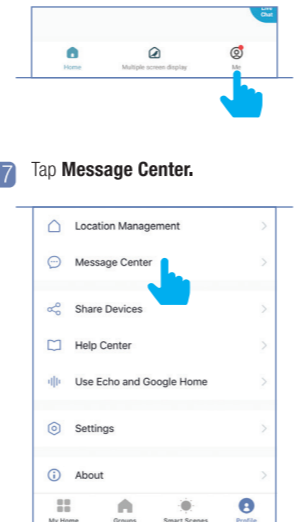
**14 Device Settings**  
Device Settings are available on the control panel by tapping the ellipses (...) icon in the upper right hand corner. Device Settings include: Basic Settings, Advance Settings, Storage and Others.



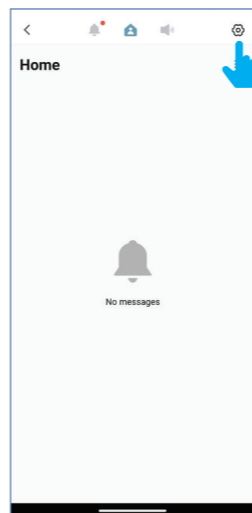
**15 Adjust Basic Function Settings**  
From the device Settings, tap **Basic Function Settings**.



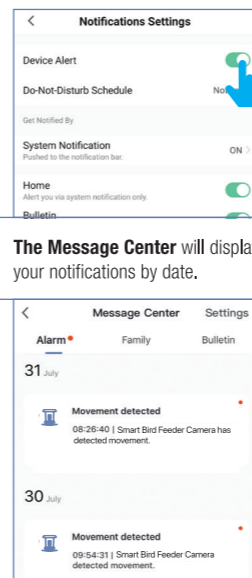
**16 Notifications**  
To enable push notifications, exit the control panel then tap **Me** at the bottom of screen.



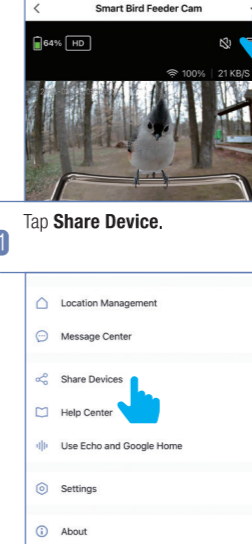
**18** Then tap the **Settings** icon in the right upper right-hand corner of the screen.



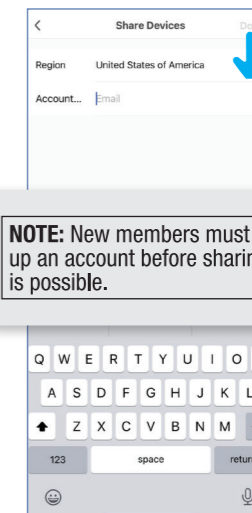
**19** Tap the toggle button next to **Device Alert**.



**20 Device Sharing**  
From the Home Page tap the ellipses (...) icon in the upper right-hand corner.



**22** Enter the email address then tap **Done**.



**NOTE:** New members must set up an account before sharing is possible.

**Need Help?**

Please refer to our online resources at [www.feit.com/help](http://www.feit.com/help) to learn about more features & latest updates