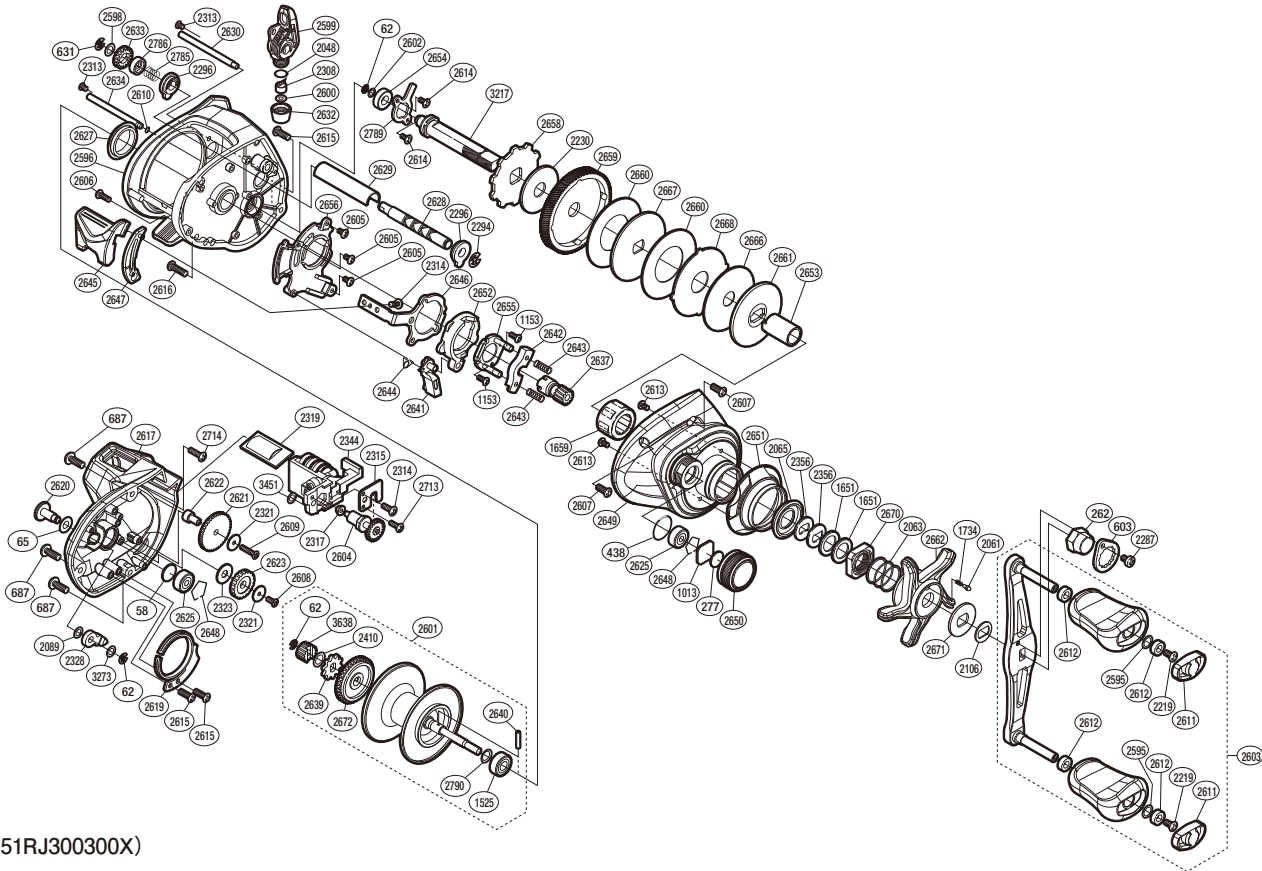


SHIMANO

TEKOTA

TEKA300HGLC



(51RJ300300X)

#	Part No.	Description	#	Part No.	Description	#	Part No.	Description
58	10GEU	Spacer B	2595	1003Z	Washer	2641	101J2	Clutch Pawl
62	105NK	E Lock	2596	100V1	Frame Assembly	2642	1046X	Yoke
65	104H2	Spacer A	2598	10S42	Spacer	2643	104BC	Yoke Spring
262	10FT1	Handle Nut	2599	100UY	Line Guide Assembly	2644	101J3	Clutch Pawl Spring
277	10896	Cast Control Spacer	2600	1003S	Washer	2645	101J4	Clutch Button
438	108WK	O Ring	2601	100UZ	Spool Assembly	2646	101J9	Clutch Plate
603	10LMC	Handle Nut Plate	2602	1003V	Washer	2647	101TK	Clutch Bar Guide B
631	105NC	E Lock	2603	100V2	Handle Assembly	2648	1054D	Bearing Retainer
687	103GP	Screw	2604	100V0	Counter Gear Assembly	2649	100FU	Right Side Plate
1013	1085F	Spool Tension Spacer	2605	10SUT	Screw	2650	10234	Cast Control Cap
1153	10LVJ	Screw	2606	10MT9	Screw	2651	10253	Clutch Button Attachment
1525	105CA	Ball Bearing	2607	101GR	Screw	2652	10254	Clutch Cam
1651	10J1N	Star Drag Spacer	2608	100UL	Screw	2653	10250	Roller Clutch Inner Tube
1659	10F37	Roller Clutch Bearing	2609	10SUS	Screw	2654	10BQ7	Drive Shaft Bushing
1734	10BT2	Click Spring	2610	108WW	O Ring	2655	10QVM	Clutch Cam Retainer
2048	108WQ	O Ring	2611	10SS2	Handle Knob Seal	2656	10251	Clutch Guard
2061	10MFC	Click Pin	2612	10PXZ	Handle Knob Bushing	2658	10D73	Anti-Reverse Ratchet
2063	10A70	Star Drag Spring	2613	10LA3	Screw	2659	101H4	Drive Gear
2065	10C69	Roller Clutch Water Proof	2614	10LCT	Screw	2660	1025D	Drag Washer
2089	10GHP	Washer	2615	10LFN	Screw	2661	1025E	Key Washer
2106	107QN	Drive Shaft Shield	2616	10LHY	Screw	2662	10232	Star Drag
2219	10LFA	Screw	2617	10T79	Left Side Plate	2666	1024D	Drag Washer
2230	1025A	Drag Washer	2619	10237	Click Spring	2667	1024E	Key Washer
2287	10LLU	Screw	2620	101H9	Click Button	2668	1024F	Eared Washer
2294	10KHG	E Lock	2621	10238	Idle Gear B	2670	1024H	Star Drag Nut
2296	100GP	Worm Bushing A	2622	10231	Idle Gear B Support	2671	10J22	Click Plate Retainer
2308	10BHQ	Line Guide Pawl	2623	101TN	Idle Gear D	2672	10233	Counter Gear A
2313	10MPD	Screw	2625	105C2	Ball Bearing	2713	10TBS	Screw
2314	10LCL	Screw	2627	1024L	Frame Center Seal	2714	10LF5	Screw
2315	100H8	Counter Frame Plate	2628	101HE	Worm Shaft	2785	10SXP	Worm Shaft Spring
2317	10CYA	Bushing	2629	101H5	Level Wind Guard	2786	10RVK	Worm Shaft Cam
2319	10S8X	Counter Lens Assembly	2630	101M0	Stabilizer Bar A	2789	10RVE	Drive Shaft Retainer
2321	10DT6	Idle Gear B Spacer B	2632	101HC	Pawl Cap	2790	10SYU	Spring
2323	101JK	Idle Gear B Spacer A	2633	101TJ	Idle Gear C	3217	100J6	Drive Shaft
2328	10T84	Click Pawl	2634	101TL	Stabilizer Bar B	3273	100K0	Washer
2344	10117	Counter Unit Assembly	2637	10235	Pinion Gear	3451	10RKQ	Washer
2356	109F5	Drag Spring Washer	2639	101HA	Click Gear	3638	10TCP	Idle Gear A
2410	10S0Q	Washer	2640	10MD1	Spool Clutch Pin			

Please note that the number of adjusting washers may not be the same as shown in the exploded views.
(Adjustment will vary with each individual product.)

(230718)_008