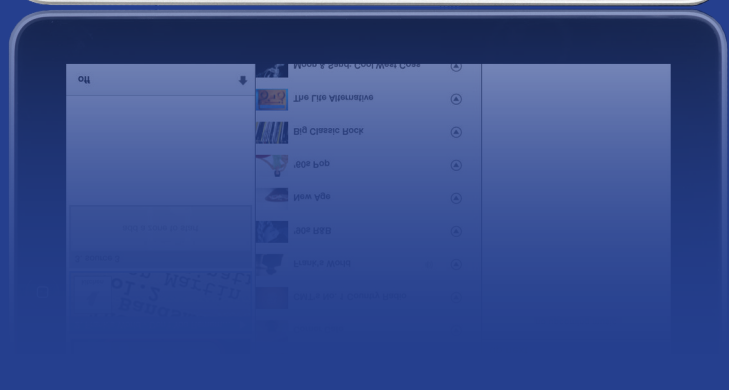
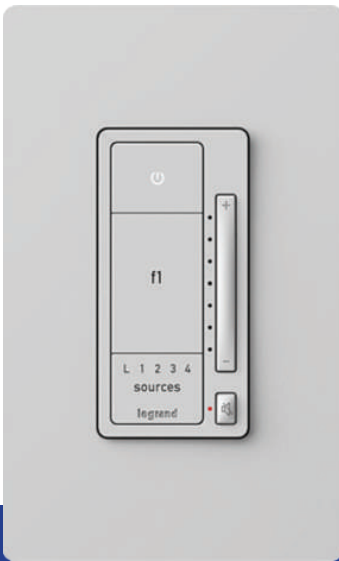


Digital Audio System



FCC Notice – FCC ID

These devices comply with part 15 of the FCC Rules. Operation is subject to the following two conditions: (1) These devices may not cause harmful interference; and (2) these devices must accept any interference received, including interference that may cause undesired operation.

Canadian Department of Communications – IC

These devices comply with Industry Canada license-exempt RSS standard(s). Operation is subject to the following two conditions: (1) these devices may not cause interference; and (2) these devices must accept any interference, including interference that may cause undesired operation of the devices.

These Class B digital apparatus comply with Canadian ICES-003.



301 Fulling Mill Road, Suite G
Middletown, PA 17057
(800) 223-4162

www.legrand.us

© Copyright 2018 by Legrand, Inc. All Rights Reserved.

Table of Contents

System Overview	4	Playing Music with the App	28
Controllers	5	Selecting a Zone (Room) to start Music.....	28
What's in the Enclosure?	6	Selecting Music for your Zone.....	29
Modules.....	6	Selecting a Global Source Input	30
What's in the Wall?	7	Selecting a Local Source Input	31
Keypads & Inputs	7	Adding Digital Services	32
Wall Devices	8	Pandora.....	32
The AU7010 Digital Audio Amplified Keypad	8	TuneIn	33
The AU7007 Global Source Input	9	Rhapsody.....	34
The AU7008 Local Source Input	10	SiriusXM.....	35
The Control App – Getting Around	11	Music Libraries	36
Zones Pane (Rooms).....	11	Downloading the Music Share program	36
Sources Pane.....	12	Entering the pathway	37
Whole House Control	13	Integrating with Alarm.com.....	38
Volume Control.....	14	Navigating the Source Menu	40
Digital Source Selection	15	Selecting Zones	41
Currently Playing.....	16	Zone Setting	41
Transport Controls	17	The Source Page.....	41
Playing Queue.....	18		
The Control App - Settings	19		
Settings	19		
Creating Persistent Groups	20		
Disbanding Persistent Groups	22		
Zones Settings	24		
Naming a Digital Audio Global/Local Source ..	25		
General/About.....	26		
General/About/Software Update	27		

System Overview

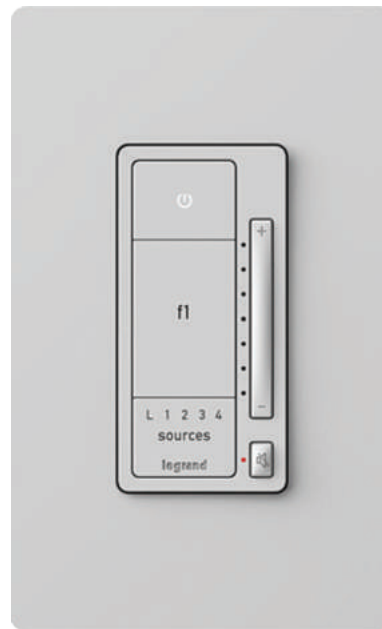
The Digital Audio System distributes four sources to up to sixteen zones, with features such as access to digital audio content from Internet Radio, streaming services, and networked devices, as well as analog components. It is controllable through the system's amplified keypads, as well as convenient iOS and Android apps for mobile devices.

The system begins with the Digital Audio Distribution Module (AU7000) which distributes up to four audio sources to four zones. The audio is digitally transmitted from the sources to a zone's Digital Audio Amplified Keypad (AU7010-XX). This system can be expanded to up to sixteen zones using up to three Digital Audio Expansion Modules (AU7004). Source options include the Digital Input Module (AU7001) which provides access to content such as Pandora, Rhapsody, SiriusXM (subscription needed), and TuneIn, as well as networked iTunes or Windows Media library content, NAS drive music files, and more. Analog sources can also be accommodated with use of the Digital Audio Local Source Input (AU7008-XX) and the Digital Audio Global Source Input (AU7007-XX). The AU7010-XX keypads are the standard power device, providing 20 watts of power to a zone. Common functions like power on/off, volume, mute, and source selection can be controlled directly from this keypad. Additionally, the keypad offers a favorite feature that enables users to set a favorite music or news source at a preferred volume by pressing and holding the favorite button. The keypad will then allow users to press the favorite button and return to that source/volume quickly.

Easy to use, the Digital Audio System is a flexible, feature-rich, and accessible structured wiring audio solution.

Controllers

The Digital Audio System can be controlled by smartphones, tablets and by the AU7010-XX Keypad. For controlling the system via smartphone or tablet, free applications are available for both Android and iOS devices through the Google Play and App Stores. Please search for 'On-Q Digital Audio' to download the app.



Digital Audio Amplified Keypad
AU7010-xx



iOS Tablet and Phone

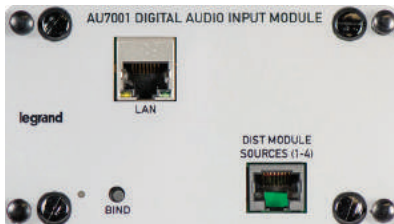


Android Tablet and Phone

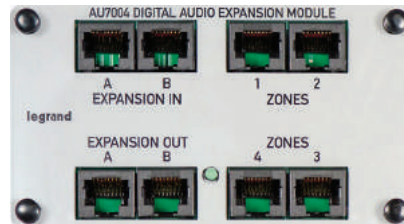
What's in the Enclosure?

Modules

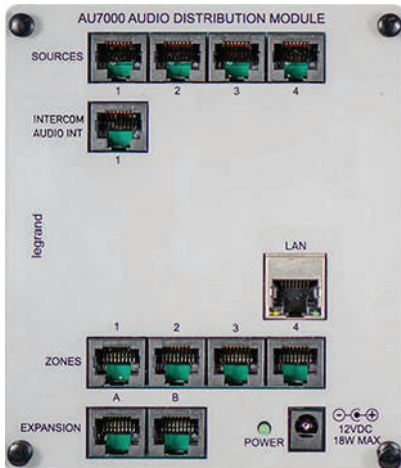
The Digital Audio System is comprised of enclosure-based modules, as well as keypad and input devices located throughout the home. The heart of the system, the Digital Audio Distribution Module (AU7000), as well as the Digital Audio Power Distribution Module (PW1020), are required for every system. Depending on a system's specific configuration, however, the enclosure might also include the Digital Audio Input Module (AU7001) and/or Digital Audio Expansion Module (AU7004). The AU7001 provides access to networked digital audio content and streaming music services. Up to four AU7001 modules can be used within a system. For systems with more than four intended zones, the AU7004 modules can be used to expand the system, in increments of four, to up to 16 total zones.



Digital Audio Input Module
AU7001



Digital Audio Expansion Module
AU7004



Digital Audio Distribution Module
AU7000



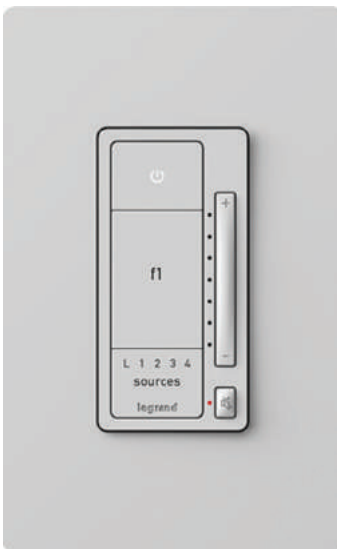
Digital Audio Power Distribution Module
PW1020

What's in the Wall?

Keypads & Inputs

In addition to the enclosure-based modules, every Digital Audio System also includes use of in-wall Digital Audio Amplified Keypads (AU7010-XX) in every zone. Each keypad provides both the amplification for a specific zone, as well as convenient access to core controls, such as power on/off, volume up/down, mute, and source selection. Additionally, the Digital Audio Amplified Keypads also include a Favorite feature, offering quick access to a preferred source/volume setting.

Also installed in a specific zone, a Digital Audio System might include the use of a Digital Audio Global Source Input (AU7007-XX) or a Digital Audio Local Source Input (AU7008-XX). These provide global (full system) or local (the specific zone) access to traditional analog devices, such as Set Top Boxes, TV's, MP3 players, Xbox systems, etc.



Digital Audio Amplified Keypad AU7010-XX



Digital Audio Global Source Input AU7007-XX



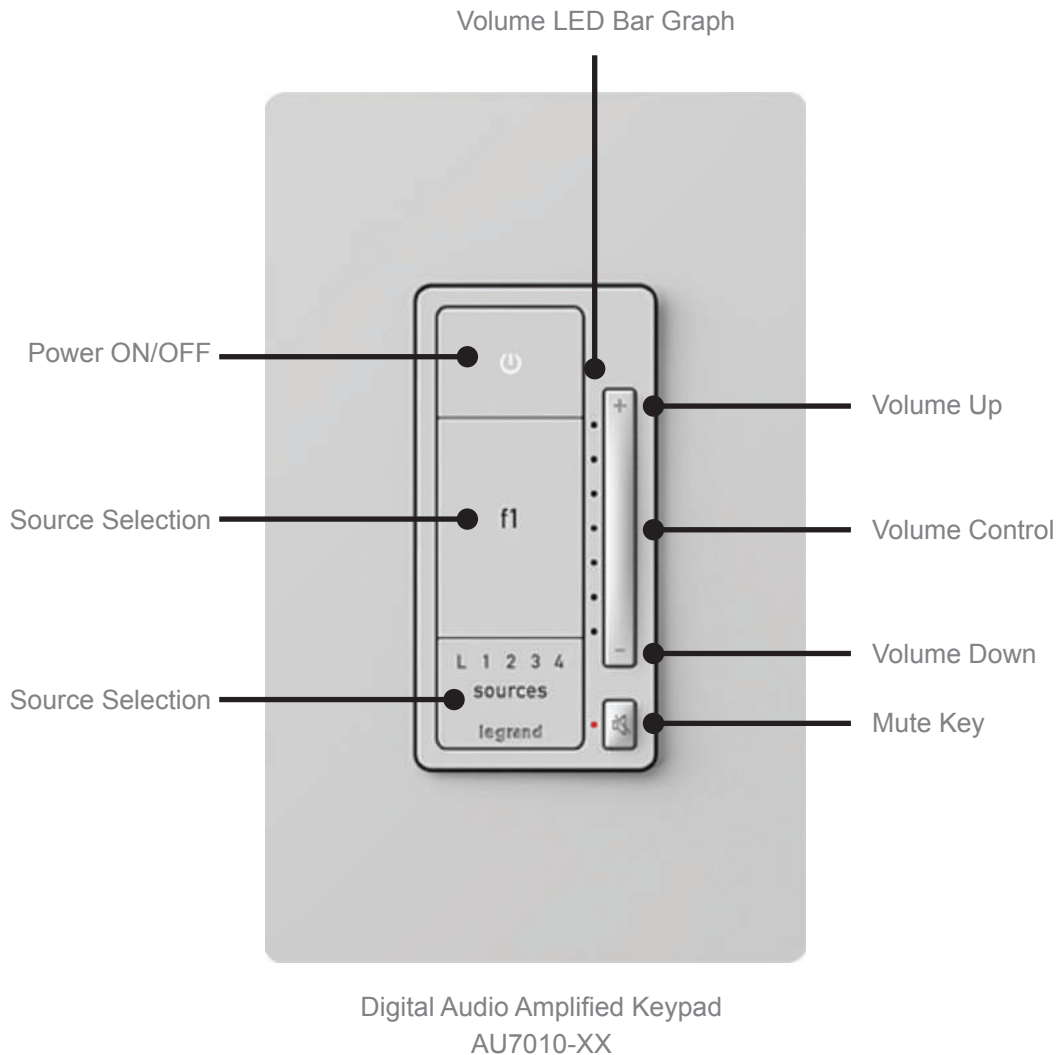
Digital Audio Local Source Input AU7008-XX

The AU7010 Digital Audio Amplified Keypad

The Digital Audio Keypad provides the amplification that powers the speakers in the zone and provides access to core control functions, such as volume up/down, mute, power on/off, source selection, and access to preset favorites.

To set a favorite, select the desired source and adjust the volume to a preferred level, then press and hold the **F1** button until all the lights on the keypad flash indicating the favorite has been set.

NOTE: Wall devices are available in White, Light Almond, and Nickel finishes.



The AU7007 Global Source Input

The Digital Audio Global Source Input (AU7007-XX) introduces analog sources into the Digital Audio System for global access through all zones. Sources connect to the Digital Audio Global Source Input either through a stereo 3.5 mm line cable, in the case of a MP3 player, or through an adapter cable for 3.5 mm to RCA connection, in the case of Cable Box or gaming consoles. The source is then selectable through both keypad and app control.



Digital Audio Global Source Input
AU7007-XX

The AU7008 Local Source Input

Similar to the AU7007-XX, the Digital Audio Local Source Input (AU7008-XX) also introduces analog sources into the Digital Audio System. However, it is for localized access within the specific zone where it is connected. Selection of the AU7008 is done at the keypad via the Source Selection button or through the application.



Digital Audio Local Source Input
AU7008-XX

The Control App – Getting Around

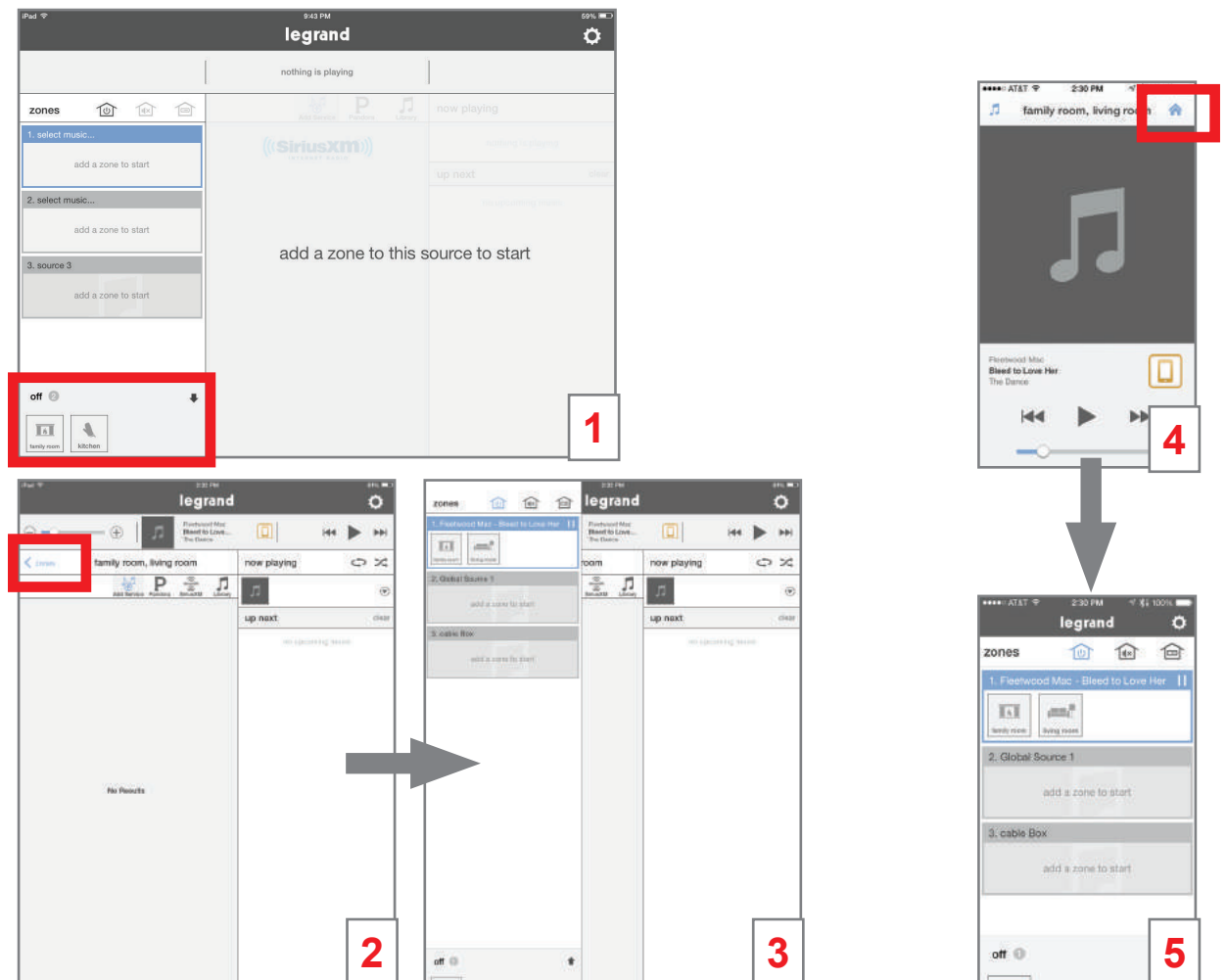
Zones Pane (Rooms)

Offering complete control of a Digital Audio System, the free applications (apps) available for Android and iOS devices provide both simple navigation and a complete view of a system's current status.

It all starts with the zones, or rooms, a system includes. In this example, we will use two zones, the Family Room and the Living Room (Figure 1).

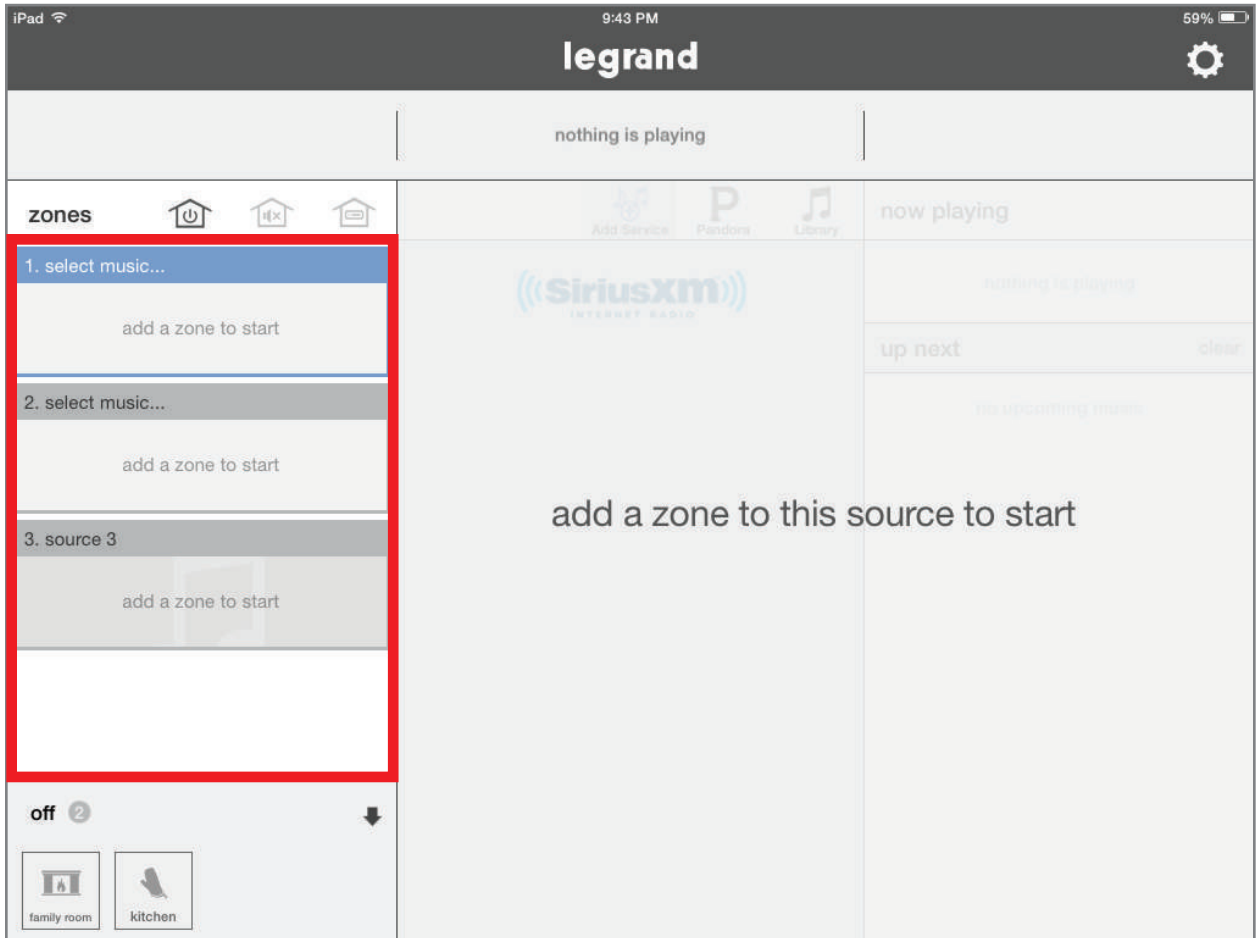
When all zones are off (not playing music), all available zones will display in the bottom left hand corner of the screen.

NOTE: An iPad in portrait mode removes the zone pane from view. Selecting **Zones** will display the panel (Figures 2 and 3). In the case of a smartphone, once content is playing, pressing the **Home** icon will return the app to the zones pane (Figures 4 and 5).



Sources Pane

The Digital Audio System's available sources display on the left hand side of the app screen. The example below shows a system with two Digital Audio Input Modules as source one and source two (identified by "select music..."), and one Digital Audio Global Source (identified by "source 3").



Whole House Control

This area of the application provides global commands that affect all zones simultaneously.



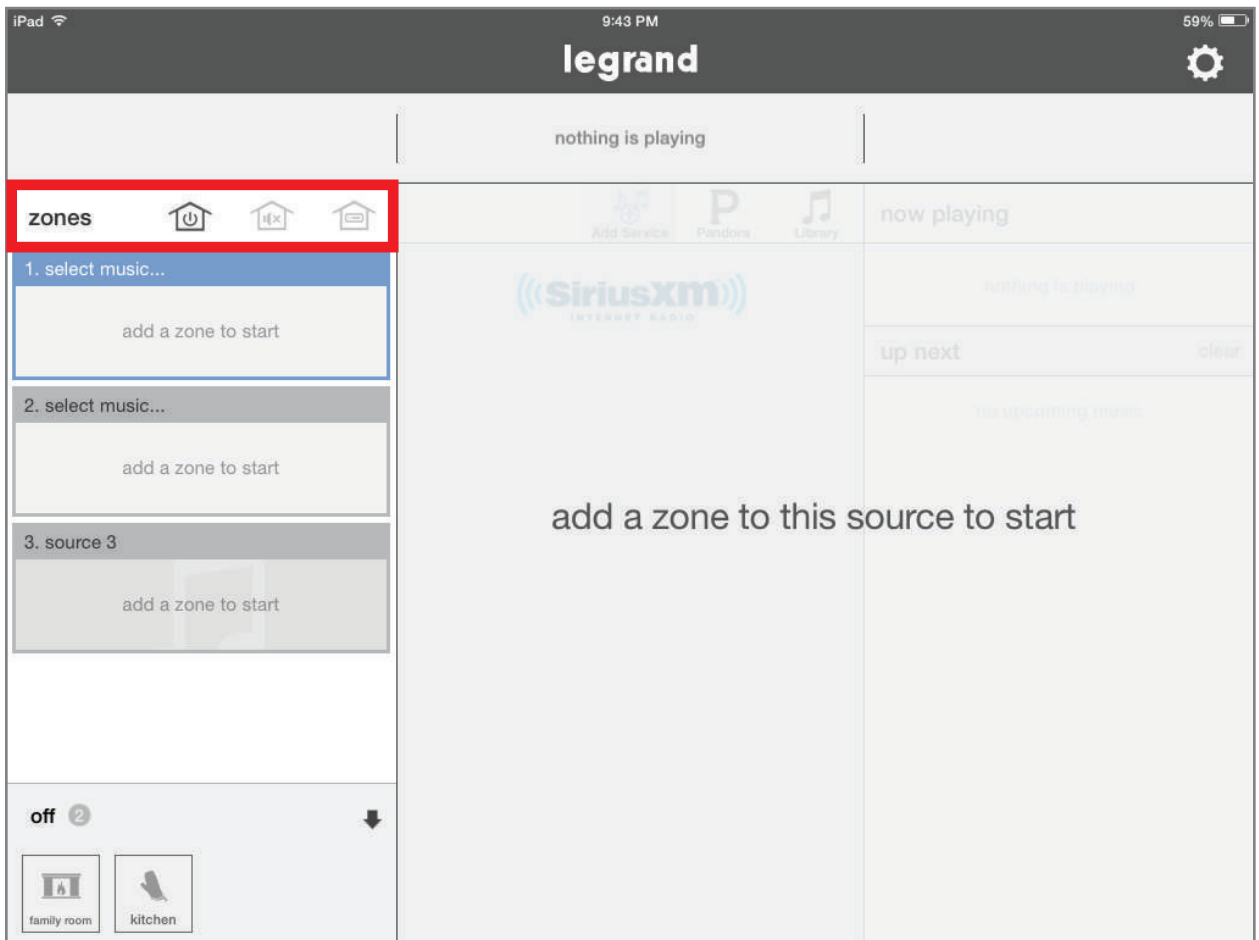
This command turns all zones off.



This command mutes and unmutes all zones.



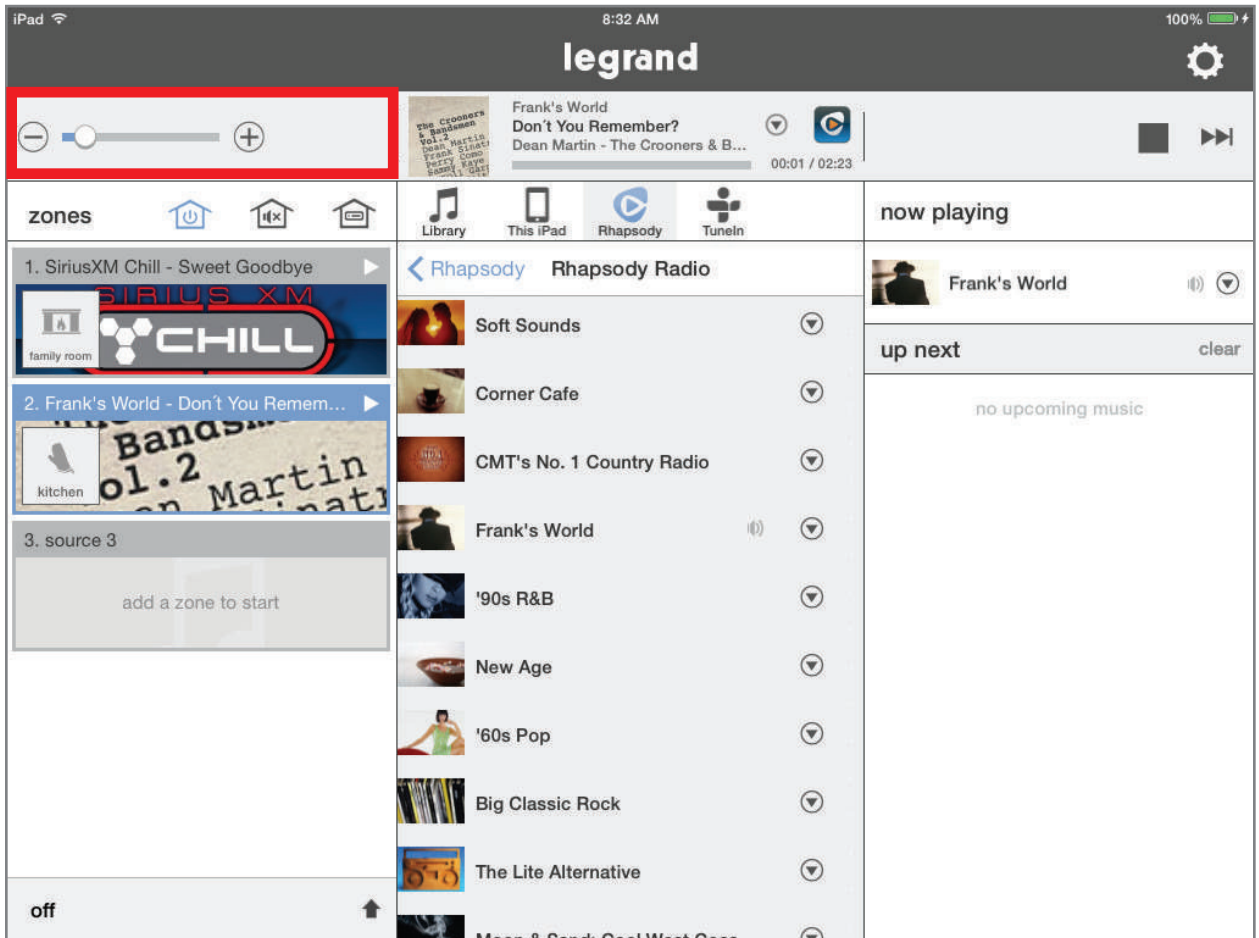
This command selects a single source for all on zones.



Volume Control

Volume can be controlled by sliding the fader, or be adjusted incrementally by tapping the plus (+) or minus (-) buttons.

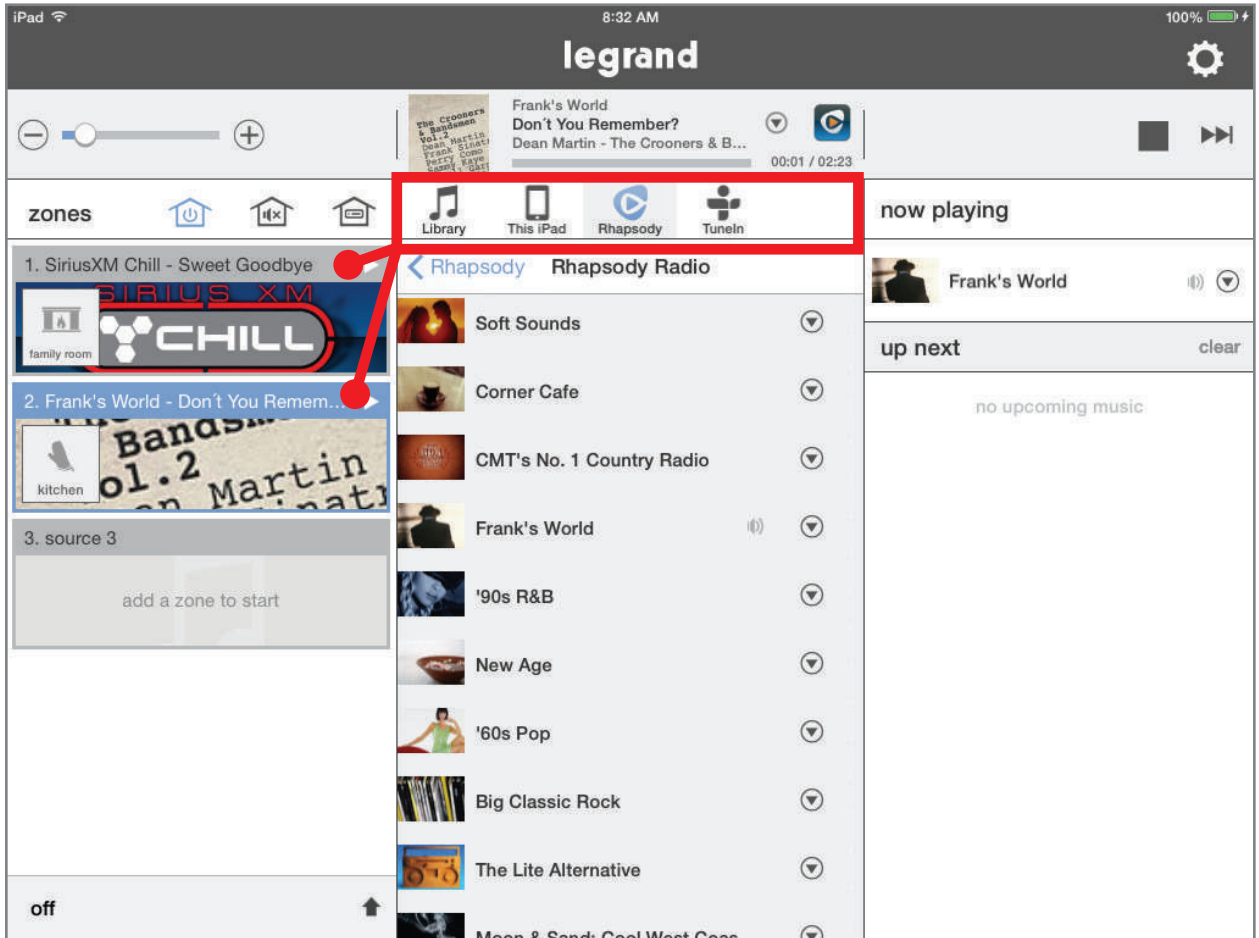
If a single zone is playing, adjusting the volume will affect that single zone. If multiple zones are playing within a group, multiple volume control faders will open to adjust each zone.



Digital Source Selection

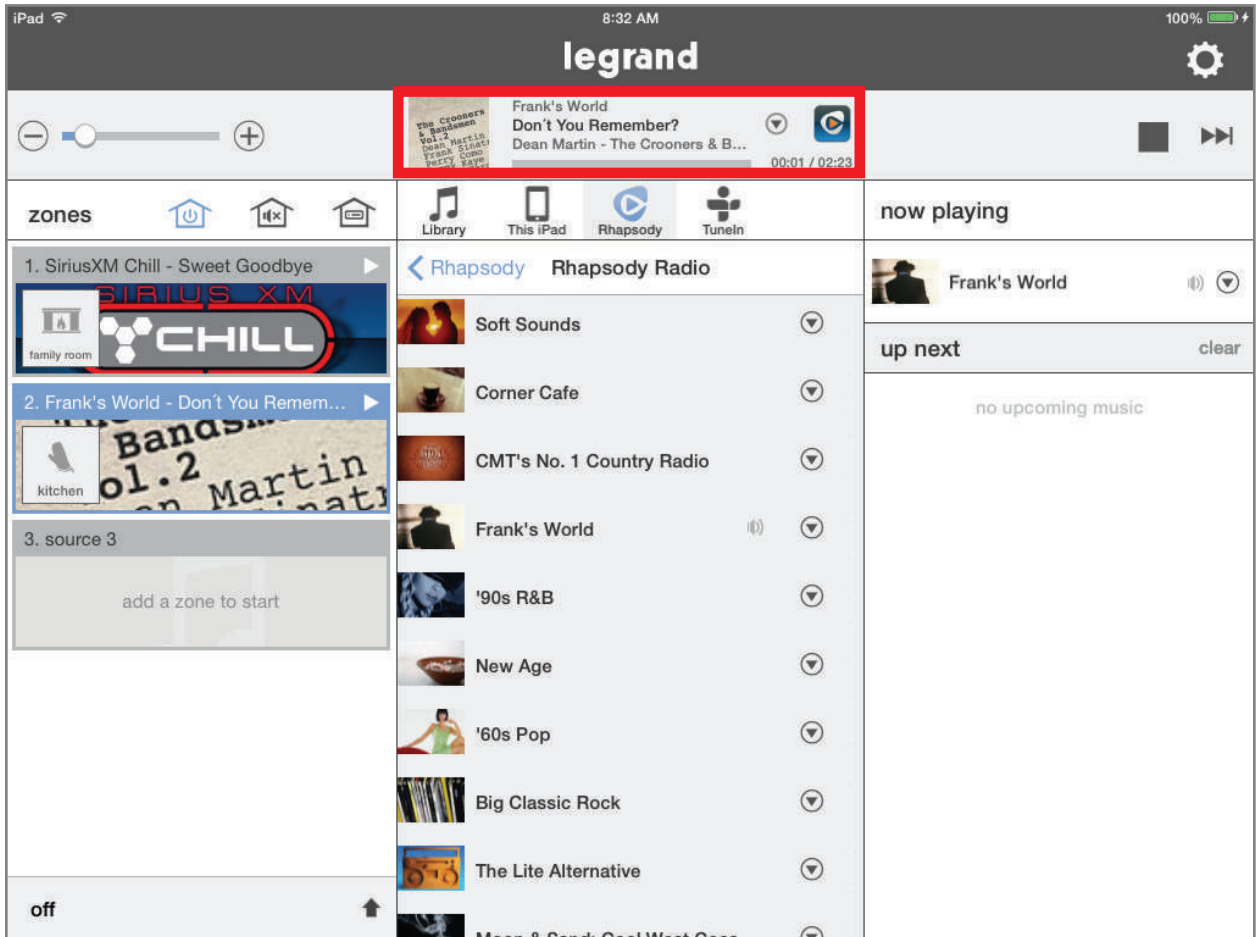
This panel allows users to select their digital audio sources, such as streaming services or digital content stored in a networked music library or even on a mobile device.

(For how to set up streaming services, see “Adding Digital Services” on page 32.)



Currently Playing

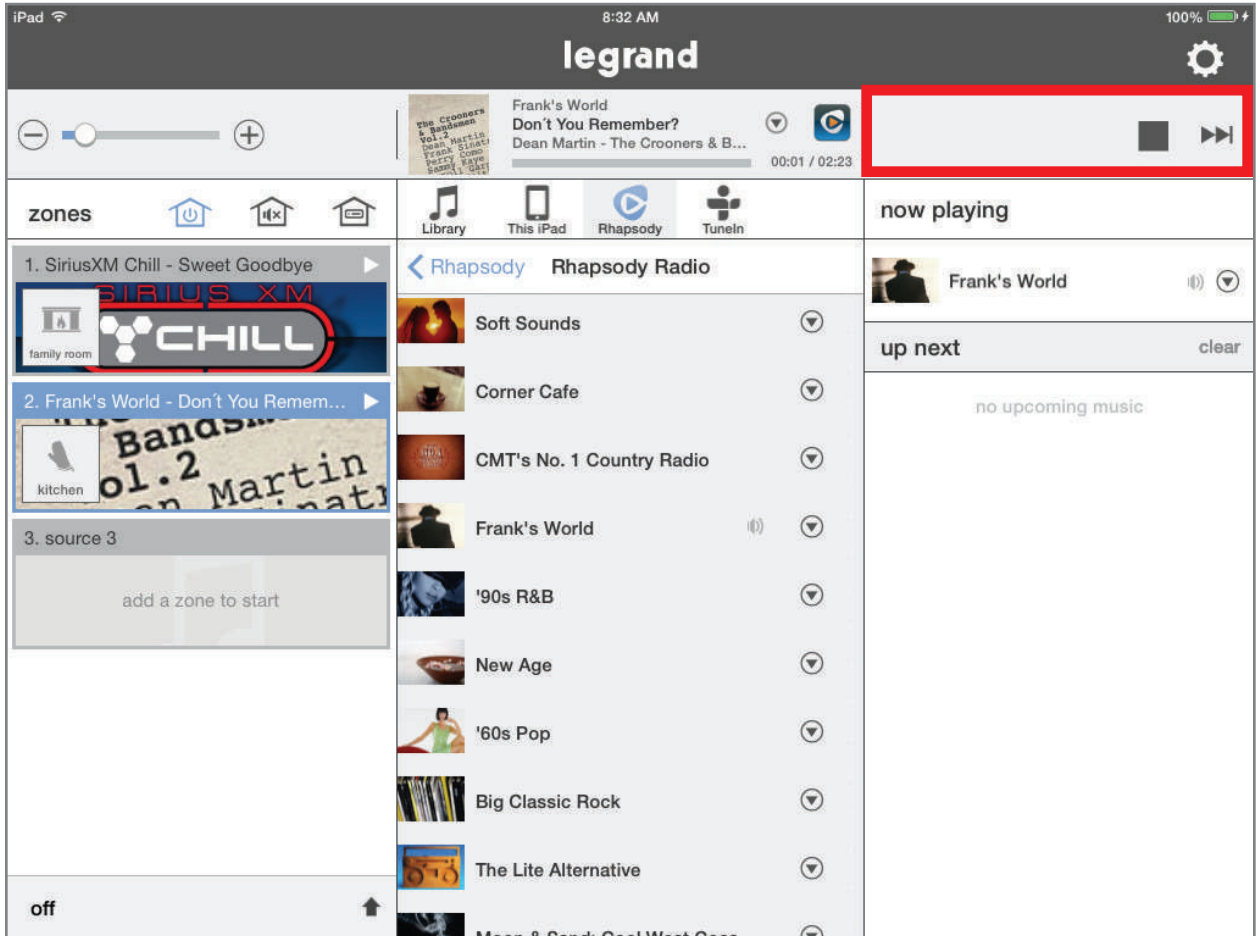
When a source is selected in the sources pane (located on the left), its meta-data is displayed at the top of the app screen.



Transport Controls

Various digital audio services provide transport controls, which display in the top right pane, for added interaction with the audio content (such as the 'thumbs up' and 'thumbs down' functions for Pandora).

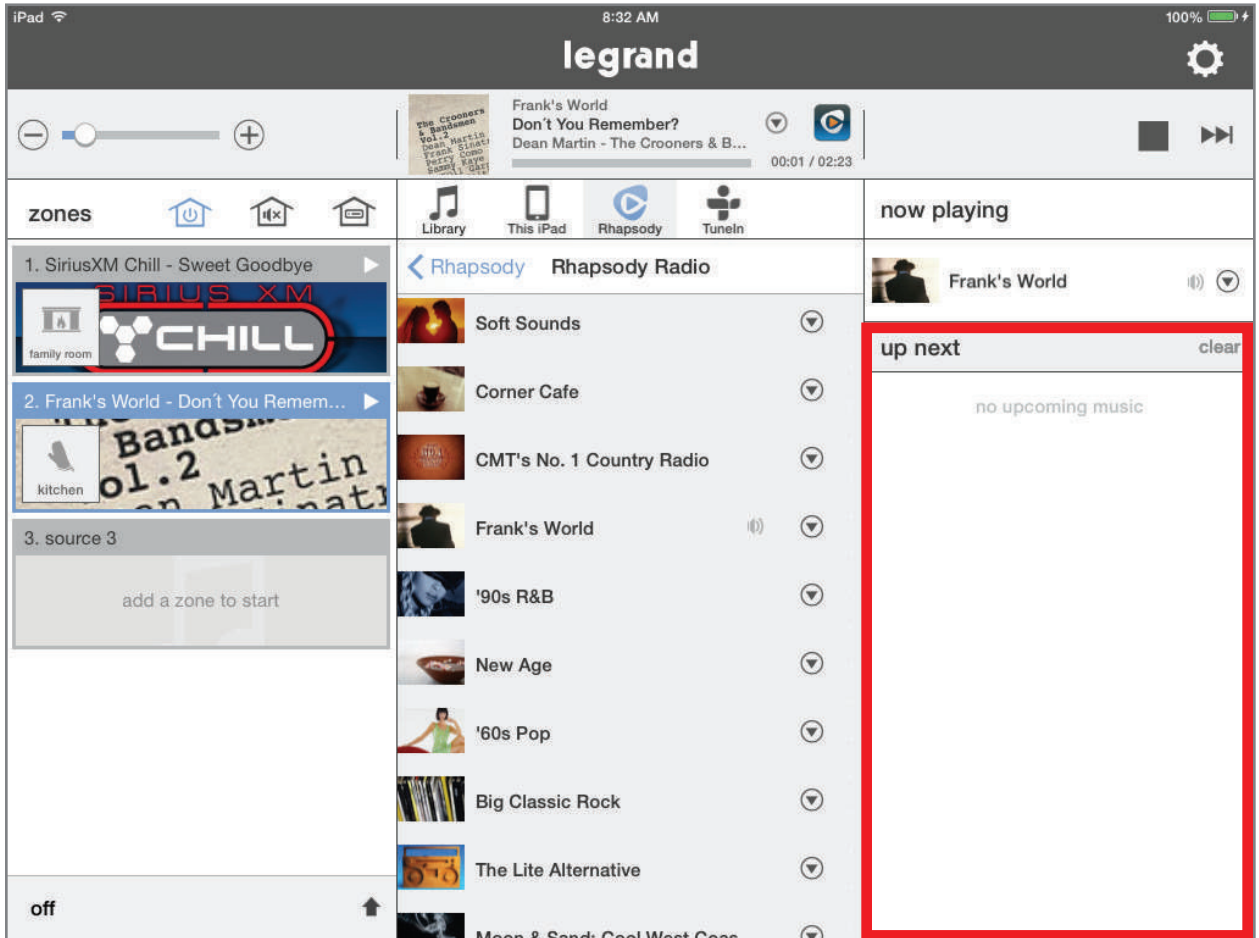
No transport controls will display when an analog source is selected.



Playing Queue

The Playing Queue displays additional content details, such as the next track, for the currently selected source.

The available information in this pane varies by source.

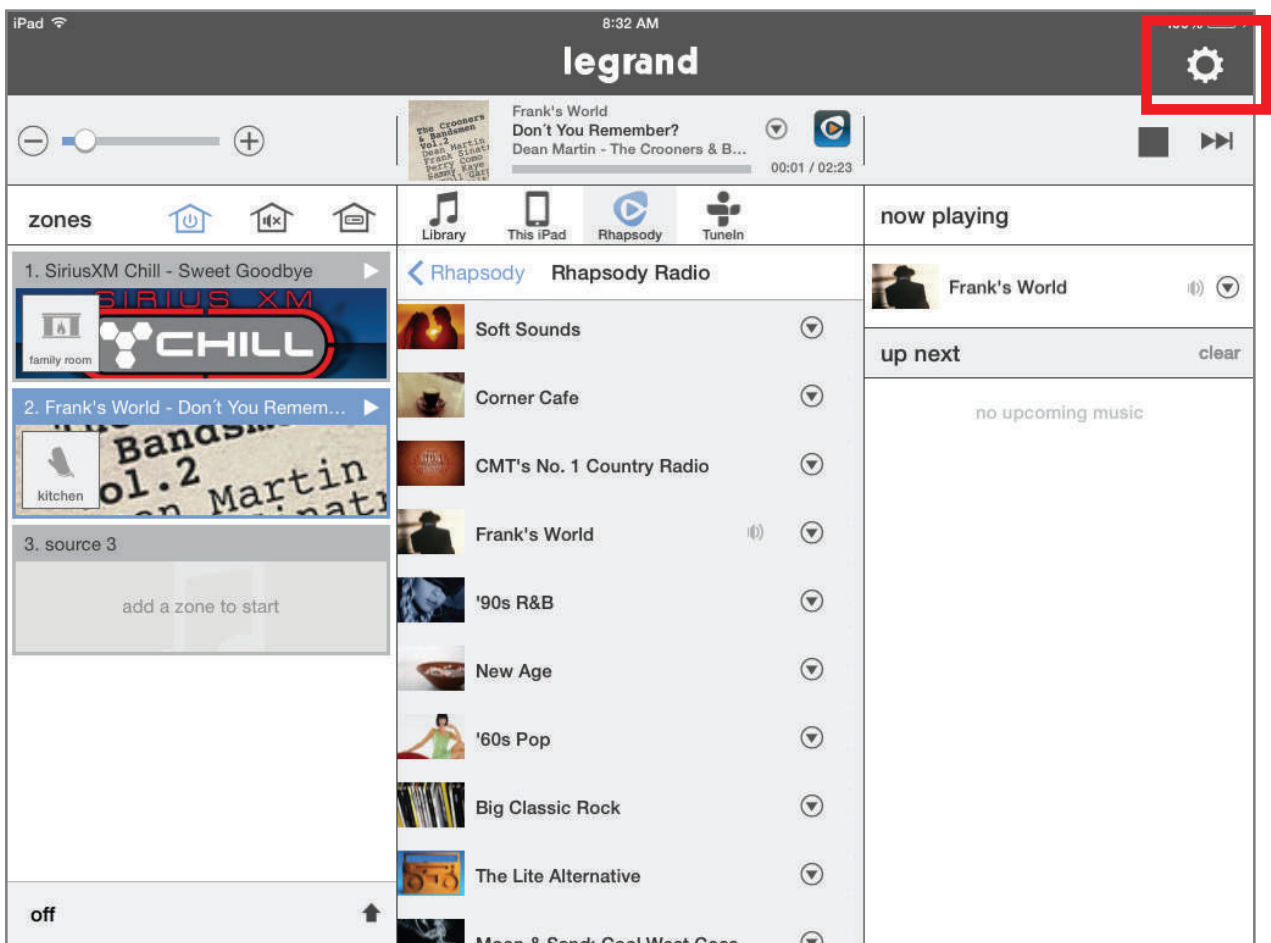


The Control App - Settings

Settings

The Settings section of the Digital Audio app, represented by the gear icon, provides additional control and customization for your system. This is where music services can be added and removed, zone parameters can be adjusted, the status of the system components can be determined, and other features can be accessed.

To enter Settings, tap the **Settings** gear icon.

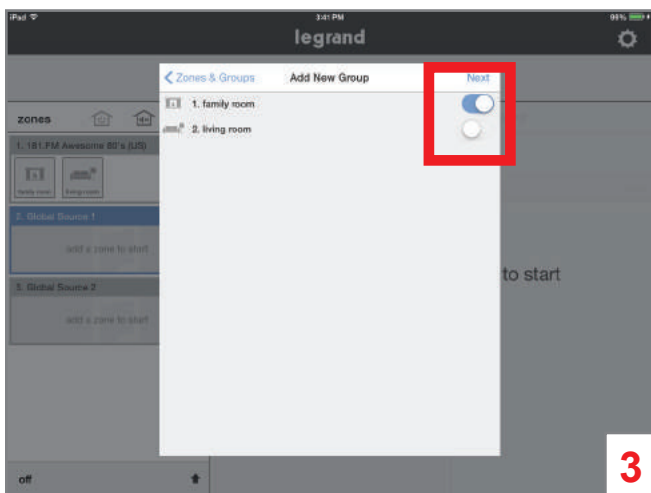
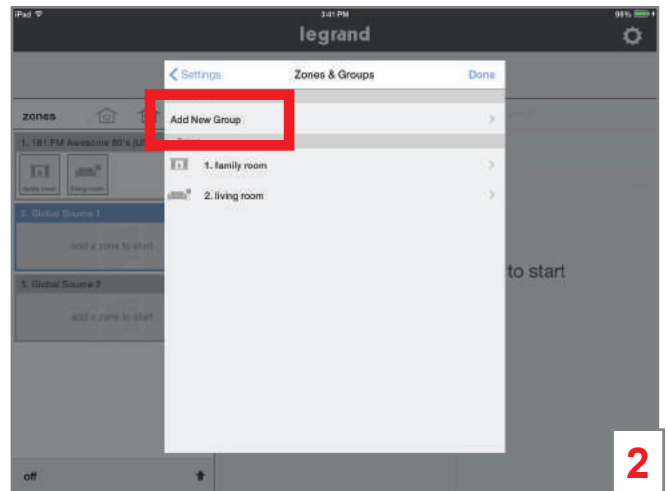
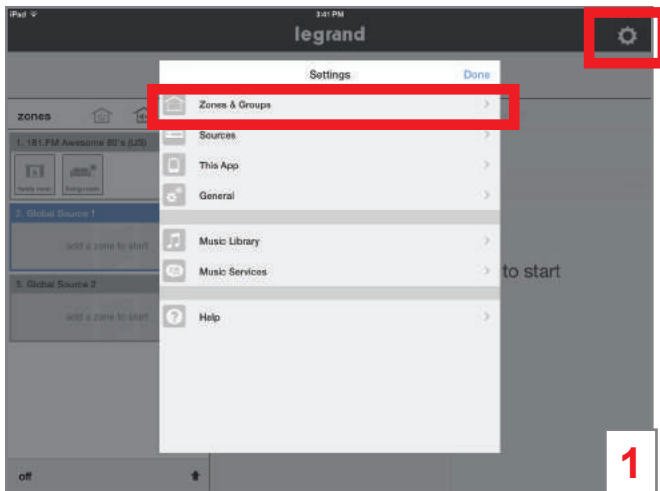


Creating Persistent Groups

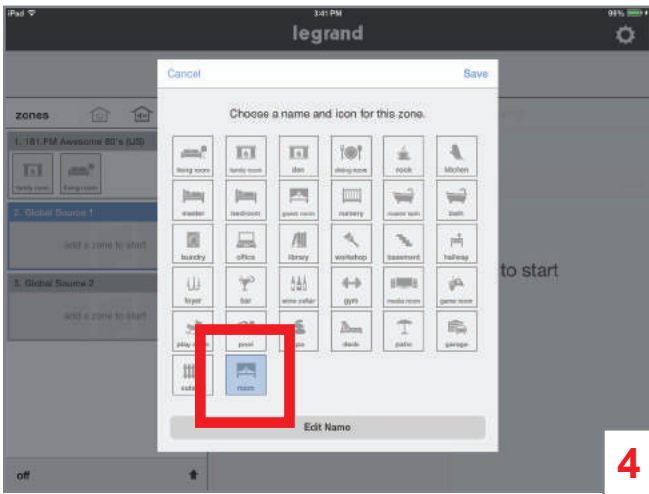
Within Settings, one option for customizing a system is the creation of persistent groups. This allows multiple zones to be joined together more permanently than by simply dragging multiple zones into the same source pane.

To create a persistent group:

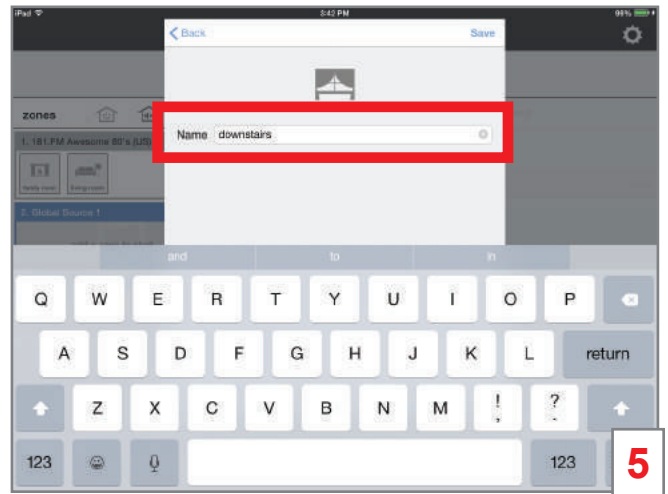
1. Go to **Settings > Zones & Groups**.
2. Select **Add New Group**.
3. From the list of available zones, select the desired zones for addition to your group.



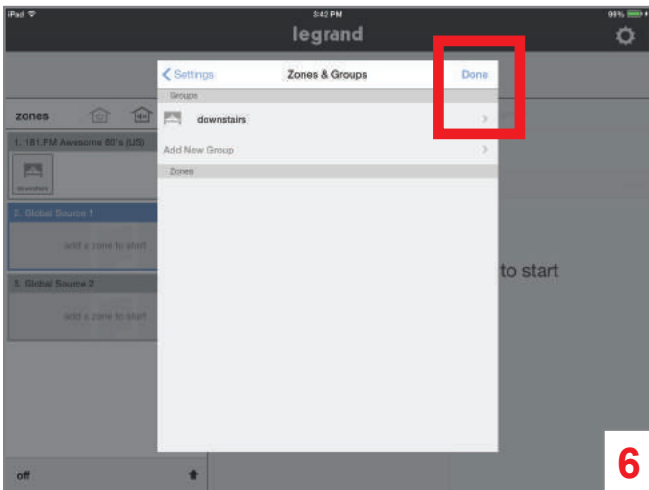
4. Select an icon for the new group.
5. Name the group.
6. Tap **Done**. The newly created group displays on the home page.



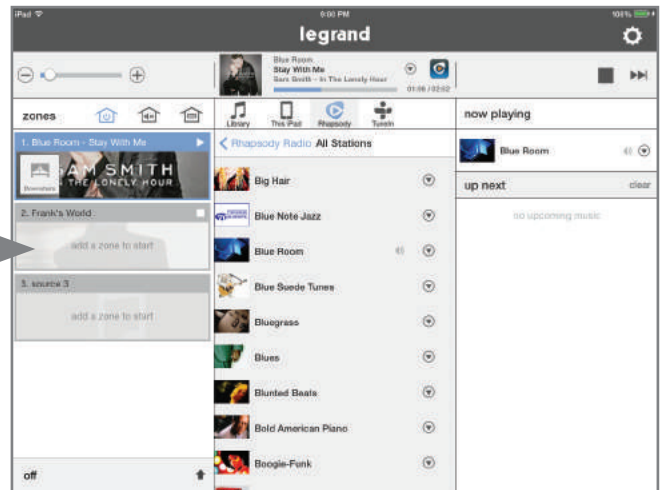
4



5



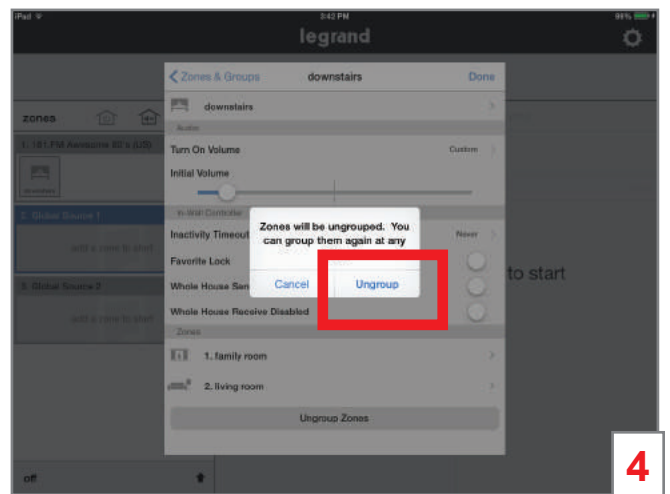
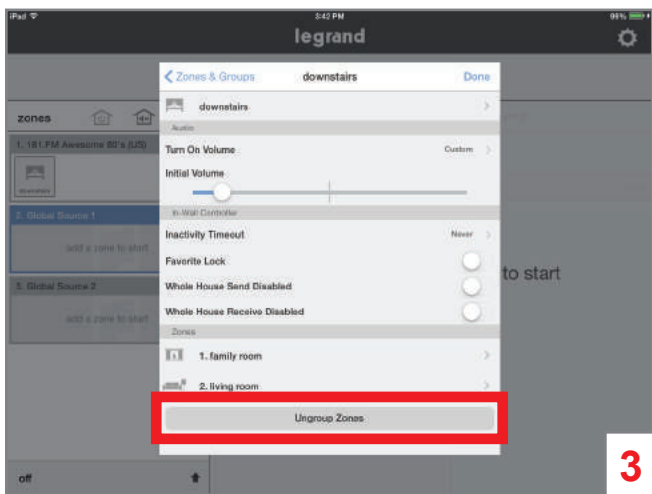
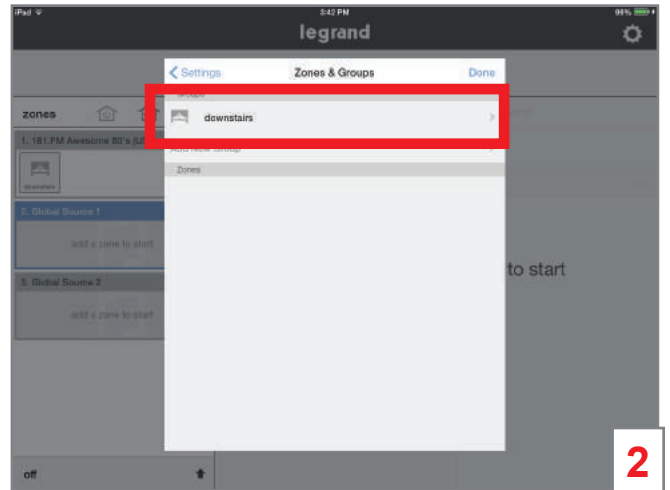
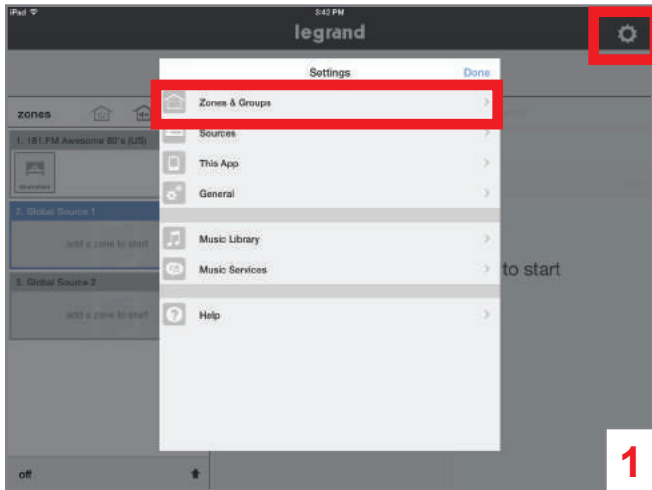
6



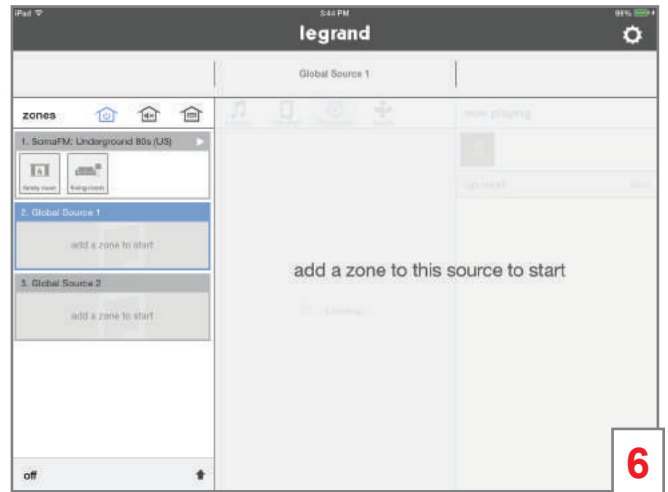
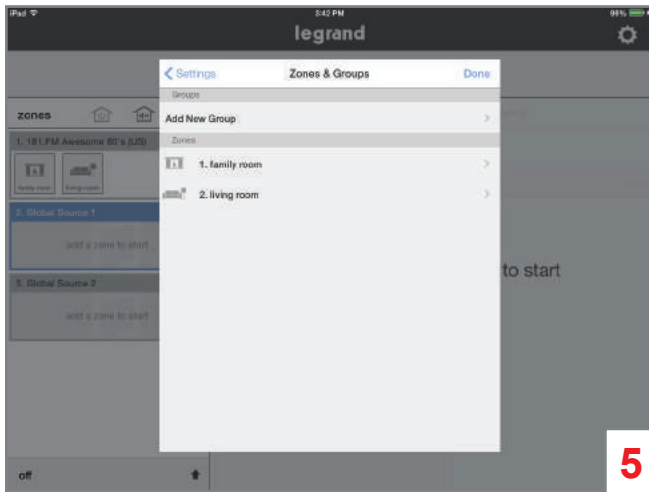
Disbanding Persistent Groups

To disband a persistent group:

1. Go to **Settings > Zones & Groups**.
2. Select the group you wish to disband.
3. Select **Ungroup** zones.
4. Confirm the request.



5. The group disbands and the individual members are now on their own.
6. Go to the **Home Page** to see the individual zones again

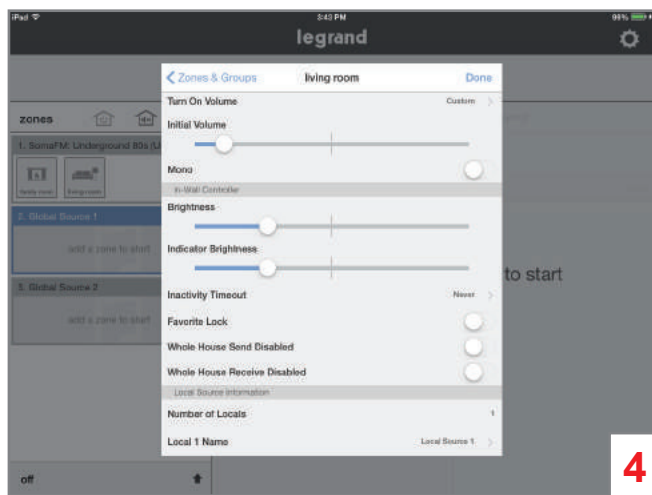
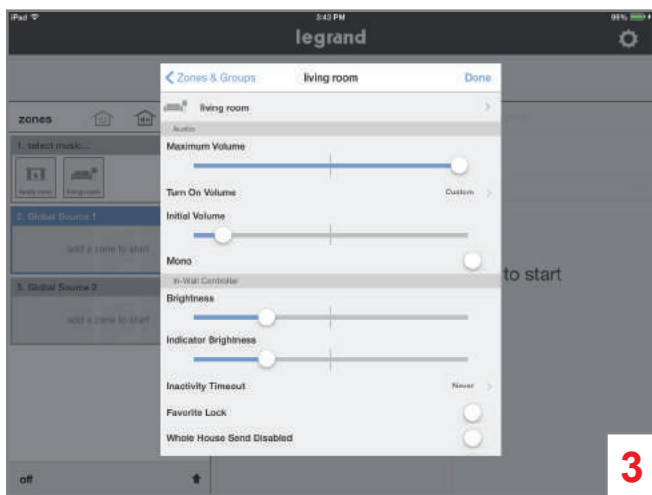
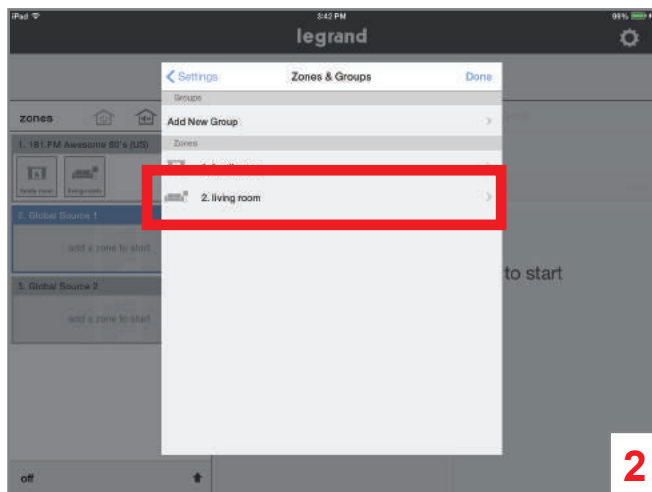
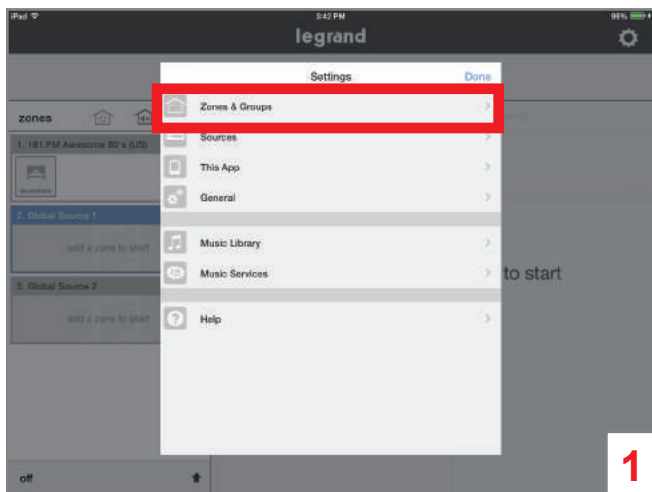


Zones Settings

Zones have many settings that can assist with the user experience.

To enter the zone settings:

1. Go to **Settings > Zones & Groups**.
2. Select a Zone.
3. Adjust your desired setting options (see figures 3 & 4).

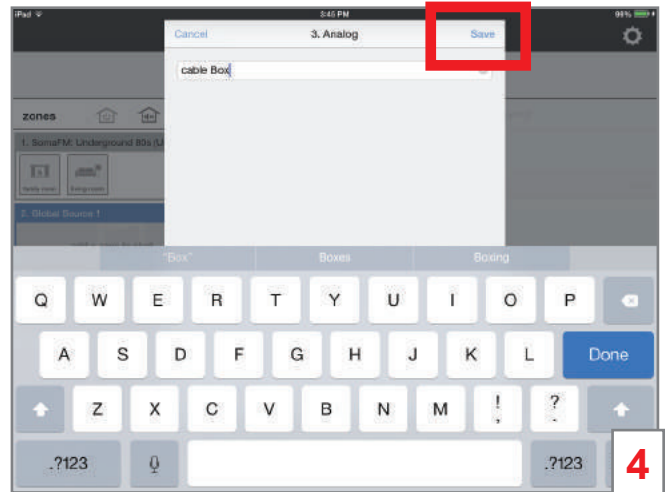
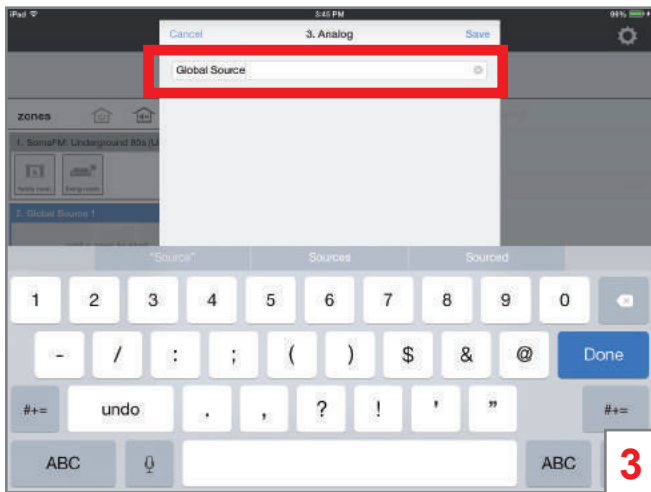
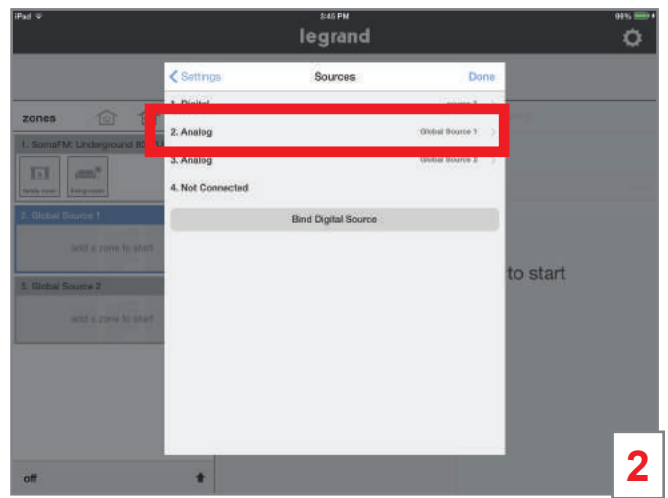
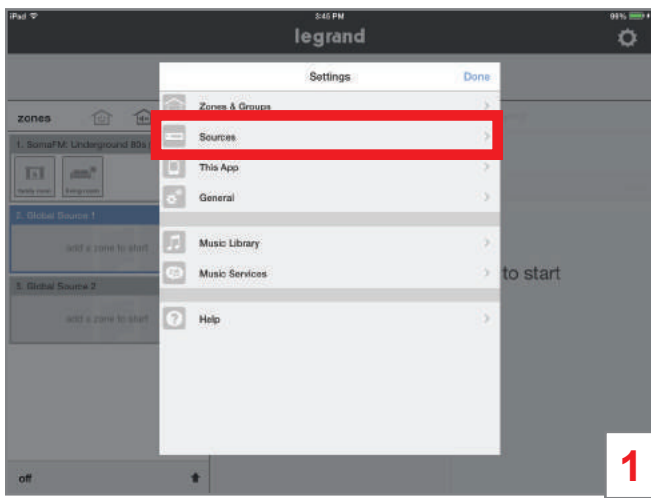


Naming a Digital Audio Global/Local Source

Sources can be named. Generally, it is recommended to only name Global and Local Source Inputs. These inputs will be attached to known devices such as a Cable Box or the Family Room Cable Box. It is possible to name digital sources, but is not recommended.

To name a source:

1. Go to **Settings > Sources**.
2. Select the source you intend to name.
3. Type in the name.
4. Press **Save**.

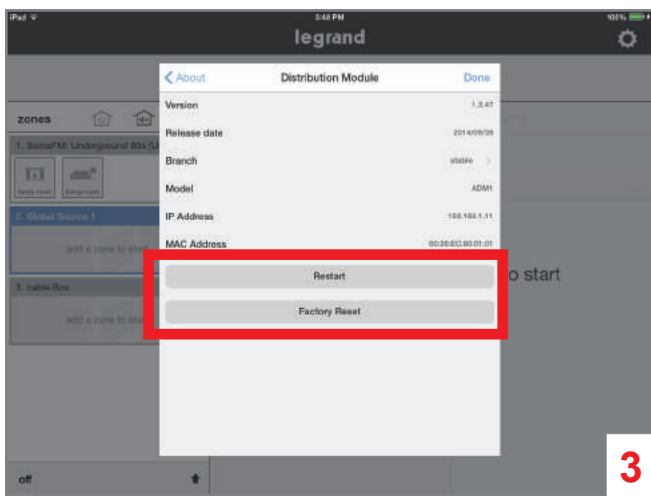
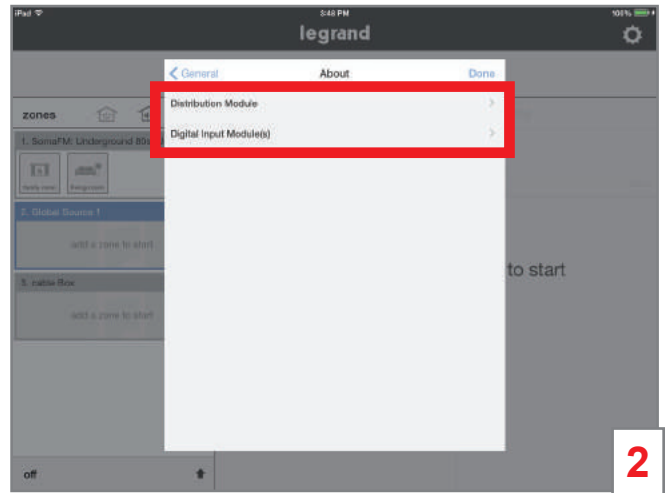
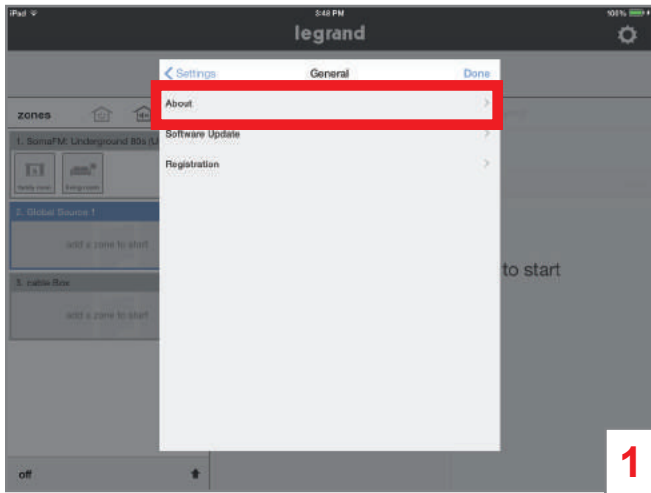


General/About

This portion of the application shows details about the Digital Audio Distribution Module or the Digital Audio Input Module. Details such as the current firmware build and IP address can be accessed. This is also where the Distribution Module can be restarted or factory reset. Be very careful with Factory Reset. If Factory Reset is accidentally enabled, the system will need to be reprogrammed. There is a warning splash screen that appears to confirm you want to reset the system.

To access general/about information:

1. Go to **Settings > General > About**.
2. Select **Distribution Module** or **Digital Input Module**.
3. If required, invoke **Restart** or **Factory Reset** (typically a tech support situation).

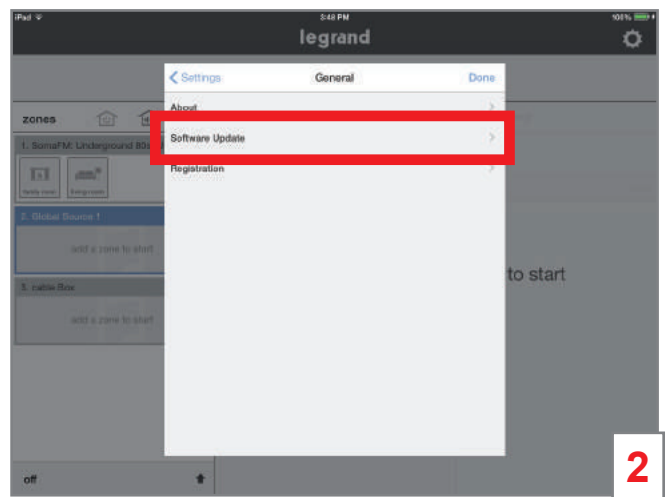
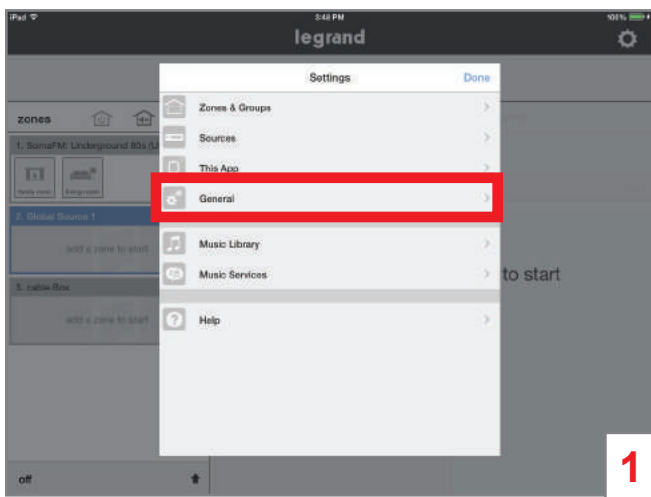


General/About/Software Update

In general, if a software update is available for either the AU7000 Digital Audio Distribution Module or for the AU7001 Digital Audio Input Module you will be prompted with a splash screen alerting you and asking for permission to proceed with the download.

Alternatively, software updates can manually be checked by doing the following:

1. Go to **Settings > General > Software Update**.
2. Select **Distribution Module** or **Digital Input Module**.
3. Information on the status of your software will be presented. The screen typically reads 'Installed' and indicates your software is up to date.

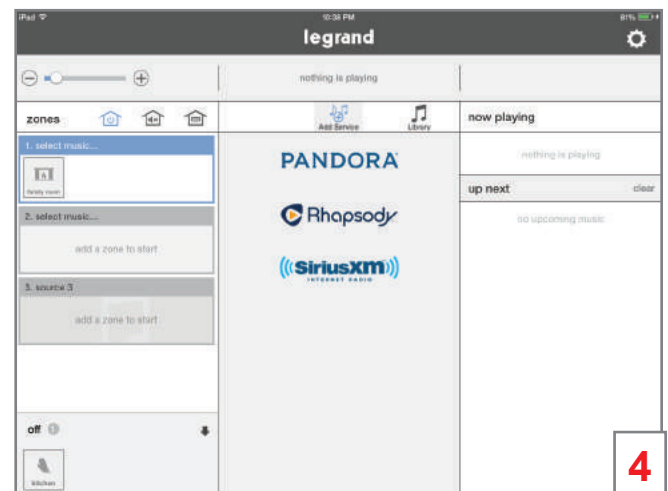
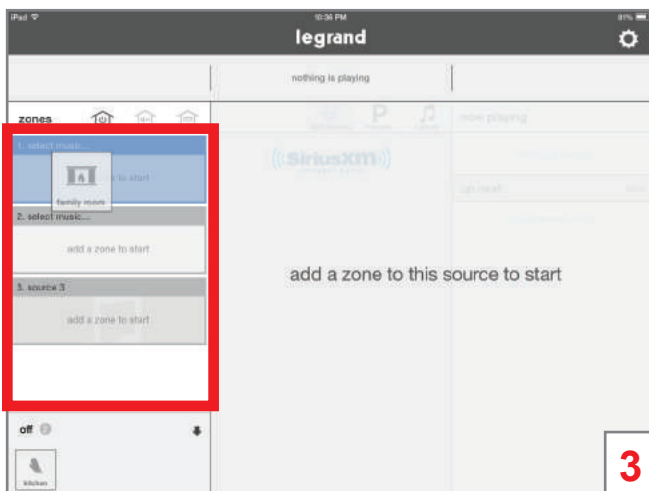
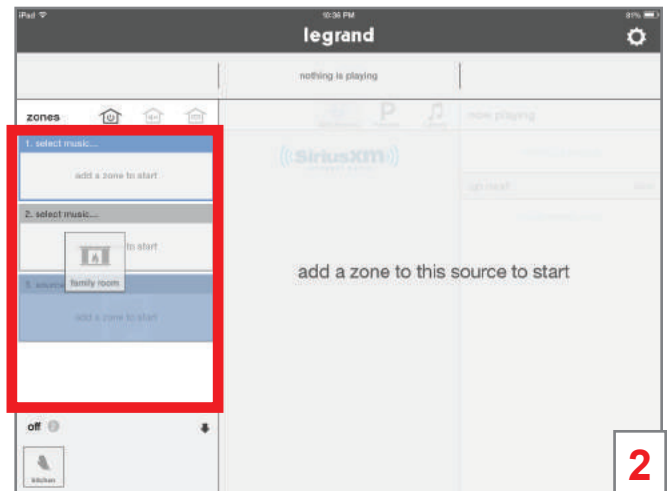
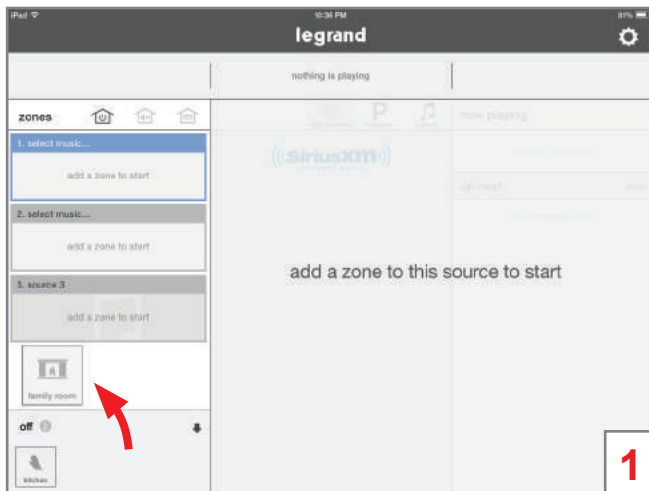


Playing Music with the App

Selecting a Zone (Room) to start Music

To begin playing music, a zone or room must be selected.

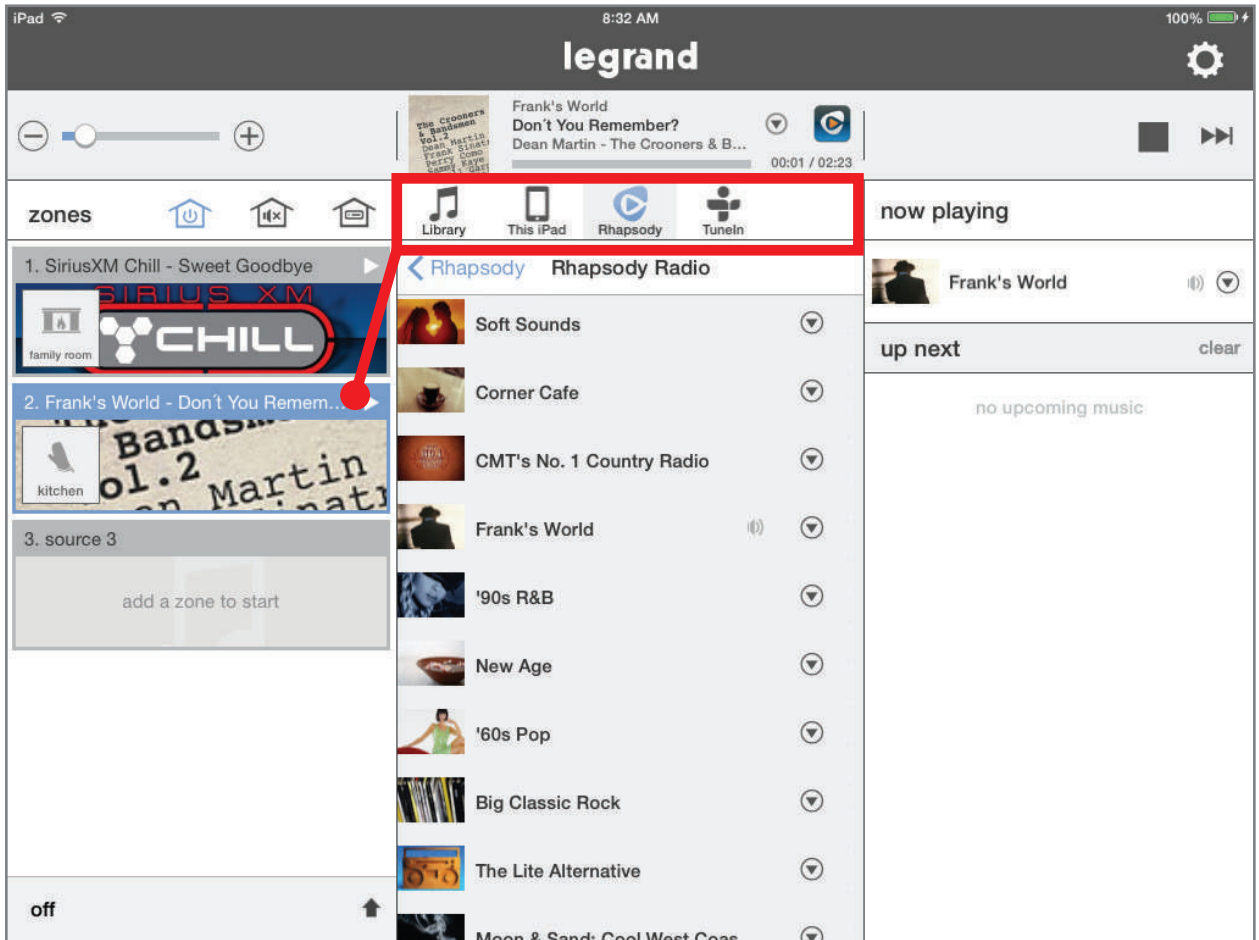
1. Press and hold your finger on a **Zone** icon.
2. Drag the selected icon to the desired source.
3. Once the room icon is hovering above the desired source, release the icon. The icon will move to the desired source. In this example, source one.
4. Go to the **Sources** pane to select content to play in the zone.



Selecting Music for your Zone

To select music, choose the source containing your desired zone, then select the desired service or device from the selection pane in the center panel of the app screen (highlighted in red in the image below). To browse all available services or devices, simply slide your finger left or right.

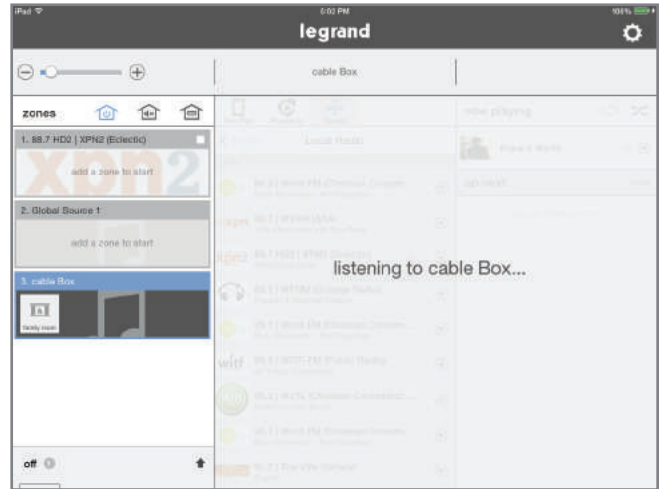
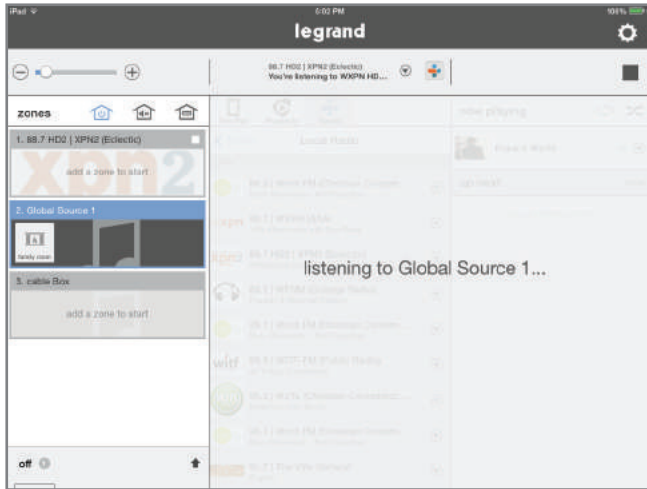
Once you've selected a service or device, the center panel will display the available content for selection.



Selecting a Global Source Input

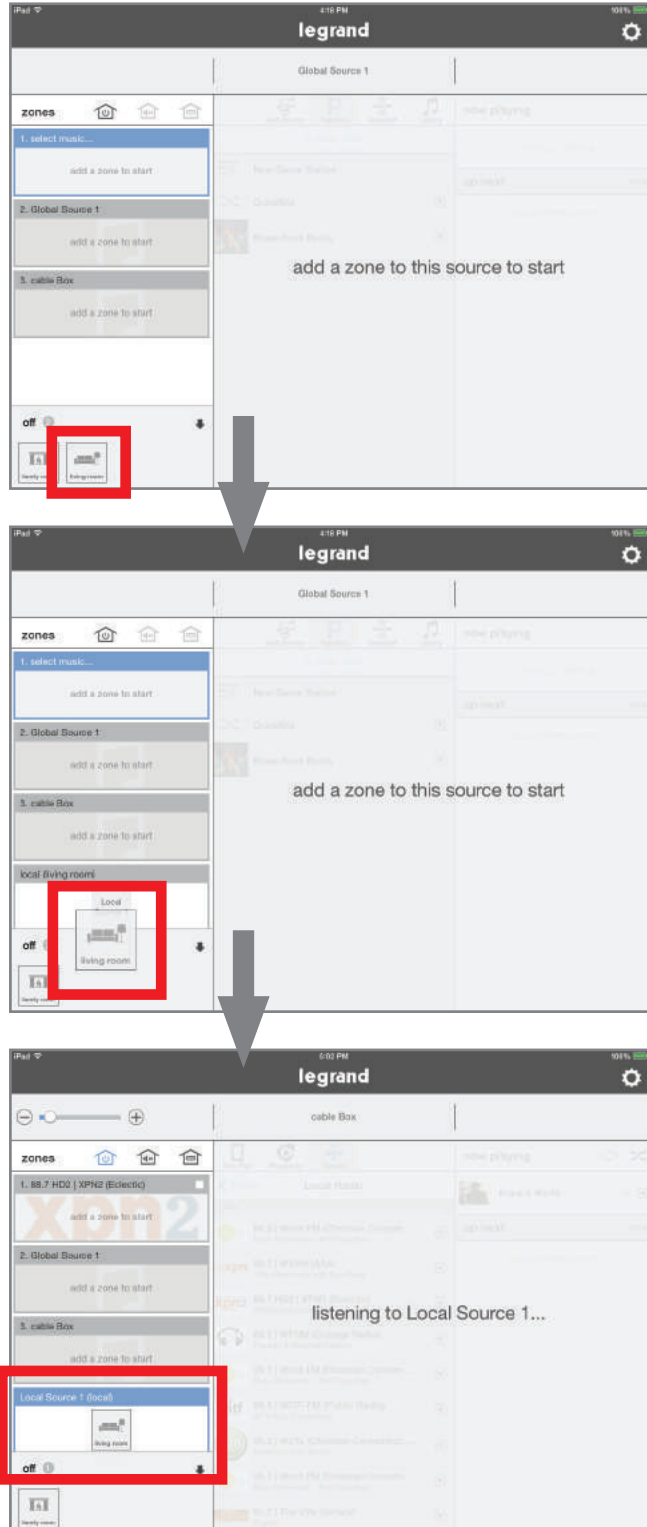
To select the **Digital Audio Global Source Input** (AU7007-XX) as your source, begin by dragging the appropriate **Zone** icon to the **Source Pane** for the AU7007-XX.

Available zones for this example are Global Source 1 and cable Box.



Selecting a Local Source Input

To select the **Digital Audio Local Source Input** (AU7008-XX) as your source, drag the appropriate **Zone** icon to the **Source Pane** for the AU7008-XX. This source will only be available in the zone where it is connected.

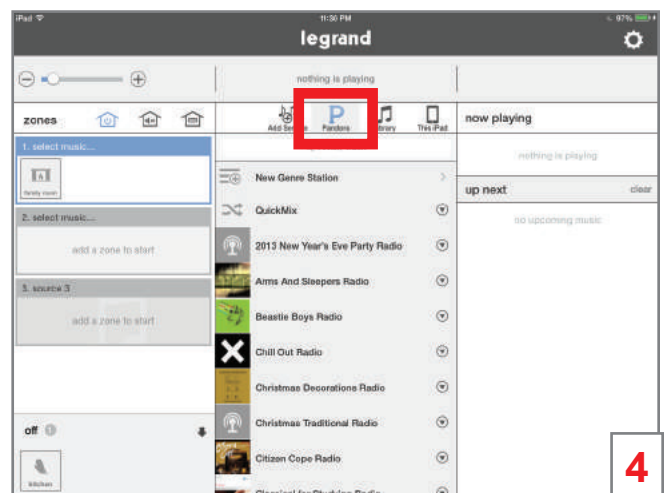
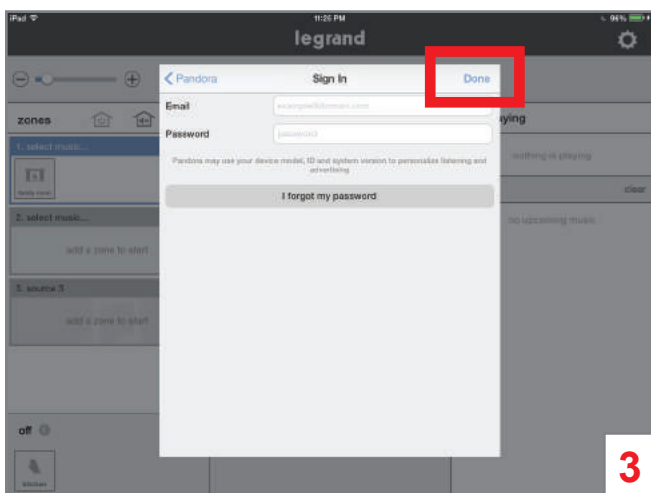
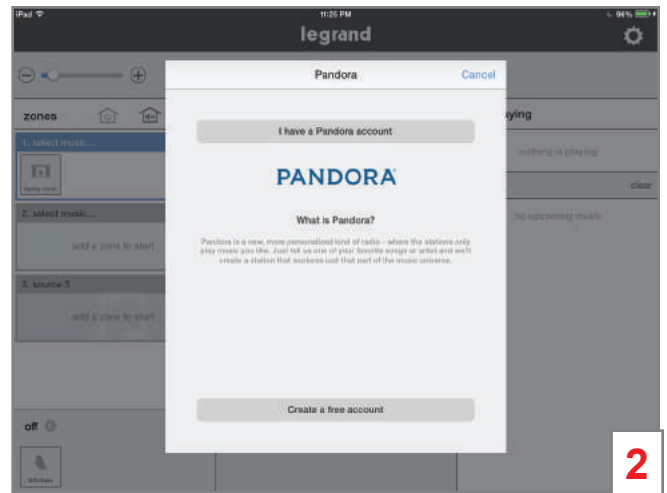
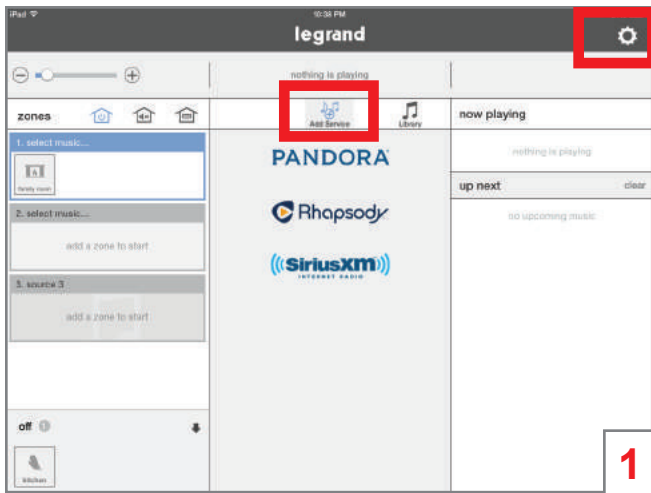


Adding Digital Services

Pandora

To add the Pandora music service to a Digital Audio System:

1. Select **Add a Source** or the **Settings** icon.
2. If you are already a Pandora user, select 'I have an account.' Otherwise, you can set up a free account at this time.
3. Enter the user credentials for your Pandora account. Press **Done**.
4. Return to the **Home Screen**. Your Pandora account is now an available source in your Digital Audio System.

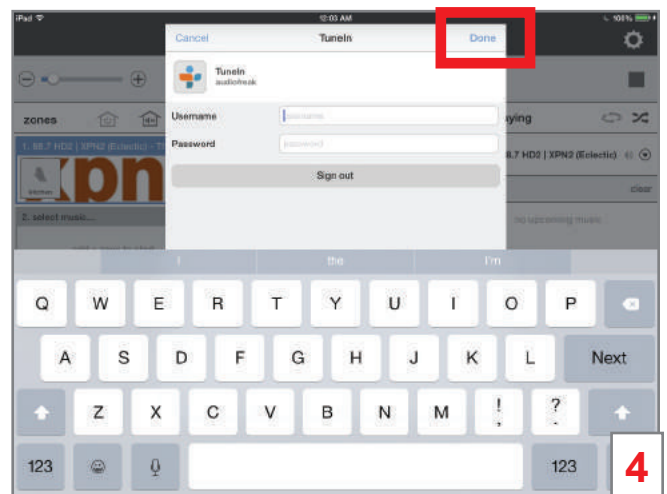
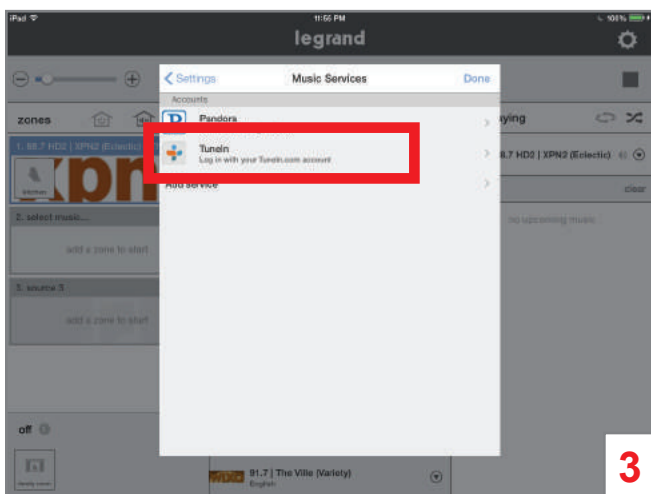
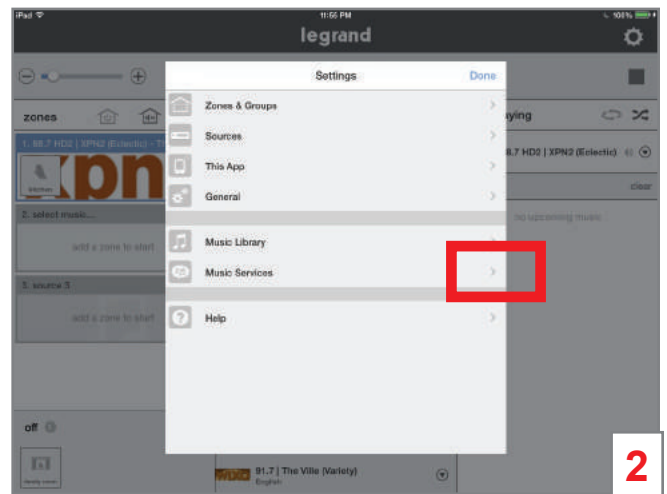
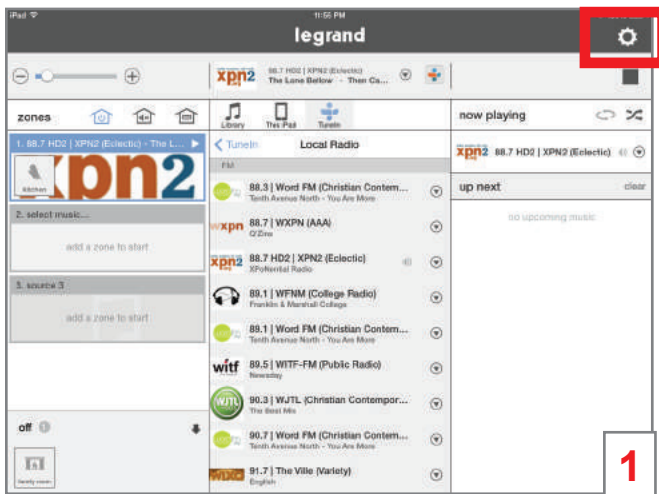


TuneIn

To add the TuneIn music service to a Digital Audio System:

1. Select the **Settings** icon.
2. Choose the **Music Services** option.
3. Select **TuneIn**.
4. If you are already a TuneIn user, enter the user credentials for your TuneIn account. Otherwise, you can set up a free account at this time. Press **Done** and return to the **Home Screen**. Your TuneIn account is now an available source in your Digital Audio System.

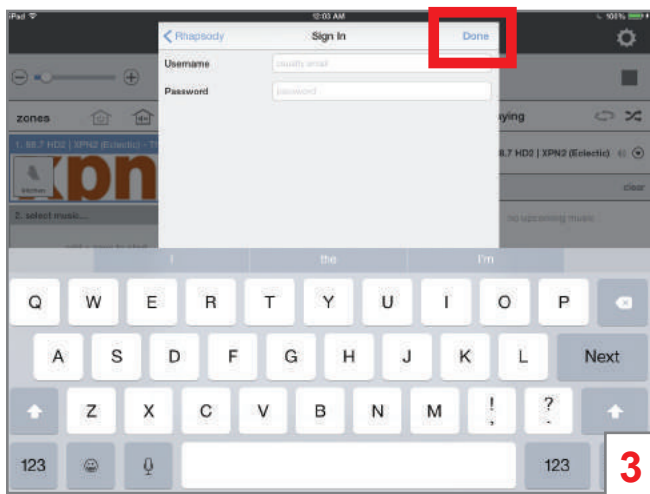
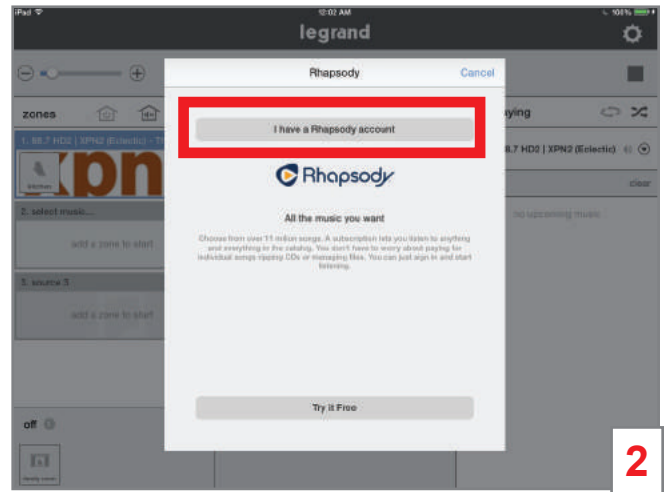
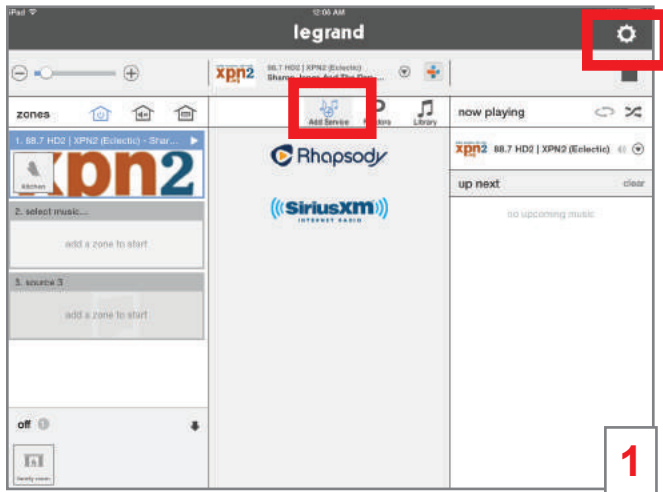
NOTE: TuneIn Radio is a service that works with or without an account. Selecting TuneIn on the Source Selection Wheel will bring up radio choices as well as local choices that are based upon your location.



Rhapsody

Rhapsody is a paid subscription service. To add a Rhapsody subscription account:

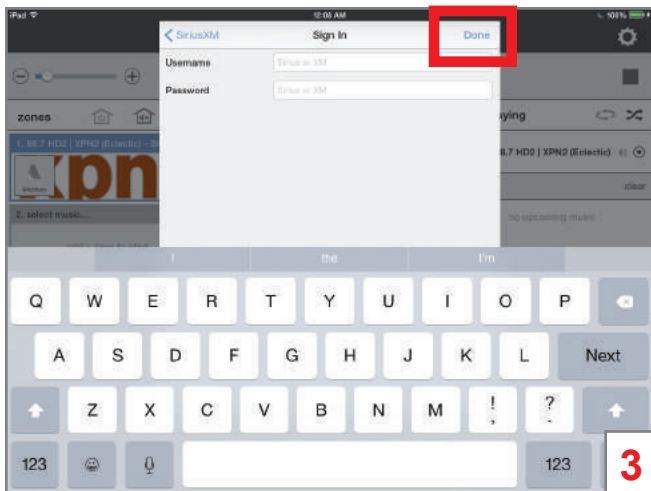
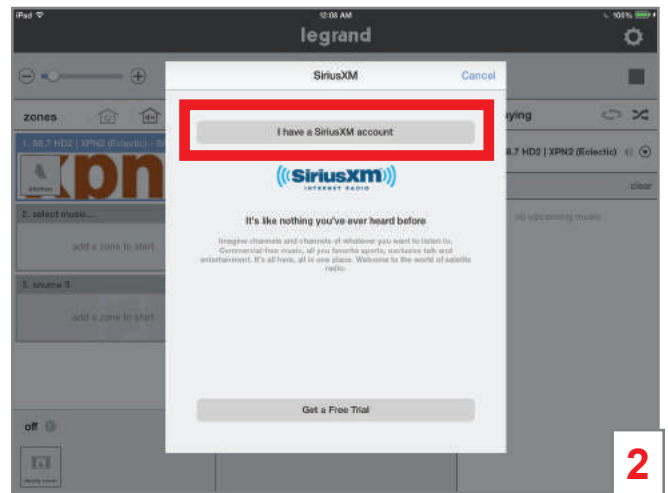
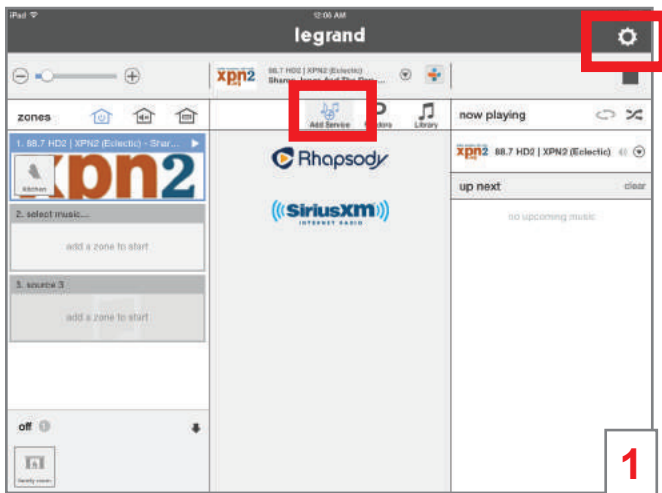
1. Select **Add a Source** or the **Settings** icon.
2. If you are already a Rhapsody user, select 'I have a Rhapsody account.' Otherwise, you can set up a free trial at this time.
3. Enter the user credentials for your Rhapsody account. Press **Done** and return to the **Home Screen**. Your Rhapsody account is now an available source in your Digital Audio System.



SiriusXM

SiriusXM is a paid subscription service. To add the SiriusXM music service to a Digital Audio System:

1. Select **Add a Source** or the **Settings** icon.
2. If you are already a SiriusXM user, select 'I have a SiriusXM account.' Otherwise, you can set up a free trial at this time.
3. Enter the user credentials for your SiriusXM account. Press **Done** and return to the **Home Screen**. Your SiriusXM account is now an available source in your Digital Audio System.

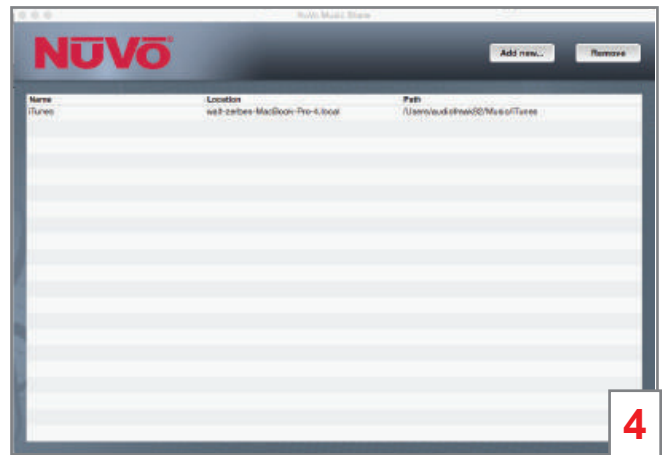
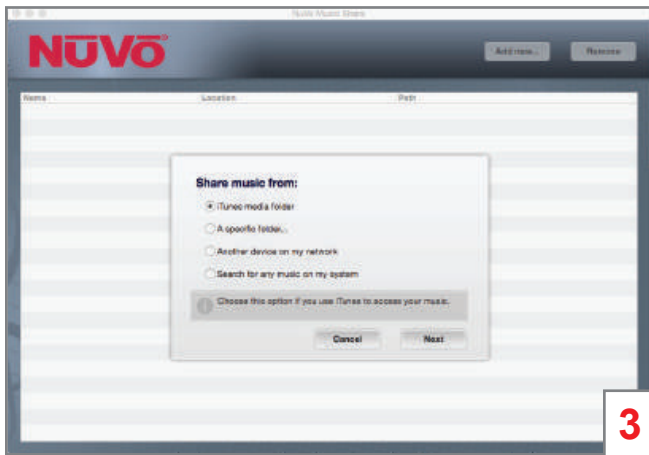
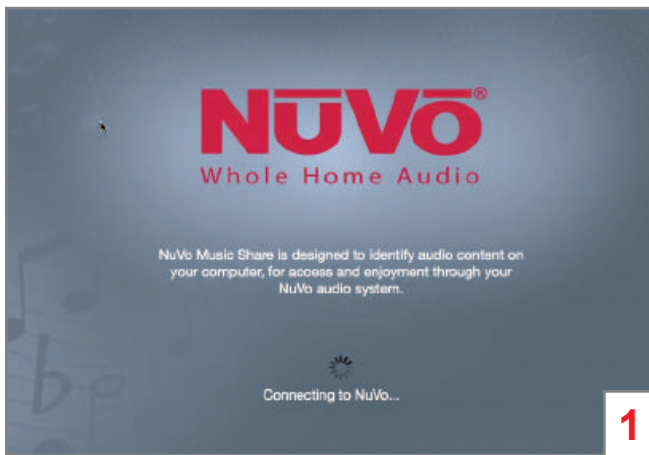


Music Libraries

In addition to providing access to digital streaming music services, the Legrand Digital Audio System can access digital files located on the home's network. Files stored on NAS drives or one or more iTunes, Windows Media or music folders can be accessed. There are multiple ways to gain access to these folders. The easiest solution is to download and use the **NUVO Music Share** program available for both PC and Mac, from the Legrand.us website.

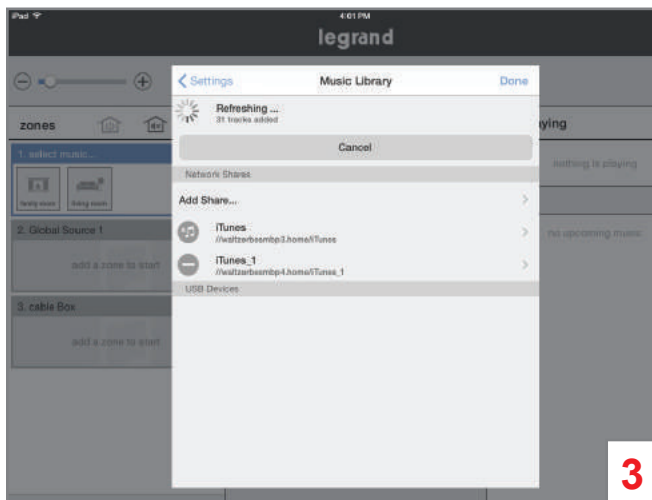
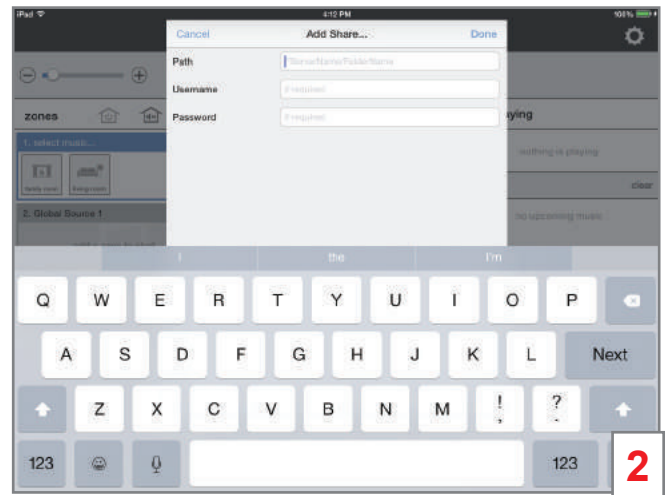
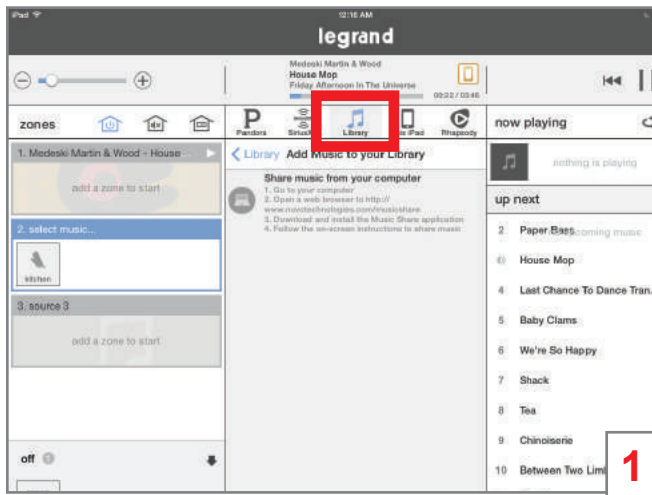
Downloading the Music Share program

Download and install the Music Share program, run the program, and follow the instructions. An example for adding iTunes to the Digital Audio System is shown.



Entering the pathway

Another method for adding music libraries to your Digital Audio System is to enter the path for the folder you wish to access, as shown.

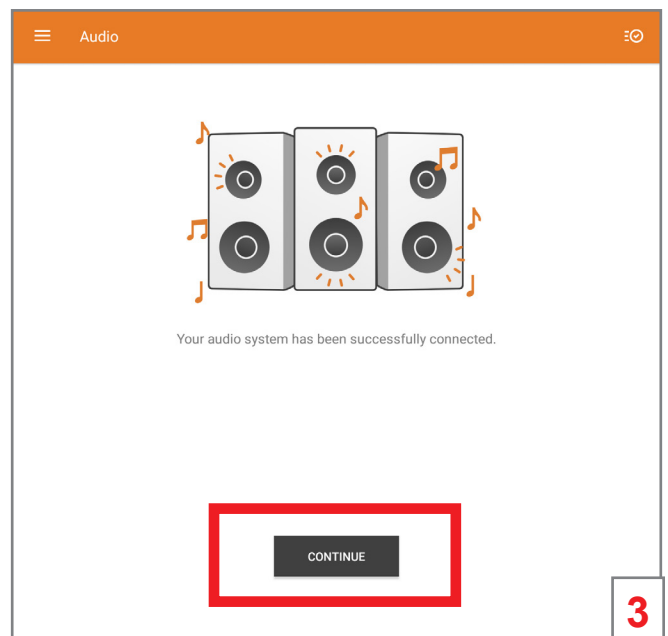
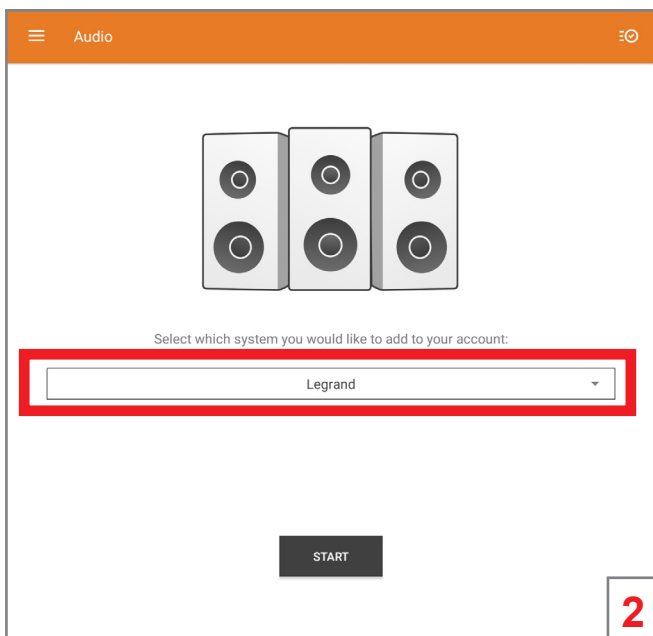
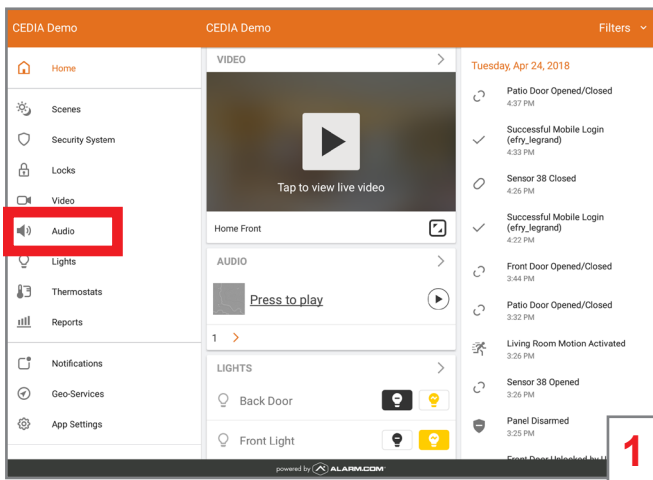


Integrating with Alarm.com

Integrate your Legrand Digital Audio System with the Alarm.com app for access to your digital audio system from your home protection app.

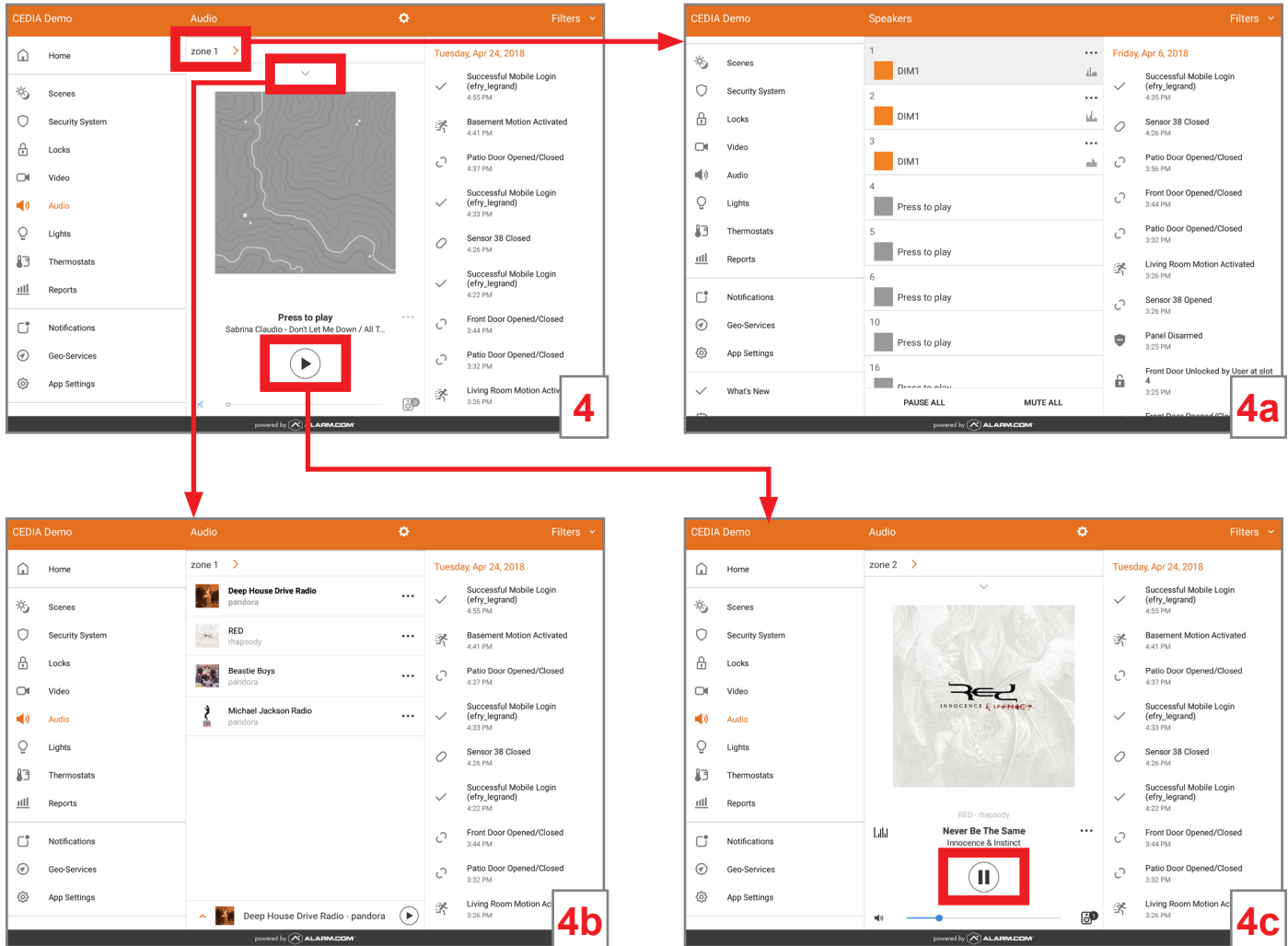
Visit www.legrand.us/onq/digital-audio to learn more.

1. Log into your Alarm.com account. Select **Audio** from the left pane navigation menu to start the connection.
2. Your system searches for available audio systems.
 - Choose **Legrand**.
 - Select **Start** to load the speakers (zones) tied to your Legrand Digital Audio System.
3. Your connection was successful! Select **Continue** to start playing music.












4. The default audio screen appears. To start playing music:
 - a. Choose the zone identifier to reveal your list of zones. Then, select zone(s).
 - b. Pull the current zone window down to show the sources available for your music, then select the source you want to play for the zone.
 - c. Select the **play** button. The source menu appears.

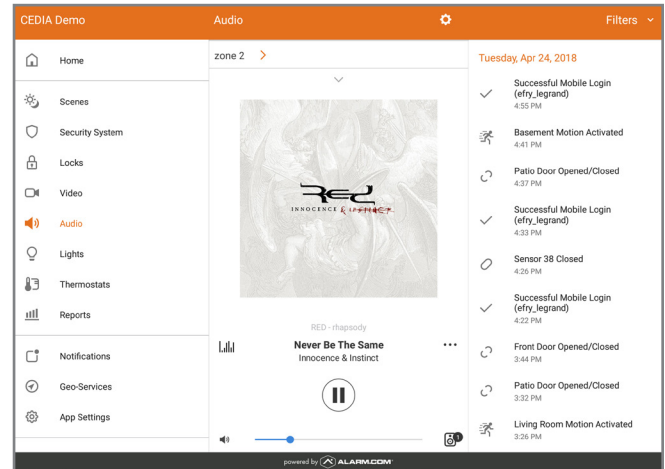
NOTE: Zone 1 is the default zone. There are eight zones available on your system.



Navigating the Source Menu

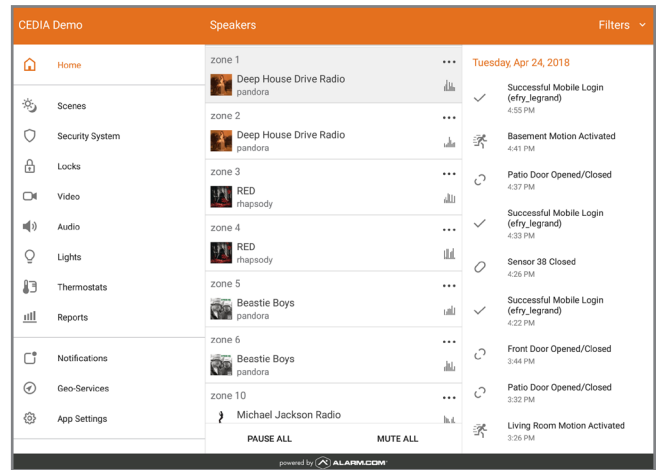
The source menu appears, and the music begins playing in the selected zone(s).

Icon	Description
	Plays the source
	Pauses the source
	Shows the activity state of a zone
	<ul style="list-style-type: none"> Slide the blue bar to raise or lower the volume Tap to reveal the volume menu for all zones
	Press to mute the selected zone(s)
	Press to unmute the selected zone(s)
	Displays additional source options: <ul style="list-style-type: none"> Play now Play on all zones Play on multiple zones Open Legrand App Cancel
	Drops the screen to display options
	<ul style="list-style-type: none"> Displays the number of zones playing the selected source Press to display list of zones and volume settings




Selecting Zones

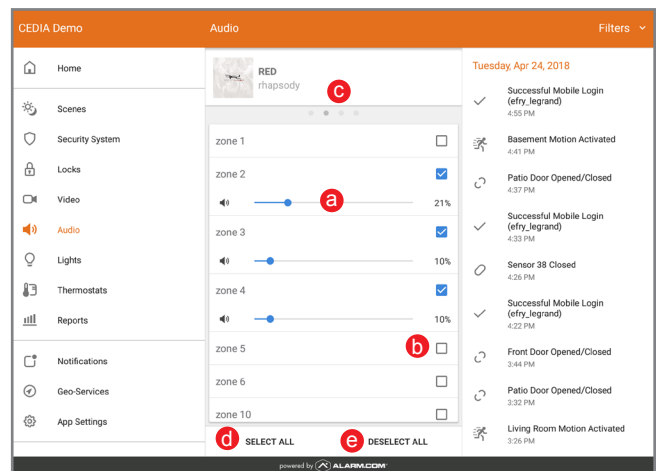
Select the zone identification on the source menu to return to the full list of zones. From this screen, discover the active zones and the source each zone is playing.




Zone Setting

Choose  to open the zone settings menu. From here you have the option to:

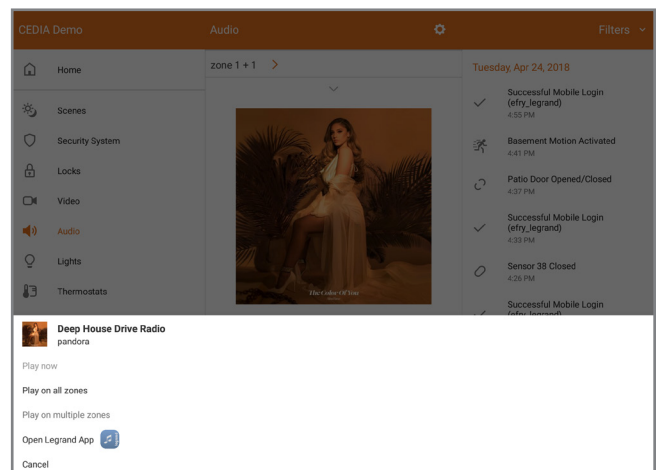
- Change the volume of any zone
- Select additional zones to play a source by checking the box next to the zone
- Rotate through your source options to choose different sources for your zones
- Select all zones to play one source
- Deselect all zones from playing a source



The Source Page

Select  on the source menu to go to the source page. From here you have the option to:

- Play now – play the source on the selected zone
- Play on all zones – play the source on all of your zones
- Play on multiple zones – play the source on selected zones
- Open Legrand App – go to your Legrand Digital Audio app
- Cancel – go back to the source menu





For technical assistance on your Lighting Control app, contact On-Q Technical Support between 8 AM and 6:30 PM EST.

Phone: 717-546-5412

Email: technical.support-hs@legrand.us

Chat: www.legrand.us/on-q
(Click on the  icon to open a dialogue box)