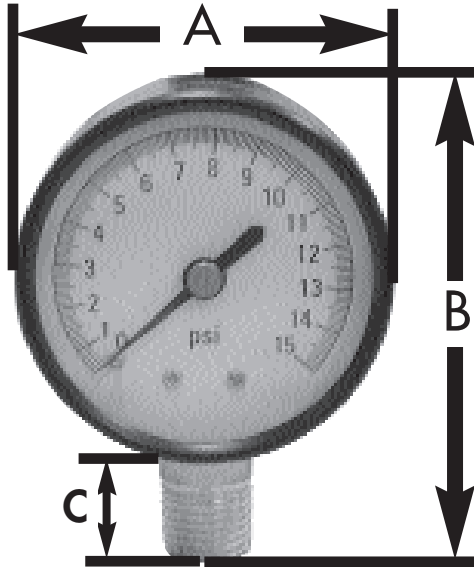


# SPECIFICATION SUBMITTAL SHEET

jones stephens corporation

## PRESSURE GAUGE



### features and benefits:

- 1/4" MIP brass lower connection
- Applicable with air, water, oil and gas (anything which does not attack brass)
- Not for use on oxygen service
- Class 2.5-2% accuracy
- Individually boxed
- Shatterproof face
- Steel case

| PART NO.                         | DESCRIPTION | A      | B      | C  |
|----------------------------------|-------------|--------|--------|----|
| <b>2" FACE</b>                   |             |        |        |    |
| <input type="checkbox"/> G60-015 | 15 PSI      | 2"     | 3"     | 1" |
| <input type="checkbox"/> G60-030 | 30 PSI      | 2"     | 3"     | 1" |
| <input type="checkbox"/> G60-060 | 60 PSI      | 2"     | 3"     | 1" |
| <input type="checkbox"/> G60-100 | 100 PSI     | 2"     | 3"     | 1" |
| <input type="checkbox"/> G60-160 | 160 PSI     | 2"     | 3"     | 1" |
| <input type="checkbox"/> G60-200 | 200 PSI     | 2"     | 3"     | 1" |
| <input type="checkbox"/> G60-300 | 300 PSI     | 2"     | 3"     | 1" |
| <b>2 1/2" FACE</b>               |             |        |        |    |
| <input type="checkbox"/> G61-015 | 15 PSI      | 2 1/2" | 3 1/4" | 1" |
| <input type="checkbox"/> G61-030 | 30 PSI      | 2 1/2" | 3 1/4" | 1" |
| <input type="checkbox"/> G61-060 | 60 PSI      | 2 1/2" | 3 1/4" | 1" |
| <input type="checkbox"/> G61-100 | 100 PSI     | 2 1/2" | 3 1/4" | 1" |
| <input type="checkbox"/> G61-160 | 160 PSI     | 2 1/2" | 3 1/4" | 1" |
| <input type="checkbox"/> G61-200 | 200 PSI     | 2 1/2" | 3 1/4" | 1" |
| <input type="checkbox"/> G61-300 | 300 PSI     | 2 1/2" | 3 1/4" | 1" |
| <b>3 1/2" FACE</b>               |             |        |        |    |
| <input type="checkbox"/> G62-030 | 30 PSI      | 3 1/2" | 4 1/4" | 1" |
| <input type="checkbox"/> G62-060 | 60 PSI      | 3 1/2" | 4 1/4" | 1" |
| <input type="checkbox"/> G62-100 | 100 PSI     | 3 1/2" | 4 1/4" | 1" |
| <input type="checkbox"/> G62-200 | 200 PSI     | 3 1/2" | 4 1/4" | 1" |
| <input type="checkbox"/> G62-300 | 300 PSI     | 3 1/2" | 4 1/4" | 1" |

jones stephens corporation  
 3249 moody parkway • moody, alabama 35004  
 toll free phone: 1-800-355-6637 • toll free fax: 1-800-462-6991  
[www.plumbest.com](http://www.plumbest.com)