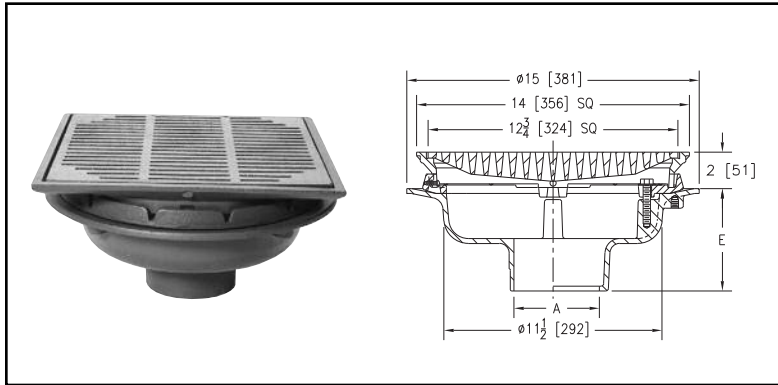
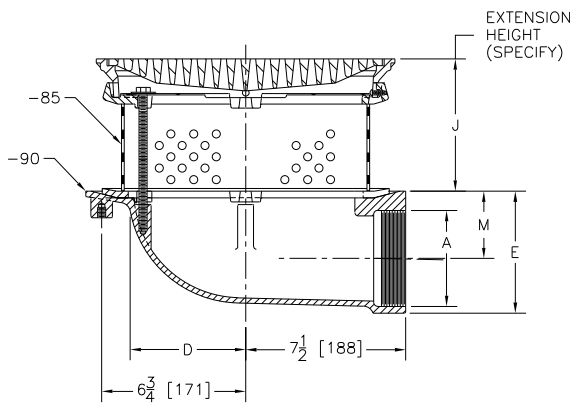


Z150 14" [356 mm] PROM-DECK DRAIN with Heel-Proof Grate



A Pipe Size Inches [mm]	Approx. Wt. Lbs. [Kg]	Grate Open Area Sq. In. [cm ²]
2 - 3 - 4 [51-76-102]	53 [24]	44 [284]
5 - 6 [127-152]		
8 [203]	54 [25]	

ENGINEERING SPECIFICATION: ZURN Z150 14" [356 mm] Square Top Prom-Deck Drain, Dura-Coated cast iron body with square promenade frame and heavy-duty, heel-proof grate with combination membrane flashing clamp/gravel guard.



Z150-85-90 Illustrated

Dimensions in Inches [mm]			
A	D	E	M
2 [51]	5-1/2 [140]	5-3/4 [146]	4-1/4 [108]
3 [76]			3-3/4 [95]
4 [102]			3-1/4 [83]
5 [127]	5-7/8 [149]	7-7/8 [200]	4-3/4 [121]
6 [152]			4-1/4 [108]

ZURN Z150-85-90 14" [356 mm] Square Top Prom-Deck Drain, as specified above, with perforated extension with flat clamp collar (-85), and 90° side outlet body (-90).

*Regularly furnished unless otherwise specified.

OPTIONS

OUTLETS (Specify pipe size in inches and type of outlet.)

OUTLET TYPE	OUTLET DESIGNATION Pipe Size/Outlet Type	'E' BODY HT. DIM. In./[mm]
Inside Caulk	2IC, 3IC, 4IC, 5IC, 6IC, 8IC	5-1/4" [133 mm]
Threaded	2IP, 3IP, 4IP, 5IP, 6IP, 8IP	3-3/4" [95 mm]
No-Hub	2NH, 3NH, 4NH, 5NH, 6NH, 8NH	5-1/4" [133 mm]
Neo-Loc	2NL, 3NL, 4NL	4-5/8" [118 mm]

PREFIXES

- Z** D.C.C.I. Body with Top*
- ZB** D.C.C.I. Body with Polished Bronze Top+
- ZN** D.C.C.I. Body with Polished Nickel Bronze Top+

+Add 3/16" [5 mm] to 2" [51 mm] dimension and 3/8" [10 mm] to 14" [356 mm] dimension.

SUFFIXES

- AR Acid Resistant Epoxy Coated Finish
- C Underdeck Clamp
- DB Deep Sump Body
- DG Duresist Grate
- DP Top-Set® Roof Deck Plate (Replaces both the -C and -R)
- DR Adjustable Drain Riser Extension Assembly
Adjustment from 3-5/8" [92 mm] to 7-1/4" [184 mm]
- DX Dex-O-Tex Flange
- E Static Extension 1" [25 mm] thru 4" [102 mm] (Specify Height)
- EA Adjustable Extension Assembly 1-3/4" [45 mm] thru 3-1/2" [89 mm]
For E and EA Extensions Greater Than 4" [102 mm] (Specify Height)
- ES Static Extension with Secondary Clamp Collar at Body
(For clamping at roof drain body.)
- G Galvanized Cast Iron
- R Roof Sump Receiver
- S Secondary Strainer
- SC Secondary Clamp Collar
- TC Neo-Loc Test Cap Gasket (2" [51 mm] to 4" [102 mm] NL Bottom Outlet Only)
- TS Top Secured with Slotted Screws
- VP Vandal-Proof Secured Top
- XJ Vertical Expansion Joint (See Z190)
- Y Sediment Bucket
- 85 Stainless Steel Perforated Extension
- 90 90° Threaded Side Outlet Body (2" [51 mm] thru 6" [152 mm])
(Previously Z153)