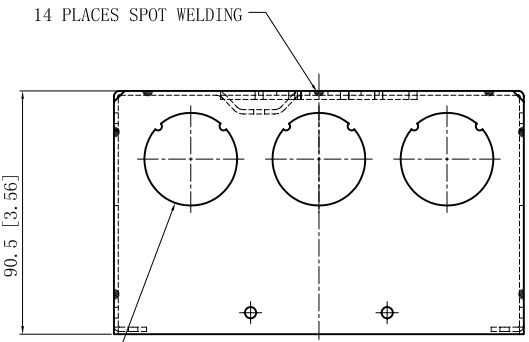
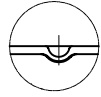
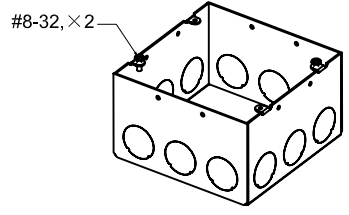


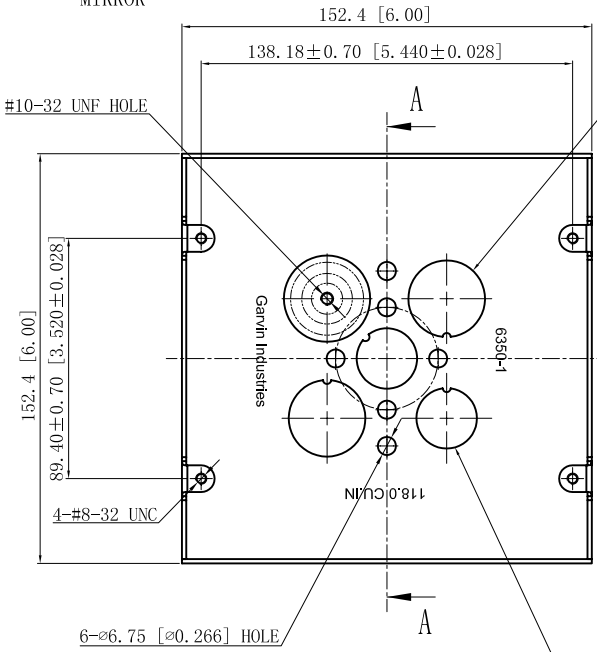
SIDES	BOTTOM
12 1" KNOCKOUTS	2 1/2" KNOCKOUTS
	2 3/4" KNOCKOUTS
	1 Ground hump
2 PCS 8-32 X 1/2 Screws Installed	
Material: Steel-0.0625"-G60 Galvanized	



6 1" KNOCKOUTC $\phi = 34.50$ ($\phi = 1.358$)
MIRROR

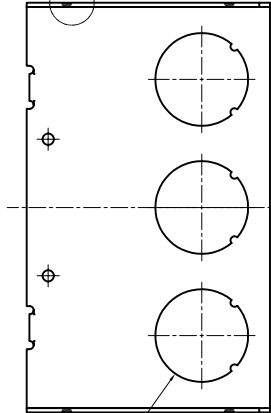


WELDING STYLE DETAIL VIEW B



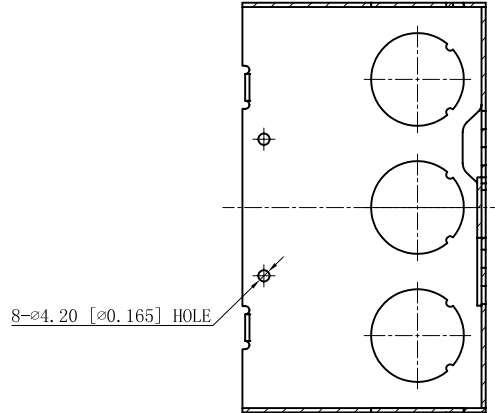
2 3/4" KNOCKOUTS $\phi = 28.50$ [$\phi = 1.122$]

B



6 1" KNOCKOUTC $\phi = 34.50$ ($\phi = 1.358$)
MIRROR

2 1/2" KNOCKOUTS $\phi = 22.50$ [$\phi = 0.886$]



CUTAWAY VIEW A-A

This data sheet is for reference only .GARVIN INDUSTRIES reserves the right to make changes to the design without prior notice.

DESCRIPTION
TRADE REFERENCE TERMS

STANDARD PACKING
10 PCS

TITLE GARVIN INDUSTRIES		REV B
SIZE A4	DWG NO. 6350-1	DATA SHEET