

MAINTENANCE

GENERAL CONSIDERATIONS

Design and installation are key factors to the operation of a grease interceptor. However, without disciplined maintenance, most performances are lost. For a manual interceptor to perform as designed, a strict maintenance schedule must be adhered to. If adequate maintenance is not performed, excessive grease buildup will occur until water laden with grease passes directly through the unit. Therefore, no matter how efficient the design or how proper the installation, grease interceptors perform only as well as the maintenance routine allows.

CLEANING

All grease interceptors must be cleaned regularly. The frequency of grease removal is dependent upon the capacity of the interceptor and the quantity of grease in the wastewater. Grease removal intervals may therefore vary from once a week to once in several weeks. When the grease removal interval has been determined for a specific installation, regular cleaning at that interval is necessary to maintain the rated efficiency of the interceptor. After the accumulated grease and waste material has been removed, the interceptor should be thoroughly checked to make certain the inlet, outlet, and air relief ports are clear of obstructions.

CLEANING CAN EASILY BE PERFORMED BY FOLLOWING THE STEPS LISTED BELOW:

1. Loosen and remove the fastener(s) securing the cover to the interceptor body.
2. Remove the cover.
3. Remove the flow diffusing baffle and/or sediment tray assembly from the body.
4. Wipe down the baffle assembly, disposing of grease in a proper waste container.
5. Clean out any liquid grease by skimming it from the top surface. Remove any remaining solid material with a spade or shovel.
6. Remove the clean-out plug on the outlet portion of the body. Using a clean water supply, hose down and wipe the inside of the body.
7. Replace the cleaned baffle assembly back into the unit.
8. Ensure that the cover gasket material is intact and in good working condition. Replace gasket material if it is damaged.
9. Securely refasten the cover and the clean-out plug back onto the trap.

All Zurn grease interceptor models, less the Z1160 series, are provided with a bronze cleanout plug on the outlet chamber of the unit. This cleanout allows access to the outlet piping, should a blockage occur during operation. The following chart gives reference to the interceptor series, size, and plug size (NPT threads) should the cleanout plug need replaced:

Note: The Z1160 series interceptors are provided with a plastic snap-in cleanout plug, accessible by removing the cover.

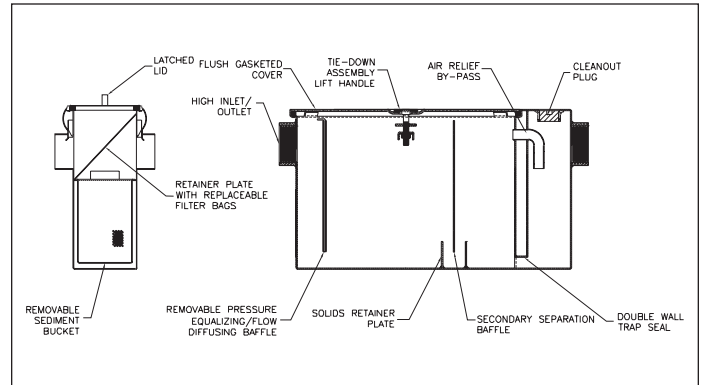
Series	Interceptor Size								
	100	200	300	400	500	600	700	800	900
Z1165	–	1-1/2	1-1/2	1-1/2	1-1/2	1-1/2	1-1/2	1-1/2	–
Z1170	1-1/2	1-1/2	1-1/2	1-1/2	1-1/2	1-1/2	1-1/2	1-1/2	–
ZS1170	1-1/2	1-1/2	1-1/2	1-1/2	1-1/2	1-1/2	1-1/2	1-1/2	–
Z1171	–	–	–	–	1-1/2	–	1-1/2	1-1/2	–
Z1171-RD	–	–	–	–	1-1/2	–	1-1/2	1-1/2	–
Z1171-TD	–	–	–	–	1-1/2	–	1-1/2	1-1/2	–
Z1173	–	1-1/2	1-1/2	1-1/2	1-1/2	1-1/2	1-1/2	1-1/2	1-1/2
Z1173-RD	–	1-1/2	1-1/2	1-1/2	1-1/2	1-1/2	1-1/2	1-1/2	1-1/2
Z1173-TD	–	1-1/2	1-1/2	1-1/2	1-1/2	1-1/2	1-1/2	1-1/2	1-1/2
Z1174	1-1/2	1-1/2	1-1/2	1-1/2	1-1/2	1-1/2	1-1/2	1-1/2	–
Z1192	–	–	–	1-1/2	1-1/2	1-1/2	1-1/2	1-1/2	–

Series	900	1000	1100	1200	1300	1400	1500	1600	1700	1800	1900
Z1172	1-1/2	1-1/2	3	3	3	3	3	3	3	3	3

PRODUCT INFORMATION

Z1165 100 PPM GREASE INTERCEPTOR

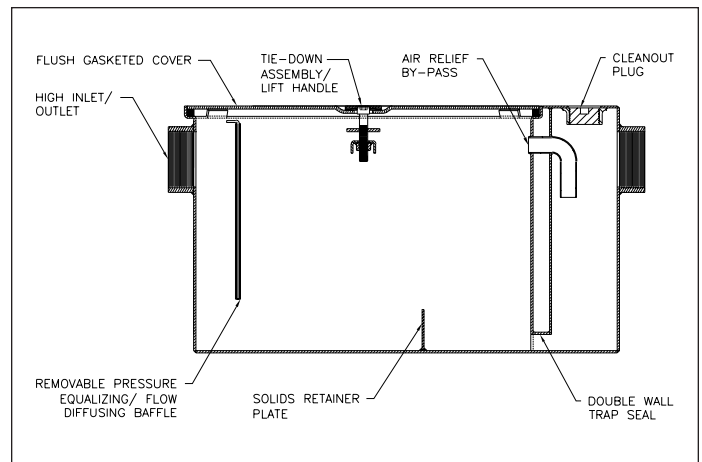
As effluent requirements become more stringent and code regulations become more and more enforced, Zurn realizes the need for a grease interceptor that can perform well beyond the average capabilities of a traditional style interceptor. The Z1165 100 PPM Grease Interceptor was designed to operate in the same time-proven manner as typical passive grease interceptors, while incorporating valuable patent pending features. Grease interceptor effluent efficiency meets 100 Parts Per Million when tested to EPA 1664 test method. Results based on the influent requirements in accordance with the maximum rated capacity given by Plumbing and Drainage Institute Standard PDI-G101.



Patent Pending

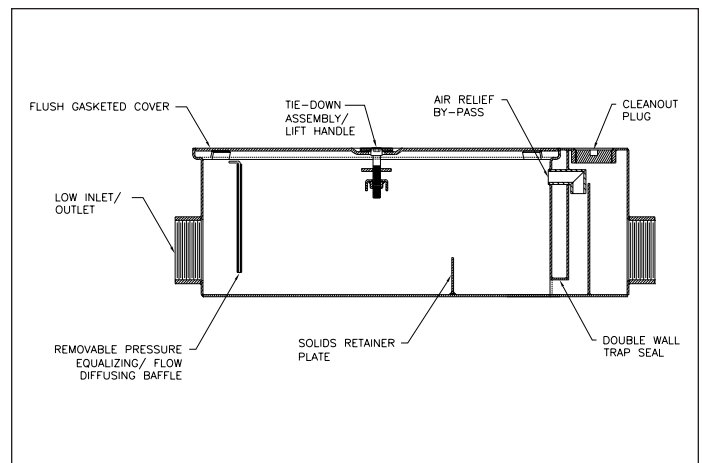
Z1170 GREASE INTERCEPTOR

The Zurn Z1170 Grease Interceptor is the most widely used of all Zurn interceptor models. Its versatility allows the unit to be installed in several different fashions, accommodating the majority of standard kitchen installations. Standard to the unit is an acid resistant epoxy coating to help protect from corrosion and help maintain a sanitary kitchen environment. The interceptor's diamond tread, anti-skid cover helps minimize slipping accidents when high-traffic kitchen floors become wet. There are numerous options available with this unit to help suit the needs of virtually any application.



Z1171 LOW PROFILE GREASE INTERCEPTOR

It is often common for area restrictions to dictate where plumbing fixtures may be located within a commercial kitchen. Due to limited space, it may not be practical to utilize a traditional style grease interceptor to service the fixtures. For applications such as this, Zurn has designed and constructed the Z1171 Low Profile Grease Interceptor. Grease separation is properly achieved, while the unit's low-profile design allows for on-the-floor placement underneath a sink, saving space for other important kitchen equipment. Standard to this unit is a low inlet and outlet height to accommodate for ease of drainage pipe installation. Care should be taken when locating this unit to allow sufficient space for cover and baffle removal during the maintenance process.



OPTIONS and VARIATIONS

All grease interceptor options and variations are specified as a PREFIX and/or SUFFIX letter or number added to the series designation. Listed below are the available options and a brief description of each.

PREFIXES

- Z** Acid Resistant Coated Fabricated Steel
- ZS** All Type 304 Fabricated Stainless Steel

SUFFIXES

-AL Aluminum Cover

This option can be used to allow for easier removal of the cover, since the weight of aluminum is approximately 65% lighter than the weight of steel. Because of its ability to form a very thin protective layer of oxide, aluminum is also very corrosion-resistant. Note: The heavy-duty cover option (-HD) cannot be specified when the aluminum cover is used.

-BB Timer Battery Backup (For Z1174)

-C30 Cable Length of 30 Feet For Digital Display (For Z1192)

-C45 Cable Length of 45 Feet For Digital Display (For Z1192)

-CS Custom Screens (For Z1174)

Specify material and perforation required.

-DI Dual High/Low Inlet

This option is provided to help accommodate inlet piping installation to the interceptor. A bronze plug is provided to seal the inlet that is not in use. Note: Because the invert of the low inlet is located below the invert of the outlet connection, standing water will be retained in the inlet piping when the unit is not in use. It is recommended at the end of the interceptor's daily use to run hot water through the unit. This will help purge out any grease that is contained inside of the inlet piping and prevent it from congealing to the walls of the pipe.

-E Extension

Acid resistant coated interior and exterior fabricated steel extension section. The extension option is specified when the grease interceptor is in a recessed installation and proper piping elevations must be met. Zurn extensions can be furnished in two different ways:

- 1.) Retro-fit extension:** This type of extension is a separate piece, bolted onto the top of the unit and gasketed. This allows for modification to the height of the unit after the unit has already been furnished. Note: The heavy-duty cover option (-HD) cannot be specified when a retrofit extension is used.
- 2.) Integral extension:** This type of extension is built directly into the unit as one piece.
Note: When specifying the extension option (-E), it is required that the overall height dimension ('C' Dimension) of the interceptor body be specified to ensure that the unit is furnished properly.

-HD Heavy Duty Cover

Reinforced cover rated at 10,000 lbs. maximum safe live load. When this option is specified, it is necessary to extend the overall height of the grease interceptor body to accommodate for necessary supports. The additional extension height does not have to be specified when ordering the product; it is automatically built into the unit as an integral part. The following chart illustrates the required extended height:

Model	Size	Extension Height Added To Unit
Z1160	All	3"
Z1165	All	3"
Z1170	All	3"
Z1172	900	4"
Z1172	1000	6"
Z1172	1100-1900	3"

-K Anchor Flange

Located 1-3/4" down from the top of the unit and 2" wide. The anchor flange is used for structural support when installing the unit. See note under (-KC) option for extension requirements.

-KC Anchor Flange with Clamp Collar

Located 1-3/4" down from the top of the unit and 2" wide. The anchor flange with clamp collar is designed for installations that require the use of a waterproofing membrane.

When the (-K) and (-KC) options are specified, it is necessary to extend the overall height of the grease interceptor body by 3" to accommodate attachment of the flange. The additional extension height does not have to be specified when ordering the product; it is automatically built into the unit as an integral part.

-L Angle-Type Flow Control Device

Provided with an integral plunger to unblock any waste material that may clog the passageway through the orifice. To operate simply move the plunger up and down, pushing it through the orifice, while running hot water through the flow control device.

-LS Less Solids Interceptor

-P Pump Only, 110 VAC (For Z1174)

-PW Plug Wrench

Tool designed to remove the cleanout plug on the grease and oil interceptor bodies. Tool is also used to remove the cover of the Z1175 and Z1176 hair interceptors.

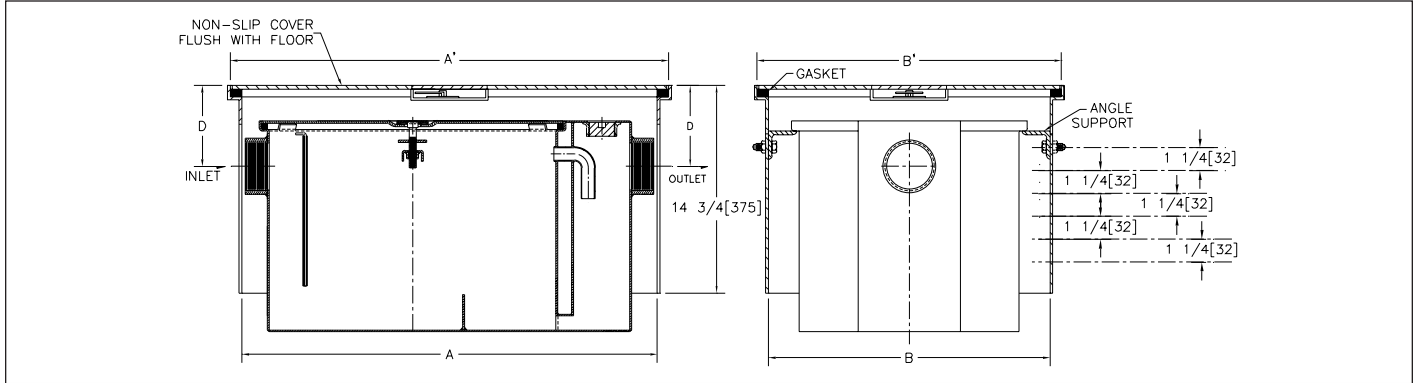
OPTIONS and VARIATIONS

SUFFIXES, continued

-R Recessing Receiver

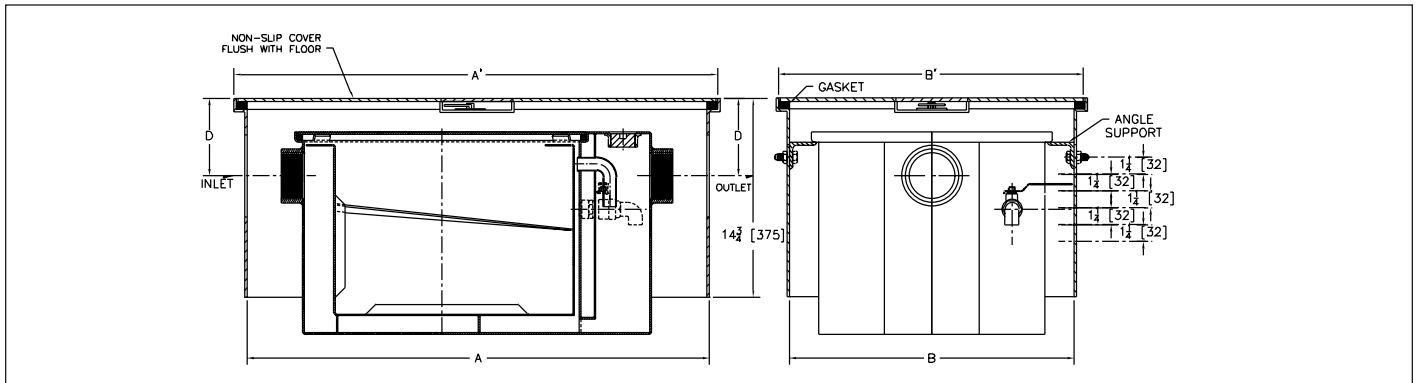
Acid resistant coated interior and exterior fabricated steel recessing receiver is used for applications where the interceptor is to be installed above or below grade after the concrete floor has been poured. Once the receiver body and drain lines are in place, the interceptor can be installed at a later date, without damage to the concrete and finished floor.

Z1170-R Illustrated



Size	A	A'	B	B'	D
100	19-3/4	21-3/4	12-3/4	14-3/4	4-3/4
200	21-3/4	23-3/4	15-3/8	17-3/8	5-1/8
300	25	27	17-1/2	19-1/2	5-1/2
400	25-3/4	27-3/4	20	22	6
500	29-1/2	31-1/2	20-3/4	22-3/4	5-1/4
600	34	36	23-1/4	25-1/4	6-1/2
700	35	37	26	28	6-1/2
800	37-1/4	39-1/4	28	30	7-1/2

Z1173-R Illustrated



Size	A	A'	B	B'	D
200	26-1/4	28-1/4	15-3/8	17-3/8	5-1/8
300	29-1/2	31-1/2	17-1/2	19-1/2	5-1/2
400	31-5/8	33-5/8	20	22	6
500	34-1/4	36-1/4	20-3/4	22-3/4	5-1/4
600	39-1/2	41-1/2	23-1/4	25-1/4	6-1/2
700	40	42	26	28	6-1/2
800	42-3/4	44-3/4	28	30	7-1/2
900	45-1/8	47-1/8	32	34	6-1/4

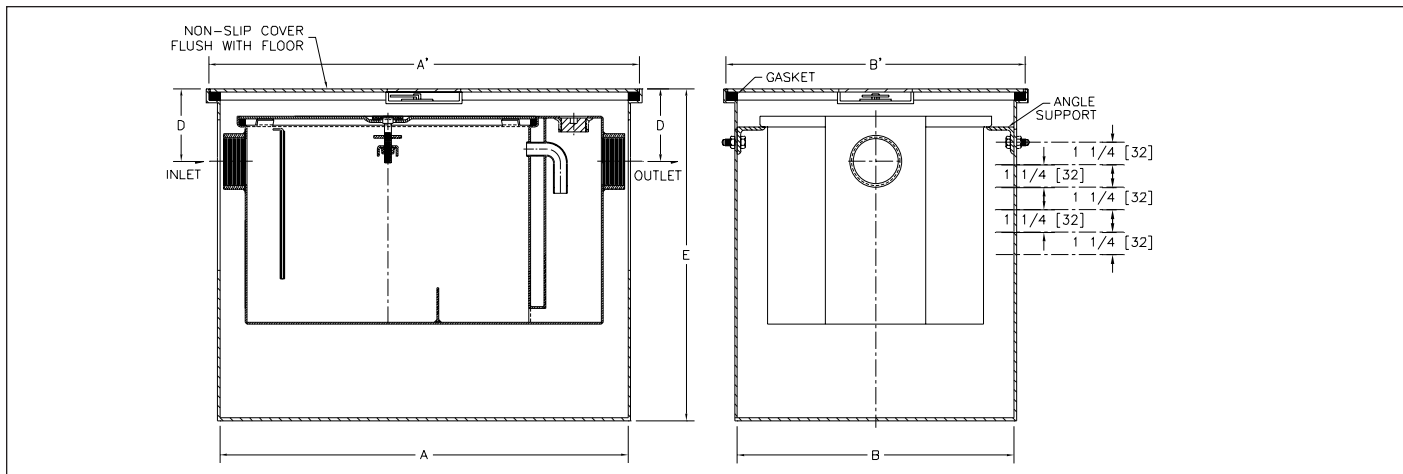
OPTIONS and VARIATIONS

SUFFIXES, continued

-RE Recessing Receiver - Enclosed Type

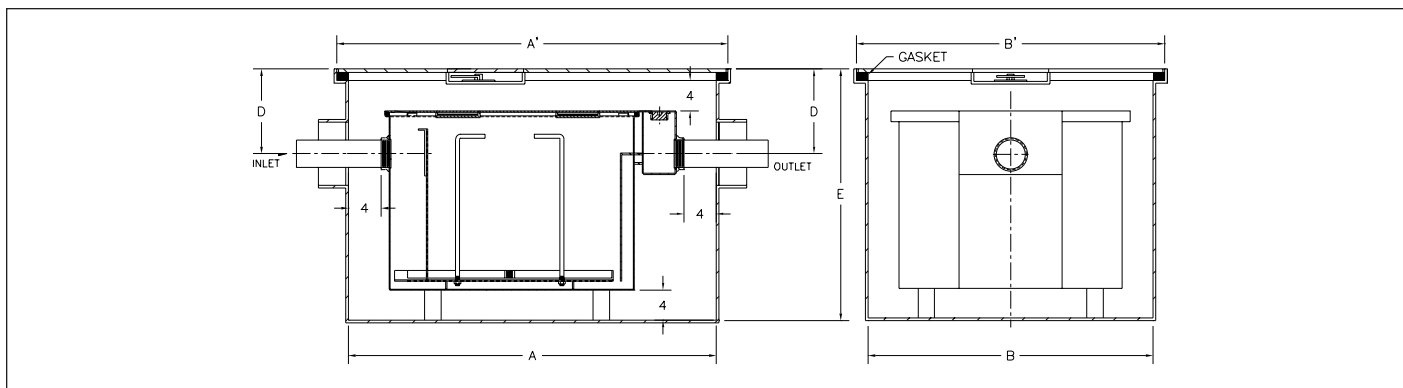
This type of recessing receiver is specified for above or below grade installations where a drip pan is required. The enclosed bottom of the receiver will contain any spillage of waste material and water from the interceptor during the cleaning and maintenance process.

Z1170-RE Illustrated



Size	A	A'	B	B'	D	E
100	19-3/4	21-3/4	12-3/4	14-3/4	4-3/4	19
200	21-3/4	23-3/4	15-3/8	17-3/8	5-1/8	20-1/4
300	25	27	17-1/2	19-1/2	5-1/2	20-3/4
400	25-3/4	27-3/4	20	22	6	22-3/8
500	29-1/2	31-1/2	20-3/4	22-3/4	5-1/4	24
600	34	36	23-1/4	25-1/4	6-1/2	25-3/4
700	35	37	26	28	6-1/2	27-3/4
800	37-1/4	39-1/4	28	30	7-1/2	30-1/2

Z1172-RE Illustrated



Size	A	A'	B	B'	D	E
900	44-1/4	46-1/4	33-1/8	35-1/8	9	31-1/4
1000	51	53	38-1/8	40-1/8	8-3/4	35-1/2
1100	57-1/2	59-1/2	44-1/2	46-1/2	10-3/8	38-5/8
1200	64-1/4	66-1/4	46-1/8	48-1/8	10-1/4	39-1/4

OPTIONS and VARIATIONS

SUFFIXES, continued

-T Cover Recessed for Tile

This option is used in applications where the interceptor or recessing receiver is installed in a finished floor area. A polished stainless steel frame is provided with the interceptor cover recessed for the required tile. (Specify the required recess depth: 1/8", 3/4", or 1-1/4".)

Note: When the (-T) option is specified, it is necessary to extend the overall height of the grease interceptor body by 3" to accommodate for the recessed frame. The additional extension height **does not** have to be specified when ordering the product; it is automatically built into the unit as an integral part.

-XB Extra Solids Interceptor Sediment Basket

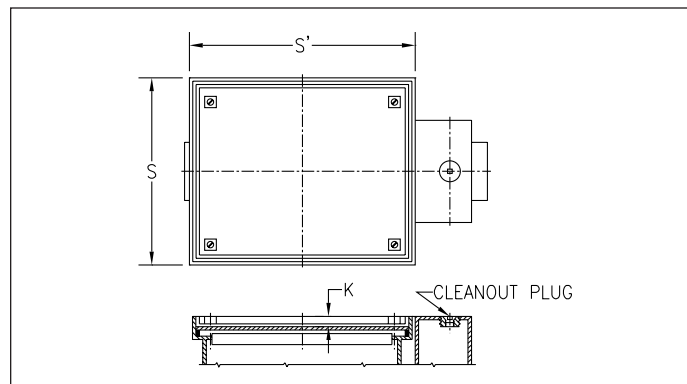
-XF Extra Supply of 30 Solids Filter Bags

-XG Extra Supply of 30 Grease Containment Bags (For Z1192)

-1 One-Gallon [4 L] Grease Eating Bacteria Only (For Z1174)

-5 Five-Gallon [19 L] Grease Eating Bacteria Only (For Z1174)

Z1170-E-T Illustrated



Size	Vinyl Tile			Ceramic Tile		
	K	S	S'	K	S	S'
300	1/8	14	16-7/8	3/4	14-5/8	17-1/2
400	1/8	16-3/4	18-7/8	3/4	17-3/8	19-1/2
500	1/8	17-1/4	21-3/4	3/4	17-7/8	22-3/8
600	1/8	19-7/8	23-3/4	3/4	20-1/2	24-3/8
700	1/8	22-1/2	25-5/8	3/4	23-1/8	26-1/4
800	1/8	24-1/2	27-1/2	3/4	25-1/8	28-1/8
Size	Terrazzo Tile			Quarry Tile		
	K	S	S'	K	S	S'
300	1-1/4	14-5/8	17-1/2	1-1/4	14-5/8	17-1/2
400	1-1/4	17-3/8	19-1/2	1-1/4	17-3/8	19-1/2
500	1-1/4	17-7/8	22-3/8	1-1/4	17-7/8	22-3/8
600	1-1/4	20-1/2	24-3/8	1-1/4	20-1/2	24-3/8
700	1-1/4	23-1/8	26-1/4	1-1/4	23-1/8	26-1/4
800	1-1/4	25-1/8	28-1/8	1-1/4	25-1/8	28-1/8