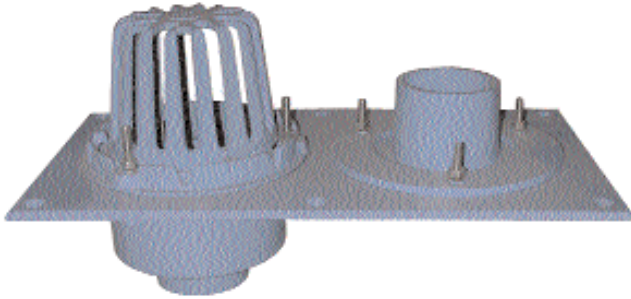


SPECIFICATION SUBMITTAL SHEET

jones stephens corporation

NO HUB DUAL ROOF DRAINS



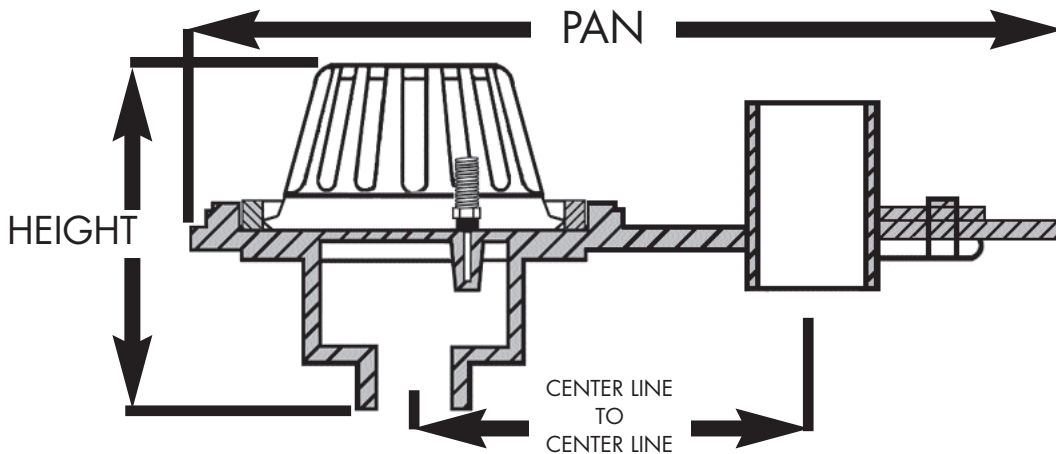
features and benefits:

- Supplied with stainless steel bolts



THIS PRODUCT HAS BEEN
IAPMO APPROVED!

This product and others like it can be found in the Jones Stephens catalog. Call today to order your catalog or download it from our website: www.plumbest.com



PART NO.	PIPE SIZE	CENTER TO CENTER	PAN	HEIGHT
<input type="checkbox"/> R19-302	2" No Hub Dual Drain	8 1/2"	19"	8"
<input type="checkbox"/> R19-303	3" No Hub Dual Drain	8 1/2"	19"	9-1/2"
<input type="checkbox"/> R19-304	4" No Hub Dual Drain	8 1/2"	19"	10"
<input type="checkbox"/> R19-307	2" No Hub Dual Dome Drain	8 1/2"	19"	8-1/2"
<input type="checkbox"/> R19-305	3" No Hub Dual Dome Drain	8 1/2"	19"	10"
<input type="checkbox"/> R19-306	4" No Hub Dual Dome Drain	8 1/2"	19"	10-1/2"

jones stephens corporation
 3249 moody parkway • moody, alabama 35004
 toll free phone: 1-800-355-6637 • toll free fax: 1-800-462-6991
www.plumbest.com