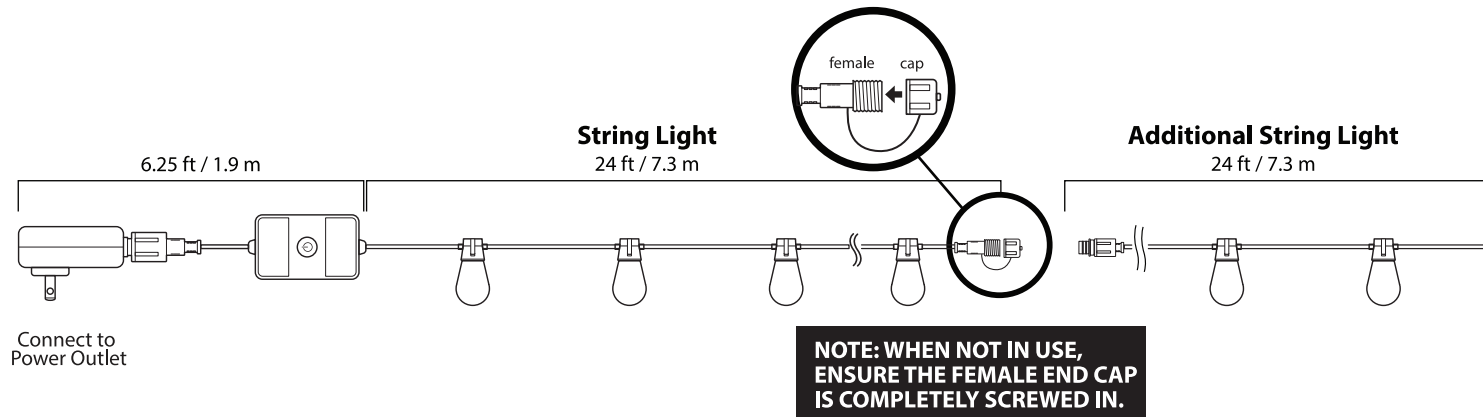
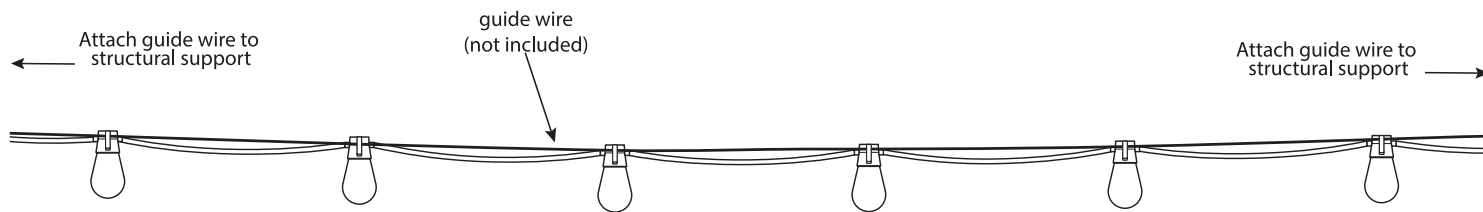


INSTALLING STRING LIGHTS



INSTALLATION METHODS

1. Using a guide wire with clips on the sides of lights.



DRAWINGS NOT TO SCALE.

CONNECTING MULTIPLE SETS

MAXIMUM WATTAGE	NUMBER OF LIGHT STRINGS
14 WATTS	DO NOT EXCEED MORE THAN 2 SETS

TROUBLESHOOTING

1. Confirm power is turned On.
2. Before performing any troubleshooting, make sure to unplug string light completely from power supply.
3. Please contact our customer service department should you need further assistance.

TO REDUCE THE RISK OF FIRE: Do not replace the attachment plug. It contains a safety device (fuse) that should not be removed. Discard product if the attachment plug is damaged.

LIMITED WARRANTY

This product is warranted to be free from defects in workmanship and materials for up to 1 year from date of purchase. If the product fails within the warranty period, please visit feit.com/help for help. REPLACEMENT OR REFUND IS YOUR SOLE REMEDY. EXCEPT TO THE EXTENT PROHIBITED BY APPLICABLE LAW, ANY IMPLIED WARRANTIES ARE LIMITED IN DURATION TO THE DURATION OF THIS WARRANTY. LIABILITY FOR INCIDENTAL OR CONSEQUENTIAL DAMAGES IS HEREBY EXPRESSLY EXCLUDED. Some states and provinces do not allow the exclusion of incidental or consequential damages, so the above limitation or exclusion may not apply to you. This warranty gives you specific legal rights, and you may also have other rights which vary from state to state or province to province.

Supplier's Declaration of Conformity: 47 CFR § 2.1077 Compliance Information

Responsible Party: Feit Electric Company, 4901 Gregg Road, Pico Rivera, CA 90660, USA 562-463-2852

Unique Identifier: LVSL24-12/RGBW/AG



This device complies with part 15 of the FCC Rules. Operation is subject to the following two conditions: (1) This device may not cause harmful interference, and (2) this device must accept any interference received, including interference that may cause undesired operation.

This equipment has been tested and found to comply with the limits for a Class B digital device, pursuant to part 15 of the FCC Rules. These limits are designed to provide reasonable protection against harmful interference in a residential installation. This equipment generates, uses and can radiate radio frequency energy and, if not installed and used in accordance with the instructions, may cause harmful interference to radio communications. However, there is no guarantee that interference will not occur in a particular installation. If this equipment does cause harmful interference to radio or television reception, which can be determined by turning the equipment off and on, the user is encouraged to try to correct the interference by one or more of the following measures: Reorient or relocate the receiving antenna. Increase the separation between the equipment and receiver. Connect the equipment into an outlet on a circuit different from that to which the receiver is connected. Consult the dealer or an experienced radio/TV technician for help. Any changes or modifications not expressly approved by the manufacturer could void the user's authority to operate the equipment.

Radiation Exposure Statement

This device complies with FCC radiation exposure limits set forth for an uncontrolled environment. This device should be installed and operated with a minimum distance of 20cm between the radiator and your body. The performance specifications (life hours) printed on this manual should only be considered an approximation of expected performance.

MODEL LVSL24-12/RGBW/AG

FEIT
ELECTRIC

SMART- COLOR CHANGING LED STRING LIGHTS

IMPORTANT RETAIN FOR FUTURE USE: READ CAREFULLY

When using electrical products, basic precautions should always be followed including the following:

- READ AND FOLLOW ALL SAFETY INSTRUCTIONS**
- If used outdoors or with water present, connect this product to a Ground Fault Circuit Interrupting (GFCI) outlet. If one is not provided, contact a qualified electrician for proper installation.
- Do not mount or place near gas or electric heaters, fireplace, candles, or other similar sources of heat.
- Do not secure the wiring of the product with staples or nails, or place on sharp hooks or nails.
- Install only using the mounting means provided.
- Do not let lamps rest on the supply cord or on any wire.
- Do not use this product for other than its intended use.
- Do not hang ornaments or other objects from the cord, wire, or lamps.
- Do not close doors or windows on the product or extension cords as this may damage the wire insulation.
- Do not cover the product with cloth, paper or any material not part of the product when in use.
- Keep lamps away from any combustible surface.
- Read and follow all instructions that are on the product or provided with the product.
- This product should be installed out of the reach of children.
- String Lights should be installed so that bulbs are facing down ONLY.
- Do not secure String Lights to buildings or other structural supports using nails, staples or other sharp, conducting materials. DO NOT DAMAGE THE WIRE.
- Do not submerge.



Only supports
2.4GHz Wi-Fi
networks



Works with
Feit Electric app

SAVE THESE INSTRUCTIONS

CAUTION:

1. To avoid risk of shock, always make sure the product is unplugged from the electrical outlet before assembling, disassembling, installing, relocating, servicing or cleaning it.
2. Do not overload. This string light is rated for 7 Watts. Connect up to two total string lights end-to-end for a maximum of 14 Watts total.
3. Do not use with extension cord near water or where water may accumulate. Keep at least 4.8 m / 16 ft from pools and spas. Keep plugs and receptacles dry. Do not submerge.

Model Number: LVSL24-12/RGBW/AG

Connecting Sets End-to-End.

Connect up to two sets together and do not exceed the lowest of the indicated maximum wattage on the cord tag near the connected product's receptacle.

BATTERY WARNING:

Risk of fire, explosion, and burns. Do not disassemble, crush, heat above 100° C / 212° F or incinerate. Replace with 2 x AAA 1.5V Batteries. DISPOSE OF USED BATTERY PROMPTLY. KEEP AWAY FROM CHILDREN. DO NOT DISASSEMBLE AND DO NOT DISPOSE OF IN FIRE. When replacing battery, ensure the new battery is installed correctly with regard to polarity (+ and -) as shown on remote.

CAUTION:

Dispose of used battery promptly according to local recycling or waste regulations. Clean battery contacts and also device contacts prior to installing battery. Ensure the battery is installed correctly with regard to polarity (+ and -). Remove battery from remote when not being used for an extended period of time. Remove used battery promptly.

Getting Started:

1 Download the Feit Electric app on your smart device.



Feit Electric app

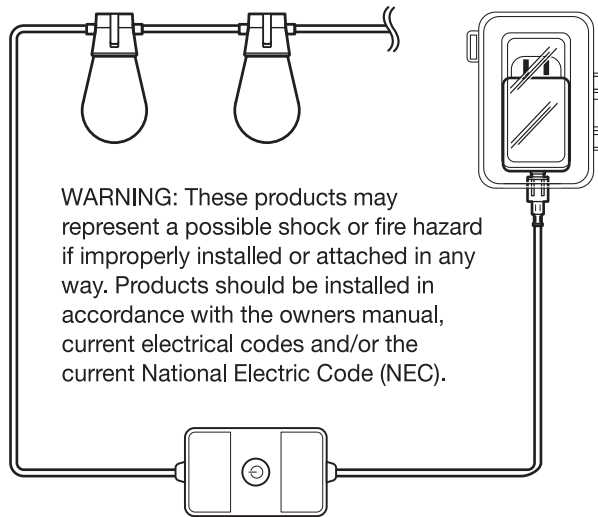


2 Install your Smart String Lights

See "Installing String Lights" Section on page 4. Inter-connect additional sets, up to 2 sets.

3 Plug in your Smart String Lights

Plug the Smart String Lights into an outdoor rated GFCI receptacle.



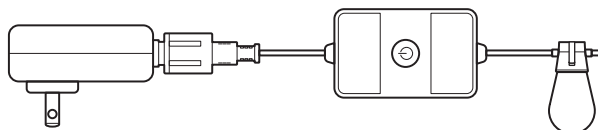
WARNING: These products may represent a possible shock or fire hazard if improperly installed or attached in any way. Products should be installed in accordance with the owners manual, current electrical codes and/or the current National Electric Code (NEC).

You are now ready to use the String Lights via RF Remote. See "RF Remote Control" section for more details.

To activate smart features proceed to steps 4 & 5.

4 Pair your device

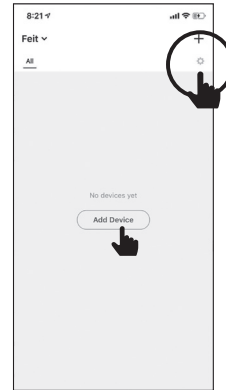
Press and hold for 5 seconds when lights are On to enter pairing mode. Lights will pulse soft white.



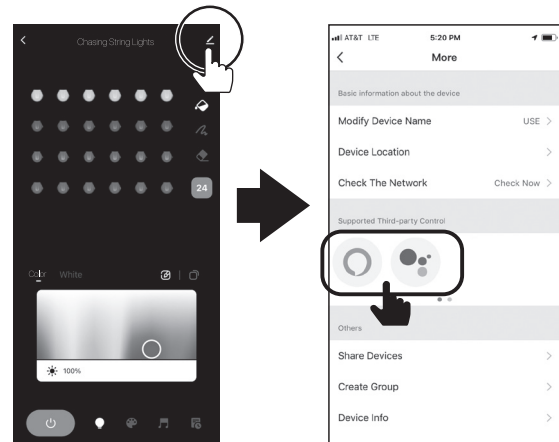
5 Launch and use the Feit Electric app to complete the set up

Tap **Add Device** or the + sign, then select **String Lights** and confirm. You will be prompted to enter your Wi-Fi network and password.

Be sure to connect to a 2.4 GHz Wi-Fi network that covers your installation location.



(Optional) Connect to Google Assistant or Alexa using the in App guide



Tap Pen icon

Choose **Alexa** or **Google**

Need Help?

Thank you for your purchase
Questions, comments or feedback?
We'd love to hear from you.
Visit feit.com/help for support or connect with us:



@FeitElectric

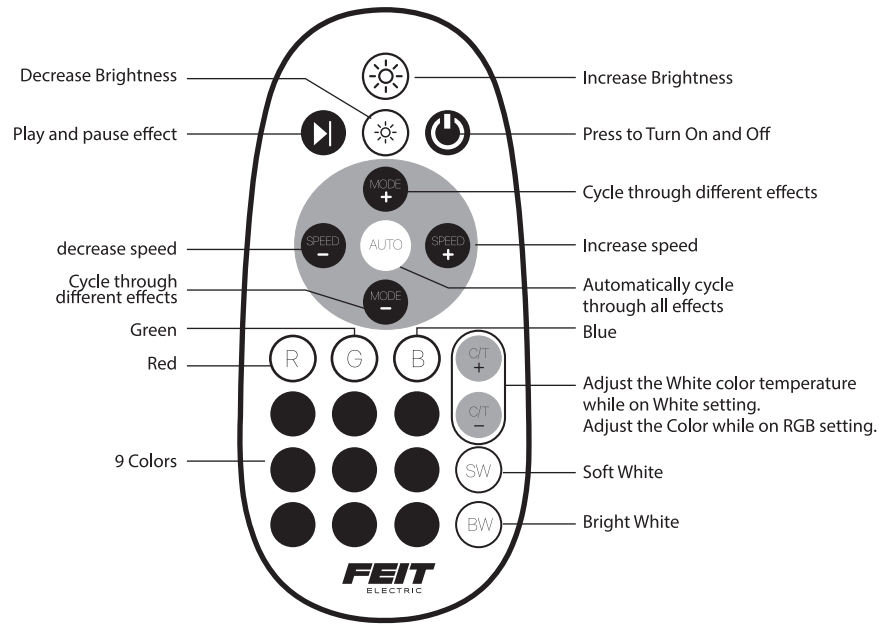


@FeitElectricInc

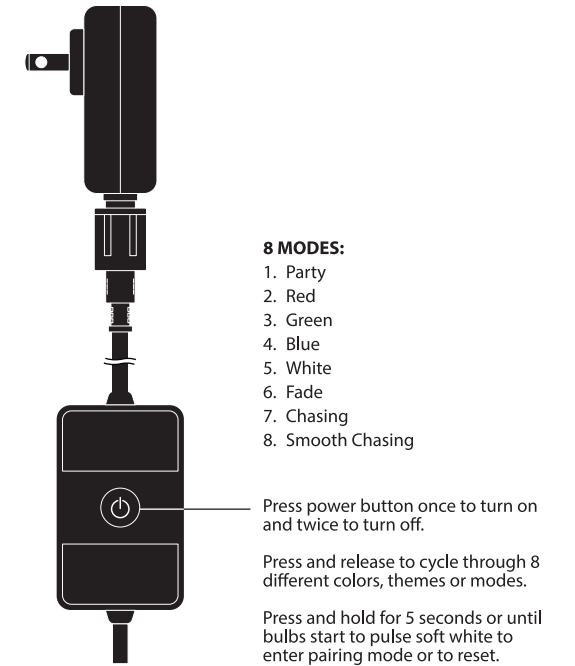


feitelectriclighting

RF remote control



Power Supply Control Box

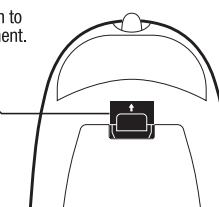


CAUTION:

Dispose of used battery promptly according to local recycling or waste regulations. Clean battery contacts and also device contacts prior to installing battery. Ensure the battery is installed correctly with regard to polarity (+ and -). Remove battery from remote when not being used for an extended period of time. Remove used battery promptly. The LEDs in this strip light are not replaceable.

Uses 2 x AAA 1.5V Batteries

Push in tab and pull out latch to access the battery compartment.



For additional remote controls, please contact Feit Electric at 1-866-326-BULB (2852).

- **WARNING - KEEP BATTERIES OUT OF THE REACH OF CHILDREN.**
- Remove immediately recycle or dispose of used batteries according to local regulations and keep away from children. Do NOT dispose of batteries in household trash or incinerate.
- Even used batteries may cause severe injury or death.
- Call a local poison control center for treatment information if needed.
- Always purchase the correct size and type of battery most suitable for the intended use.
- Non-Rechargeable batteries are not to be recharged.
- Do not force discharge, recharge, disassemble, heat above 45°C/113°F or incinerate. Doing so may result in injury due to venting, leakage or explosion resulting in chemical burns.
- Ensure the batteries are installed correctly with regard to polarity (+ and -).
- Do not mix old and new batteries, different brands or types of batteries, such as alkaline, carbon-zinc, or rechargeable batteries.
- Remove and immediately recycle or dispose of batteries from equipment not used for an extended period of time according to local regulations.
- Always completely secure battery compartment. If battery compartment does not close securely, stop using the product, remove the batteries, and keep them away from children.

TROUBLESHOOTING TIPS - WI-FI

If you are having difficulty connecting:

- Make sure the Wi-Fi network is a 2.4 GHz network. Smart String Lights will not connect to a 5 GHz network.
- Test your Wi-Fi network with other devices such as your phone to make sure it is operating properly.
- The Wi-Fi connection may not have good coverage during set up. Try moving the Smart String Lights closer to your Wi-Fi router.
- Your Wi-Fi network password is case sensitive, make sure you are entering correctly. Devices plugged into your Smart Wi-Fi Plug must be ON in order to be controlled via the mobile app.

Please also check the App User Guide for more information.

PAIRING AND UNPAIRING ADDITIONAL STRING LIGHTS

The included Remote Control is already paired to the string light and will operate normally.

To control additional string lights with your Remote Control:

1. Unplug the additional string light, then plug it back in.
2. Within 20 seconds of plugging it in, press and hold the On/Off button on the Remote Control you want to use until the string light bulbs blink quickly 3 times.
3. Now, this additional string light will work with both this Remote Control and the one it originally came with.

NOTE: Link up to two 24ft string lights end-to-end for a total of 48ft. You can pair a Remote Control to any number of separately powered string lights.

To unpair a Remote Control from a string light:

1. Unplug the string light you want to unpair from the Remote Control, then plug it back in.
2. Within 20 seconds of plugging it in, press and hold the On/Off button on the Remote Control you want to unpair it from until the string light bulbs blink slowly 5 times.
3. This string light will no longer respond to that Remote Control.