

NOTES: UNLESS OTHERWISE SPECIFIED

1. MATERIALS:

BODY AND SHROUD: BRASS PER ASTM B16
 CENTER CONTACT: COPPER ALLOY
 RETAINER RING: BERYLLIUM COPPER PER ASTM B194
 INSULATOR: TEFLON PER ASTM D1710

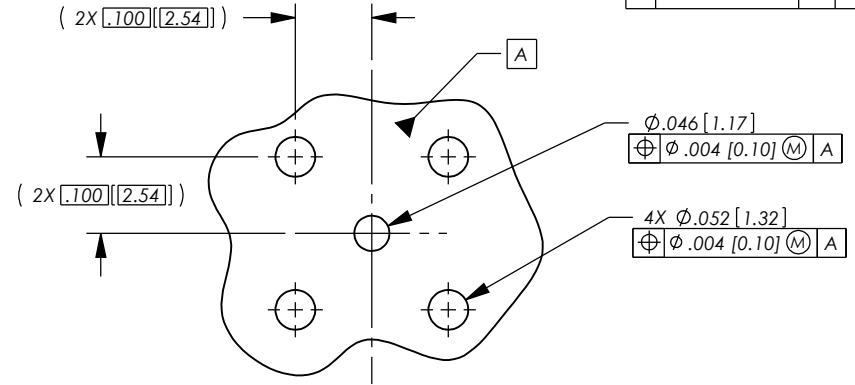
2. FINISH:

BODY: 000015 MIN GOLD PER ASTM B488 OVER .00080 MIN NICKEL PER AMS-QQ-N-290
 SHROUD: 000005 MIN GOLD PER ASTM B488 OVER .00080 MIN NICKEL PER AMS-QQ-N-290
 CENTER CONTACT: 000030 MIN GOLD PER ASTM B488 OVER .00080 MIN NICKEL PER AMS-QQ-N-290

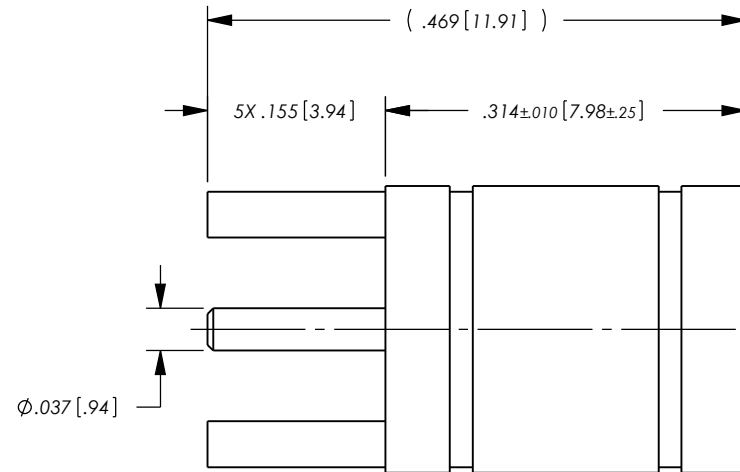
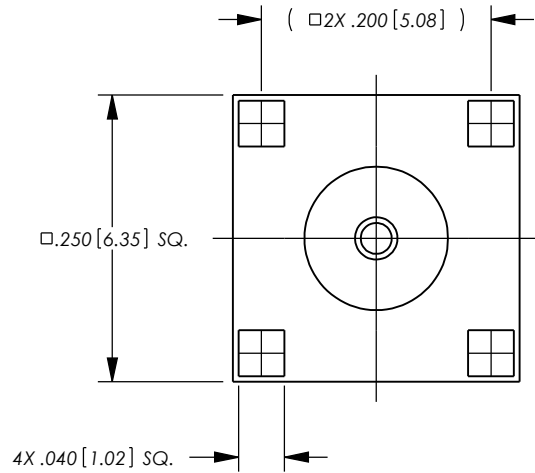
3. ELECTRICAL SPECIFICATION:

NOMINAL IMPEDANCE: 50 OHMS
 FREQUENCY RANGE: DC-4GHz

REV	DESCRIPTION	BY DATE	APPD
A	RELEASED PER ER26357	KPL 07/21/10	DCAM



RECOMMENDED HOLE PATTERN



CATALOG P/N: 520-060-0040H

PER ASME Y14.5M-1994 UNLESS OTHERWISE SPECIFIED: DIMENSIONS ARE IN INCHES [MM] TOLERANCES: DECIMAL: .XX [X.X] ± .01 [0.3] .XXX [X.XX] ± .005 [0.13] .XXXX [X.XXX] ± .0005 [0.01] ANGLES: ± 2° SCALE: 6:1				Winchester Electronics Corporation 62 Barnes Industrial Road North Wallingford, Connecticut 06492	
CUSTOMER DRAWING			SMB, SLIDE-ON MOUNT RECEPTACLE		
DRAWN	DATE	APPROVED	DATE		
KPL	07/19/10	WPM	07/21/10		
APPROVED	DATE	APPROVED	DATE		
DCAM	07/20/10	XXX	XX/XX/XX		
A SD520-060-0040H				SHT 1 OF 1	
				REV A	