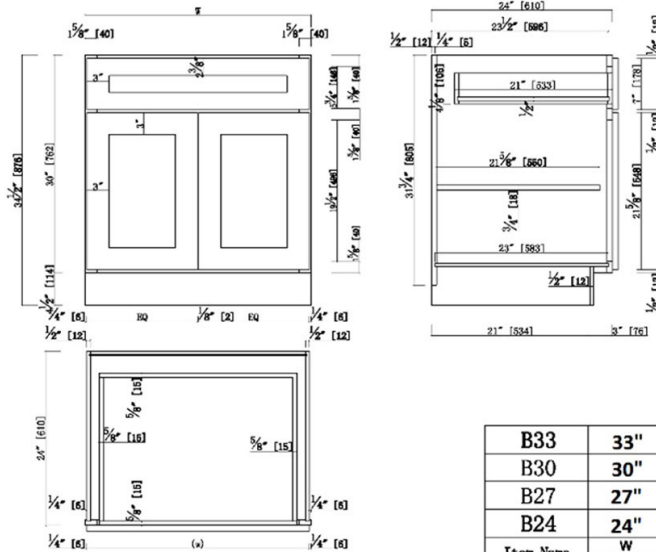


## Brookings Unassembled Shaker Base Kitchen Cabinet 33x34.5x24 Espresso



	B33	33"	32.5"	16.25"
B30	30"	29.5"	14.75"	
B27	27"	26.5"	13.25"	
B24	24"	23.5"	11.75"	
Item Name	W	(w)	EQ	

### SPECIFICATIONS

**MATERIAL CONSTRUCTION:** Wood  
**WOOD SPECIES:** Maple  
**ASSEMBLED DIMENSIONS:** 34.5" H x 33" L x 24" D  
**ASSEMBLED WEIGHT:** 71.92 lbs.  
**KITCHEN CABINET TYPE:** Base  
**MOUNTING TYPE:** Floor Mount  
**CONSTRUCTION TYPE:** Face Frame  
**HINGE STYLE:** Soft Close  
**DOOR STYLE:** 2 Wood shaker doors

**DRAWER DIMENSIONS 1:** 4.17" H x 21" L x 29.44" D  
**DRAWER DIMENSIONS 2:** N/A  
**DRAWER DIMENSIONS 3:** N/A  
**DWR BOX MATERIAL:** SOLID WOOD  
**DWR CONSTRUCTION:** Dove Tail  
**DWR GLIDE:** Dove Tail  
**FAKE DWR QTY:** 0  
**FAKE DWR LOCATION:** N/A

**WARRANTY:** 1-Year limited warranty  
**LEGAL FOR SALE IN CALIFORNIA:** Yes  
**CARB COMPLIANT:** CARB Phase 2  
**TSCA TITLE IV COMPLIANT:** Yes

**NUMBER OF SHELVES:** 1  
**SHELF STYLE:** Flat  
**ADJUSTIBLE SHELVES:** Yes  
**SHELF ADJUSTIBILITY INCREMENTS:** 2.5"  
**SHELF DIMENSIONS:** 31.5" W x 21.625" D  
**SHELF THICKNESS:** 0.75"  
**SHELF MATERIAL:** Plywood  
**FACE FRAME MATERIAL:** Solid Maple  
**SIDES MATERIAL:** Plywood  
**BOTTOM MATERIAL:** Plywood  
**BACK PANEL MATERIAL:** Plywood  
**BACK BRACE MATERIAL:** Wood  
**TOE KICK INSET WIDTH:** 3"  
**TOOLS NEEDED FOR INSTALLATION:** Phillips Screwdriver  
Mallet Wood Glue  
Wood Screw  
**FASTENER TYPE:**



**TYPE:**  
**JOB:**  
**ORDER CODE:**  
**APPROVALS:**