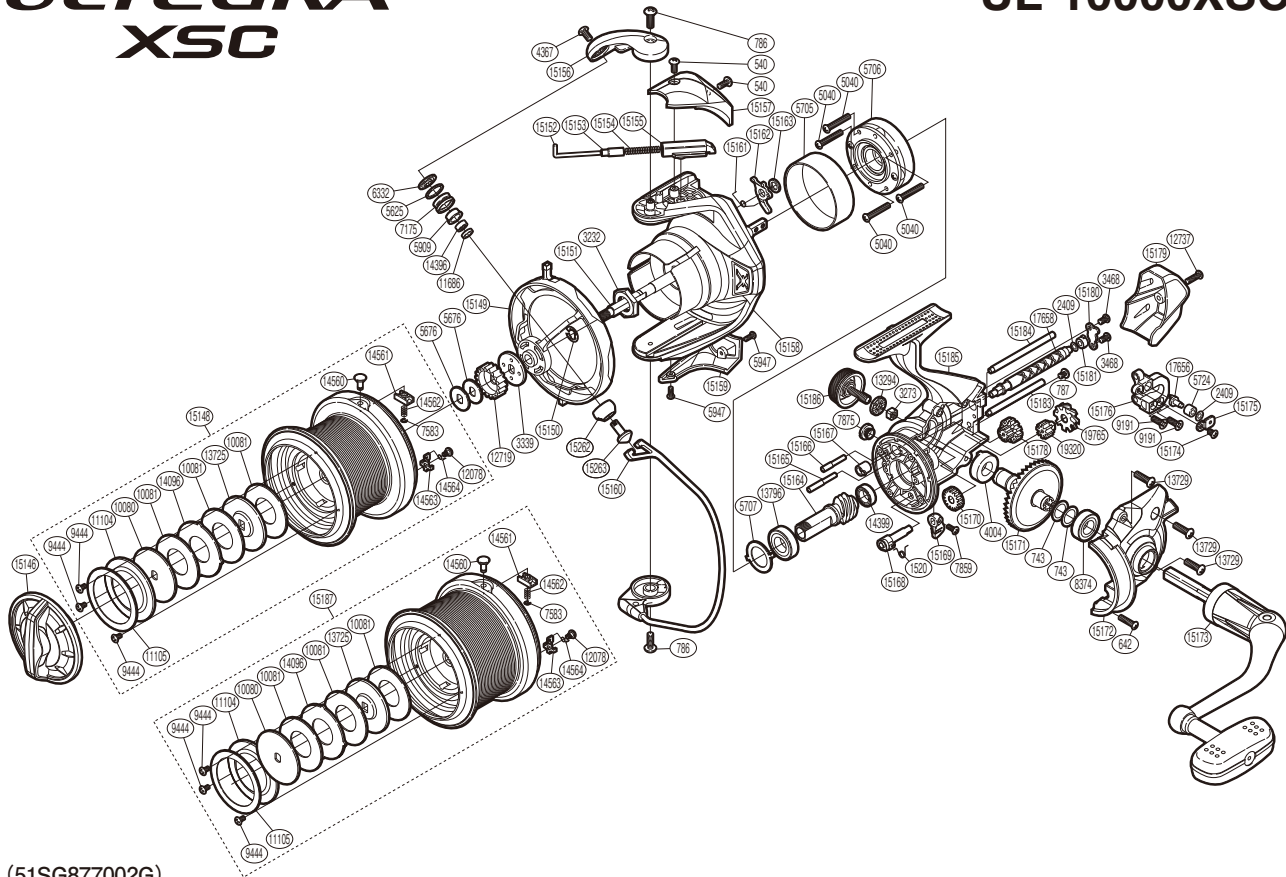


# SHIMANO

## ULTEGRA XSC

## UL-10000XSC



(51SG877002G)

#	Part No.	Description	#	Part No.	Description	#	Part No.	Description
540	103GS	Screw	11104	10B3Q	Seal Plate A	15161	106PM	Lever Spring
642	10M35	Screw	11105	10PLR	Seal Plate B	15162	106KD	Bail Trip Lever
743	10HHL	Washer	11686	10GAD	Bearing Spacer	15163	10764	Washer
786	103J1	Screw	12078	10PH4	Screw	15164	10BV7	Pinion Gear
787	103L6	Screw	12719	10Q04	Spool Support A	15165	10CKK	Idle Gear B Shaft
1520	105B2	Anti-Reverse Cam Spring	12737	10LHY	Screw	15166	10H4E	Idle Gear C Shaft
2409	1059U	Spacer	13294	108X6	Handle Screw Lock Washer	15167	106M2	Worm Bushing (Front)
3232	107VW	Rotor Nut	13725	10PLN	Key Washer	15168	1053M	Anti-Reverse Cam
3273	10C6H	Handle Screw Lock	13729	10MBR	Screw	15169	10G2T	Anti-Reverse Lever
3339	13LK6	Spool Support B	13796	104PX	Ball Bearing	15170	10HBG	Idle Gear
3468	10LSN	Screw	14096	10N2H	Eared Washer	15171	109FQ	Drive Gear
4004	10C2D	Drive Gear Bushing	14396	104VQ	Ball Bearing	15172	10BZB	Side Cover
4367	10PMS	Screw	14399	105BK	Ball Bearing	15173	10JAV	Handle Assembly
5040	103LA	Screw	14560	10QS6	Line Clip	15174	103L1	Screw
5625	10KFF	Line Roller Spacer	14561	10JQV	Line Clip Holder	15175	10HAD	Oscillating Pawl Cover
5676	106VN	Spool Washer	14562	10LQ3	Line Clip Spring	15176	10G62	Oscillating Slider
5705	106HS	Roller Clutch Ring	14563	10PEJ	Drag Click	15178	10H4B	Idle Gear C
5706	10QL4	Roller Clutch Assembly	14564	10JM3	Drag Click Spring	15179	10NGP	Rear Protector
5707	106MU	Bearing Washer	15146	102BL	Drag Knob	15180	10AT4	Worm Shaft Retainer
5724	10JUJ	Oscillating Slider Bushing	15148	10J0V	Spool Assembly	15181	106M3	Worm Bushing (Rear)
5909	10PFJ	Line Roller Bushing	15149	1041J	Line Safety Guard	15183	10357	Oscillating Guide A
5947	103NH	Screw	15150	105RZ	E Lock	15184	104M7	Oscillating Guide B
6332	107WW	Line Roller Washer	15151	10L4R	Main Shaft	15185	102MG	Body
7175	10JLX	Line Roller	15152	105YW	Bail Spring Guide A	15186	10N3W	Handle Screw Cap
7583	105NC	E Lock	15153	10HDL	Bail Spring Guide A Support	15262	10G8L	Line Roller Support Cover
7859	10MPU	Screw	15154	105LK	Bail Spring	15263	10Q3A	Line Roller Support
7875	109LW	Oil Cap	15155	107A8	Bail Spring Guide B	17656	10DMP	Oscillating Pawl
8374	107FL	Ball Bearing	15156	107Y6	Bail Arm	17658	10DMR	Worm Shaft
9191	10ML9	Screw	15157	1087P	Bail Spring Cover	19320	10S81	Idle Gear B Small
9444	10MT0	Screw	15158	10PM1	Rotor	19765	100EY	Idle Gear B
10080	10N28	Key Washer	15159	10MK2	Bail Hold Support Guard			
10081	1031E	Drag Washer	15160	106YX	Bail Assembly	15187	10NML	Spare Spool Assembly

Please note that the number of adjusting washers may not be the same as shown in the exploded views.  
(Adjustment will vary with each individual product.)

(241030)\_004