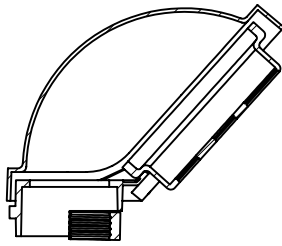
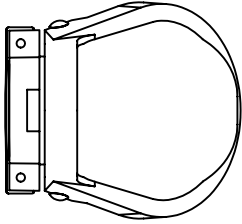
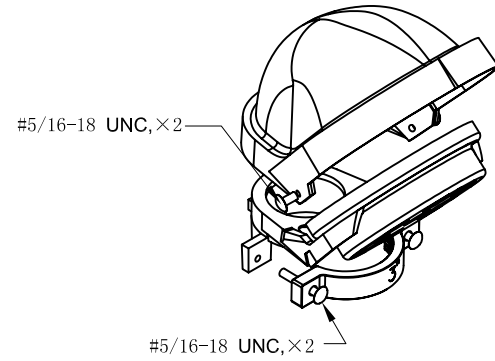
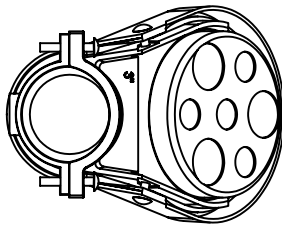
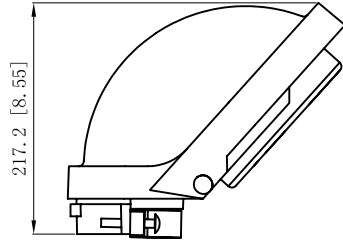
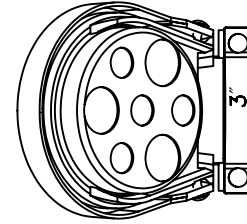
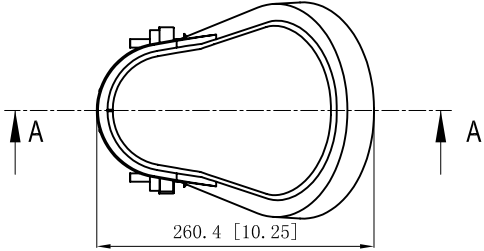


SIDES	BOTTOM
2 PCS 5/16-18×5/8 Screws Installed	
2 PCS 5/16-18×2 Screws Installed	
Material:Aluminum-A380 Shot Blasting	



CUTAWAY VIEW A-A



This data sheet is for reference only .GARVIN INDUSTRIES reserves the right to make changes to the design without prior notice.

DESCRIPTION
TRADE REFERENCE TERMS

STANDARD PACKING
3 PCS

GARVIN INDUSTRIES			
TITLE SERVICE ENTRANCE CAPS			
SIZE A4	DWG NO.	SEC300	REV A
DATA SHEET			