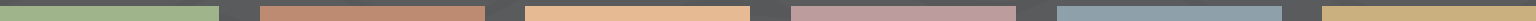




# HOME STYLE GUIDE





## Style + Performance + Service = The Fypon Advantage

Fypon gives design and construction professionals an edge over other interior and exterior design building materials. Fypon marries style and performance with one of the industry's largest product offerings and best customer service to give our customers a true competitive edge.

### STYLE

Fypon is the recognized leader in polyurethane product design, innovation and molding technology. From old world style to classic modern design, Fypon offers the largest and most architecturally correct styles and designs of moulding and trim, shutters and beams.

- Architecturally correct and historically accurate product styles and designs
- Molded from actual timber and stone products to capture the texture, patterns and deep shadow lines of classic building materials
- A distinctive look and personality to complement any home design for maximum appeal

### PERFORMANCE

Only Fypon engineers consistent quality and long lasting performance into every product we make, today and tomorrow. From our popular trim and mouldings to our growing shutter and beam offerings, each product is manufactured by experts in polyurethane molding technology. All Fypon building products:

- Are easy to install with no special tools or extra labor necessary
- Deliver consistent workmanship and product quality
- Feature low maintenance
- Provide weather and moisture resistance
- Come stain or paint ready
- Resists insects and won't warp, crack or split

### SERVICE

From one leader to another, building professionals trust Fypon to deliver on the jobsite and to the bottom line.

- Fypon provides architects and builders with renderings and marketing support for blue prints and model homes
- Receive extensive builder support including an industry first quote package program with quantity pricing available at [CPS@fypon.com](mailto:CPS@fypon.com)
- We provide installation FAQ (frequently asked questions) and support from experts in polyurethane
- Plus custom design services for historical restorations, replicas or any unique profile that fits your home or commercial application available at [CPS@fypon.com](mailto:CPS@fypon.com)





# FEATURES & BENEFITS



Lasting performance and minimal upkeep compared to other materials.\*



Our closed-cell polyurethane is resistant to insects.



Lightweight and does not require special tools.\*



Ideal for moisture-prone interior spaces like bathrooms, kitchens and basements.



Polyurethane smooth or woodgrain — comes pre-primed and ready to paint or stain.\*



Beautiful and durable in all seasons, withstands the elements better than traditional materials.

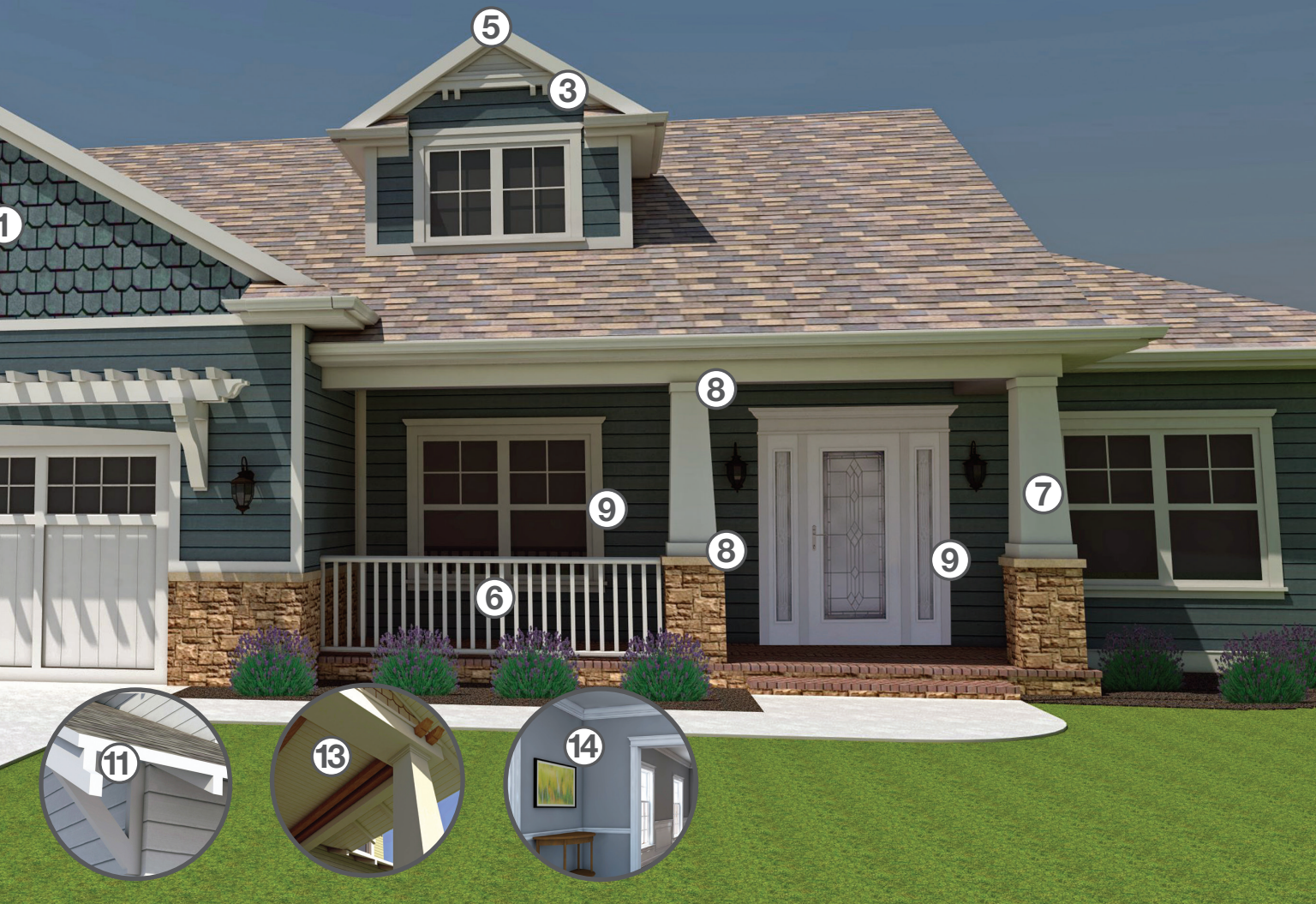
\* See [www.fypon.com](http://www.fypon.com) for instructions on proper maintenance, installation, and painting or staining.

# BUILDING BLOCKS OF **STYLE**

- 1 SHUTTERS**  
Lightweight louvered, paneled, board & batten, or plank, decorative frames that equal the window length located on the sides of a window.
- 2 TILE VENT**  
A decorative piece mounted near the ridge of the roof- seen most on Mediterranean/Spanish style homes.
- 3 CORBEL**  
An architectural member projecting from the face of a wall.
- 4 BRACKET**  
A decorative unit, in which two sides form a right angle with one arm flush against a wall and the other flush beneath the projecting surface.
- 5 GABLE VENT/LOUVER**  
A building component installed into the side wall to allow ventilation and/or decoration on a building. A non-ventilation louver that is to be used as a decorative building accent is known as a decorative louver.
- 6 PORCH/RAILING SYSTEM**  
A structure made of spindles that supports and forms a barrier or guard.
- 7 COLUMN**  
Supporting or decorative pillar used in building.
- 8 CAP & BASE**  
Upper & lower member of an entrance, wainscot, column or pilaster.
- 9 WINDOW & DOOR TRIM**  
The finish materials on a building, applied around the window and door openings.
- 10 DENTIL BLOCK**  
Smaller rectangle block which can be spaced closely together in a series or in sequence with moulding.
- 11 RAFTER TAIL**  
Any one of a set of sloping beams that form the framework of a roof.
- 12 TRELLIS**  
They can be attached to a house on one side or they can be free standing. They provide plenty of shade through a dappled pattern of beams and rafters. The edges of the roof pieces are given a fancy cut to add flare to the design.
- 13 BEAMS**  
Exposed on the ceiling as part of the room design. Fypon beams are for decorative purposes and can be designed according to the stylistic preferences of the homeowner.
- 14 CROWN MOULDING**  
A moulding used wherever an interior angle is to be covered, especially at the roof and wall corner.









# DESIGN DNA

Good genes.

It works for homes, too. A house's design DNA — made up of many elements, such as transoms, symmetry, porches or pillars to name a few — is steadfast and unmistakable. And those unchangeable characteristics comprise a story being retold for generations.

Every home style speaks about its roots, such as how a movement helped craftsmanship and attention to detail survive the dawn of the manufacturing era. So whether the style is Craftsman — or Victorian, or Colonial, or so many others — there is history behind every home style. These building blocks of style take shape as columns, cornices or fishscale paneling, and so many other components, inspire us to let history repeat itself.

This style guide offers helpful explanations about the time-tested elements that work together to create a variety of today's popular home styles, along with pictures of both historic and modern takes on the design.

Whichever home style resonates with you, you'll find that Fypon shares your passion for authenticity. We research our products to ensure they are historically accurate. And beyond their beauty, Fypon products are proven to be long lasting, high performing and low maintenance.

This style guide will help you find the right design essentials for telling the story of your home. Be it functional, decorative — or both — each Fypon product helps you achieve a look that will stay on-trend and increase perceived value of a home or project well into the future.



# ARCHITECTURAL ORIGINS



## A LOOK AT POPULAR HOME STYLES

From events throughout history to outright necessity, the inspiration for today's home designs is rich and varied. We researched the origins of each of our pieces to ensure they are architecturally correct, so you can design a home that stands out and stays true to a homeowner's style.

---

COLONIAL • VICTORIAN • NEW CLASSICAL • CAPE COD  
FARMHOUSE • CRAFTSMAN • ITALIAN • SOUTHWEST • RANCH

---





# COLONIAL



One of the most classic, unpretentious house styles is the Colonial. Stately and distinguished, rather than cute or cottage like, the Colonial's genetic code of traditional traits is easily recognizable. Most of these homes are symmetrical, where each side is a mirror image of the other. Decorative elements are restrained and drawn from Greek and Roman classical architecture. The entry is generally very obvious with a large door, transom, sidelights, hood, or even a portico.

Other design fundamentals may include classical columns, two-story pilasters, quoins at corners, dentil trim under eaves, or Palladian windows. The entrance is centered and accented with columns, pilasters, pediment, and may be hooded to create a covered porch. Symmetrical windows may have crossheads and wide trim and/or shutters.



# KEY ELEMENTS

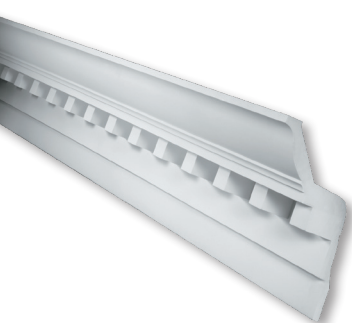
- Shutters
- Crossheads
- Keystones
- Pilasters
- Columns
- Balustrade System
- Cornice
- Dentil Moulding
- Pediment



Historical



Today



# VICTORIAN



As the Victorian era came into popularity in the United States during the last half of the 1800s, out went the symmetrical look that had, until then, dominated Classic architecture. Advancements in home construction, along with the excess of the time period, resulted in increasingly complex home designs with ornate details. Over hundreds of years, those inherited physical features have become the characteristics that make the Victorian style so easily recognizable. Victorian homes are typically two or three stories, and are designed with multiple textures, decorative trim, wrap-around, one-story porches and vibrant colors. You may find decorative porch spandrels, gable pediments, fishscale, ornate brackets and spires on the turrets.



# KEY ELEMENTS

- Decorative Trim
- Decorative Brackets
- Decorative Corbels
- Victorian Gable Pediment
- Porch
- Porch Spandrels
- Fishscale Paneling
- Decorative Knee Braces
- Door Surround
- Finials
- Spires



Historical



Today





# NEW CLASSICAL



Not quite Colonial, Neoclassical Revival style owns distinct chromosomes that create a specific set of design mannerisms. The look of this house style is defined by a commanding facade with a full-height porch supported by classical columns. The columns are often fluted and the capitals are usually ornate. The front of the home is symmetrical, with a centered entry flanked by a balanced array of windows. Decorative surrounds are common on doorways, including pediments or crossheads with plain or fluted pilasters.

# KEY ELEMENTS

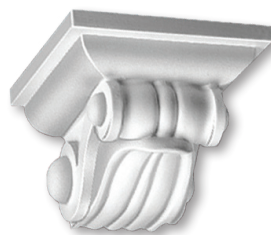
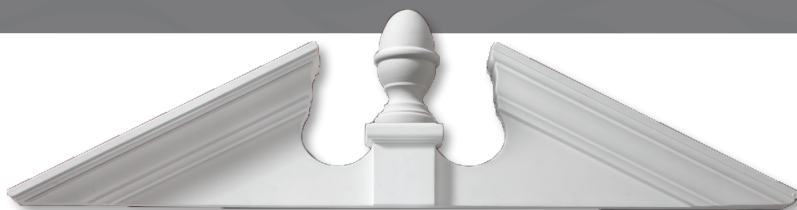
- Porch
- Columns
- Door Surround
- Shutters
- Dentil Moulding
- Gable Pediments
- Corbels
- Brackets
- Cornice



Historical



Today





# CAPE COD



The Cape Cod home style was born to keep out the wind, cold and snow of New England winters. Those attributes remain apparent today, regardless of where a Cape Cod home is constructed. Steep rooflines with dormers are the most well-known details of the Cape Cod style. Design elements are symmetrical, and include windows with wide white trim and shutters, a centered front door with pilasters and a large, central chimney.



# KEY ELEMENTS

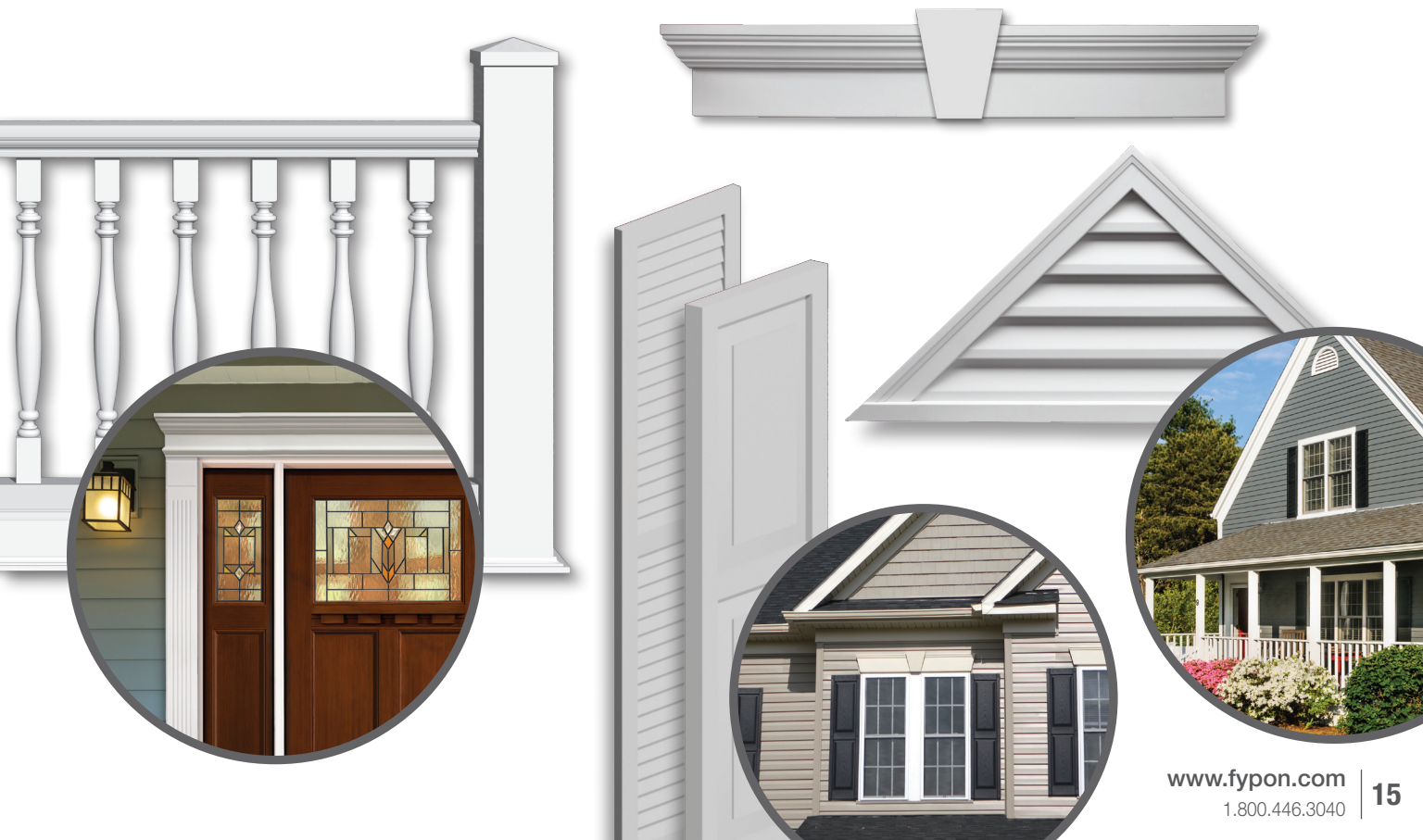
- Crossheads
- Louvered Shutters
- Raised Panel Shutters
- Pilasters
- Flat Trim
- Louvers
- Wrap-Around Porch



Historical



Today



# FARMHOUSE



A heritage of relying on the land is immediately evident in the rugged beauty of Farmhouse style. The first farmers to build houses in America's heartland didn't have time for adding extravagant details to their homes. The architecture was boxy and rugged, constructed using the timber and stones that were cleared from the farmers' fields. Multi-paned windows provided views of the surrounding acreage. In good times, wrap-around porches were often added, but with simple — and simply beautiful — columns and railings.



# KEY ELEMENTS

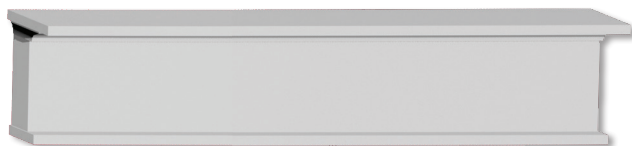
- Crossheads
- Louvered Shutters
- Pilasters
- Flat Trim
- Louvers
- Wrap-Around Porch



Historical



Today



# CRAFTSMAN



The respected roots of the now-familiar Craftsman style have appealed to generations of homeowners. Embracing simplicity, handiwork, and natural materials. Craftsman home plans are cozy, often with shingle siding and stone details. Open porches with overhanging beams and rafters are common to Craftsman homes, as are projecting eaves and a low-pitched gable roof. Often visible, especially around the corners of the home are corbels, rafter tails, simple gables at the eaves, and tapered columns.



# KEY ELEMENTS

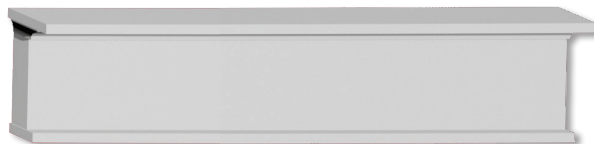
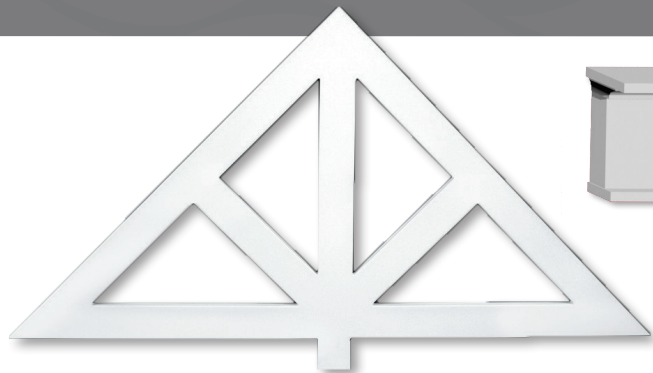
- Tapered Columns
- Craftsman Crosshead
- Porch Post
- Flat Trim
- Brackets & Corbels
- Gable Pediment
- Door Surround
- Timber Shutters
- Rafter Tails
- Beams
- Timber Trellis



Historical



Today



# ITALIAN



With an ancestry of admiration for all things beautiful, the essence of Italian style remains unchanged today. These homes are known for having low-pitched, tile-covered roofs and stucco walls. The arched entrances often feature decorative accents around the door, such as pilasters, spiral columns, tile or stone. The interior layout and decor are inspired by the idea that a Mediterranean home is designed around lush gardens, courtyards, and ornate fountains. Interiors often feature arched doorways, high ceilings with exposed beams, and open floor plans.



# KEY ELEMENTS

- Corbels & Brackets
- Rafter Tails & Beams
- Arched Windows
- Arched Doors
- Stone Door Surround
- Arched Stone Blocks
- Balustrade System
- Timber Shutters
- Stone Columns
- Timber Trellis
- Tile Vents



Historical



Today



# SOUTHWEST

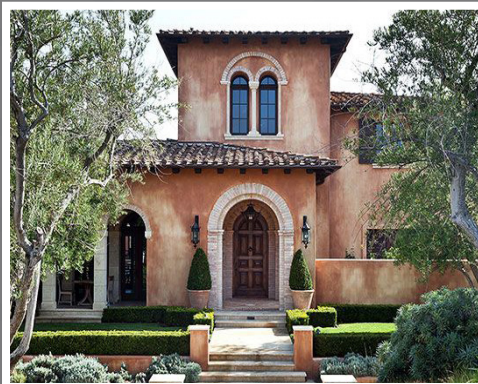


The building blocks of Southwestern style share family ties with the desert landscape and arid climate that inspired them. Set low to the ground with flat or low-pitched tile roofs, one and two story Southwestern homes beckon visitors inside with arched entryways. The splash of courtyard fountains can be heard from behind rustic wrought iron gates and ornate front doors with wrought iron glass. Traditional masonry construction covered in stucco was used to help keep the interior cool. Decorative detailing may include patterned tile work, exposed timbers, and stone floors, giving Southwestern homes a distinct south-of-the-border flavor with an inviting ambiance.



# KEY ELEMENTS

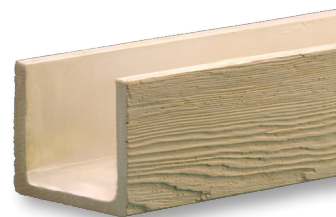
- Corbels & Brackets
- Rafter Tails & Beams
- Arched Windows
- Arched Doors
- Stone Door Surround
- Arched Stone Blocks
- Balustrade System
- Timber Shutters
- Columns
- Timber Trellis
- Tile Vents



Historical



Today



# RANCH



With an easy-going temperament and sense of pride in its genes, ranch style homes are known for both practicality and flexibility. The ranch home's low profile comes from its roots in the Western United States, where working ranch homes were one-level, practical and unadorned. Early ranch homes were basic and informal. But the design went through a stylish evolution in the early 1960s, when more and more ranch homes were built with increasingly dramatic features, like varying roof lines, cathedral ceilings, sunken living rooms, and extensive landscaping and grounds.



# KEY ELEMENTS

- Shutters
- Crossheads
- Louvers
- Door Surround
- Flat Trim
- Balustrade System
- Brackets
- Corbels
- Porch Posts



Historical



Today



MIX & MATCH

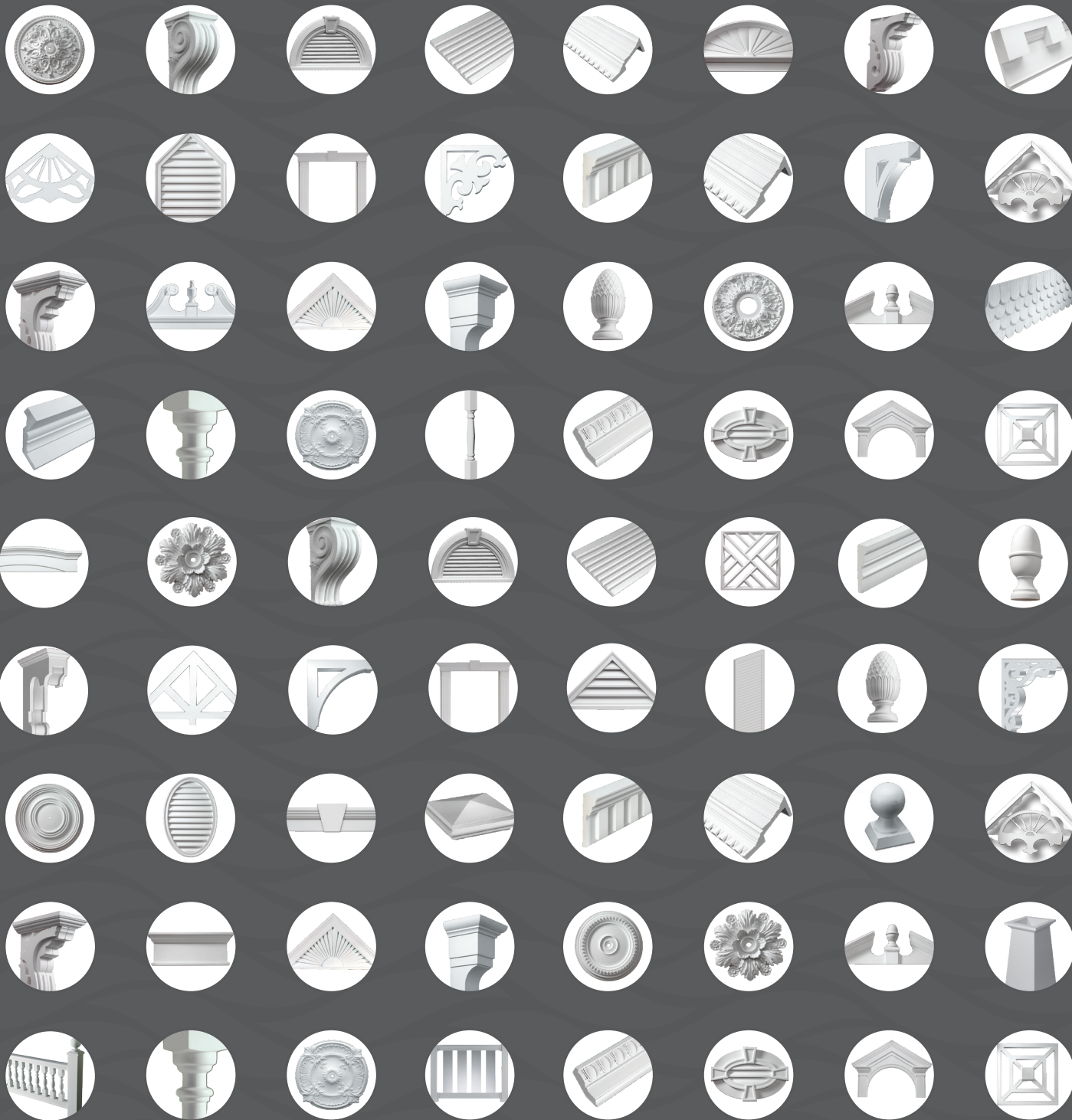
TO CREATE

YOUR OWN

UNIQUE **STYLE**









THE  
POSSIBILITIES  
ARE  
ENDLESS  
WITH 

# LET US DO THE WORK FOR YOU

The background of the entire page is a detailed architectural line drawing of a two-story house facade. The drawing includes various millwork details such as shutters, frieze bands, and decorative elements. Annotations like '4' FRIEZE BAND (TYP.)', '16'X48' DECORATIVE SHUTTERS', and 'STEPS' are visible. The drawing is rendered in a technical, blueprint-like style with fine lines and some color-coded markers like a pink arrow and an orange circle.

Teaming up with Fypon is the smartest partnership around. We deliver expertly designed, authentic looking millwork that is built using high-quality, durable polyurethane. And we are delivering additional value to the industry by offering builders a complete — and absolutely free — takeoff service.

The building pros at Fypon know the details and decisions that go into every project, so we offer a comprehensive takeoff service that helps builders match their needs with the high-quality products in our comprehensive millwork portfolio.

This complementary service delivers everything you need to get your project started, including pricing and drawings with Fypon parts in context. A Fypon builder services representative will also be available to assist you every step of the way.

Our takeoff service helps make it easy to use Fypon products to add beauty to your home projects, without takeoff hassles, and ultimately fewer callbacks.

In addition to our takeoff service, Fypon also provides custom capabilities which allow builders to create truly unique designs required for projects to match a specific home style or project.



# BEFORE



# AFTER



## 1

### Send

Email your elevations to  
[projects@fypon.com](mailto:projects@fypon.com)

## 2

### Create

Our builder services experts  
use your elevations to design  
a customized takeoff plan

## 3

### Deliver

We present a free, highly  
detailed takeoff plan  
with a quote

## 4

### Order

Simply take the plan to  
your local dealer to  
order product



*For complete homeowner lifetime limited warranty details, exclusions and limitations, please see your purchase location or visit [www.fypon.com](http://www.fypon.com).*

1750 Indian Wood Circle | Maumee, OH 43537 | Phone: 800.446.3040 U.S. and Canada  
Fax: 800.446.9373 U.S. and Canada | [www.fypon.com](http://www.fypon.com) | [info@fypon.com](mailto:info@fypon.com)

©2017 Fypon, LLC. All rights reserved. Fypon and the Fypon Logo are trademarks of Fypon, LLC. Fypon, LLC, and its parent company Therma-Tru Corp. are part of Fortune Brands Home & Security, Inc. All trademarks are property of their respective owners.