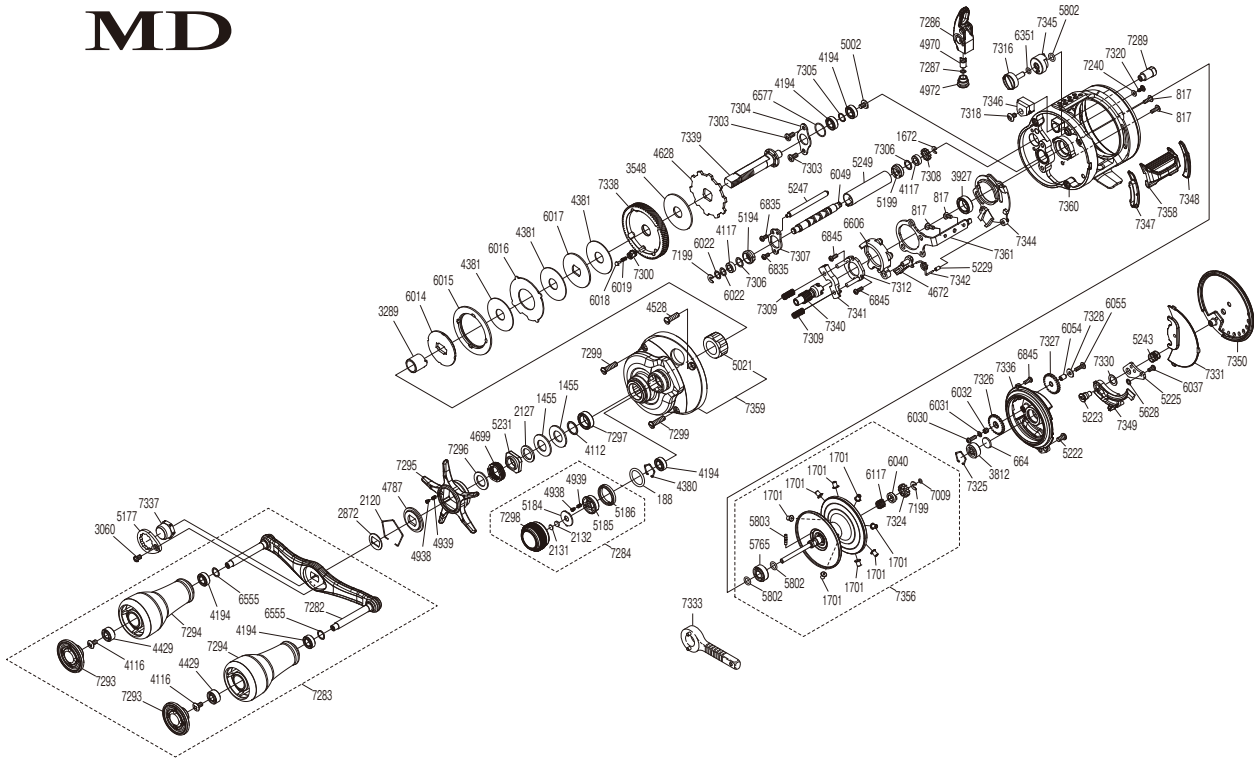


SHIMANO

CALCUTTA CONQUEST MD

23CQMD401XLH



(51RL646D41X)

| # | Part No. | Description | # | Part No. | Description | # | Part No. | Description |
|------|----------|---------------------------|------|----------|---------------------------------|------|----------|------------------------|
| 188 | 109EB | O Ring | 5231 | 10A3W | Star Drag Nut | 7298 | 13YKC | Cast Control Cap |
| 664 | 1057S | Spacer B | 5243 | 10KNB | Damper Spring | 7299 | 13MBW | Screw |
| 817 | 10MPW | Screw | 5247 | 10GUH | Level Wind Guide | 7300 | 13VG9 | Drag Click Pin Holder |
| 1455 | 1052E | Drag Spring Washer (H) | 5249 | 10NFV | Level Wind Guard | 7303 | 1055F | Screw |
| 1672 | 105NC | E Lock | 5628 | 10280 | Washer | 7304 | 13VAE | Drive Shaft Retainer |
| 1701 | 10CPE | Brake Collar (Gray) | 5765 | 105CA | Ball Bearing | 7305 | 13Y0Z | Washer |
| 2120 | 10KXV | Click Plate Retainer | 5802 | 10TNF | O Ring | 7306 | 10G8F | Washer |
| 2127 | 10J1N | Star Drag Spacer | 5803 | 10MD0 | Spool Clutch Pin | 7307 | 13SCJ | Worm Bushing Retainer |
| 2131 | 10897 | Cast Control Spacer | 6014 | 10D54 | Pressure Plate | 7308 | 13S6P | Idle Gear C |
| 2132 | 1085G | Cast Control Spacer | 6015 | 10JAZ | Drag Click Ratchet | 7309 | 13T1T | Yoke Spring |
| 2872 | 107QQ | Drive Shaft Shield | 6016 | 10KQL | Eared Washer | 7312 | 13UEP | Clutch Cam Retainer |
| 3060 | 10CZ5 | Screw | 6017 | 10LB6 | Drag Washer | 7316 | 13YKF | Br Dial |
| 3289 | 10BN7 | Roller Clutch Inner Tube | 6018 | 10C0S | Drag Click | 7318 | 103L4 | Screw |
| 3548 | 10CHZ | Drag Washer | 6019 | 10J89 | Click Spring | 7320 | 13JWQ | Screw |
| 3812 | 105C1 | Ball Bearing | 6022 | 10J16 | Washer | 7324 | 13SW5 | Idle Gear A |
| 3927 | 10EX8 | Ball Bearing | 6030 | 10LVM | Screw | 7325 | 10GEW | Bearing Retainer |
| 4112 | 10J4J | Washer | 6031 | 10HVD | Washer | 7326 | 13RUX | Idle Gear B |
| 4116 | 103E9 | Screw | 6032 | 10ECQ | Idle Gear B Support | 7327 | 13S6N | Idle Gear D |
| 4117 | 10PXY | Bushing | 6037 | 10U0S | Screw | 7328 | 13PKJ | Washer |
| 4194 | 105BP | Ball Bearing | 6040 | 10MCY | Spool Shaft Cam | 7330 | 13YKJ | Washer |
| 4380 | 1057X | Retainer | 6049 | 101TD | Worm Shaft | 7331 | 13YKK | B Side Plate Seal |
| 4381 | 10CHW | Drag Washer | 6054 | 10TUH | Idle Gear D Support | 7336 | 13YKP | Dial Case Assembly |
| 4429 | 10KX2 | Ball Bearing | 6055 | 10TTU | Screw | 7337 | 13V1Q | Handle Nut |
| 4528 | 10A6X | Screw | 6117 | 10E20 | Spool Shaft Spring | 7338 | 13UYC | Drive Gear |
| 4628 | 10D6Y | Anti-Reverse Ratchet | 6351 | 10CFZ | O Ring | 7339 | 13YKQ | Drive Shaft |
| 4672 | 105ZV | Clutch Pawl | 6555 | 104FH | Washer | 7340 | 13SQ8 | Pinion Gear |
| 4699 | 10A71 | Star Drag Spring | 6577 | 10SZ4 | O Ring | 7341 | 13T1U | Yoke |
| 4787 | 10J1Y | Star Drag Click Plate | 6606 | 10SKS | Clutch Cam | 7342 | 13YKR | Clutch Pawl Spring |
| 4938 | 10B27 | Click Pin | 6835 | 10LVF | Screw | 7344 | 13UER | Clutch Guard |
| 4939 | 10988 | Click Spring | 6845 | 101CN | Screw | 7345 | 13YKS | Brake Cam |
| 4970 | 10FFT | Line Guide Pawl | 7009 | 10E7H | O Ring | 7346 | 13YKT | Brake Holder |
| 4972 | 10FJC | Pawl Cap | 7199 | 105NK | E Lock | 7347 | 13TDS | Clutch Bar Guide B |
| 5002 | 10PVU | Screw | 7240 | 13Y8G | Washer | 7348 | 13TDR | Clutch Bar Guide A |
| 5021 | 10F33 | Roller Clutch Bearing | 7282 | 13YK2 | Handle Shank Assembly | 7349 | 13RNT | B Side Plate Cam Lever |
| 5177 | 10Q66 | Handle Nut Plate | 7283 | 13YK3 | Handle Assembly | 7350 | 13YKU | B Side Plate |
| 5184 | 10L2E | Cast Control Click Plate | 7284 | 13YK4 | Cast Control Cap Assembly | 7356 | 13YLO | Spool Assembly |
| 5185 | 10BSX | Click Pin Holder | 7286 | 13GH8 | Line Guide Pawl Holder Assembly | 7358 | 13YL2 | Clutch Button Assembly |
| 5186 | 10L70 | Cast Control Click Holder | 7287 | 13GUU | Washer | 7359 | 13YL3 | A Side Plate Assembly |
| 5194 | 10N9Q | Worm Bushing A | 7289 | 13YK7 | Magnet Holder Assembly | 7360 | 13YL4 | Frame Assembly |
| 5199 | 104SP | Worm Bushing B | 7293 | 13YKA | Handle Knob Seal | 7361 | 13YL5 | Clutch Plate |
| 5222 | 10LSL | Screw | 7294 | 13YKB | Handle Knob | | | |
| 5223 | 10GM6 | B Side Plate Insert | 7295 | 13V35 | Star Drag | | | |
| 5225 | 10AYX | Damper Bush | 7296 | 10QXM | Washer | | | |
| 5229 | 108S5 | Clutch Pawl Spring Collar | 7297 | 105BS | Ball Bearing | 7333 | 10NC0 | Wrench (Accessory) |

Please note that the number of adjusting washers may not be the same as shown in the exploded views.
(Adjustment will vary with each individual product.)

(240620)_004