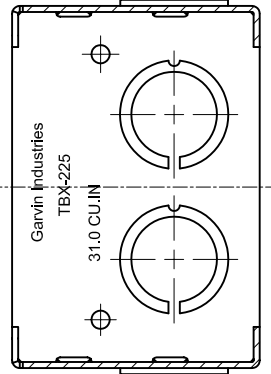
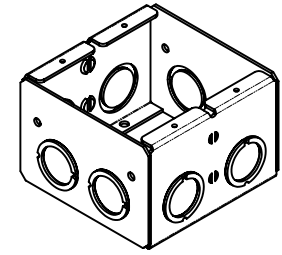
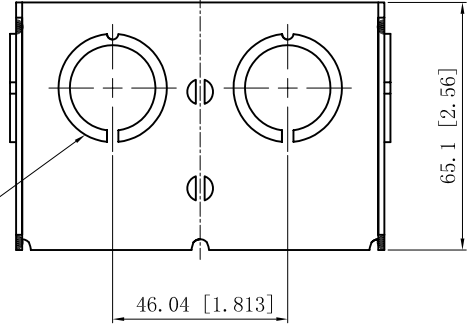


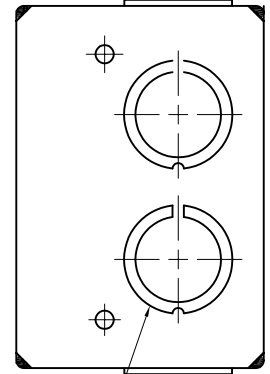
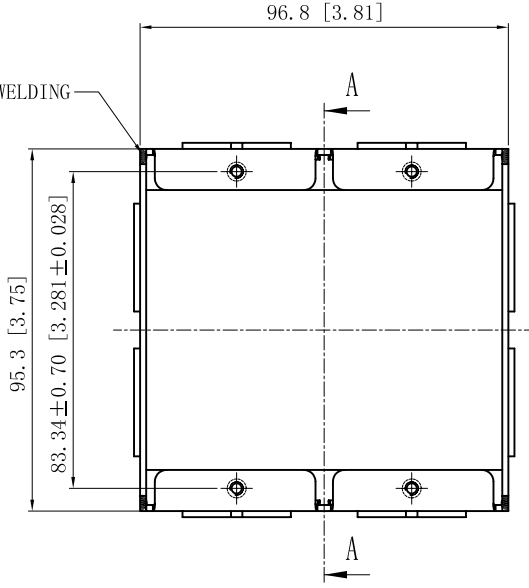
SIDES	BOTTOM
8 1/2"-3/4" MOON KNOCKOUTS	
Material: Steel-0.0625"-G60 Galvanized	

4 1/2-3/4 KNOCKOUTS $\phi=22.5$ [$\phi=0.89$]
 $\phi=28.5$ [$\phi=1.12$] MIRROR



CUTAWAY VIEW A-A

8 PLACES SPOT WELDING



4 1/2-3/4 KNOCKOUTS $\phi=22.5$ [$\phi=0.89$]
 $\phi=28.5$ [$\phi=1.12$] MIRROR

DESCRIPTION
TRADE REFERENCE TERMS

This data sheet is for reference only .GARVIN INDUSTRIES reserves the right to make changes to the design without prior notice.

STANDARD PACKING	GARVIN INDUSTRIES		
	TITLE SOLID MASONRY BOX 2-1/2" DEEP		
10 PCS	SIZE A4	DWG NO. TBX-225	REV A
	DATA SHEET		